

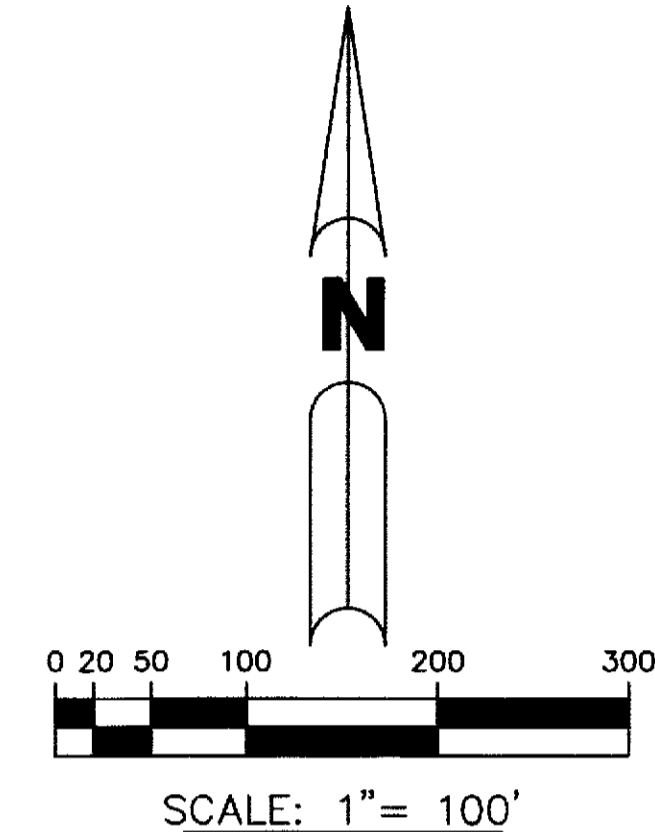
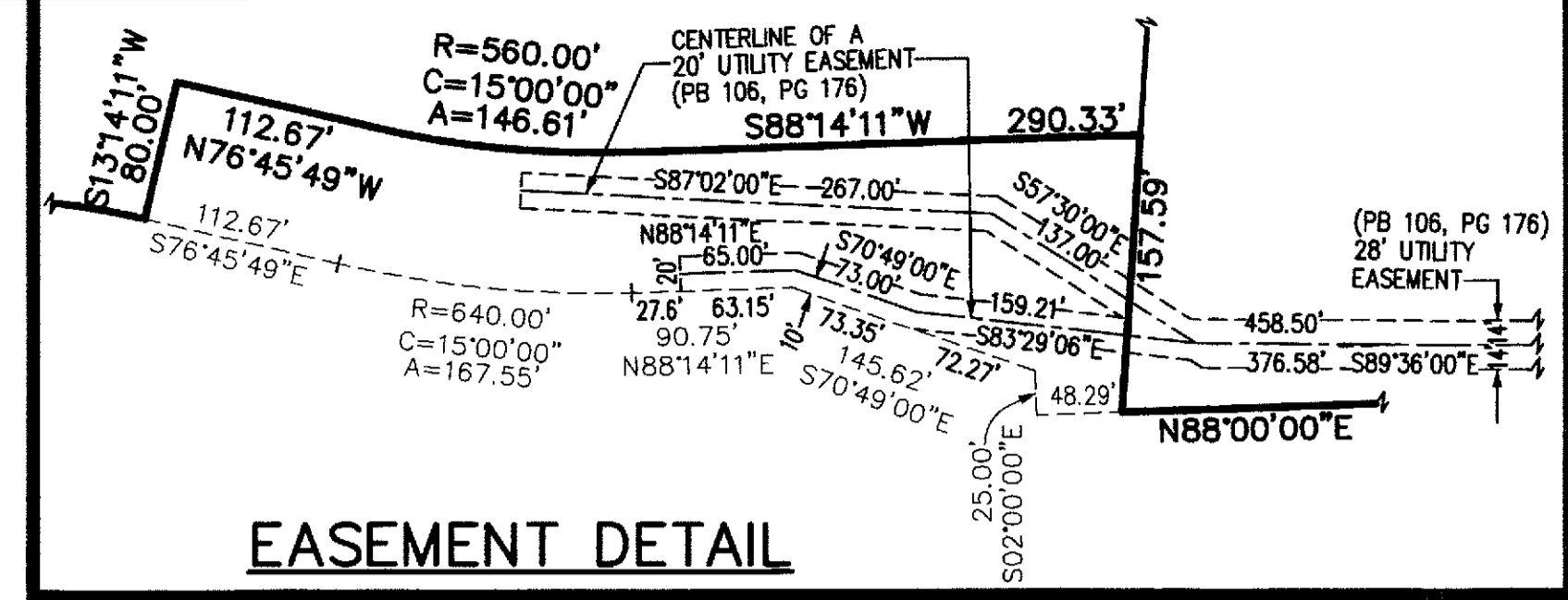
WEST BOYNTON DISTRICT PARK 'B' REPLAT 1 THE SPRINGS P.U.D.

LYING IN SECTION 10, TOWNSHIP 45 SOUTH, RANGE 42 EAST, PALM BEACH COUNTY, FLORIDA,
BEING A REPLAT OF TRACTS A AND S, and WATER MANAGEMENT TRACTS L-2, L-3, and L-4
OF WEST BOYNTON DISTRICT PARK "B" THE SPRINGS P.U.D., RECORDED IN
PLAT BOOK 106, PAGE 176 OF THE PUBLIC RECORDS OF PALM BEACH COUNTY, FLORIDA

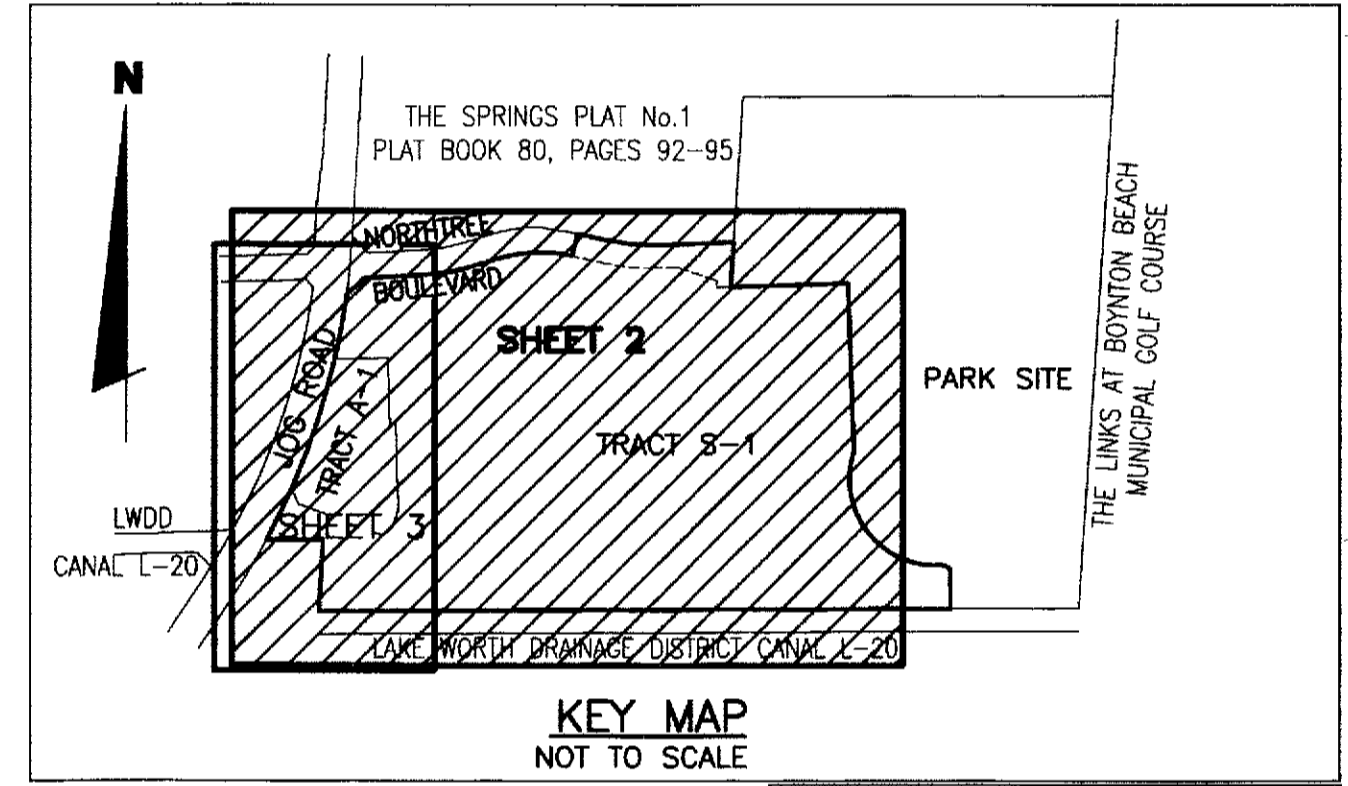
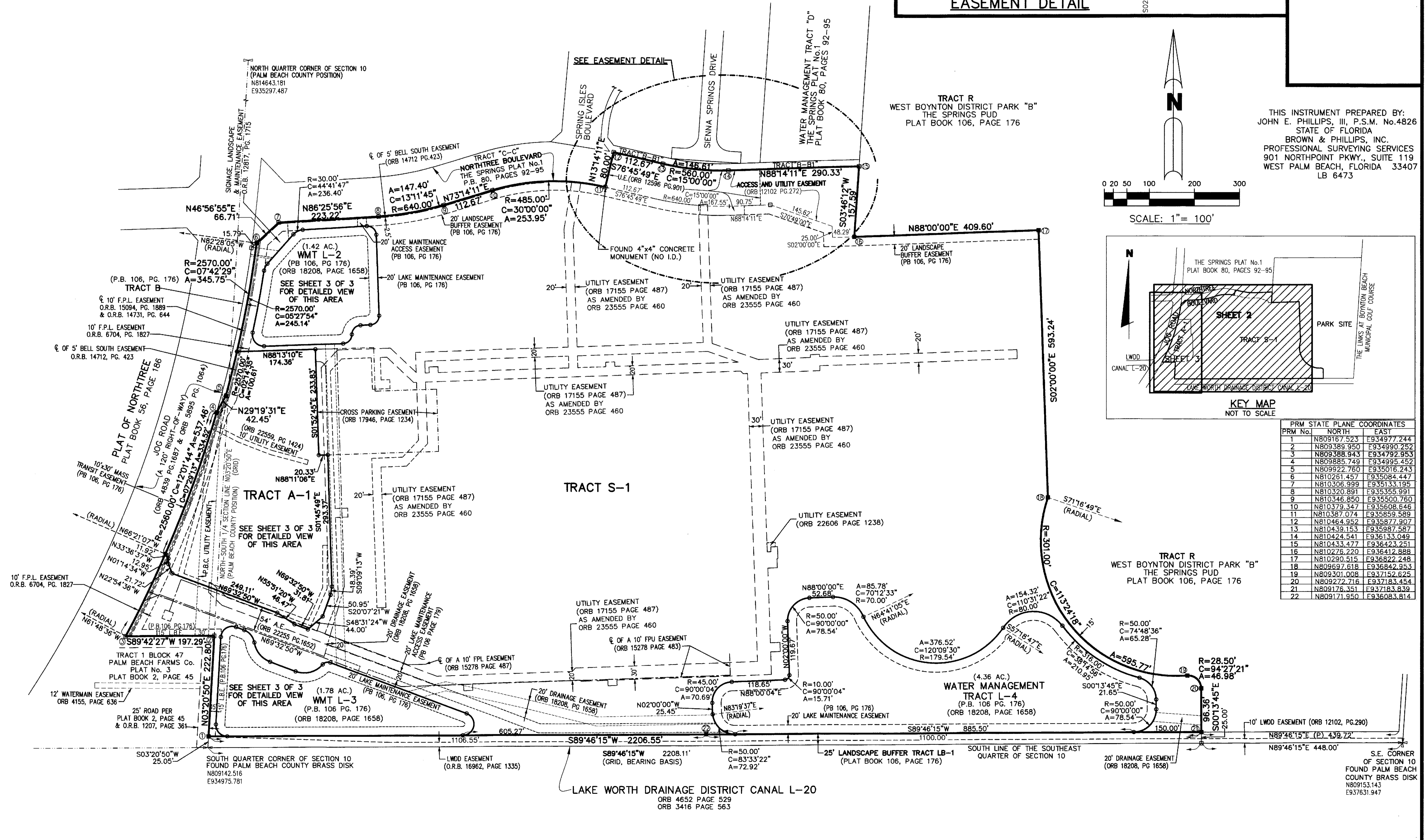
JUNE 2011

SHEET 2 OF 3

0155



THIS INSTRUMENT PREPARED BY:
JOHN E. PHILLIPS, III, P.S.M. No.4826
STATE OF FLORIDA
BROWN & PHILLIPS, INC.
PROFESSIONAL SURVEYING SERVICES
901 NORTHPOINT PKWY., SUITE 119
WEST PALM BEACH, FLORIDA 33407
LB 6473



PRM No.	NORTH	EAST
1	N809167.523	E934977.244
2	N809389.950	E934990.252
3	N809388.943	E934792.953
4	N809885.749	E934995.452
5	N809922.760	E935016.243
6	N810261.457	E935084.447
7	N810306.999	E935133.195
8	N810320.891	E935355.991
9	N810346.850	E935500.760
10	N810379.347	E935608.646
11	N810387.074	E935859.589
12	N810464.952	E935877.907
13	N810439.153	E935987.587
14	N810424.541	E936133.049
15	N810433.477	E936423.251
16	N810276.220	E936412.888
17	N810290.515	E936822.248
18	N809697.618	E936842.953
19	N809301.008	E937152.625
20	N809272.716	E937183.454
21	N809176.351	E937183.839
22	N809171.950	E936083.814

S.E. CORNER OF SECTION 10 FOUND PALM BEACH COUNTY BRASS DISK N809153.143 E937631.947