

STATE OF FLORIDA
 COUNTY OF PALM BEACH
 THIS PLAT WAS FILED FOR
 RECORD AT _____
 THIS _____ DAY OF _____
 2007 AND DULY RECORDED IN
 PLAT BOOK NO. _____, ON
 PAGES _____ AND _____

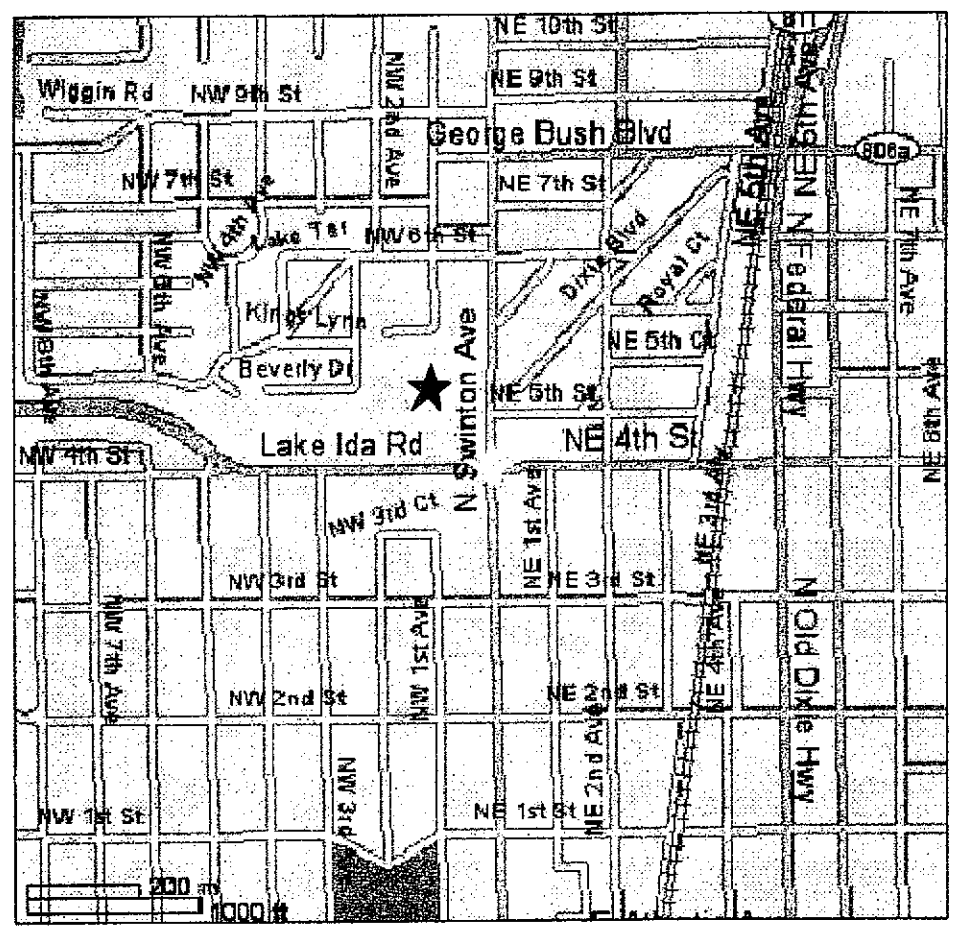
SHARON R. ROCK
 CLERK OF CIRCUIT COURT

BY: _____
 DEPUTY CLERK

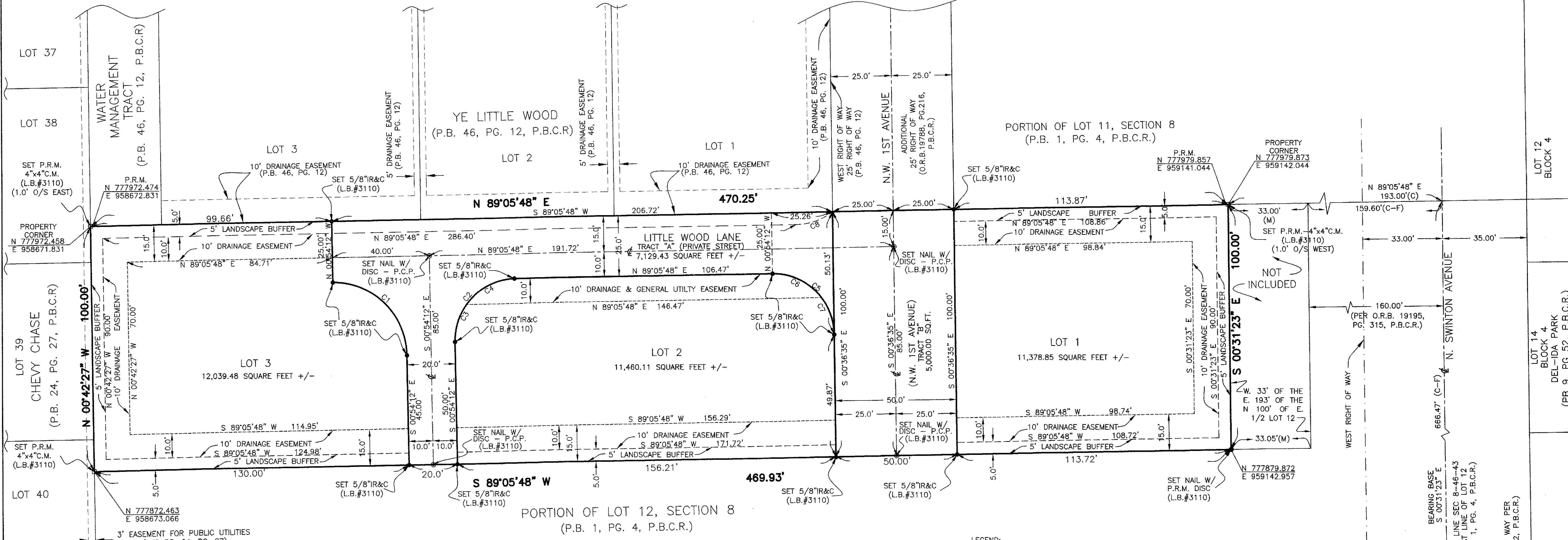
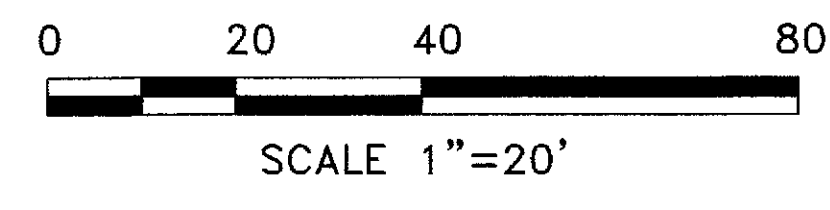
LITTLE WOOD ESTATES

BEING A REPLAT OF A PORTION OF LOT 12, IN SECTION 8,
 TOWNSHIP 46 SOUTH, RANGE 43 EAST, OF THE MAP SHOWING SUBDIVISIONS OF
 PORTIONS OF TOWNSHIPS 45 AND 46 S, RANGE 43 E, PLAT BOOK 1 PAGE 4
 PUBLIC RECORDS OF PALM BEACH COUNTY, FLORIDA.

SECTION 8, TOWNSHIP 46 SOUTH, RANGE 43 EAST,
 CITY OF DELRAY BEACH, PALM BEACH COUNTY, FLORIDA.
 NOVEMBER 2011
 SHEET 2 OF 2



LOCATION MAP
 (N.T.S.)



CURVE TABLE

NUMBER	DELTA ANGLE	RADIUS	ARC LENGTH	CHORD BEARING	CHORD LENGTH
C1	90°00'00"	30.00'	47.12'	N 45°54'12" W	42.43'
C2	90°00'00"	25.00'	39.27'	S 44°05'48" W	35.36'
C3	36°52'12"	25.00'	16.09'	S 17°31'54" W	15.81'
C4	53°07'48"	25.00'	23.18'	S 62°31'54" W	22.36'
C5	90°17'37"	25.00'	39.40'	N 45°45'24" W	35.45'
C6	53°07'48"	25.00'	23.18'	N 64°20'18" W	22.36'
C7	37°09'49"	25.00'	16.22'	N 19°11'29" W	15.93'
C8	36°42'11"	25.00'	16.09'	N 70°39'42" E	15.81'

- LEGEND:
- NORTHING
 - EASTING
 - C CENTER LINE OF ROAD
 - C-F CALCULATED
 - C-M CALCULATED FROM FIELD TIES
 - C.C.R. CONCRETE MONUMENT
 - IR&C C.C.R.
 - L.B. IRON ROD AND CAP
 - N.T.S. LICENSED BUSINESS
 - O/S NOT TO SCALE
 - O.R.B. OFF-SET
 - P.B. OFFICIAL RECORDS BOOK
 - P.B.C.R. PLAT BOOK
 - P.C.P. PALM BEACH COUNTY RECORDS
 - PG. PERMANENT CONTROL POINT
 - P.R.M. PAGE
 - SEC 8-46-43 PERMANENT REFERENCE MONUMENT
 - SECTION-TOWNSHIP-RANGE

NOTICE:

THIS PLAT AS RECORDED IN ITS GRAPHIC FORM, IS THE OFFICIAL DEPICTION OF THE SUBDIVIDED LANDS DESCRIBED HEREIN AND WILL IN NO CIRCUMSTANCES BE SUPPLANTED IN AUTHORITY BY ANY OTHER GRAPHIC OR DIGITAL FORM OF THE PLAT. THERE MAY BE ADDITIONAL RESTRICTIONS THAT ARE NOT RECORDED ON THIS PLAT THAT MAY BE FOUND IN THE PUBLIC RECORDS OF THIS COUNTY.

SURVEYORS STATEMENT
 THIS INSTRUMENT WAS PREPARED BY ROBERT D. KEENER
 FLORIDA LICENSED SURVEYOR AND MAPPER, LICENSE NO. 15-4846
 IN AND FOR THE OFFICE OF:
CRAIG A. SMITH & ASSOCIATES
 CONSULTING ENGINEERS-PLANNERS-SURVEYORS-GRANTS SPECIALISTS
 7777 GLADES ROAD, SUITE 410
 BOCA RATON, FLORIDA 33434
 (561) 791-9280
 CERTIFICATE NO. LB-3110
LITTLE WOOD ESTATES