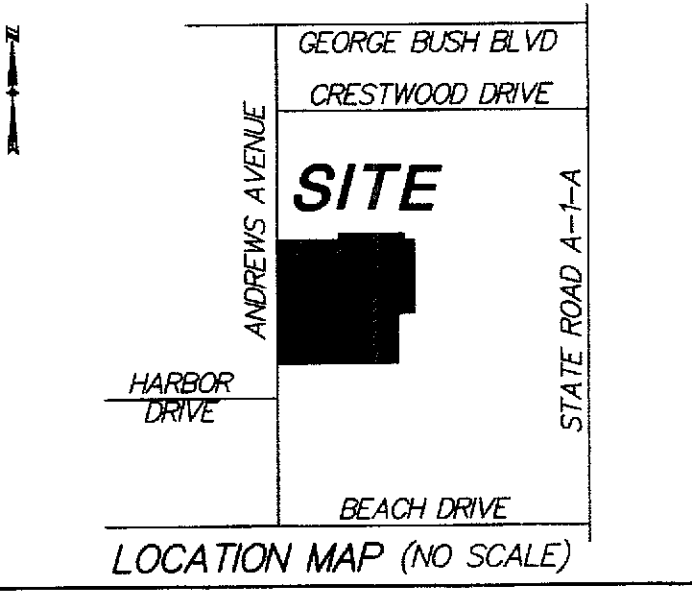


OCEAN APPLE ESTATES PLAT TWO

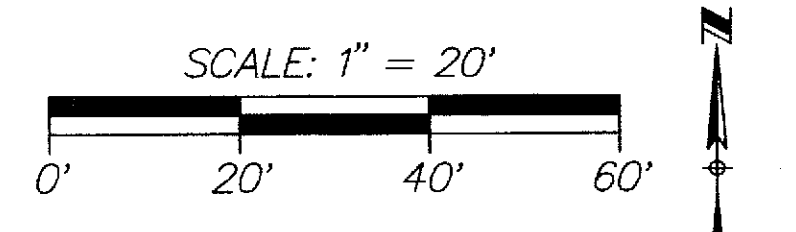
BEING A REPLAT OF LOT 3, OCEAN APPLE ESTATES, PLAT BOOK 65, PAGE 100 (P.B.C.P.R.) AND LOTS "A" AND "B", LANE SUBDIVISION, PLAT BOOK 91, PAGE 183 (P.B.C.P.R.) BEING IN SECTION 9, TOWNSHIP 46 SOUTH, RANGE 43 EAST, CITY OF DELRAY BEACH, PALM BEACH COUNTY, FLORIDA.

AUGUST 2011
SHEET 2 OF 2

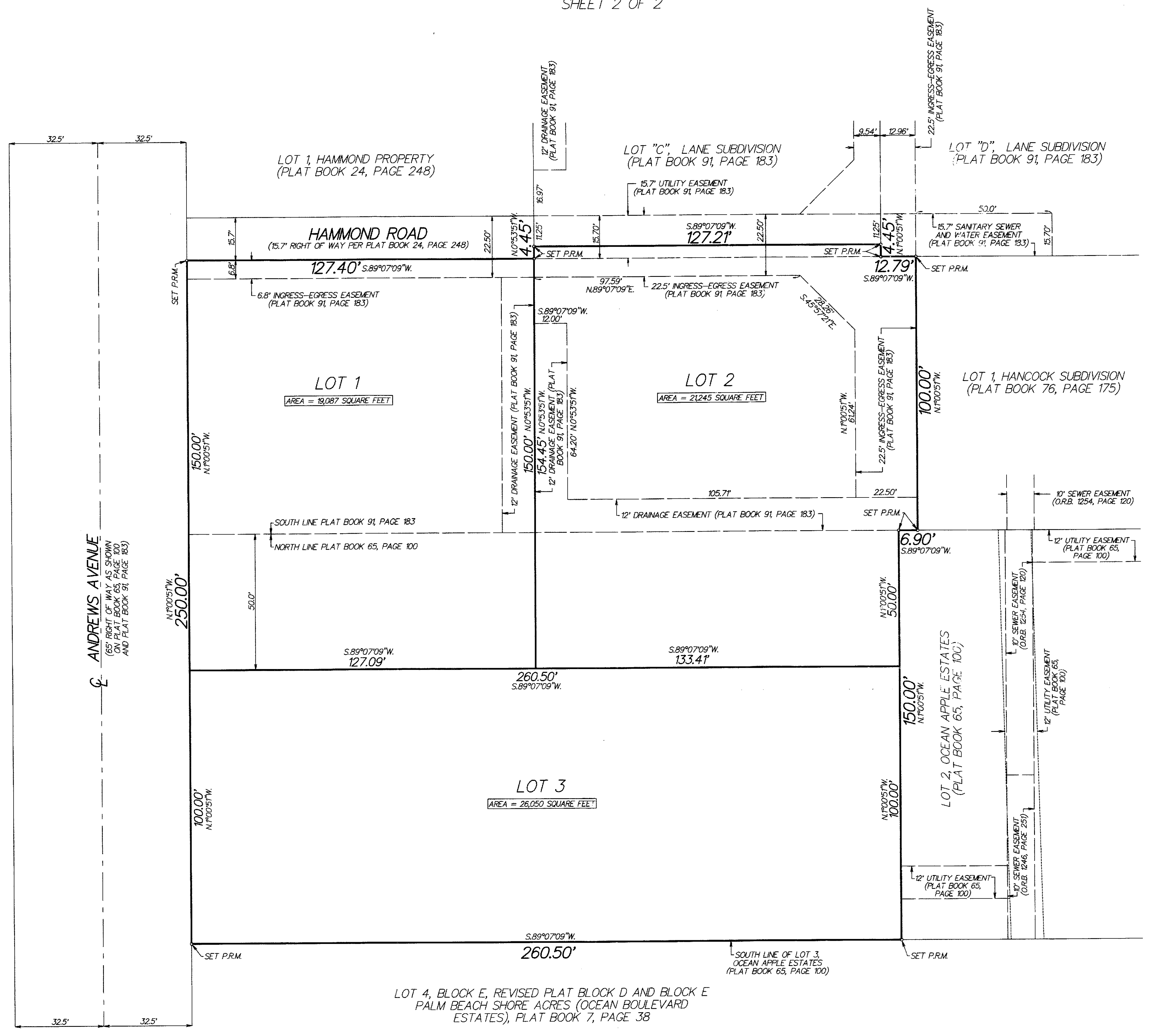


COUNTY OF PALM BEACH
STATE OF FLORIDA
THIS PLAT WAS FILED FOR RECORD AT _____
THIS _____ DAY OF _____
20____ AND DULY RECORDED IN PLAT BOOK NO. _____
ON PAGE _____
SHARON R. BOOK, CLERK AND COMPTROLLER
BY _____ DC

THIS INSTRUMENT WAS PREPARED BY PAUL D. ENGLE, IN THE OFFICE OF O'BRIEN, SUITER & O'BRIEN, INC., 955 N.W. 17TH AVENUE, SUITE K1, DELRAY BEACH, FLORIDA 33445 (561) 276-4501



LEGEND:
CL = CENTERLINE
CONC = CONCRETE
O.R.B. OFFICIAL RECORDS BOOK
P.R.M. = PERMANENT REFERENCE MONUMENT (4"X4" CONCRETE MONUMENT STAMPED "P.R.M. LB353") UNLESS STATED OTHERWISE
G.U.E. = GENERAL UTILITY EASEMENT
P.B.C.P.R. = PALM BEACH COUNTY PUBLIC RECORDS



LOT 4, BLOCK E, REVISED PLAT BLOCK D AND BLOCK E PALM BEACH SHORE ACRES (OCEAN BOULEVARD ESTATES), PLAT BOOK 7, PAGE 38