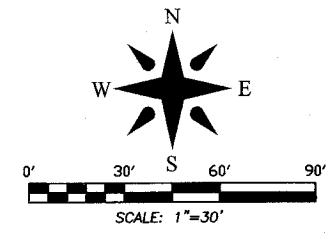


5824-000

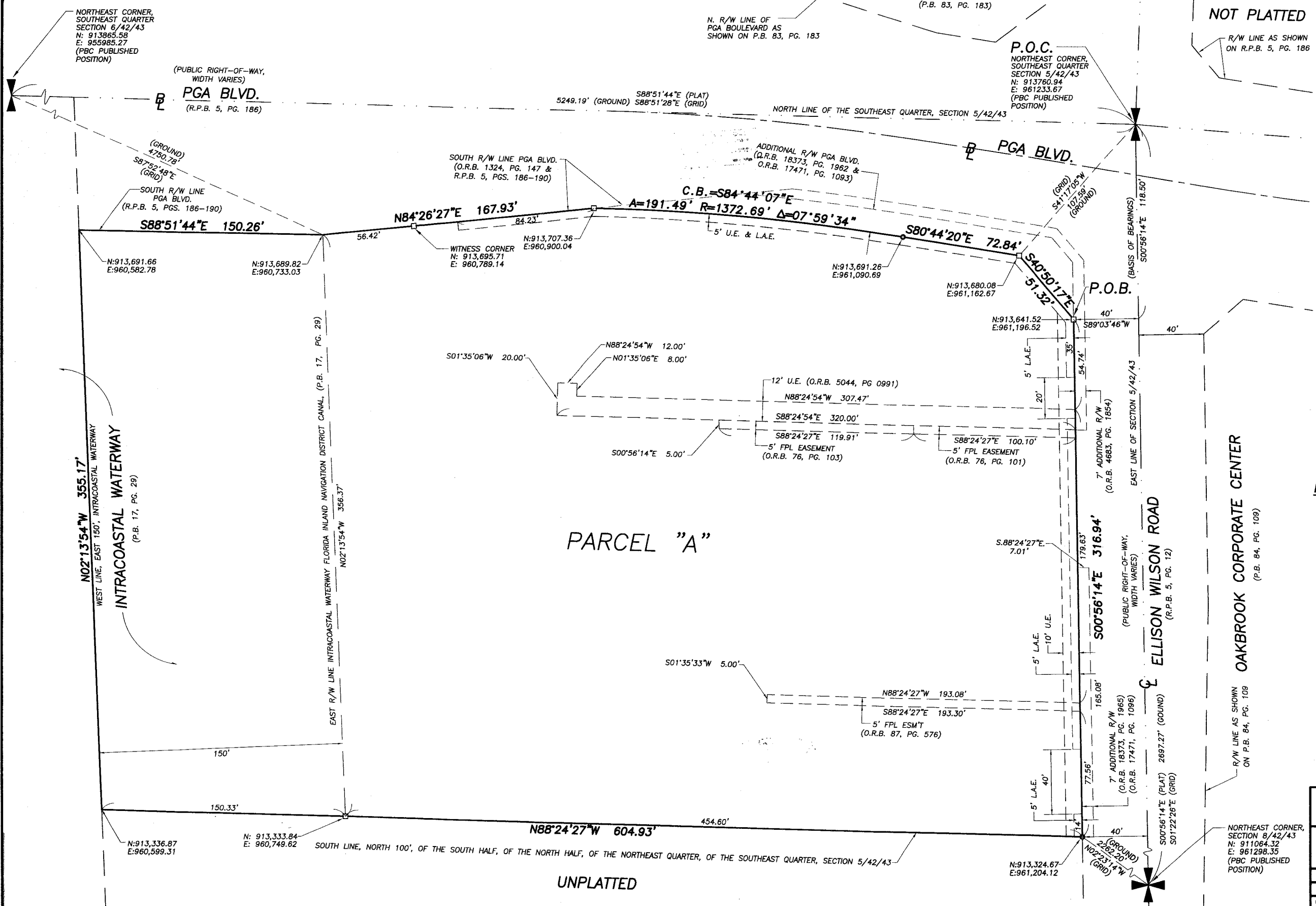
HATTIES LANDING M.U.P.D.

BEING A REPLAT OF A PORTION OF PARCEL No. 14 AND PARCEL No. 15 ACCORDING TO THE PLAT OF INTRACOASTAL WATERWAY AS RECORDED IN PLAT BOOK 17, PAGE 29 AND A PORTION OF SECTION 5, TOWNSHIP 42 SOUTH, RANGE 43 EAST, PALM BEACH COUNTY, FLORIDA
FEBRUARY, 2011

196



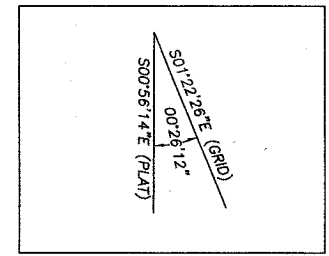
SHEET 2 OF 2



ABBREVIATIONS AND SYMBOLS

- 1. □ = Denotes Set Permanent Reference Monuments (P.R.M.'s). Stamped "P.R.M. L.S. # 3357"
- 2. ○ = 60d Nail & Disk Stamped "P.R.M. L.S. # 3357"
- 3. BL, B = Baseline
- 4. CL, C = Centerline
- 5. RW = Right of Way
- 6. P.B. = Plat Book
- 7. P.G.(S) = Pages
- 8. SEC. = Section
- 9. TWP. = Township
- 10. RGE. = Range
- 11. U.E. = Utility Easement
- 12. D.E. = Drainage Easement
- 13. D.B. = Deed Book
- 14. A = Arc Length
- 15. Δ = Central Angle
- 16. R = Radius
- 17. C.B. = Chord Bearing
- 18. O.R.B. = Official Records Book
- 19. R.P.B. = Road Plat Book
- 20. L.A.E. = Limited Access Easement
- 21. P.O.C. = Point of Commencement
- 22. P.O.B. = Point of Beginning
- 23. P.B.C. = Palm Beach County
- 24. FND. = Found
- 25. ESM/T = Easement
- 26. Wty = Westerly
- 27. F.P.L. = Florida Power and Light
- 28. S.S.E. = Safe Sight Easement
- 29. N = Nothing
- 30. E = Easting

BEARING ROTATION EQUATION



HATTIES LANDING M.U.P.D.

5655 VILLAGE BOULEVARD, WEST PALM BEACH, FLORIDA 33407 • (561) 840-0551			
FIELD	JOB NO: 91-1241.162	F.S.	PG.
OFFICE	M.B.	DATE: SEPTEMBER, 2010	DWG. NO: 91-1241-13
CK'D	C.W.	REF: 91-1241-13.DWG	SHEET 2 OF 2