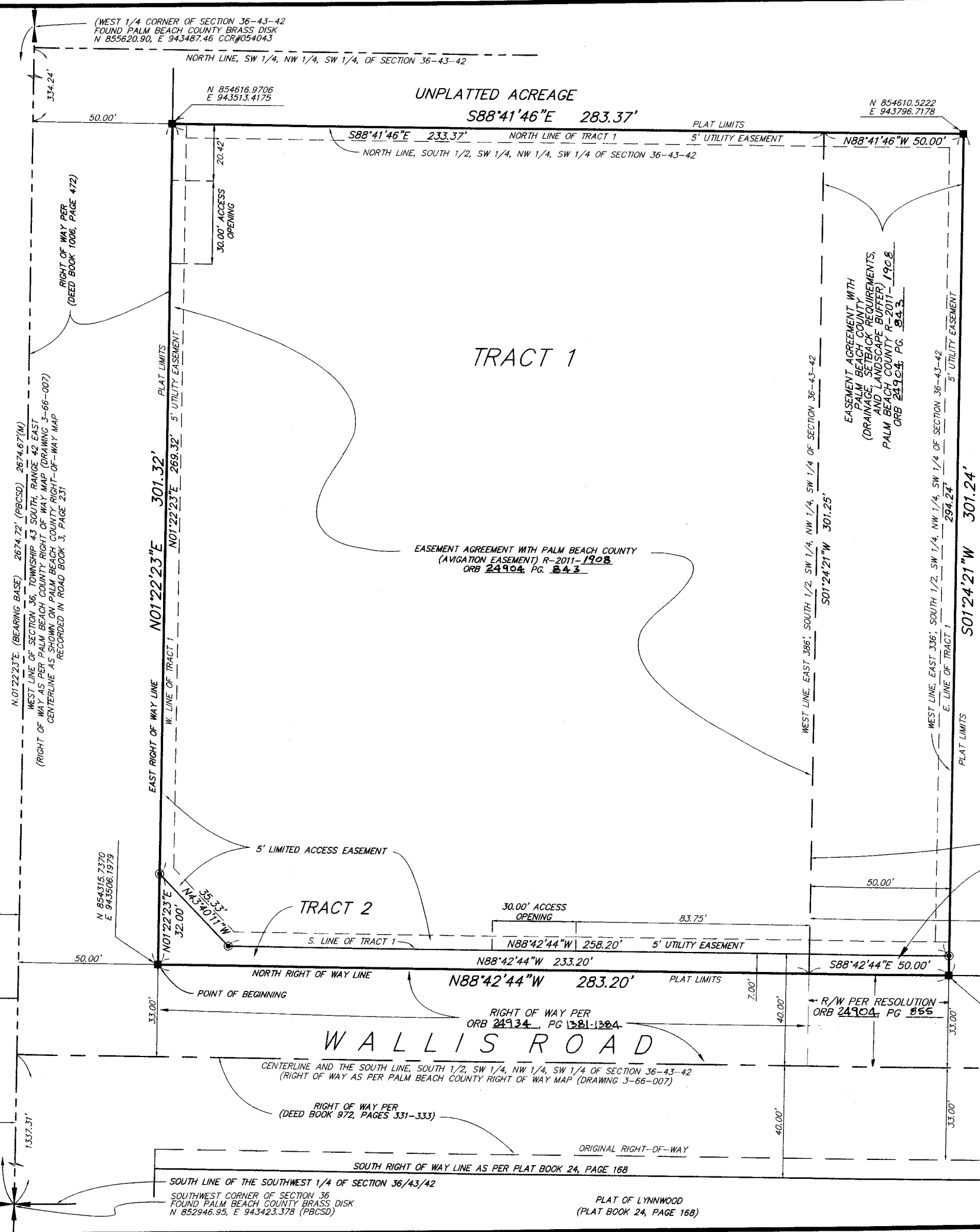


5802.000

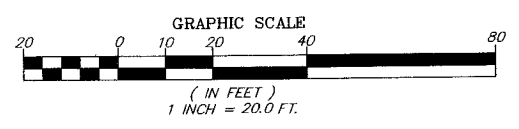
A PORTION OF TRACT 11, MODEL LAND COMPANY SUBDIVISION (PLAT BOOK 5, PAGE 77)
WEST RIGHT-OF-WAY PER D.R.B. 4456, PG. 577

A PORTION OF TRACT 49, MODEL LAND COMPANY SUBDIVISION (PLAT BOOK 5, PAGE 77)

H A V E R H I L L R O A D



LEGEND & ABBREVIATIONS
 ORB = OFFICIAL RECORDS BOOK
 PG. = PAGE
 P.R.M. = PERMANENT REFERENCE MONUMENT
 P.L.S. = PROFESSIONAL LAND SURVEYOR
 P.S.M. = PROFESSIONAL SURVEYOR AND MAPPER
 L.B. = LICENSED BUSINESS
 PB = PLAT BOOK
 FDOT = FLORIDA DEPARTMENT OF TRANSPORTATION
 S.F. = SQUARE FEET
 M = MEASURED
 CCR = CERTIFIED CORNER RECORD
 PBCSD = PALM BEACH COUNTY SECTION DATA
 ■ SET 4"x4" CONCRETE MONUMENT (PRM PLS 4134)
 ● SET 5/8" IRON ROD & CAP (LB 6018)



201
 STATE OF FLORIDA
 COUNTY OF PALM BEACH

THIS PLAT FILED FOR RECORD AT _____ M. THIS _____ DAY OF _____ 2011, AND DULY RECORDED IN PLAT BOOK NO. _____ ON PAGES _____ THROUGH _____

SHARON R. BOCK
 CLERK AND COMPTROLLER OF THE CIRCUIT COURT

BY _____
 DEPUTY CLERK

RACETRAC PETROLEUM AT HAVERHILL AND WALLIS

A PORTION OF THE SOUTH 1/2 OF THE SOUTHWEST 1/4 OF THE NORTHWEST 1/4 OF THE SOUTHWEST 1/4 OF SECTION 36, TOWNSHIP 43 SOUTH, RANGE 42 EAST, PALM BEACH COUNTY, FLORIDA.

SHEET 2 OF 2

PREPARED BY
BLOOMSTER PROFESSIONAL LAND SURVEYING, INC.
 641 NORTHEAST SPENCER STREET
 JENSEN BEACH, FLORIDA 34957
 PHONE (772) 334-0868
 FAX (772) 334-5283

UNPLATTED ACREAGE

TRACT 3
 RIGHT OF WAY PER RESOLUTION
 ORB 24904, PG 855

WALLIS ROAD

