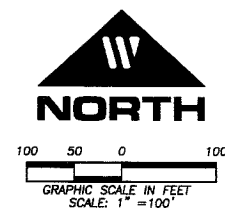
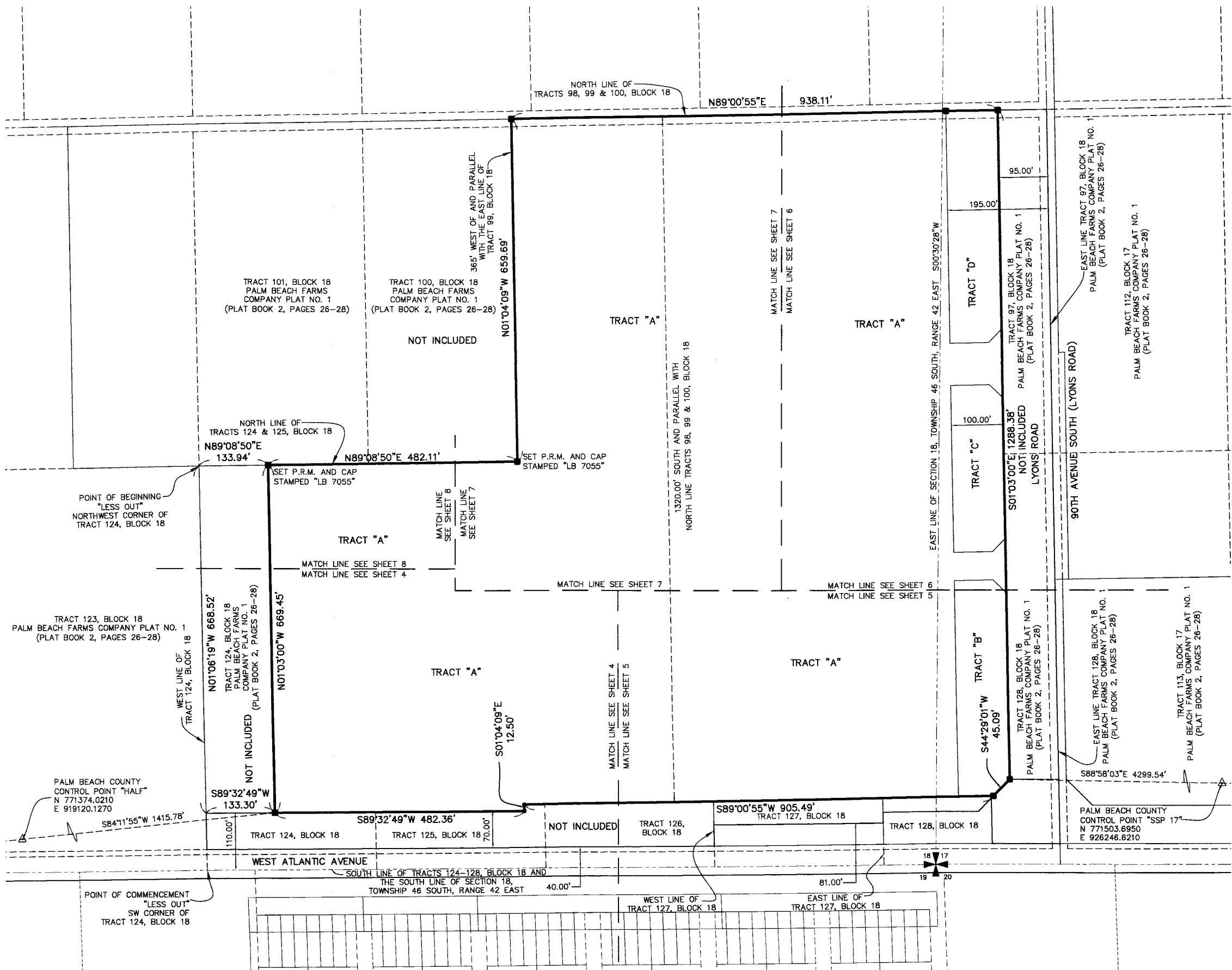
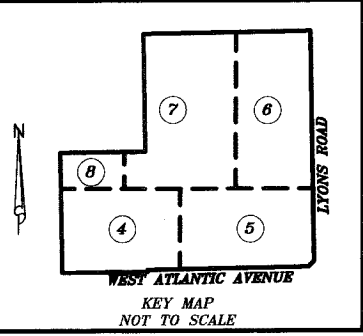


STATE OF FLORIDA
 COUNTY OF PALM BEACH
 THIS PLAT WAS FILED FOR
 RECORD AT _____ M.
 THIS _____ DAY OF _____
 A.D. 2012 AND DULY RECORDED
 IN PLAT BOOK _____ ON
 PAGES _____ THROUGH _____
 SHARON R. BOCK
 CLERK AND COMPTROLLER
 BY: _____
 DEPUTY CLERK

DELRAY MARKETPLACE

BEING A REPLAT OF TRACTS 98, 99 AND A PORTION OF TRACTS 97, 100 AND 124 THROUGH 128,
 ALL OF BLOCK 18, "PALM BEACH FARMS COMPANY PLAT NO. 1", AS RECORDED IN PLAT BOOK 2,
 PAGES 26 THROUGH 28, PUBLIC RECORDS OF PALM BEACH COUNTY, FLORIDA. SITUATE IN
 SECTIONS 17 AND 18, TOWNSHIP 46 SOUTH, RANGE 42 EAST, PALM BEACH COUNTY, FLORIDA.
 AUGUST 2011
 SHEET 3 OF 8



- LEGEND:
- CL = CENTER LINE
 - DE = DRAINAGE EASEMENT
 - LAE = LIMITED ACCESS EASEMENT
 - LB = LICENSED BUSINESS
 - LBE = LANDSCAPE BUFFER EASEMENT
 - ORB = OFFICIAL RECORDS BOOK
 - PB = PLAT BOOK
 - PBCUE = PALM BEACH COUNTY UTILITY EASEMENT
 - PG = PAGE(S)
 - P.R.M. = PERMANENT REFERENCE MONUMENT
 - POB = POINT OF BEGINNING
 - POC = POINT OF COMMENCEMENT
 - R/W = RIGHT OF WAY
 - UE = UTILITY EASEMENT
 - = FOUND (P.R.M.) PERMANENT REFERENCE MONUMENT & CAP STAMPED "LB 7055" UNLESS OTHERWISE NOTED
 - ① = PAGE NUMBER

WGI
 Wantman Group, Inc.
 Engineering ♦ Planning ♦ Surveying ♦ Environmental
 2035 VISTA PARKWAY, SUITE 100, WEST PALM BEACH, FL 33411
 (888) 909-2220 phone (561) 687-1110 fax
 CERTIFICATE OF AUTHORIZATION No. LB 7055
 ORLANDO - PORT ST. LUCIE - TAMPA
 THIS INSTRUMENT WAS PREPARED BY DEREK G. ZEMAN, P.S.M.
 PROFESSIONAL SURVEYOR AND MAPPER, LICENSE NO. 5655
 FOR THE FIRM: WANTMAN GROUP, INC.