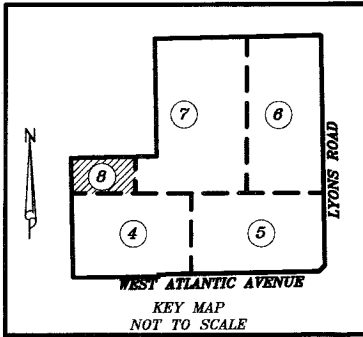
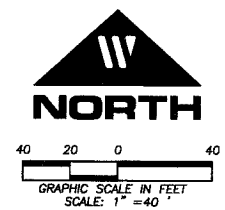
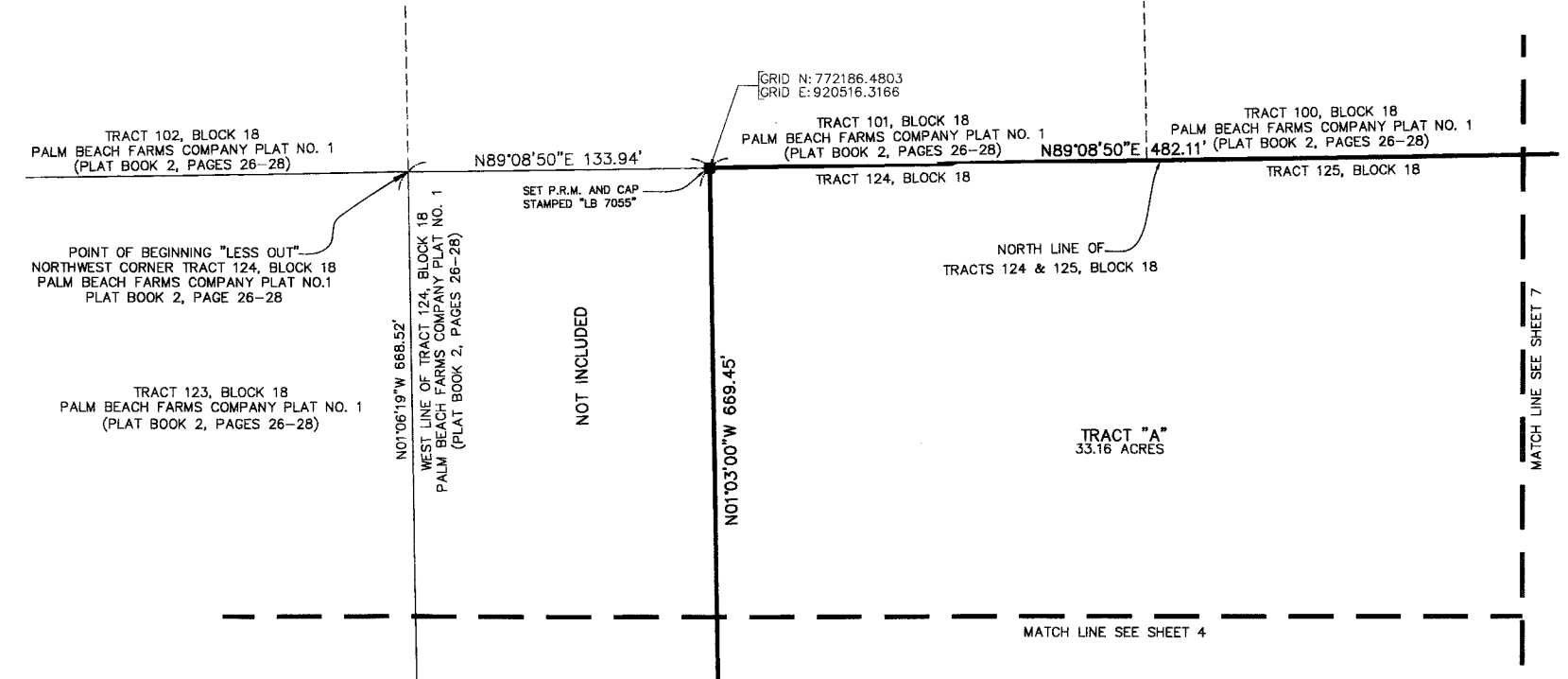


# DELRAY MARKETPLACE

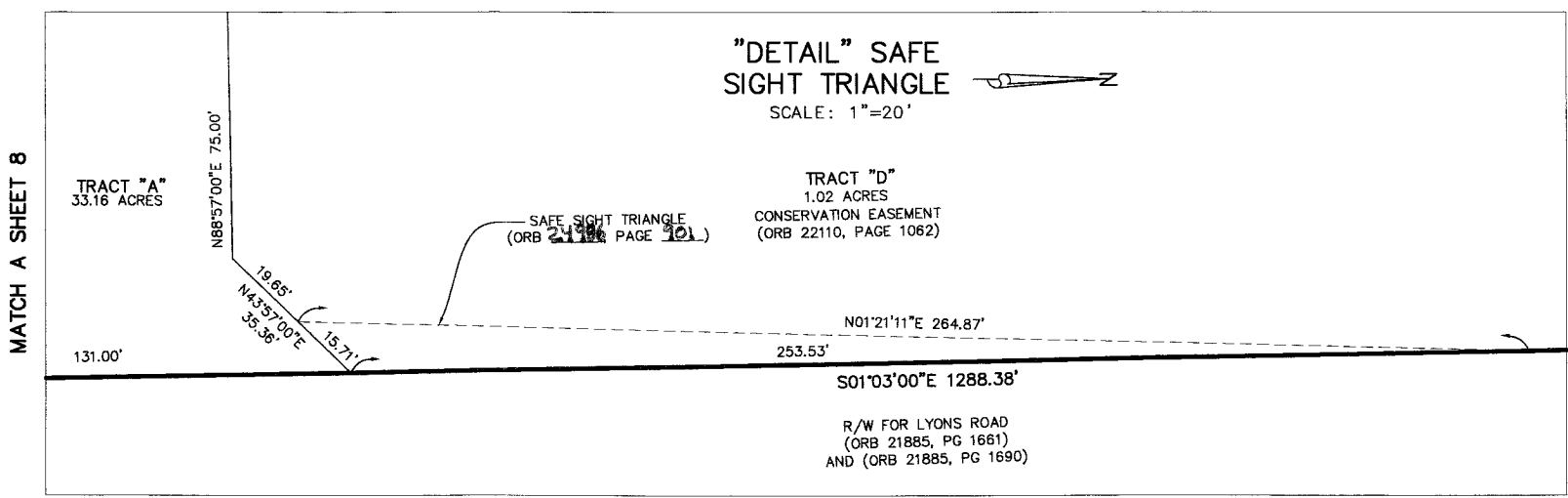
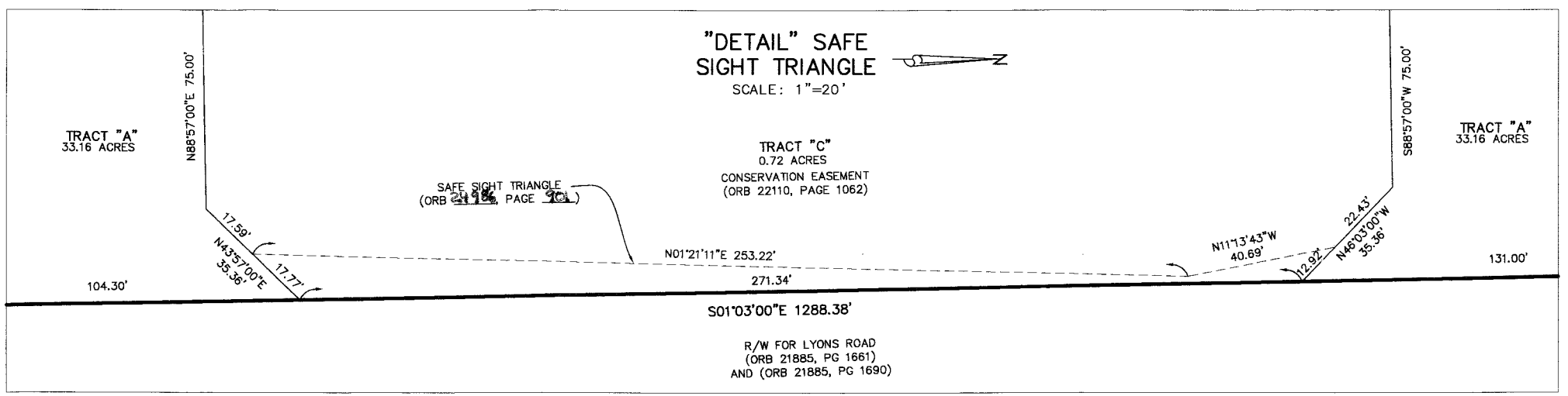
BEING A REPLAT OF TRACTS 98, 99 AND A PORTION OF TRACTS 97, 100 AND 124 THROUGH 128, ALL OF BLOCK 18, "PALM BEACH FARMS COMPANY PLAT NO. 1", AS RECORDED IN PLAT BOOK 2, PAGES 26 THROUGH 28, PUBLIC RECORDS OF PALM BEACH COUNTY, FLORIDA. SITUATE IN SECTIONS 17 AND 18, TOWNSHIP 46 SOUTH, RANGE 42 EAST, PALM BEACH COUNTY, FLORIDA.  
AUGUST 2011  
SHEET 8 OF 8



STATE OF FLORIDA  
COUNTY OF PALM BEACH  
THIS PLAT WAS FILED FOR  
RECORD AT \_\_\_\_\_ M.  
THIS \_\_\_\_\_ DAY OF \_\_\_\_\_  
A.D. 2012 AND DULY RECORDED  
IN PLAT BOOK \_\_\_\_\_ ON  
PAGES \_\_\_\_\_ THROUGH \_\_\_\_\_  
SHARON R. BOCK  
CLERK AND COMPTROLLER  
BY: \_\_\_\_\_  
DEPUTY CLERK



- LEGEND:
- CL = CENTERLINE
  - DE = DRAINAGE EASEMENT
  - LAE = LIMITED ACCESS EASEMENT
  - LB = LICENSED BUSINESS
  - LBE = LANDSCAPE BUFFER EASEMENT
  - ORB = OFFICIAL RECORDS BOOK
  - PB = PLAT BOOK
  - PBCUE = PALM BEACH COUNTY UTILITY EASEMENT
  - PG = PAGE(S)
  - P.R.M. = PERMANENT REFERENCE MONUMENT
  - POB = POINT OF BEGINNING
  - POC = POINT OF COMMENCEMENT
  - R/W = RIGHT OF WAY
  - UE = UTILITY EASEMENT
  - = FOUND (P.R.M.) PERMANENT REFERENCE MONUMENT & CAP STAMPED "LB 7055" UNLESS OTHERWISE NOTED
  - ③ = PAGE NUMBER



**WGI**  
Wantman Group, Inc.  
Engineering ♦ Planning ♦ Surveying ♦ Environmental  
2035 VISTA PARKWAY, SUITE 100, WEST PALM BEACH, FL 33411  
(866) 909-2220 phone (561) 687-1110 fax  
CERTIFICATE OF AUTHORIZATION No. LB 7055  
ORLANDO - PORT ST. LUCIE - TAMPA  
THIS INSTRUMENT WAS PREPARED BY DEREK G. ZEMAN, P.S.M.  
PROFESSIONAL SURVEYOR AND MAPPER, LICENSE NO. 5655  
FOR THE FIRM: WANTMAN GROUP, INC.