

KEY MAP
NOT TO SCALE

CASTELLINA

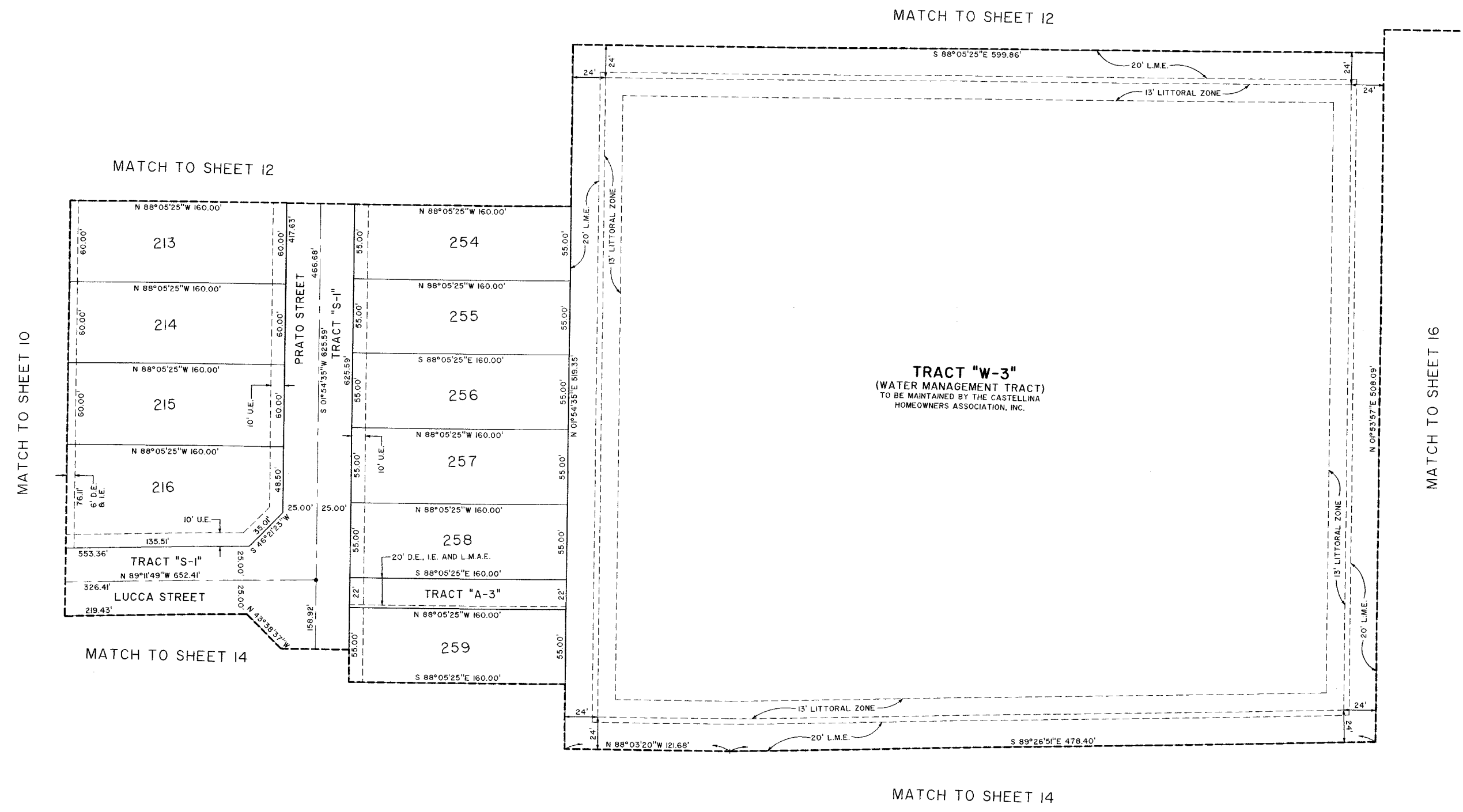
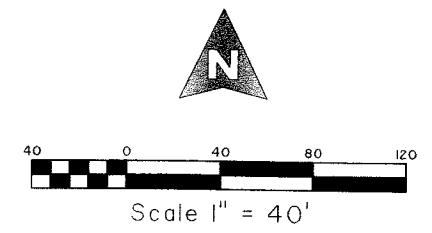
LYING IN SECTION 13, TOWNSHIP 44 SOUTH, RANGE 41 EAST, VILLAGE OF WELLINGTON,
PALM BEACH COUNTY, FLORIDA. BEING A REPLAT OF A PORTION OF LANIER PROPERTY AS
RECORDED IN PLAT BOOK 108, PAGES 75 THROUGH 91, PUBLIC RECORDS OF PALM BEACH
COUNTY, FLORIDA.

SHEET 13 OF 17

FEBRUARY, 2012

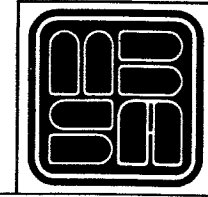
39

COUNTY OF PALM BEACH)
STATE OF FLORIDA) SS
THIS PLAT WAS FILED FOR RECORD
AT _____ M. THIS
DAY OF _____, 2012, AND
DULY RECORDED IN PLAT BOOK NO.
_____, ON PAGE _____ THRU
_____.
SHARON R. BOCK,
CLERK AND COMPTROLLER
BY: _____, D.C.



TRACT "W-3"
(WATER MANAGEMENT TRACT)
TO BE MAINTAINED BY THE CASTELLINA
HOMEOWNERS ASSOCIATION, INC.

SHEET 13 OF 17



**MICHAEL B. SCHORAH
& ASSOCIATES, INC.**
1850 FOREST HILL BLVD., SUITE 208
WEST PALM BEACH, FLORIDA 33406
EB# 2438 TEL. (561) 968-0080 FAX. (561) 642-9726 LBP 2438

CASTELLINA

Castellina (150)1301_PLAT.dwg, 2/14/2012 11:04 AM, LCB