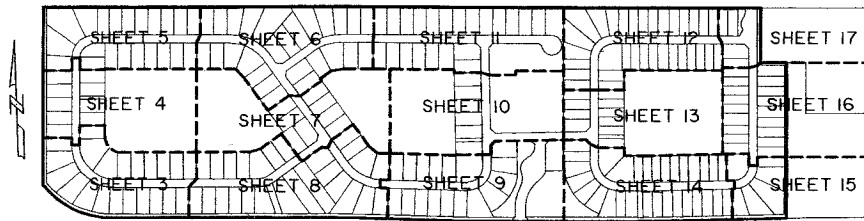


# CASTELLINA

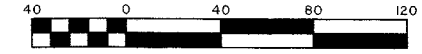
LYING IN SECTION 13, TOWNSHIP 44 SOUTH, RANGE 41 EAST, VILLAGE OF WELLINGTON, PALM BEACH COUNTY, FLORIDA. BEING A REPLAT OF A PORTION OF LANIER PROPERTY AS RECORDED IN PLAT BOOK 108, PAGES 75 THROUGH 91, PUBLIC RECORDS OF PALM BEACH COUNTY, FLORIDA.

SHEET 14 OF 17

FEBRUARY, 2012

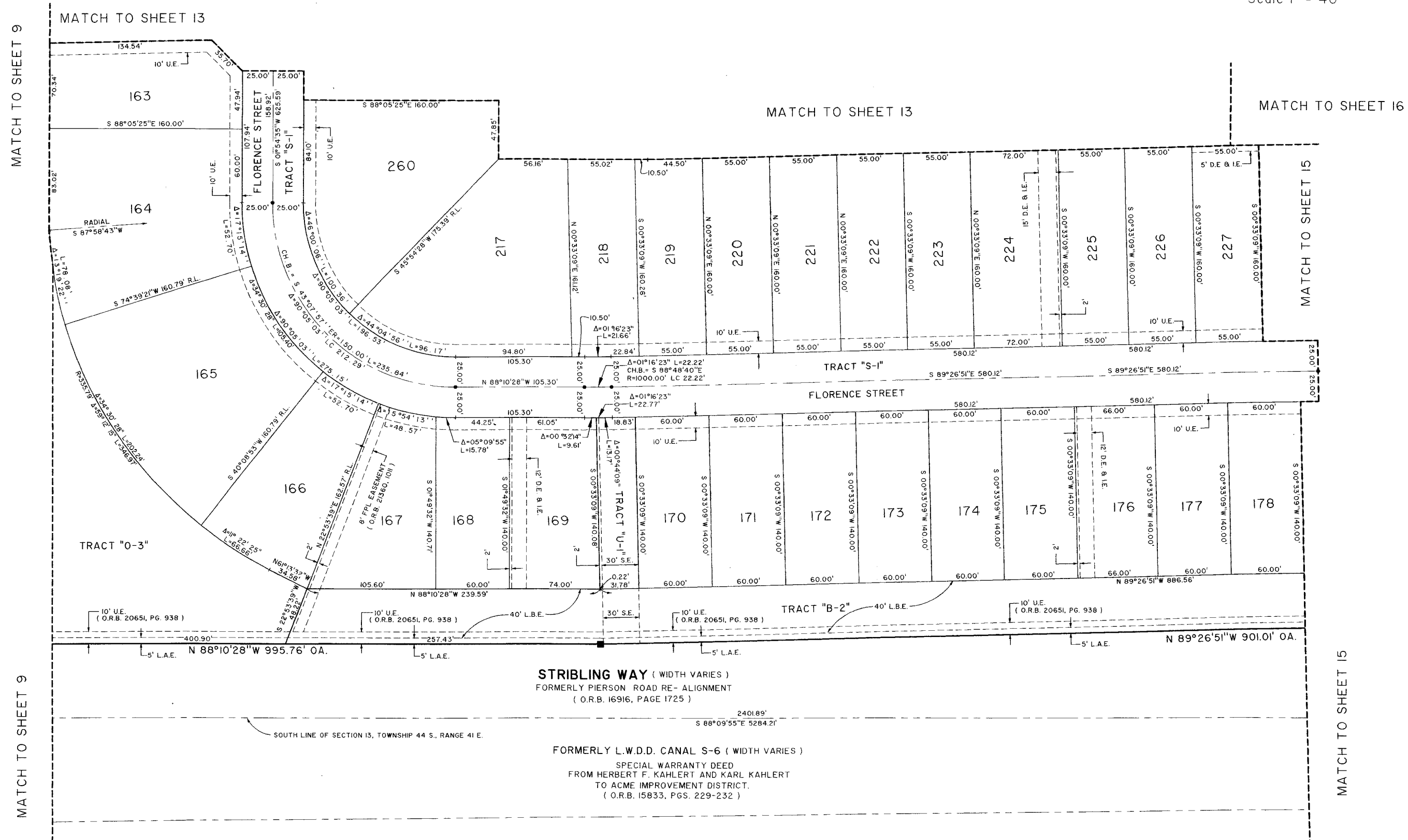


KEY MAP  
NOT TO SCALE



Scale 1" = 40'

COUNTY OF PALM BEACH )  
STATE OF FLORIDA ) SS  
THIS PLAT WAS FILED FOR RECORD  
AT \_\_\_\_\_ M. THIS  
DAY OF \_\_\_\_\_, 2012, AND  
DULY RECORDED IN PLAT BOOK NO.  
\_\_\_\_\_, ON PAGE \_\_\_\_\_ THRU  
\_\_\_\_\_  
SHARON R. BOCK,  
CLERK AND COMPTROLLER  
BY: \_\_\_\_\_, D.C.

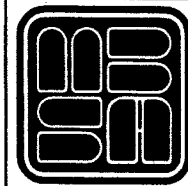


STRIBLING WAY ( WIDTH VARIES )  
FORMERLY PIERSON ROAD RE- ALIGNMENT  
( O.R.B. 16916, PAGE 1725 )

FORMERLY L.W.D.D. CANAL S-6 ( WIDTH VARIES )  
SPECIAL WARRANTY DEED  
FROM HERBERT F. KAHLERT AND KARL KAHLERT  
TO ACME IMPROVEMENT DISTRICT.  
( O.R.B. 15833, PGS. 229-232 )

PALM BEACH FARMS COMPANY PLAT NO. 3  
BLOCK 26, TRACTS I-4  
( PLAT BOOK 2, PAGES 45 - 54 )

SHEET 14 OF 17



MICHAEL B. SCHORAH  
& ASSOCIATES, INC.  
1850 FOREST HILL BLVD., SUITE 206  
WEST PALM BEACH, FLORIDA 33406  
EB# 2438 TEL. (561) 968-0080 FAX. (561) 642-9726 LB# 2438

CASTELLINA