

CASTELLINA

LYING IN SECTION 13, TOWNSHIP 44 SOUTH, RANGE 41 EAST, VILLAGE OF WELLINGTON, PALM BEACH COUNTY, FLORIDA. BEING A REPLAT OF A PORTION OF LANIER PROPERTY AS RECORDED IN PLAT BOOK 108, PAGES 75 THROUGH 91, PUBLIC RECORDS OF PALM BEACH COUNTY, FLORIDA.

SHEET 15 OF 17

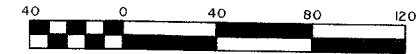
FEBRUARY, 2012

41

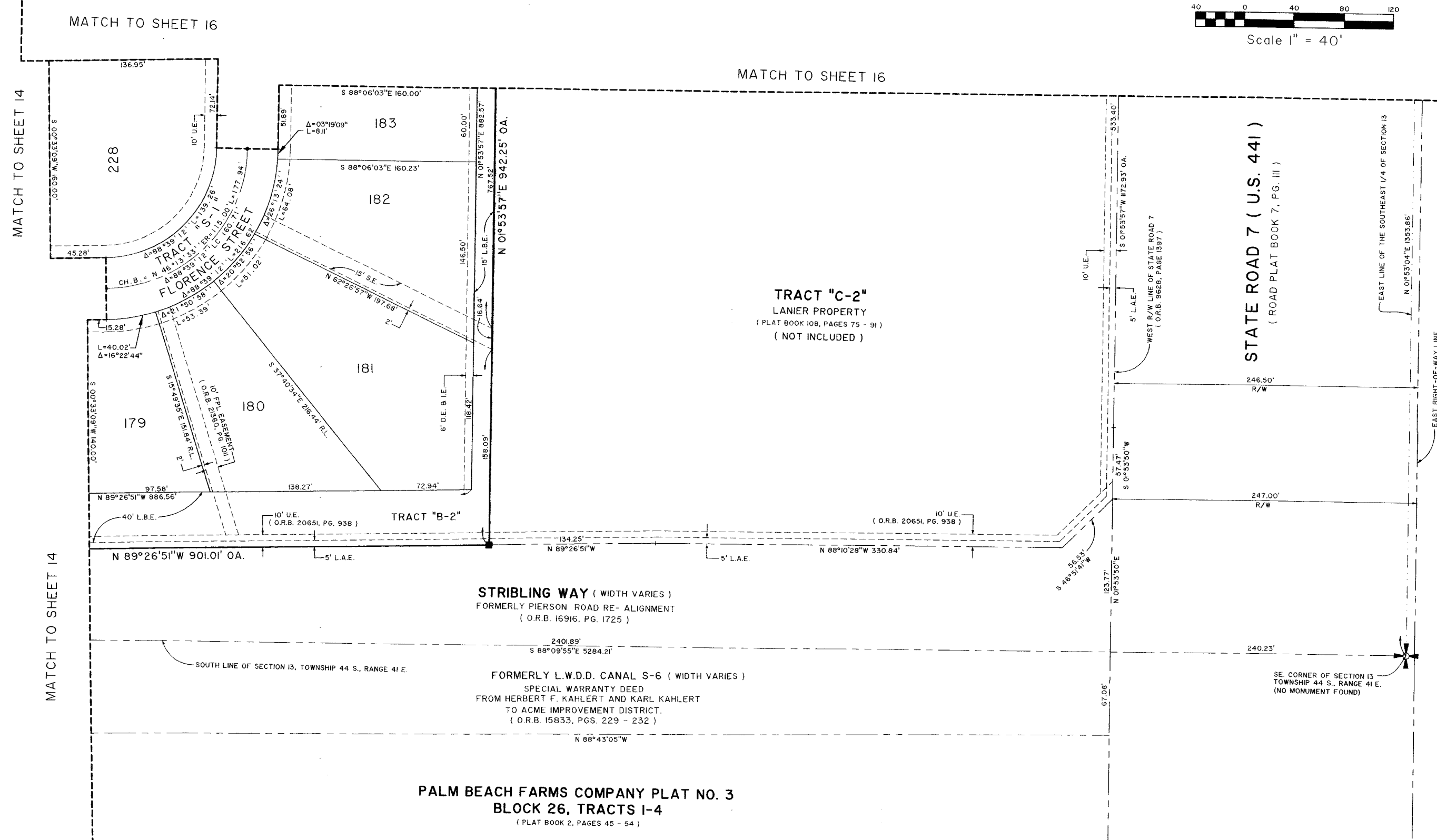
COUNTY OF PALM BEACH)
STATE OF FLORIDA) SS

THIS PLAT WAS FILED FOR RECORD AT _____ M. THIS _____ DAY OF _____, 2012, AND DULY RECORDED IN PLAT BOOK NO. _____ ON PAGE _____ THRU _____

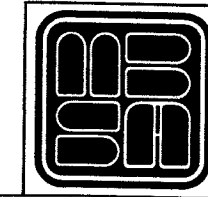
SHARON R. BOCK, CLERK AND COMPTROLLER BY: _____, D.C.



Scale 1" = 40'



SHEET 15 OF 17



MICHAEL B. SCHORAH & ASSOCIATES, INC.
1850 FOREST HILL BLVD., SUITE 206
WEST PALM BEACH, FLORIDA 33406
EB# 2438 TEL. (561) 668-0080 FAX. (561) 642-9726 LB# 2438

CASTELLINA

Z:\Castellina (1581)\S1_PLAT.dwg 2/24/2012 10:57:50 AM, LCB