



SURVEYING & MAPPING
Prepared by: Jeff S. Hodapp, P.S.M.
Certificate of Authorization No. LB7264
949A Clint Moore Road
Boca Raton, Florida 33487
Tel: (561) 241-9988
Fax: (561) 241-5182

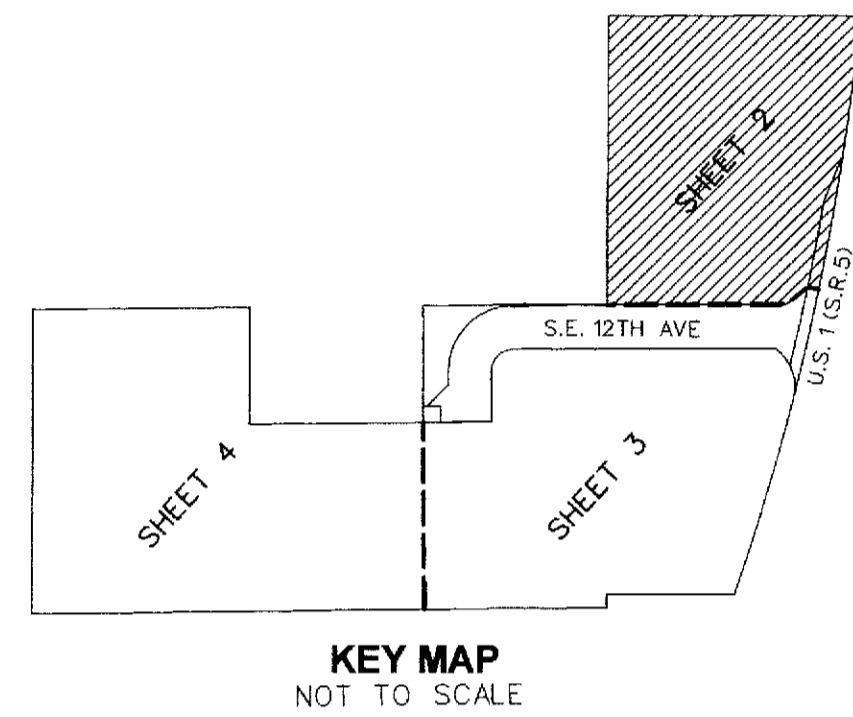
FRANKLIN AT DELRAY BEACH

ALL OF LOTS 4 AND 5, TOGETHER WITH A PORTION OF LOTS 1, 2, 3 AND 6, "LAMBERT TRAILER COURT", (P.B. 22, PG. 41, P.B.C.R.), TOGETHER WITH ALL OF "PROFESSIONAL OFFICE PLAZA FOR ACQUILANO", (P.B. 44, PG. 147, P.B.C.R.) TOGETHER WITH A PORTION OF THE NORTH 15 FEET OF THE SOUTH ONE-HALF OF THE SOUTHEAST 1/4 OF THE NORTHWEST 1/4 OF THE SOUTHWEST 1/4 OF SECTION 21, TOWNSHIP 46 SOUTH, RANGE 43 EAST, PALM BEACH COUNTY, FLORIDA, CITY OF DELRAY BEACH, PALM BEACH COUNTY, FLORIDA

FEBRUARY, 2012

75

SHEET 2 OF 4



LEGEND

- ⊙ • CENTERLINE
- ⊙ • PRM - SET PERMANENT REFERENCE MONUMENT
- LB7264, UNLESS NOTED OTHERWISE
- ⊙ • PERMANENT CONTROL POINT

ABBREVIATIONS:

- A.E. • ACCESS EASEMENT
- CH. • CHORD
- CHB. • CHORD BEARING
- CONC. • CONCRETE
- COR. • CORNER
- D. • DELTA (CENTRAL ANGLE)
- D.E. • DRAINAGE EASEMENT
- DIA. • DIAMETER
- F.D.O.T. • FLORIDA DEPARTMENT OF TRANSPORTATION
- F.P.U. • FLORIDA PUBLIC UTILITIES
- G.U.E. • GENERAL UTILITY EASEMENT
- I.P. • IRON PIPE
- IRC. • IRON ROD & CAP
- L. • ARC LENGTH
- L.B. • LICENSED BUSINESS
- L.S. • LICENSED SURVEYOR
- MON. • MONUMENT
- N.R. • NON-RADIAL
- O.R.B. • OFFICIAL RECORDS BOOK
- P.B.C.R. • PALM BEACH COUNTY RECORDS
- P.B. • PLAT BOOK
- PG. • PAGE
- P.C.P. • PERMANENT CONTROL POINT
- P.O.B. • POINT OF BEGINNING
- P.O.C. • POINT OF COMMENCEMENT
- P.R.M. • PERMANENT REFERENCE MONUMENT
- P.S.M. • PROFESSIONAL SURVEYOR & MAPPER
- R. • RADIUS
- R/W. • RIGHT-OF-WAY
- S.E. • SEWER EASEMENT
- SEC. • SECTION
- S.F. • SQUARE FEET
- U.E. • UTILITY EASEMENT
- W.E. • WATER EASEMENT

