

PERIMETER

SURVEYING & MAPPING
 Prepared by: Jeff S. Hodapp, P.S.M.
 Certificate of Authorization No. LB7264
 949A Clint Moore Road
 Boca Raton, Florida 33487
 Tel: (561) 241-9988
 Fax: (561) 241-5182

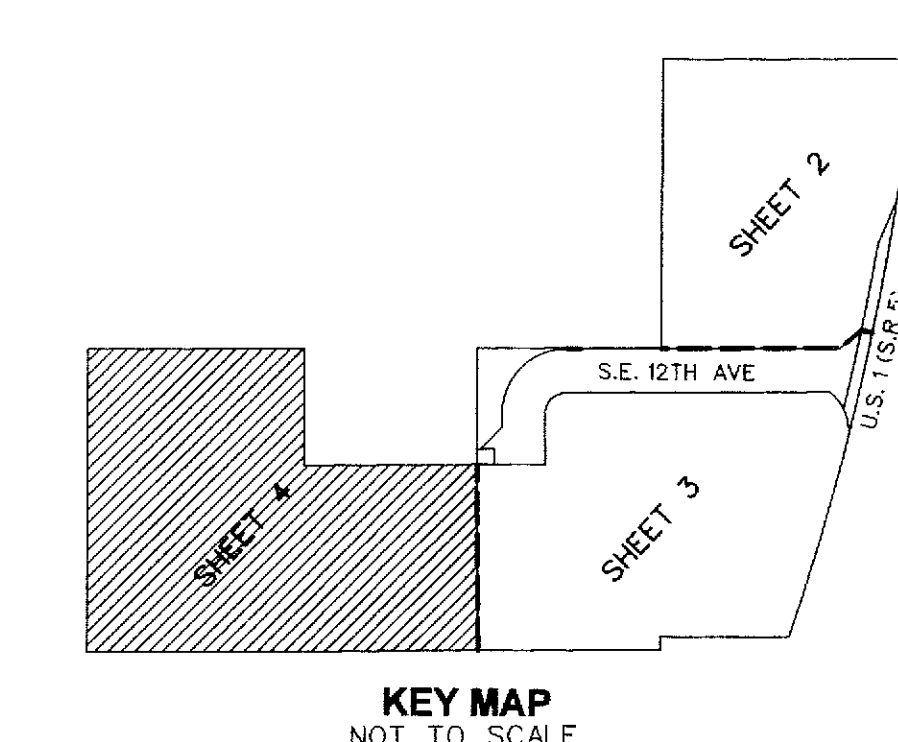
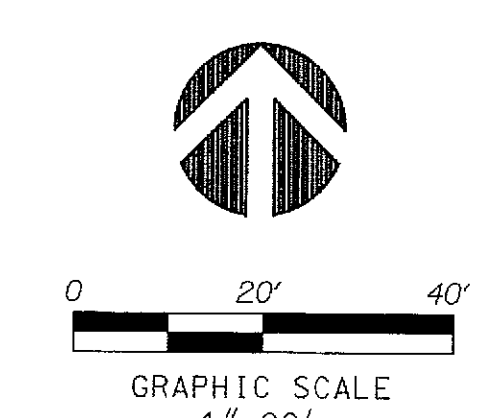
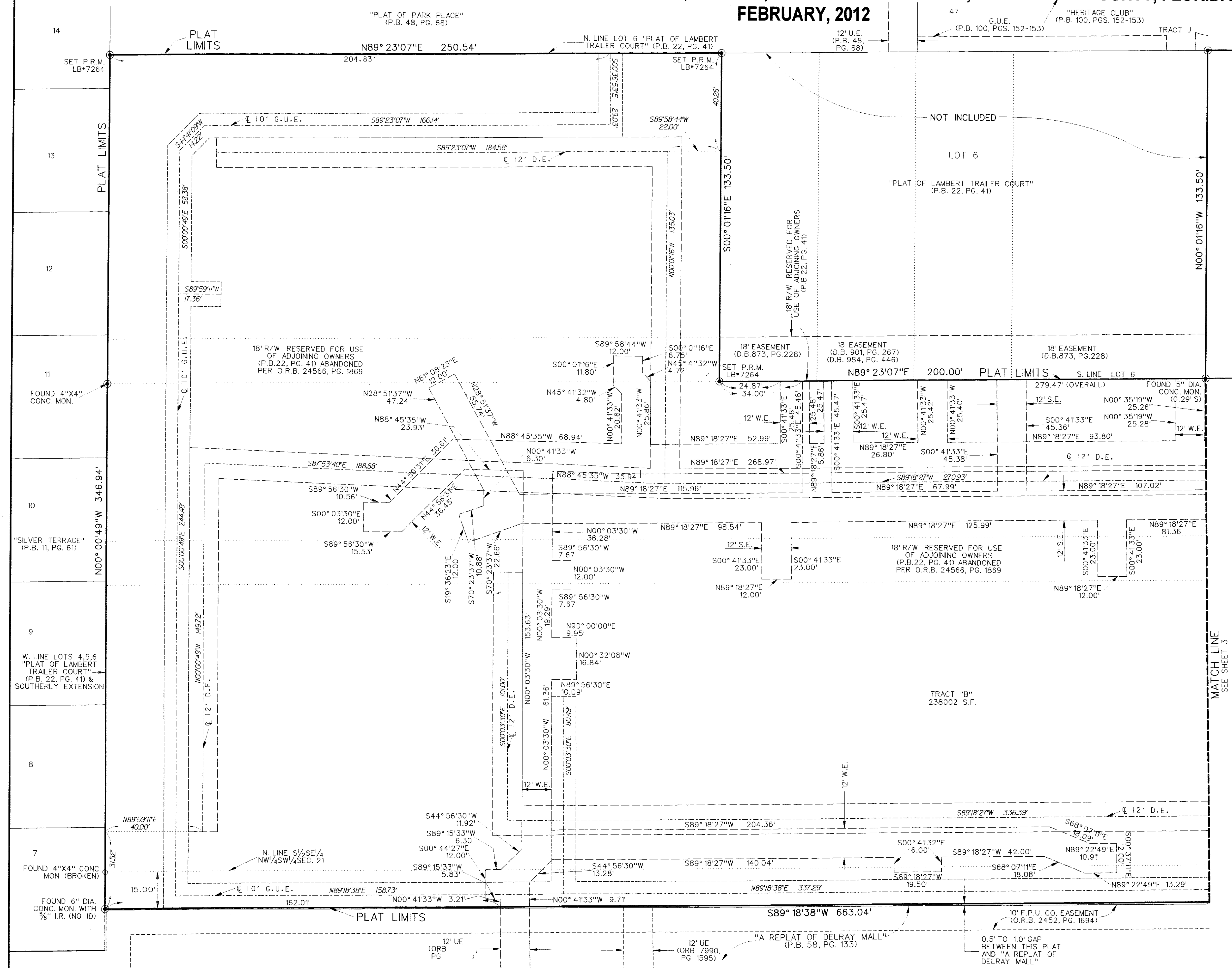
FRANKLIN AT DELRAY BEACH

ALL OF LOTS 4 AND 5, TOGETHER WITH A PORTION OF LOTS 1, 2, 3 AND 6, "LAMBERT TRAILER COURT", (P.B. 22, PG. 41, P.B.C.R.), TOGETHER WITH ALL OF "PROFESSIONAL OFFICE PLAZA FOR ACQUILANO", (P.B. 44, PG. 147, P.B.C.R.) TOGETHER WITH A PORTION OF THE NORTH 15 FEET OF THE SOUTH ONE-HALF OF THE SOUTHEAST 1/4 OF THE NORTHWEST 1/4 OF THE SOUTHWEST 1/4 OF SECTION 21, TOWNSHIP 46 SOUTH, RANGE 43 EAST, PALM BEACH COUNTY, FLORIDA, CITY OF DELRAY BEACH, PALM BEACH COUNTY, FLORIDA

FEBRUARY, 2012

77

SHEET 4 OF 4



- LEGEND**
- ⊙ = CENTERLINE
 - ⊙ = PRM - SET PERMANENT REFERENCE MONUMENT
 - = LB7264, UNLESS NOTED OTHERWISE
 - = PERMANENT CONTROL POINT

- ABBREVIATIONS:**
- A.E. = ACCESS EASEMENT
 - CH. = CHORD BEARING
 - CONC. = CONCRETE
 - COR. = CORNER
 - D. = DELTA (CENTRAL ANGLE)
 - D.E. = DRAINAGE EASEMENT
 - DIA. = DIAMETER
 - F.D.O.T. = FLORIDA DEPARTMENT OF TRANSPORTATION
 - F.P.U. = FLORIDA PUBLIC UTILITIES
 - G.U.E. = GENERAL UTILITY EASEMENT
 - I.P. = IRON PIPE
 - IRC = IRON ROD & CAP
 - L. = ARC LENGTH
 - L.B. = LICENSED BUSINESS
 - L.S. = LICENSED SURVEYOR
 - MON. = MONUMENT
 - N.R. = NON-RADIAL
 - O.R.B. = OFFICIAL RECORDS BOOK
 - P.B.C.R. = PALM BEACH COUNTY RECORDS
 - P.B. = PLAT BOOK
 - P.G. = PAGE
 - P.C.P. = PERMANENT CONTROL POINT
 - P.O.B. = POINT OF BEGINNING
 - P.O.C. = POINT OF COMMENCEMENT
 - P.R.M. = PERMANENT REFERENCE MONUMENT
 - P.S.M. = PROFESSIONAL SURVEYOR & MAPPER
 - R. = RADIUS
 - R/W = RIGHT-OF-WAY
 - S.E. = SEWER EASEMENT
 - SEC. = SECTION
 - S-F. = SQUARE FEET
 - U.E. = UTILITY EASEMENT
 - W.E. = WATER EASEMENT

MATCH LINE
SEE SHEET 3