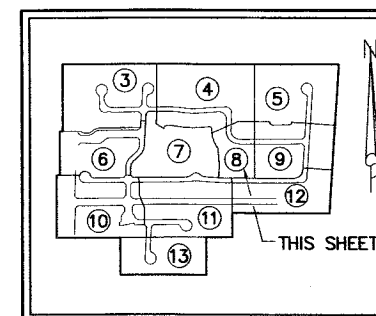


OSPREY OAKS P.U.D.

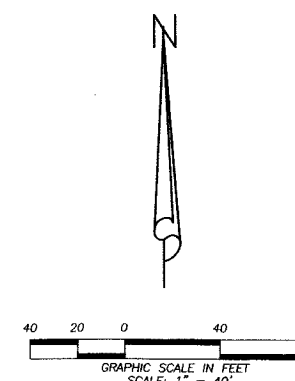
A PARCEL OF LAND LYING WITHIN THE NORTHEAST ONE-QUARTER OF SECTION 10, TOWNSHIP 45 SOUTH, RANGE 42 EAST, PALM BEACH COUNTY, FLORIDA
SHEET 8 OF 13

STATE OF FLORIDA)
 COUNTY OF PALM BEACH) S.S.

THIS INSTRUMENT WAS FILED FOR RECORD AT _____ M. THIS _____ DAY OF _____ 20____ AND DULY RECORDED IN: PLAT BOOK _____ ON PAGE _____ SHARON R. BOCK CLERK & COMPTROLLER PALM BEACH COUNTY BY _____ DEPUTY CLERK



KEY MAP NOT TO SCALE



LEGEND

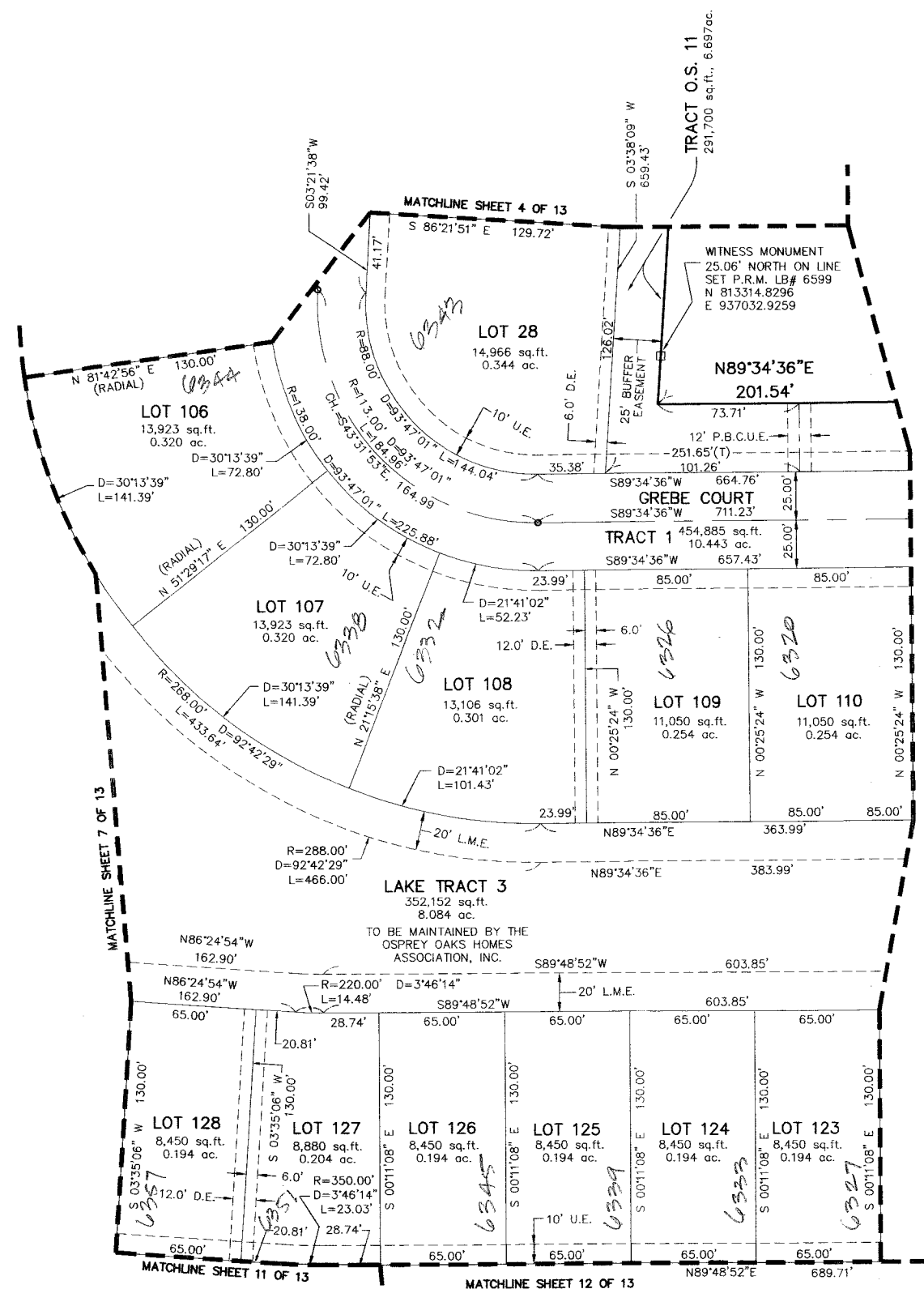
- D = CENTRAL ANGLE
- L = ARC LENGTH
- L.A.E. = LIMITED ACCESS EASEMENT
- LB = LICENSED BUSINESS
- L.M.A.E. = LAKE MAINTENANCE ACCESS EASEMENT
- L.M.E. = LAKE MAINTENANCE EASEMENT
- O.R.B. = OFFICIAL RECORD BOOK
- P.B. = PLAT BOOK
- P.B.C.R. = PALM BEACH COUNTY RECORDS
- P.B.C.L.S.E. = PALM BEACH COUNTY LIFT STATION EASEMENT
- P.B.C.U.E. = PALM BEACH COUNTY UTILITY EASEMENT
- P.C.N. = PARCEL CONTROL NUMBER
- PG. = PAGE(S)
- P.R.M. = PERMANENT REFERENCE MONUMENT
- R = RADIUS
- U.E. = UTILITY EASEMENT
- (T) = TOTAL
- ⊙ = PERMANENT REFERENCE MONUMENT (P.R.M.) 4" X 4" CONCRETE MONUMENT WITH P.K. NAIL IN BRASS DISC STAMPED "PRM LB 6599"
- = (P.C.P.) SET MAG NAIL IN BRASS DISC LB 6599

COORDINATE TRANSLATION DATA

- COORDINATES SHOWN ARE GRID
- DATUM = NAD 83 1990 ADJUSTMENT
- ZONE = FLORIDA EAST
- LINEAR UNIT = US SURVEY FEET
- COORDINATE SYSTEM 1983 STATE PLANE TRANSVERSE MERCATOR PROJECTION
- GROUND DISTANCE X SCALE FACTOR = GRID DISTANCE
- ALL DISTANCES ARE GROUND UNLESS OTHERWISE NOTED
- SCALE FACTOR = 1.0000329

S 80°22'36" E (PLAT) = 00°00'00" BEARING ROTATION
 S 80°22'36" E (GRID) = (PLAT TO GRID)

LINE BETWEEN AND PALM BEACH COUNTY SURVEY SECTION HORIZONTAL CONTROL MONUMENT "CHAR-LAKE" AND "COURSE"



THIS INSTRUMENT WAS PREPARED BY:
 DAVID A. BOWER, P.S.M. #5888 IN THE OFFICES
 OF DENNIS J. LEAVY AND ASSOCIATES, INC.
 CERTIFICATE OF AUTHORIZATION NUMBER: LB6599
 460 BUSINESS PARK WAY, SUITE B
 ROYAL PALM BEACH, FLORIDA 33411
 PHONE: (561) 753-0650
 FAX: (561) 753-0290

DENNIS J. LEAVY & ASSOCIATES, INC.
LAND SURVEYORS AND MAPPERS

460 BUSINESS PARK WAY • SUITE B • ROYAL PALM BEACH, FL • 33411
 PHONE: (561) 753-0650 FAX: (561) 753-0290

SCALE: AS SHOWN CHECKED BY: DAB DATE: 01/04/11
 DRAWN BY: RRM JOB NO.: 10-062-001