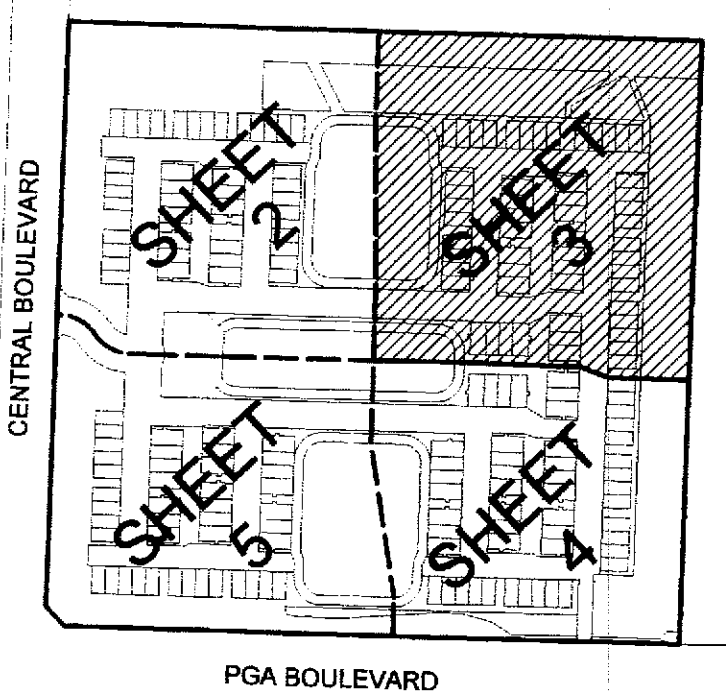
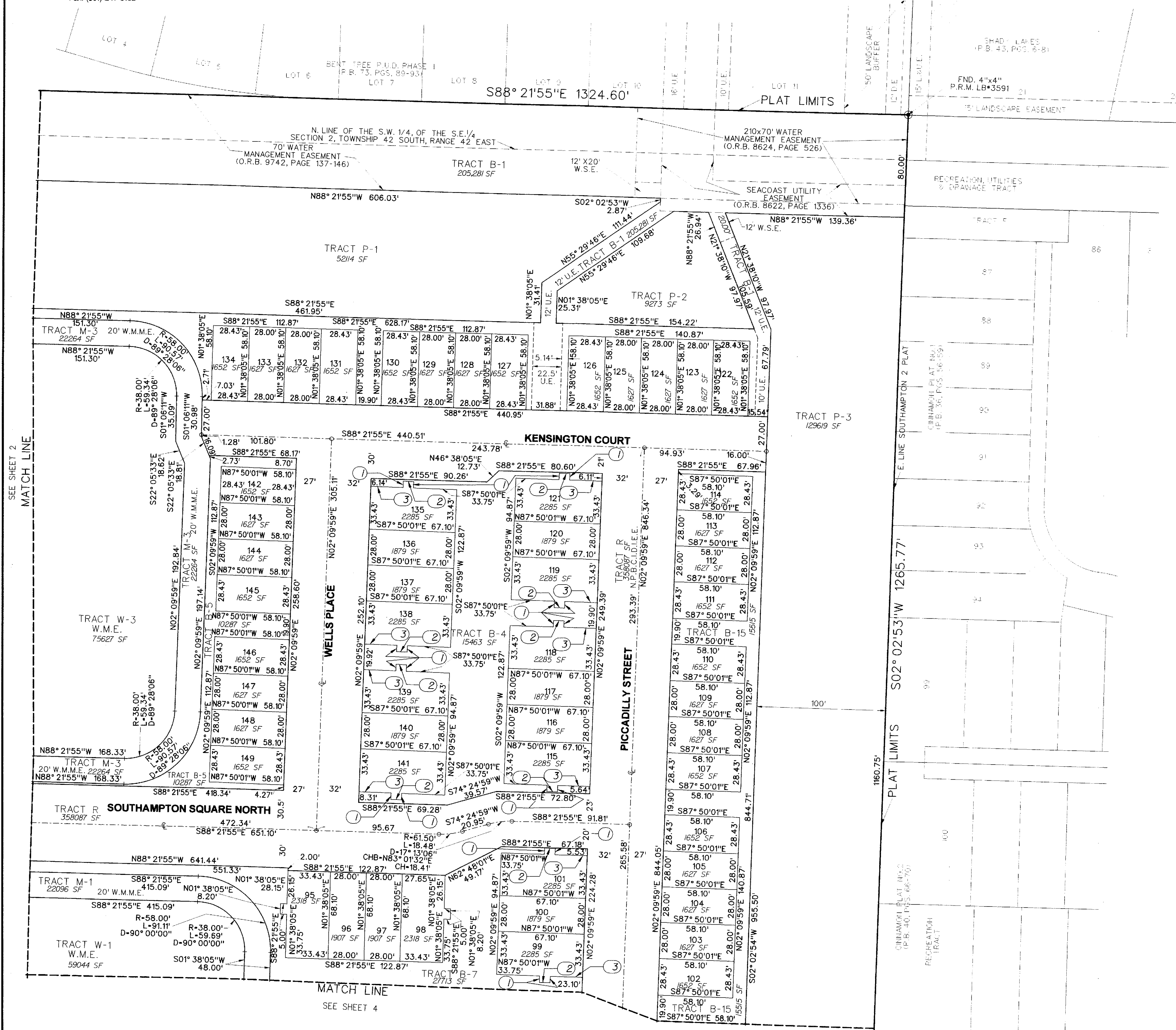
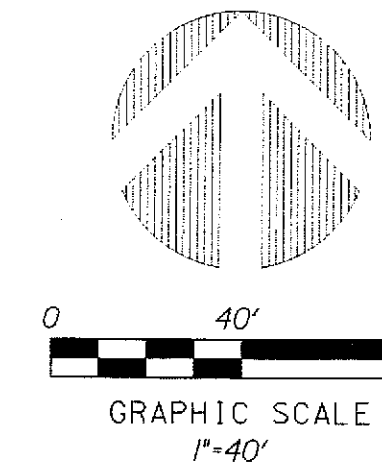


PERIMETER

SURVEYING & MAPPING
 Certificate of Authorization No. LB7264
 Prepared by Jeff S. Hodapp, P.S.M.
 949A Clint Moore Road
 Boca Raton, Florida 33487
 Tel: (561) 241-9988
 Fax: (561) 241-5182

SOUTHAMPTON 2 REPLAT

A REPLAT OF ALL OF "SOUTHAMPTON 2", (P.B. 107, PGS 123-131, P.B.C.R.)
 LYING IN SECTION 2, TOWNSHIP 42 SOUTH, RANGE 42 EAST,
 CITY OF PALM BEACH GARDENS, PALM BEACH COUNTY, FLORIDA.
 JANUARY 2012



LOCATION MAP
 NOT TO SCALE

LINE TABLE

1.	N02°09'59"E	5.00'
2.	N87°50'01"W	8.20'
3.	N87°50'01"W	25.15'

LEGEND:

- SET P.R.M. (UNLESS OTHERWISE NOTED)-4" DIAMETER ALUMINUM DISK IN CONC. MON. STAMPED •LB7264
- PERMANENT CONTROL POINT
- CENTERLINE
- LINE TABLE DESIGNATION

ABBREVIATIONS:

- A.C. ACRES
- B.E. BUFFER EASEMENT
- CH CHORD
- CHB CHORD BEARING
- CONC. CONCRETE
- COR. CORNER
- D. DELTA (CENTRAL ANGLE)
- D.E. DRAINAGE EASEMENT
- I.E.E. INGRESS-EGRESS EASEMENT
- I.R. IRON ROD
- I.R.C. IRON ROD AND CAP
- L. LENGTH
- L.A.E. LIMITED ACCESS EASEMENT
- L.B. LICENSED BUSINESS
- L.B.E. LANDSCAPE BUFFER EASEMENT
- L.M.A.E. LAKE MAINTENANCE ACCESS EASEMENT
- L.S. LICENSED SURVEYOR
- L.S.E. LIFT STATION EASEMENT
- MON. MONUMENT
- N.P.B.C.I.D. NORTHERN PALM BEACH COUNTY IMPROVEMENT DISTRICT
- O.E. OVERHANG EASEMENT
- O.R.B. OFFICIAL RECORDS BOOK
- N.R. NON-RADIAL
- P.B. PLAT BOOK
- P.B.C.R. PALM BEACH COUNTY RECORDS
- P.E. PEDESTRIAN EASEMENT
- P.G. PAGE
- P.C.P. PERMANENT CONTROL POINT
- P.O.B. POINT OF BEGINNING
- P.O.C. POINT OF COMMENCEMENT
- P.R.M. PERMANENT REFERENCE MONUMENT
- P.S.M. PROFESSIONAL SURVEYOR & MAPPER
- P.U.D. PLANNED UNIT DEVELOPMENT
- R. RADIUS
- R.L. RADIAL LINE
- R/W. RIGHT-OF-WAY
- S.E. SEWER EASEMENT
- SEC. SECTION
- S.F. SQUARE FEET
- U.E. UTILITY EASEMENT
- W.M.E. WATER MANAGEMENT EASEMENT
- W.M.M.E. WATER MANAGEMENT MAINTENANCE EASEMENT
- W.S.E. WATER AND SEWER EASEMENT

SEE SHEET 2
 MATCH LINE

MATCH LINE
 SEE SHEET 4