

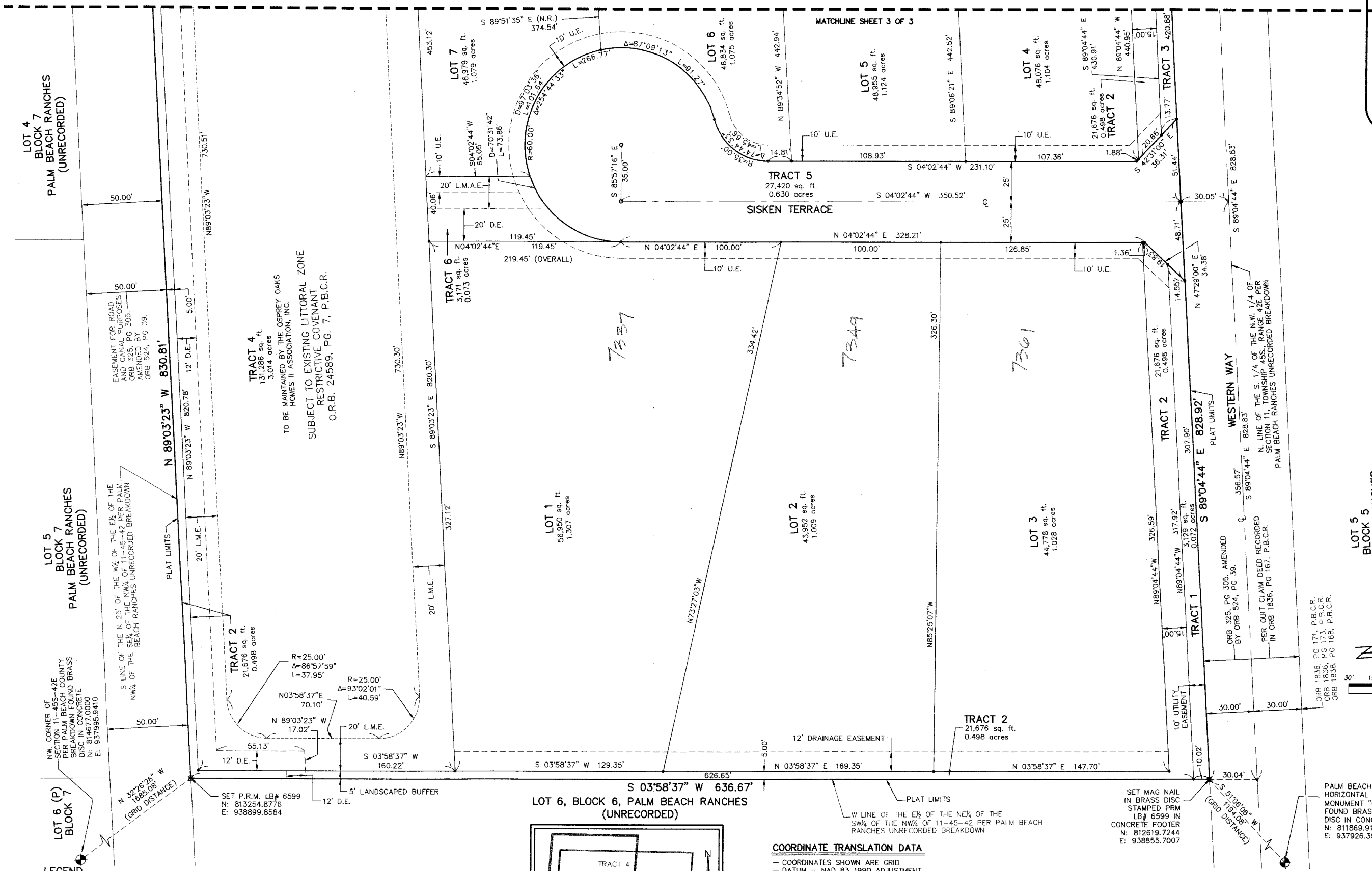
0943.000

OSPREY OAKS PARCEL NO.'S 2 AND 3

A PARCEL OF LAND LYING WITHIN THE NORTHWEST ONE-QUARTER OF SECTION 11, TOWNSHIP 45 SOUTH, RANGE 42 EAST, PALM BEACH COUNTY, FLORIDA
SHEET 2 OF 3

STATE OF FLORIDA)
COUNTY OF PALM BEACH) S.S.

THIS INSTRUMENT WAS FILED FOR RECORD AT _____ M. THIS _____ DAY OF _____ 20____ AND DULY RECORDED IN: PLAT BOOK _____ ON PAGE _____ SHARON R. BOCK CLERK & COMPTROLLER PALM BEACH COUNTY BY: _____ DEPUTY CLERK

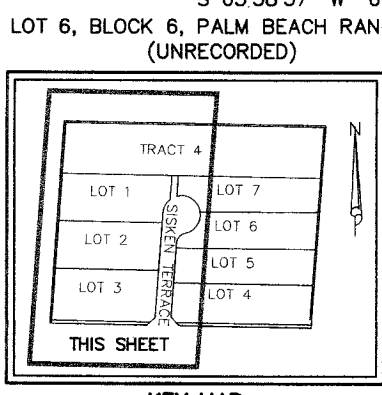


TRACT 4
13,726 sq. ft.
3.014 acres
TO BE MAINTAINED BY THE OSPREY OAKS HOMES II ASSOCIATION, INC. SUBJECT TO EXISTING LITTORAL ZONE RESTRICTIVE COVENANT O.R.B. 24589, PG. 7, P.B.C.R.

LOT 5
BLOCK 7
PALM BEACH RANCHES
(UNRECORDED)

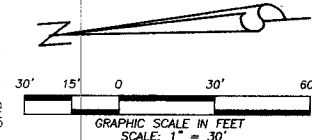
LOT 4
BLOCK 7
PALM BEACH RANCHES
(UNRECORDED)

LOT 5
BLOCK 5
PALM BEACH RANCHES
(UNRECORDED)



COORDINATE TRANSLATION DATA
- COORDINATES SHOWN ARE GRID
- DATUM = NAD 83 1990 ADJUSTMENT
- ZONE = FLORIDA EAST
- LINEAR UNIT = US SURVEY FEET
- COORDINATE SYSTEM 1983 STATE PLANE TRANSVERSE MERCATOR PROJECTION
- GROUND DISTANCE X SCALE FACTOR = GRID DISTANCE
- ALL DISTANCES ARE GROUND UNLESS OTHERWISE NOTED
- SCALE FACTOR = 1.0000329
N 01°25'16" E (PLAT) 00°00'00"
N 01°25'16" E (GRID) = BEARING ROTATION (PLAT TO GRID)
LINE BETWEEN THE NORTHWEST CORNER OF SECTION 11-45S-42E AND PALM BEACH COUNTY SURVEY SECTION HORIZONTAL CONTROL MONUMENT "COURSE"

- LEGEND**
- Δ = CENTRAL ANGLE
 - D.E. = DRAINAGE EASEMENT
 - L = ARC LENGTH
 - L.A.T. = LAKE ACCESS TRACT
 - LB = LICENSED BUSINESS
 - L.M.A.E. = LAKE MAINTENANCE ACCESS EASEMENT
 - L.M.E. = LAKE MAINTENANCE EASEMENT
 - (N.R.) = NON-RADIAL
 - O.R.B. = OFFICIAL RECORD BOOK
 - P.B.C.R. = PALM BEACH COUNTY RECORDS
 - P.C. = PAGE(S)
 - P.R.M. = PERMANENT REFERENCE MONUMENT
 - P.S.M. = PROFESSIONAL SURVEYOR AND MAPPER
 - R = RADIUS
 - S.F. = SQUARE FEET
 - U.E. = UTILITY EASEMENT
 - = PERMANENT REFERENCE MONUMENT (P.R.M.) 4" X 4" CONCRETE MONUMENT WITH P.K. NAIL IN BRASS DISC STAMPED "PRM LB 6599"
 - ⊙ = SET 5/8" X 18" IRON ROD & CAP LB 6599
 - = (P.C.P.) SET MAG NAIL IN BRASS DISC LB 6599



DENNIS J. LEAVY & ASSOCIATES, INC.
LAND SURVEYORS AND MAPPERS
460 BUSINESS PARK WAY • SUITE B • ROYAL PALM BEACH, FL • 33411
PHONE: (561) 753-0650 FAX: (561) 753-0290

SCALE: AS SHOWN	CHECKED BY: DJL	DATE: 01/04/11
DRAWN BY: DAB	JOB NO.: 10-063-001	

THIS INSTRUMENT WAS PREPARED BY: DAVID A. BOWER, P.S.M. #5888 IN THE OFFICES OF DENNIS J. LEAVY AND ASSOCIATES, INC. CERTIFICATE OF AUTHORIZATION NUMBER: LB6599 460 BUSINESS PARK WAY, SUITE B ROYAL PALM BEACH, FLORIDA 33411 PHONE: (561) 753 - 0650 FAX: (561) 753 - 0290