

SOUTHERN WASTE SYSTEMS, SUN IV, M.U.P.D.

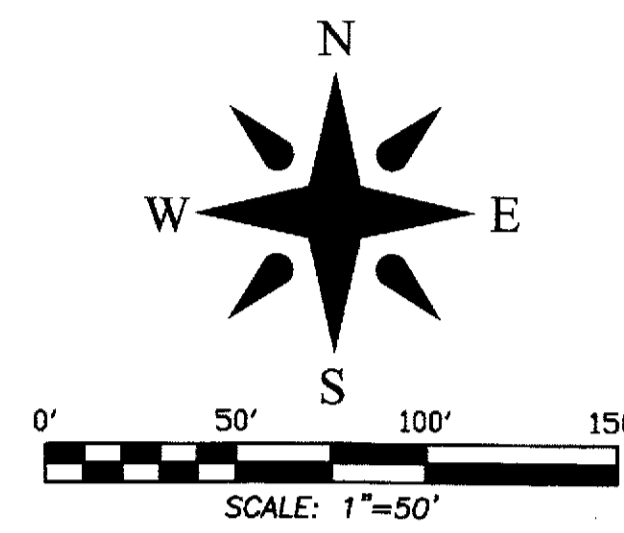
BEING A REPLAT OF A PORTION OF TRACT 51, BLOCK 5, PALM BEACH FARMS COMPANY PLAT No. 3 ACCORDING TO THE PLAT THEREOF, RECORDED IN PLAT BOOK 2, PAGE 45, PUBLIC RECORDS OF PALM BEACH COUNTY, FLORIDA, LYING IN SECTION 33, TOWNSHIP 43 SOUTH, RANGE 42 EAST, PALM BEACH COUNTY, FLORIDA. JANUARY, 2012

ABBREVIATIONS AND SYMBOLS

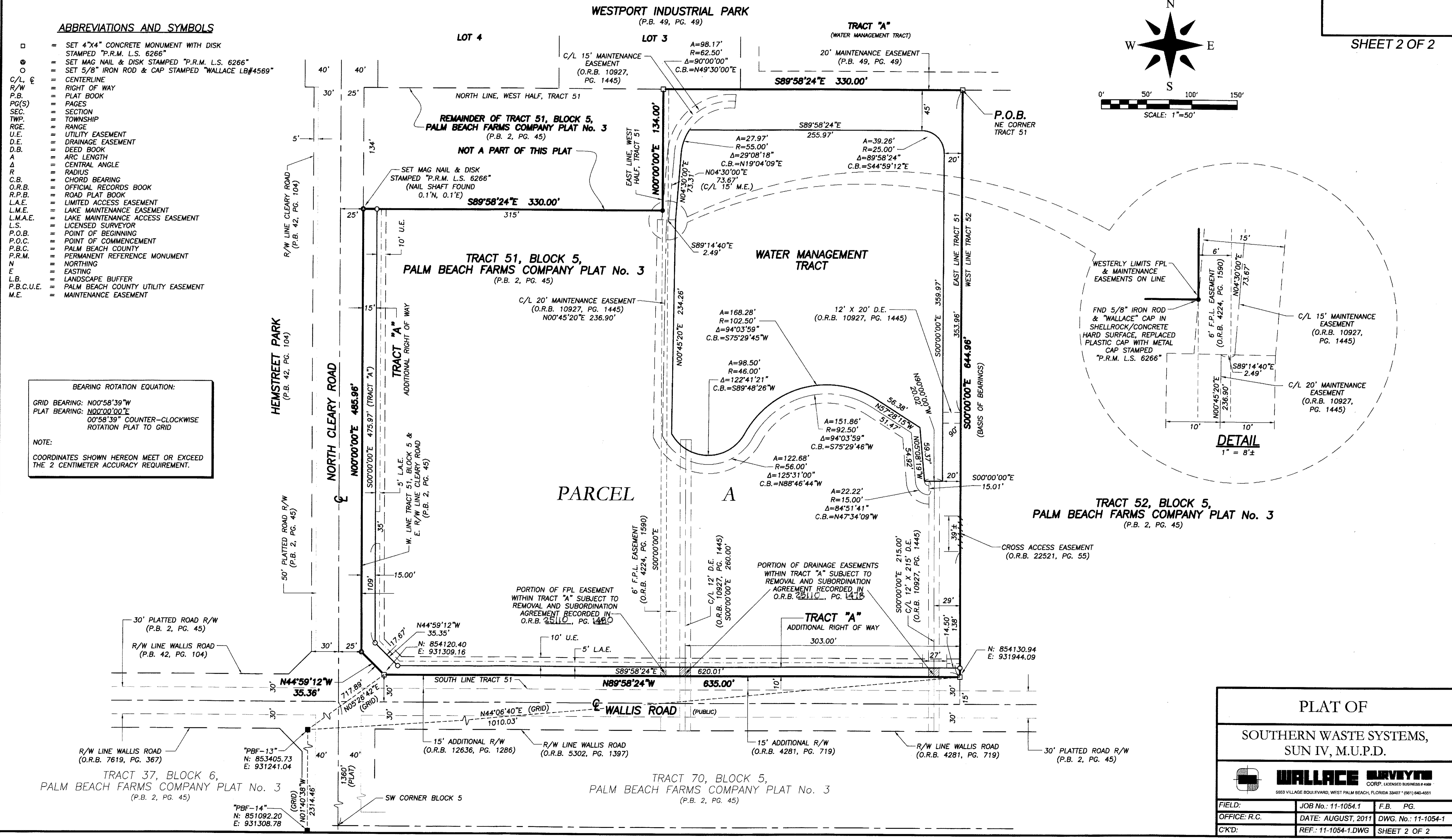
- = SET 4"x4" CONCRETE MONUMENT WITH DISK STAMPED "P.R.M. L.S. 6266"
- = SET MAG. NAIL & DISK STAMPED "P.R.M. L.S. 6266"
- = SET 5/8" IRON ROD & CAP STAMPED "WALLACE LB#4569"
- C/L = CENTERLINE
- R/W = RIGHT OF WAY
- P.B. = PLAT BOOK
- PG(S) = PAGE(S)
- SEC. = SECTION
- TWP. = TOWNSHIP
- RGE. = RANGE
- U.E. = UTILITY EASEMENT
- D.E. = DRAINAGE EASEMENT
- D.B. = DEED BOOK
- A = ARC LENGTH
- R = RADIUS
- C.B. = CHORD BEARING
- O.R.B. = OFFICIAL RECORDS BOOK
- R.P.B. = ROAD PLAT BOOK
- L.A.E. = LIMITED ACCESS EASEMENT
- L.M.E. = LAKE MAINTENANCE EASEMENT
- L.M.A.E. = LAKE MAINTENANCE ACCESS EASEMENT
- L.S. = LICENSED SURVEYOR
- P.O.B. = POINT OF BEGINNING
- P.O.C. = POINT OF COMMENCEMENT
- P.B.C. = PALM BEACH COUNTY
- P.R.M. = PERMANENT REFERENCE MONUMENT
- N = NORTHING
- E = EASTING
- L.B. = LANDSCAPE BUFFER
- P.B.C.U.E. = PALM BEACH COUNTY UTILITY EASEMENT
- M.E. = MAINTENANCE EASEMENT

BEARING ROTATION EQUATION:
 GRID BEARING: N00°58'39"W
 PLAT BEARING: N00°00'00"E
 00°58'39" COUNTER-CLOCKWISE ROTATION PLAT TO GRID

NOTE:
 COORDINATES SHOWN HEREON MEET OR EXCEED THE 2 CENTIMETER ACCURACY REQUIREMENT.



SHEET 2 OF 2



PLAT OF		
SOUTHERN WASTE SYSTEMS, SUN IV, M.U.P.D.		
WALLACE SURVYNG		
<small>CORP. LICENSED BUSINESS # 4089 5653 VILLAGE BOULEVARD, WEST PALM BEACH, FLORIDA 33407 * (561) 840-4251</small>		
FIELD:	JOB No.: 11-1054.1	F.B. PG.
OFFICE: R.C.	DATE: AUGUST, 2011	DWG. No.: 11-1054-1
CK'D:	REF: 11-1054-1.DWG	SHEET 2 OF 2