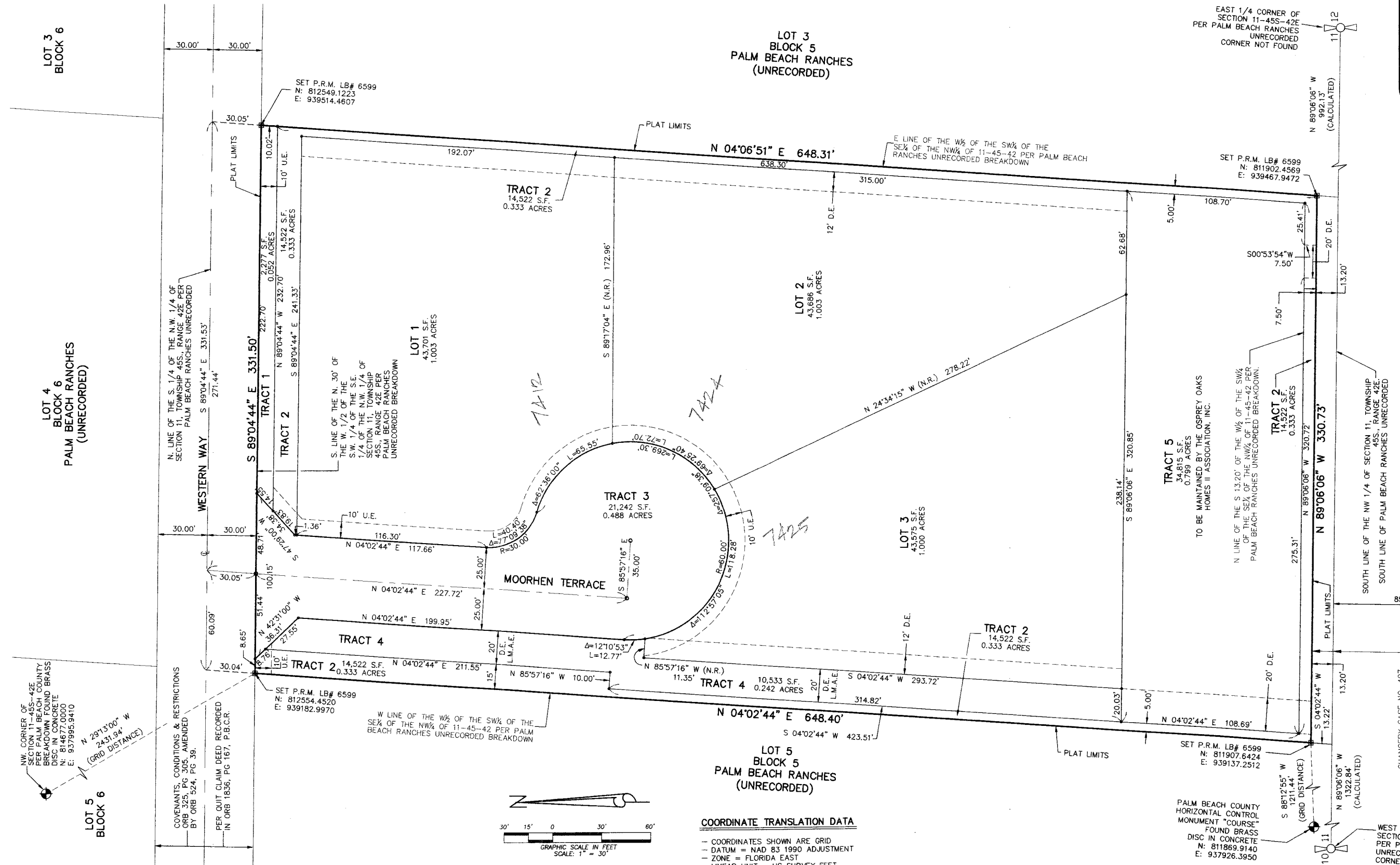


OSPREY OAKS PARCEL NO. 5

A PARCEL OF LAND LYING WITHIN THE NORTHWEST ONE-QUARTER OF SECTION 11, TOWNSHIP 45 SOUTH, RANGE 42 EAST, PALM BEACH COUNTY, FLORIDA SHEET 2 OF 2

STATE OF FLORIDA)
COUNTY OF PALM BEACH) S.S.

THIS INSTRUMENT WAS FILED FOR RECORD AT _____ M. THIS _____ DAY OF _____ 20 _____ AND DULY RECORDED IN: PLAT BOOK _____ ON PAGE _____ SHARON R. BOCK CLERK & COMPTROLLER PALM BEACH COUNTY BY: _____ DEPUTY CLERK



LEGEND

- Δ = CENTRAL ANGLE
- D.E. = DRAINAGE EASEMENT
- L = ARC LENGTH
- L.A.T. = LAKE ACCESS TRACT
- LB = LICENSED BUSINESS
- L.M.A.E. = LAKE MAINTENANCE ACCESS EASEMENT
- (N.R.) = NON-RADIAL
- O.R.B. = OFFICIAL RECORD BOOK
- P.B.C.R. = PALM BEACH COUNTY RECORDS
- PG. = PAGE(S)
- P.R.M. = PERMANENT REFERENCE MONUMENT
- P.S.M. = PROFESSIONAL SURVEYOR AND MAPPER
- R = RADIUS
- S.F. = SQUARE FEET
- U.E. = UTILITY EASEMENT
- = PERMANENT REFERENCE MONUMENT (P.R.M.) 4" X 4" CONCRETE MONUMENT WITH P.K. NAIL IN BRASS DISC STAMPED "PRM LB 6599"
- = SET 5/8" X 18" IRON ROD & CAP LB 6599
- = (P.C.P.) SET MAG NAIL IN BRASS DISC LB 6599

COORDINATE TRANSLATION DATA

- COORDINATES SHOWN ARE GRID
- DATUM = NAD 83 1990 ADJUSTMENT
- ZONE = FLORIDA EAST
- LINEAR UNIT = US SURVEY FEET
- COORDINATE SYSTEM 1983 STATE PLANE TRANSVERSE MERCATOR PROJECTION
- GROUND DISTANCE X SCALE FACTOR = GRID DISTANCE
- ALL DISTANCES ARE GROUND UNLESS OTHERWISE NOTED
- SCALE FACTOR = 1.0000329

N 01°25'16" E (PLAT) 00°00'00" = BEARING ROTATION
 N 01°25'16" E (GRID) (PLAT TO GRID)

LINE BETWEEN THE NORTHWEST CORNER OF SECTION 11-45S-42E AND PALM BEACH COUNTY SURVEY SECTION HORIZONTAL CONTROL MONUMENT "COURSE"

THIS INSTRUMENT WAS PREPARED BY: DAVID A. BOWER, P.S.M. #5888 IN THE OFFICES OF DENNIS J. LEAVY AND ASSOCIATES, INC. CERTIFICATE OF AUTHORIZATION NUMBER: LB6599 460 BUSINESS PARK WAY, SUITE B ROYAL PALM BEACH, FLORIDA 33411 PHONE: (561) 753-0650 FAX: (561) 753-0290

DENNIS J. LEAVY & ASSOCIATES, INC.

LAND SURVEYORS AND MAPPERS

460 BUSINESS PARK WAY • SUITE B • ROYAL PALM BEACH, FL • 33411
 PHONE: (561) 753-0650 FAX: (561) 753-0290

SCALE: AS SHOWN CHECKED BY: DJL DATE: 01/04/11
 DRAWN BY: DAB JOB NO.: 10-065-001

UNPLATTED LANDS OF BOYNTON BEACH GOLF COURSE

L.W.D.D. L-19 CANAL 85.0' WIDE CANAL EASEMENT (O.R.B. 3879, PG. 664, P.B.C.R.)

SOUTH LINE OF THE NW 1/4 OF SECTION 11, TOWNSHIP 45S., RANGE 42E. SOUTH LINE OF PALM BEACH RANCHES UNRECORDED

TO BE MAINTAINED BY THE OSPREY OAKS HOMES II ASSOCIATION, INC.

TRACT 5 34,815 S.F. 0.789 ACRES

TRACT 2 14,522 S.F. 0.333 ACRES

LOT 3 43,575 S.F. 1.000 ACRES

TRACT 3 21,242 S.F. 0.488 ACRES

LOT 1 43,701 S.F. 1.003 ACRES

LOT 2 43,686 S.F. 1.003 ACRES

TRACT 2 14,522 S.F. 0.333 ACRES

LOT 3 BLOCK 6

LOT 4 BLOCK 6 PALM BEACH RANCHES (UNRECORDED)

LOT 5 BLOCK 6

DATE PLOTTED: 01/04/11 10:00 AM