

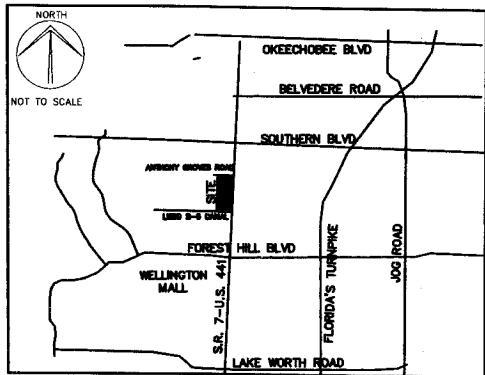
122

# ARCHSTONE-FUTURA ENCLAVE

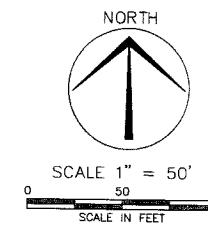
BEING A PARCEL OF LAND LYING IN THE EAST (1/2) OF SECTION 1, TOWNSHIP 44 SOUTH,  
RANGE 41 EAST, VILLAGE OF ROYAL PALM BEACH, PALM BEACH COUNTY, FLORIDA.

JANUARY 20 12

THIS INSTRUMENT WAS PREPARED BY:  
MARK R. MINTER, P.S.M. #5785 OF  
**Craven Thompson & Associates, Inc.**  
ENGINEERS • PLANNERS • SURVEYORS  
3563 N.W. 53RD STREET FORT LAUDERDALE, FLORIDA 33309  
TEL: (954) 739-8400 FAX: (954) 739-8405  
JUNE 2011 06-0053

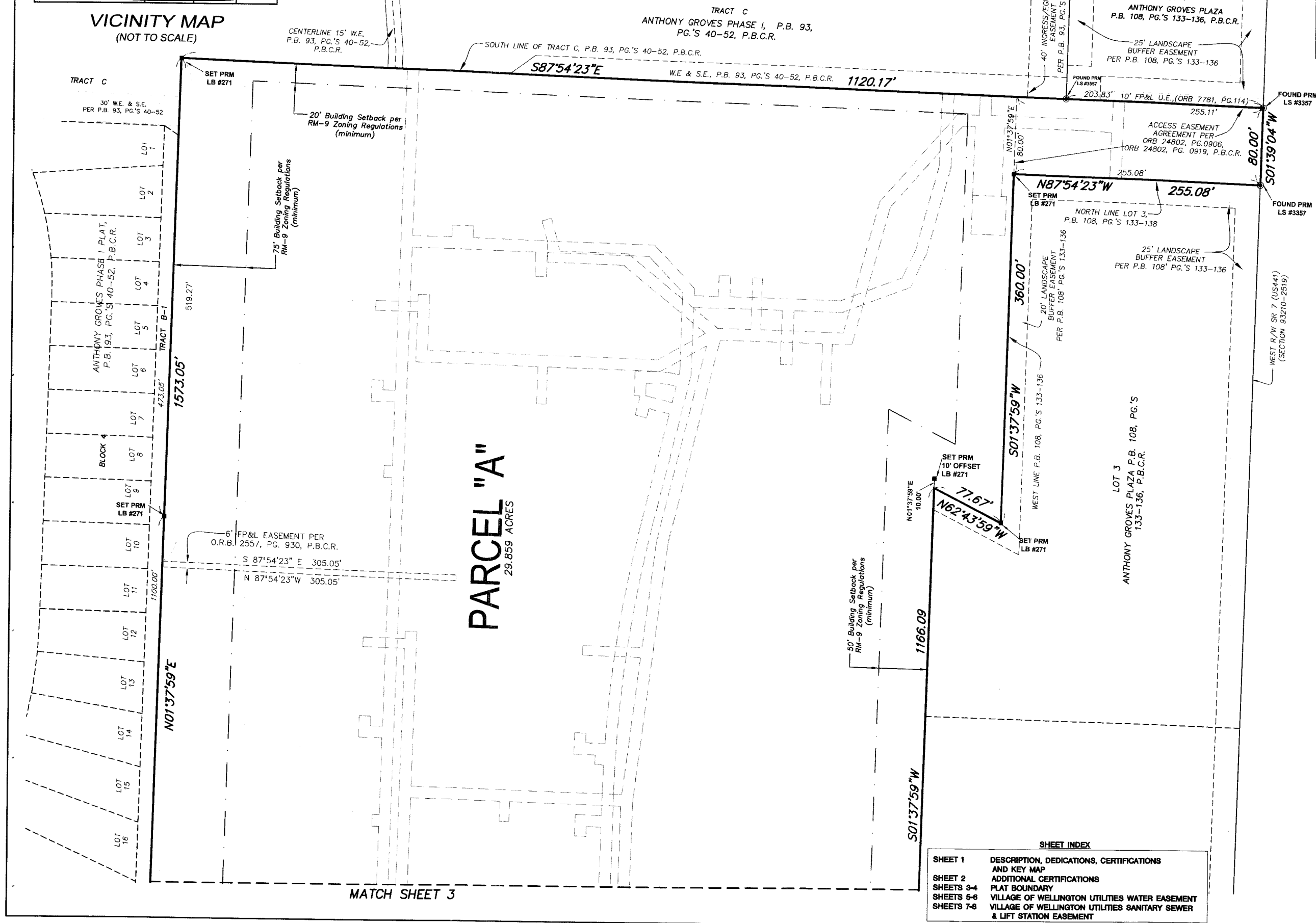


VICINITY MAP  
(NOT TO SCALE)



STATE OF FLORIDA  
COUNTY OF PALM BEACH  
THIS PLAT WAS FILED FOR RECORD AT  
THIS \_\_\_\_\_ DAY OF \_\_\_\_\_, 20\_\_\_\_  
AND DULY RECORDED IN PLAT BOOK NO. \_\_\_\_\_  
SHARON R. BOCK,  
CLERK & COMPTROLLER  
BY \_\_\_\_\_ DEPUTY CLERK

SHEET 4 OF 8 SHEETS



SHEET INDEX

SHEET 1	DESCRIPTION, DEDICATIONS, CERTIFICATIONS AND KEY MAP
SHEET 2	ADDITIONAL CERTIFICATIONS
SHEETS 3-4	PLAT BOUNDARY
SHEETS 5-6	VILLAGE OF WELLINGTON UTILITIES WATER EASEMENT
SHEETS 7-8	VILLAGE OF WELLINGTON UTILITIES SANITARY SEWER & LIFT STATION EASEMENT

STATE ROAD 7 (US 441)  
(PUBLIC/DEDICATED)

MATCH SHEET 3