

VICINITY MAP
(NOT TO SCALE)

ARCHSTONE-FUTURA ENCLAVE

BEING A PARCEL OF LAND LYING IN THE EAST (1/2) OF SECTION 1, TOWNSHIP 44 SOUTH,
RANGE 41 EAST, VILLAGE OF ROYAL PALM BEACH, PALM BEACH COUNTY, FLORIDA.

JANUARY 2012

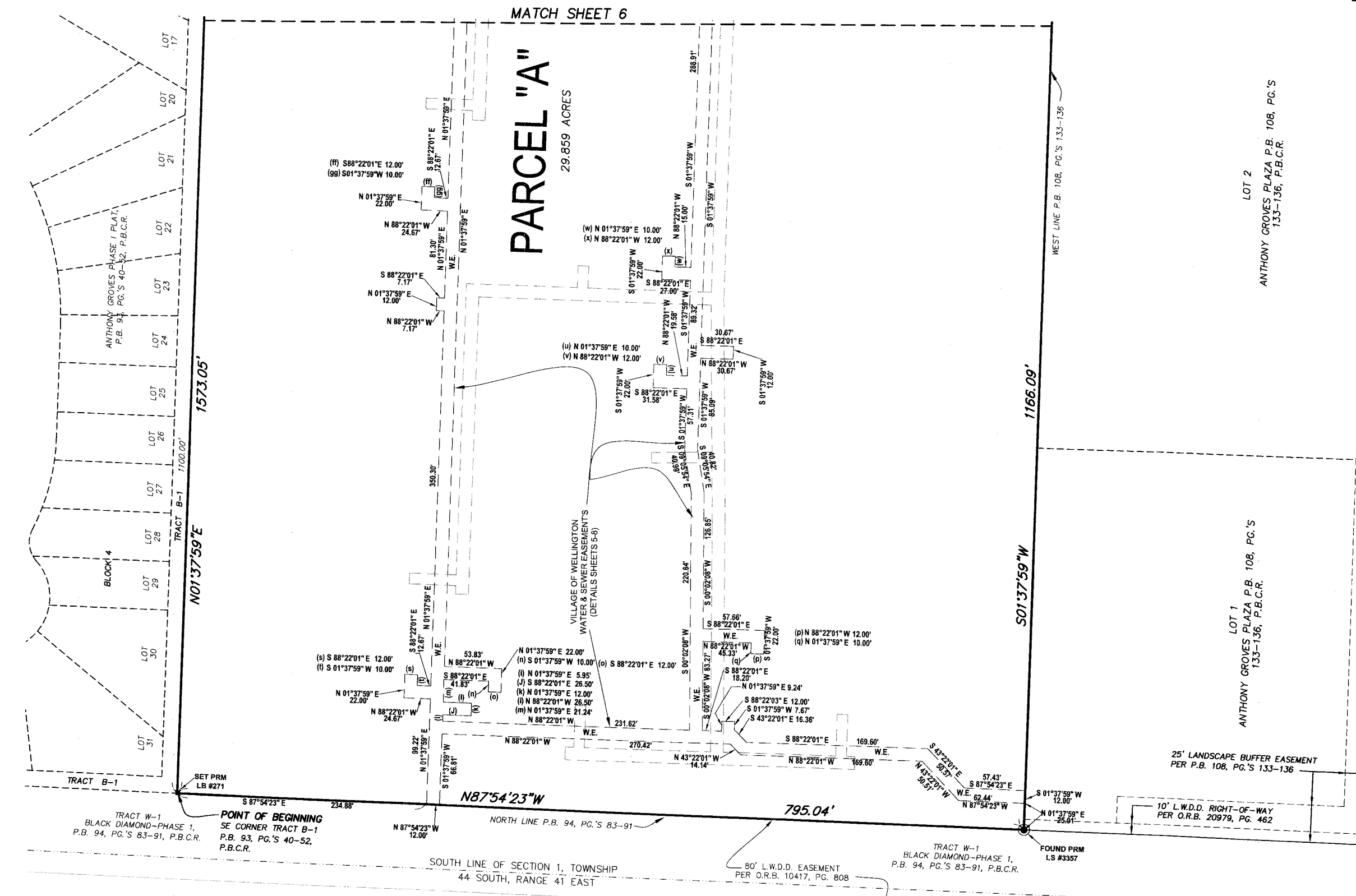
SHEET INDEX

SHEET 1	DESCRIPTION, DEDICATIONS, CERTIFICATIONS AND KEY MAP
SHEET 2	ADDITIONAL CERTIFICATIONS
SHEETS 3-4	PLAT BOUNDARY
SHEETS 5-6	VILLAGE OF WELLINGTON UTILITIES WATER EASEMENT
SHEETS 7-8	VILLAGE OF WELLINGTON UTILITIES SANITARY SEWER & LIFT STATION EASEMENT

THIS INSTRUMENT WAS PREPARED BY:
MARK R. MINTER, P.S.M. #5785 OF
GRAVEN THOMPSON & ASSOCIATES, INC.
ENGINEERS • PLANNERS • SURVEYORS
3563 N.W. 53RD STREET FORT LAUDERDALE, FLORIDA 33309
TEL: (954) 739-6400 FAX: (954) 739-8409
JUNE 2011 06-0053

STATE OF FLORIDA
COUNTY OF PALM BEACH
THIS PLAT WAS FILED FOR RECORD AT
THIS _____ DAY OF _____, 20____
AND DULY RECORDED IN PLAT BOOK NO. _____
SHARON R. BOCK,
CLERK & COMPTROLLER
BY _____ DEPUTY CLERK

SHEET 5 OF 8 SHEETS



WEST R/W SR 7 (US 441)
(SECTION 93210-2519)

STATE ROAD 7 (US 441)
(PUBLIC, DEDICATED)

S.E. CC
SECTION 1, TOWN:
RANGE 41 EAST

123