

"NORTHBORO ELEMENTARY SCHOOL"

BEING A REPLAT OF
 BLOCKS 1 AND 2 AND THE ABANDONED 25 FOOT EXTENSION OF CALVIN AVENUE ROAD RIGHT OF WAY AND
 THE 14 FOOT ALLEY AND A PORTION OF 39TH STREET FORMERLY THIRTY-SEVENTH (37TH) AVENUE ROAD
 RIGHT OF WAY, NORTHWOOD ADDITION TO WEST PALM BEACH PLAT NO. 6 (PLAT BOOK 11, PAGE 18), AND
 BLOCK 2 AND THE 14 FOOT ALLEY ADJOINING BLOCK 2, AND A TRIANGULAR PORTION OF 38TH STREET
 FORMERLY 36TH AVENUE ADJOINING LOT 10, NORTHWOOD ADDITION TO WEST PALM BEACH PLAT NO. 3 (PLAT
 BOOK 9, PAGE 30) AND A PORTION OF THE SCHOOL HOUSE LOT, LOTS 2,4,6,8, AND 10, GALE LAKE WORTH PLAT
 NO. 1 (PLAT BOOK 3, PAGE 9); ALL LYING WITHIN SECTION 9, TOWNSHIP 43 SOUTH, RANGE 43 EAST,
 CITY OF WEST PALM BEACH, PALM BEACH COUNTY, FLORIDA

THIS INSTRUMENT WAS PREPARED BY:
 DANIEL C. LAAK
 IN THE OFFICE OF:
 HELLER-WEAVER AND SHEREMETA, INC.
 ENGINEERS ... SURVEYORS and MAPPERS
 310 SOUTHEAST FIRST STREET, SUITE 5
 DELRAY BEACH, FLORIDA 33483
 (561) 243-8700

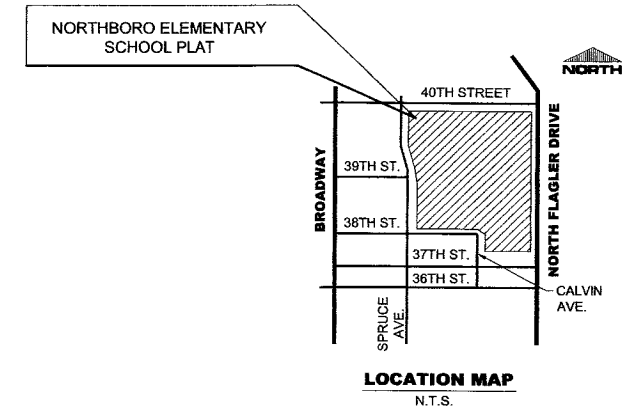
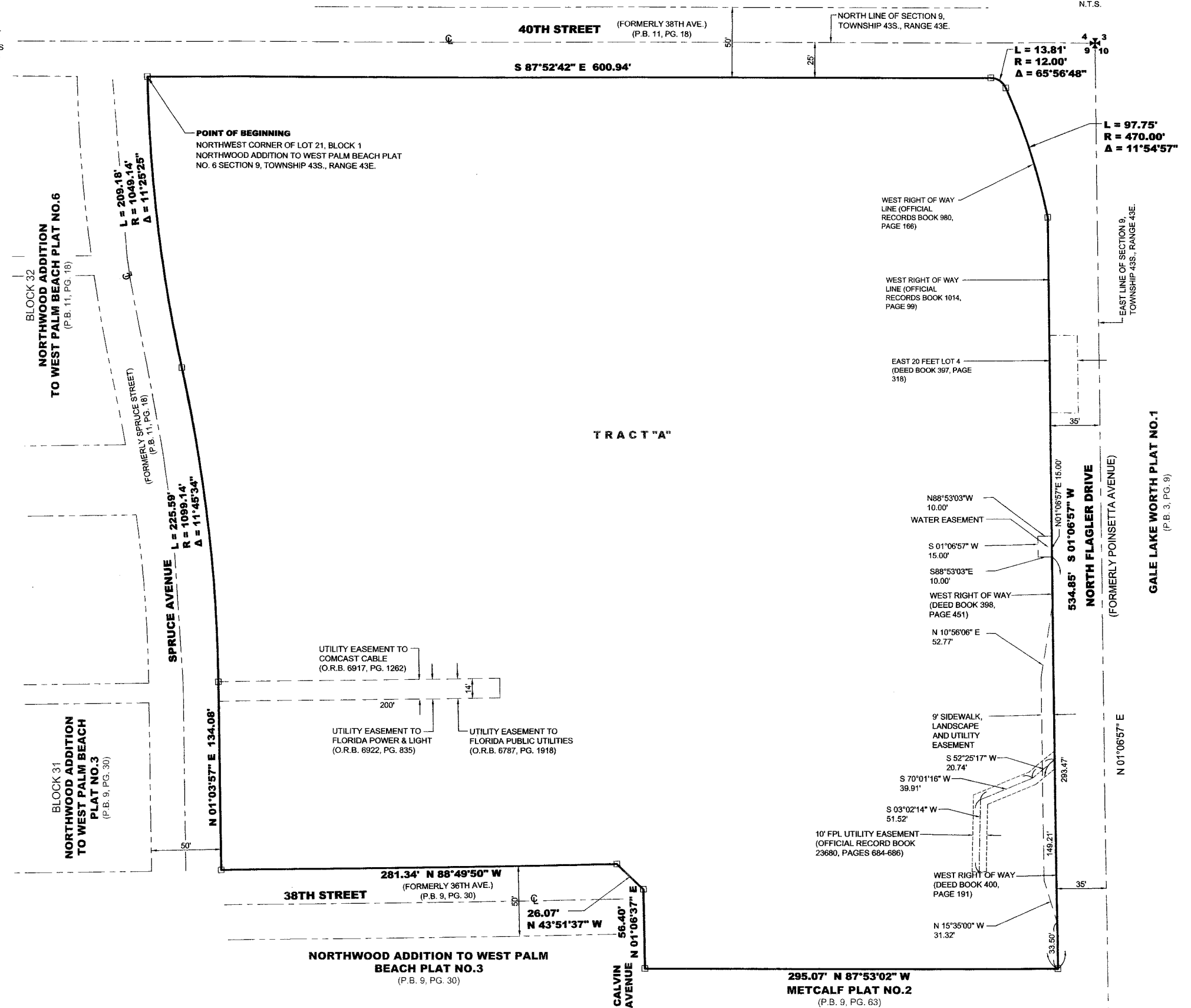


40 20 0 20 40
 1 inch = 40ft.

SCALE: 1 INCH = 40 FEET

LEGEND:

- P.B. PLAT BOOK
- O.R.B. OFFICIAL RECORDS BOOK
- PG. PAGE(S)
- P.R.M. PERMANENT REFERENCE MONUMENT
- P.C.P. PERMANENT CONTROL POINT
- ⊙ CENTERLINE
- INDICATES "SET PERMANENT REFERENCE MONUMENT"
- P.S.M. #5118
- R RADIUS
- Δ DELTA (CENTRAL ANGLE)
- L ARC LENGTH
- N.T.S. NOT TO SCALE



134

COUNTY OF PALM BEACH
 STATE OF FLORIDA

THIS PLAT WAS FILED FOR
 RECORD AT _____ DAY OF _____
 2012, AND DULY RECORDED
 IN PLAT BOOK NO. _____
 ON PAGE _____
 SHARON R. BOCK, CLERK OF
 CIRCUIT COURT AND COMPTROLLER
 BY _____ D.C.

SHEET 2 OF 2 SHEETS