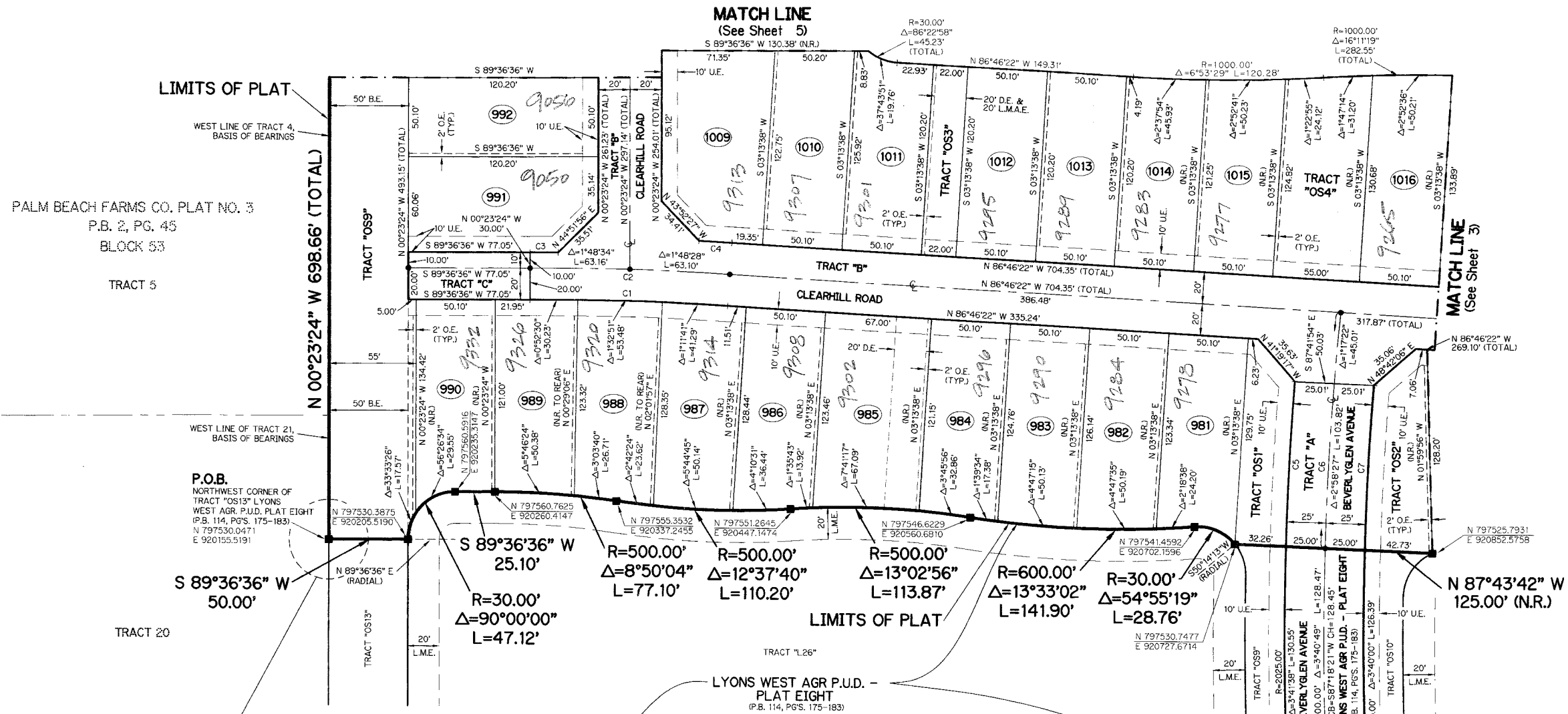
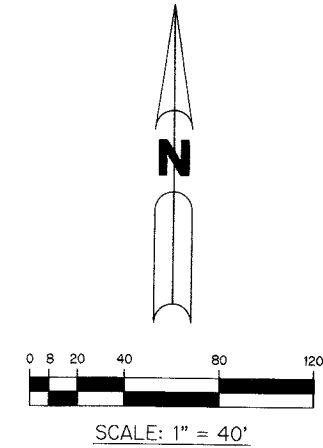


LYONS WEST AGR P.U.D. - PLAT TEN

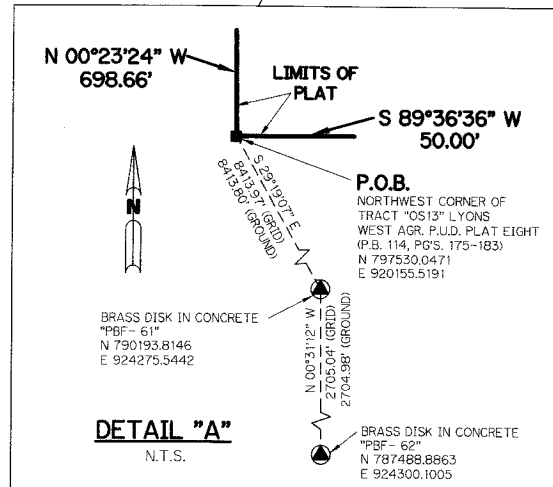
BEING A REPLAT OF A PORTION OF TRACTS 1 THROUGH 4 AND TRACTS 21 THROUGH 24, ALL LYING WITHIN BLOCK 53, PALM BEACH FARMS COMPANY PLAT NO. 3, AS RECORDED IN PLAT BOOK 2, PAGES 45 THROUGH 54, OF THE PUBLIC RECORDS OF PALM BEACH COUNTY, FLORIDA LYING IN SECTION 30, TOWNSHIP 45 SOUTH, RANGE 42 EAST

SHEET 2 OF 5 APRIL, 2012

THIS INSTRUMENT PREPARED BY
PERRY C. WHITE, P.S.M. 4213, STATE OF FLORIDA
SAND & HILLS SURVEYING, INC.
8461 LAKE WORTH ROAD, SUITE 410
LAKE WORTH, FLORIDA 33467
LB-7741



- LEGEND:**
- SET PERMANENT REFERENCE MONUMENT, L.B. #7741
 - FOUND PERMANENT REFERENCE MONUMENT, L.B. #7741
 - SET PERMANENT CONTROL POINT, L.B. #7741
 - FOUND PERMANENT CONTROL POINT, L.B. #7741
 - Δ DELTA ANGLE
 - BE BUFFER EASEMENT
 - CB CHORD BEARING
 - CH CHORD DISTANCE
 - C CENTERLINE
 - D.B. DEED BOOK
 - DE DRAINAGE EASEMENT
 - F.P.L. FLORIDA POWER & LIGHT
 - GE GRADING EASEMENT
 - L ARC LENGTH
 - L.A.E. LIMITED ACCESS EASEMENT
 - L.M.A.E. LAKE MAINTENANCE ACCESS EASEMENT
 - L.M.E. LAKE MAINTENANCE EASEMENT
 - L.W.D.D. LAKE WORTH DRAINAGE DISTRICT
 - NR. NOT RADIAL
 - N.T.S. NOT TO SCALE
 - O.F.B. OFFICIAL RECORD BOOK
 - O.E. OVERLAPPING EASEMENT
 - P.B.C.U.E. PALM BEACH COUNTY UTILITY EASEMENT
 - P.B. PLAT BOOK
 - P.C.P. PERMANENT CONTROL POINT
 - P.G.S. PAGES
 - P.O.B. POINT OF BEGINNING
 - P.O.C. POINT OF COMMENCEMENT
 - P.S.M. PROFESSIONAL SURVEYOR AND MAPPER
 - R RADIUS
 - R/W RIGHT-OF-WAY
 - R.D. & D. ROAD, DYKE AND DITCH RESERVATION
 - S.T. SURVEY TIE
 - U.E. UTILITY EASEMENT
- N 1000000.0000 - DENOTES STATE PLANE COORDINATES
E 1000000.0000



CURVE TABLE

CURVE	RADIUS	DELTA	LENGTH	CHORD BEARING	CHORD DISTANCE
C1	1980.00'	3°37'02"	125.00'	N 88°34'53" W	124.98'
C2	2000.00'	3°37'02"	126.26'	N 88°34'53" W	126.24'
C3	2010.00'	0°30'40"	17.93'	N 89°51'56" E	17.93'
C4	2020.00'	0°35'08"	20.65'	N 87°03'56" W	20.65'
C5	2025.00'	2°56'17"	103.84'	N 87°03'40" E	103.82'
C6	2000.00'	4°15'49"	148.83'	N 03°18'37" E	148.80'
C7	1975.00'	3°00'42"	103.81'	N 02°40'14" E	103.80'

NOTE:
COORDINATES SHOWN ON THE GEODETIC CONTROL MEET OR EXCEED THE LOCAL ACCURACY REQUIREMENTS OF A 2 CENTIMETER GEODETIC CONTROL SURVEY. COORDINATES SHOWN ARE GRID COORDINATES DATUM = NAD 83 (1990 ADJUSTMENT) AS READJUSTED BY PALM BEACH COUNTY IN 1998.
ZONE = FLORIDA EAST ZONE
LINEAR UNIT = U.S. SURVEY FEET
COORDINATE SYSTEM = 1983 STATE PLANE TRANSVERSE MERCATOR PROJECTION
ALL DISTANCES ARE GROUND
SCALE FACTOR = 1.0000207
PLAT BEARING = GRID BEARING

