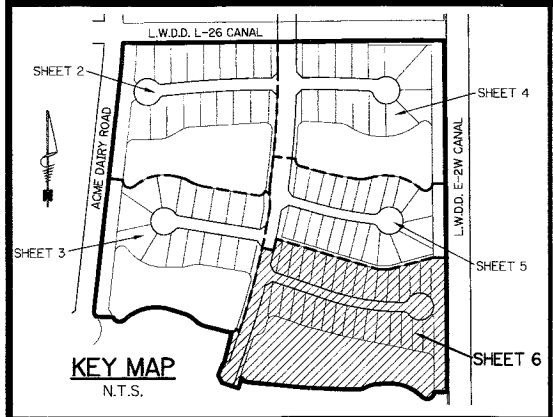


# TRAILS AT CANYON - PLAT FIVE

(A.K.A. ACME EAST AGR P.U.D.)

BEING A REPLAT OF A PORTION OF TRACTS 2 THROUGH 6, 27 THROUGH 29 AND TRACTS 34 THROUGH 36, ALL OF TRACTS 30 AND 31 AND A PORTION OF A ROAD, DYKE AND DITCH RESERVATION, 30.00 FEET IN WIDTH, ALL LYING WITHIN BLOCK 59, PALM BEACH FARMS COMPANY PLAT NO. 3, ACCORDING TO THE PLAT THEREOF, AS RECORDED IN PLAT BOOK 2, PAGES 45 THROUGH 54, OF THE PUBLIC RECORDS, PALM BEACH COUNTY, LYING IN SECTION 32, TOWNSHIP 45 SOUTH, RANGE 42 EAST

SHEET 6 OF 6 MAY, 2012



- LEGEND:**
- - SET PERMANENT REFERENCE MONUMENT 4"x4" CONCRETE MONUMENT WITH 1.5" DISK STAMPED L.B. #7741
  - - FOUND PERMANENT REFERENCE MONUMENT 4"x4" CONCRETE MONUMENT WITH 1.5" DISK STAMPED L.B. #7741
  - - SET PERMANENT CONTROL POINT NAIL WITH 1.25" DISK STAMPED L.B. #7741
  - - FOUND PERMANENT CONTROL POINT NAIL WITH 1.25" DISK STAMPED L.B. #7741
  - △ - DELTA ANGLE
  - B.E. - BUFFER EASEMENT
  - CB - CHORD BEARING
  - CD - CHORD DISTANCE
  - C.L. - CENTERLINE
  - D.B. - DEED BOOK
  - D.E. - DRAINAGE EASEMENT
  - F.P.E. - FLORIDA POWER & LIGHT
  - G. - GRADING EASEMENT
  - L. - ARC LENGTH
  - L.A.E. - LIMITED ACCESS EASEMENT
  - L.M.A.E. - LAKE MAINTENANCE ACCESS EASEMENT
  - L.M.E. - LAKE MAINTENANCE EASEMENT
  - L.W.D.D. - LAKE WORTH DRAINAGE DISTRICT
  - N.R. - NOT RADIAL
  - N.T.S. - NOT TO SCALE
  - O.R.B. - OFFICIAL RECORD BOOK
  - O.E. - OVERHANG EASEMENT
  - P.B.C.U.E. - PALM BEACH COUNTY UTILITY EASEMENT
  - P.B. - PLAT BOOK
  - P.C.P. - PERMANENT CONTROL POINT
  - P.S. - PAGES
  - P.O.B. - POINT OF BEGINNING
  - P.O.C. - POINT OF COMMENCEMENT
  - P.S.M. - PROFESSIONAL SURVEYOR AND MAPPER
  - R. - RADIUS
  - R/W - RIGHT-OF-WAY
  - R.D. & D. - ROAD, DYKE AND DITCH RESERVATION
  - S.T. - SURVEY TIE
  - U.E. - UTILITY EASEMENT
  - N 100000.0000  
E 100000.0000 - DENOTES STATE PLANE COORDINATES

PALM BEACH FARMS CO. PLAT NO. 3  
P.B. 2, PG. 45 - 54  
BLOCK 59

LIMITS OF PLAT

N 14°17'31" E  
137.25'

N 61°31'48" E  
5.46'

N 23°11'26" E  
50.61'

N 28°28'12" W  
36.71'

N 71°13'55" W  
74.42'

N 71°13'55" W  
74.42'

N 17°00'31" W  
46.24'

N 84°12'50" W  
253.30'

N 87°44'42" W  
207.64'

S 87°07'11" W  
49.00'

R=100.00'  
Δ=30°16'36"  
L=52.84'

R=186.00'  
Δ=48°59'43"  
L=159.05'

R=30.00'  
Δ=136°33'22"  
L=71.50'

S 00°26'28" E  
1494.36'

S 89°33'32" W  
55.00'

S 89°33'32" W  
55.00'

S 00°26'28" E  
1494.36' (TOTAL)

LIMITS OF PLAT

L.W.D.D. E-2W CANAL

SUNSHINE STATE PARKWAY

FLORIDA STATE TURNPIKE AUTHORITY  
(MIAMI TO FT. PIERCE SECTION)

OWNER: FLORIDA STATE TURNPIKE AUTHORITY  
EMINENT DOMAIN, LAW NO. 15-304  
VS GO SOUTH, INC. - PARCEL NO. 39  
ORDER OF TAKING, SEPTEMBER 9, 1955  
MINUTES CIRCUIT COURT BOOK 67, PAGE 482

SET WITNESS CORNER  
25.00' WEST OF CORNER

7.57' CALC. FROM R/W TO PARCEL BOUNDARY

BRASS DISK IN CONCRETE "RAIL"  
N 792846.3350  
E 929600.1800

BRASS DISK IN CONCRETE "GOAT"  
N 792999.1740  
E 932225.1420

N 87°32'19" E  
3394.32' (GRID)  
3394.24' (GROUND)

N 791359.6656  
E 926548.7536

N 791359.6656  
E 926548.7536

N 791359.6656  
E 926548.7536

N 791359.6656  
E 926548.7536

N 791359.6656  
E 926548.7536

N 791359.6656  
E 926548.7536

N 791359.6656  
E 926548.7536

N 791359.6656  
E 926548.7536

N 791359.6656  
E 926548.7536

N 791359.6656  
E 926548.7536

N 791359.6656  
E 926548.7536

N 791359.6656  
E 926548.7536

N 791359.6656  
E 926548.7536

N 791359.6656  
E 926548.7536

N 791359.6656  
E 926548.7536

N 791359.6656  
E 926548.7536

N 791359.6656  
E 926548.7536

N 791359.6656  
E 926548.7536

N 791359.6656  
E 926548.7536

N 791359.6656  
E 926548.7536

N 791359.6656  
E 926548.7536

N 791359.6656  
E 926548.7536

N 791359.6656  
E 926548.7536

N 791359.6656  
E 926548.7536

N 791359.6656  
E 926548.7536

N 791359.6656  
E 926548.7536

N 791359.6656  
E 926548.7536

N 791359.6656  
E 926548.7536

N 791359.6656  
E 926548.7536

N 791359.6656  
E 926548.7536

N 791359.6656  
E 926548.7536

N 791359.6656  
E 926548.7536

N 791359.6656  
E 926548.7536

N 791359.6656  
E 926548.7536

N 791359.6656  
E 926548.7536

N 791359.6656  
E 926548.7536

N 791359.6656  
E 926548.7536

N 791359.6656  
E 926548.7536

N 791359.6656  
E 926548.7536

N 791359.6656  
E 926548.7536

N 791359.6656  
E 926548.7536

N 791359.6656  
E 926548.7536

N 791359.6656  
E 926548.7536

N 791359.6656  
E 926548.7536

N 791359.6656  
E 926548.7536

N 791359.6656  
E 926548.7536

N 791359.6656  
E 926548.7536

N 791359.6656  
E 926548.7536

N 791359.6656  
E 926548.7536

N 791359.6656  
E 926548.7536

N 791359.6656  
E 926548.7536

N 791359.6656  
E 926548.7536

N 791359.6656  
E 926548.7536

N 791359.6656  
E 926548.7536

N 791359.6656  
E 926548.7536

N 791359.6656  
E 926548.7536

N 791359.6656  
E 926548.7536

N 791359.6656  
E 926548.7536

N 791359.6656  
E 926548.7536

N 791359.6656  
E 926548.7536

N 791359.6656  
E 926548.7536

N 791359.6656  
E 926548.7536

N 791359.6656  
E 926548.7536

N 791359.6656  
E 926548.7536

N 791359.6656  
E 926548.7536

N 791359.6656  
E 926548.7536

N 791359.6656  
E 926548.7536

N 791359.6656  
E 926548.7536

N 791359.6656  
E 926548.7536

N 791359.6656  
E 926548.7536

N 791359.6656  
E 926548.7536

N 791359.6656  
E 926548.7536

N 791359.6656  
E 926548.7536

N 791359.6656  
E 926548.7536

N 791359.6656  
E 926548.7536

N 791359.6656  
E 926548.7536

N 791359.6656  
E 926548.7536

N 791359.6656  
E 926548.7536

N 791359.6656  
E 926548.7536

N 791359.6656  
E 926548.7536

N 791359.6656  
E 926548.7536

N 791359.6656  
E 926548.7536

N 791359.6656  
E 926548.7536

N 791359.6656  
E 926548.7536

N 791359.6656  
E 926548.7536

N 791359.6656  
E 926548.7536

N 791359.6656  
E 926548.7536

N 791359.6656  
E 926548.7536

N 791359.6656  
E 926548.7536

N 791359.6656  
E 926548.7536

N 791359.6656  
E 926548.7536

N 791359.6656  
E 926548.7536

N 791359.6656  
E 926548.7536

N 791359.6656  
E 926548.7536

N 791359.6656  
E 926548.7536

N 791359.6656  
E 926548.7536

N 791359.6656  
E 926548.7536

N 791359.6656  
E 926548.7536

N 791359.6656  
E 926548.7536

N 791359.6656  
E 926548.7536

N 791359.6656  
E 926548.7536

N 791359.6656  
E 926548.7536

N 791359.6656  
E 926548.7536

N 791359.6656  
E 926548.7536

N 791359.6656  
E 926548.7536

N 791359.6656  
E 926548.7536

N 791359.6656  
E 926548.7536

N 791359.6656  
E 926548.7536

N 791359.6656  
E 926548.7536

N 791359.6656  
E 926548.7536

N 791359.6656  
E 926548.7536

N 791359.6656  
E 926548.7536

N 791359.6656  
E 926548.7536

N 791359.6656  
E 926548.7536

N 791359.6656  
E 926548.7536

N 791359.6656  
E 926548.7536

N 791359.6656  
E 926548.7536

N 791359.6656  
E 926548.7536

N 791359.6656  
E 926548.7536

N 791359.6656  
E 926548.7536

N 791359.6656  
E 926548.7536

N 791359.6656  
E 926548.7536

N 791359.6656  
E 926548.7536

N 791359.6656  
E 926548.7536

N 791359.6656  
E 926548.7536

N 791359.6656  
E 926548.7536

N 791359.6656  
E 926548.7536

N 791359.6656  
E 926548.7536

N 791359.6656  
E 926548.7536

N 791359.6656  
E 926548.7536

N 791359.6656  
E 926548.7536

N 791359.6656  
E 926548.7536

N 791359.6656  
E 926548.7536

N 791359.6656  
E 926548.7536

N 791359.6656  
E 926548.7536

N 791359.6656  
E 926548.7536

N 791359.6656  
E 926548.7536

N 791359.6656  
E 926548.7536

N 791359.6656  
E 926548.7536

N 791359.6656  
E 926548.7536

N 791359.6656  
E 926548.7536

N 791359.6656  
E 926548.7536

N 791359.6656  
E 926548.7536

N 791359.6656  
E 926548.7536

N 791359.6656  
E 926548.7536

N 791359.6656  
E 926548.7536

N 791359.6656  
E 926548.7536

N 791359.6656  
E 926548.7536

N 791359.6656  
E 926548.7536

N 791359.6656  
E 926548.7536

N 791359.6656  
E 926548.7536