

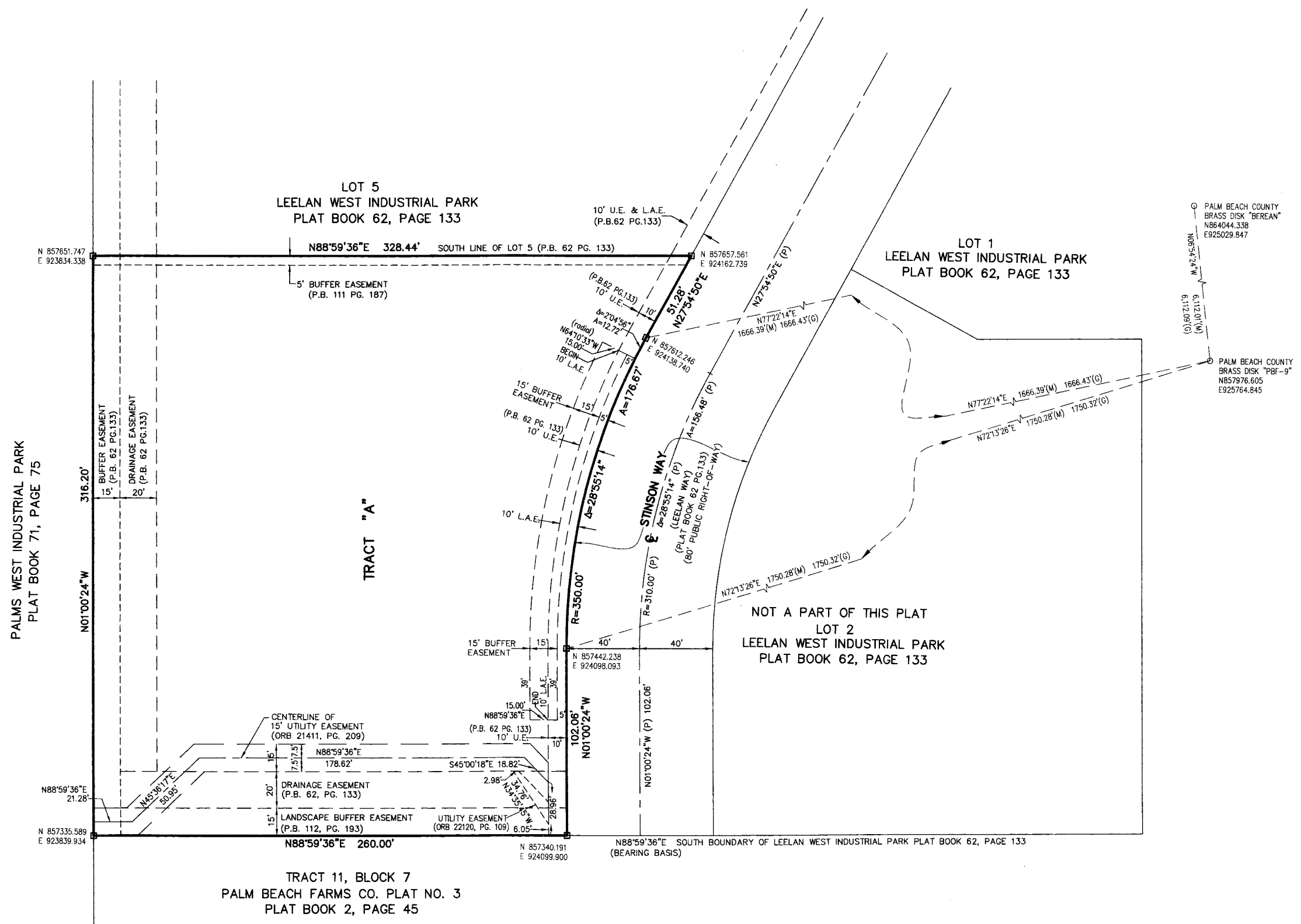
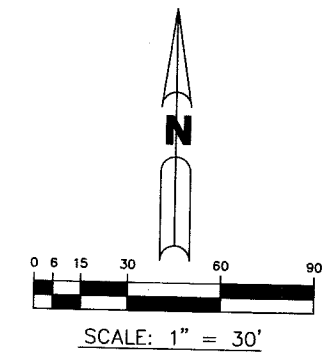
# LEELAN WEST INDUSTRIAL PARK PLAT 1B

A PARCEL OF LAND LYING IN SECTION 32, TOWNSHIP 43 SOUTH, RANGE 42 EAST, PALM BEACH COUNTY, FLORIDA, BEING A REPLAT OF ALL OF LEELAN WEST INDUSTRIAL PARK PLAT 1A, RECORDED IN PLAT BOOK 112, PAGE 193 OF THE PUBLIC RECORDS OF PALM BEACH COUNTY, FLORIDA.

NOVEMBER 2011

SHEET 2 OF 2

152



PALM BEACH COUNTY  
BRASS DISK "BEREAN"  
N864044.338  
E925029.847

PALM BEACH COUNTY  
BRASS DISK "PBF-9"  
N857976.605  
E925764.845

THIS INSTRUMENT WAS PREPARED BY  
JOHN E. PHILLIPS III, P.S.M. 4826

**BROWN & PHILLIPS, INC.**  
CERTIFICATE OF AUTHORIZATION # LB 6473  
1860 OLD OKEECHOBEE RD., SUITE 509  
WEST PALM BEACH, FLORIDA 33409  
561-615-3988, 615-3986 FAX