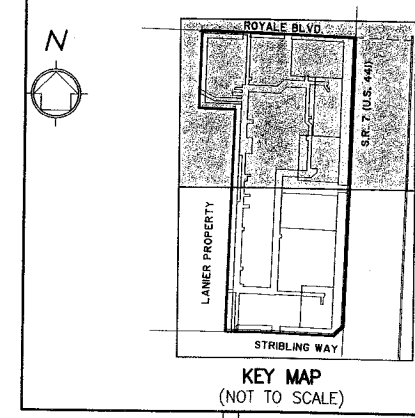


VILLAGE GREEN CENTER

LYING IN SECTION 13, TOWNSHIP 44 SOUTH, RANGE 41 EAST, VILLAGE OF WELLINGTON, PALM BEACH COUNTY, FLORIDA, BEING A REPLAT OF TRACTS "C-1" AND "C-2", LANIER PROPERTY, AS RECORDED IN PLAT BOOK 108, PAGES 75 THROUGH 91, PUBLIC RECORDS OF PALM BEACH COUNTY, FLORIDA.
APRIL 2012



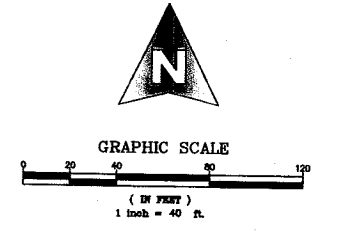
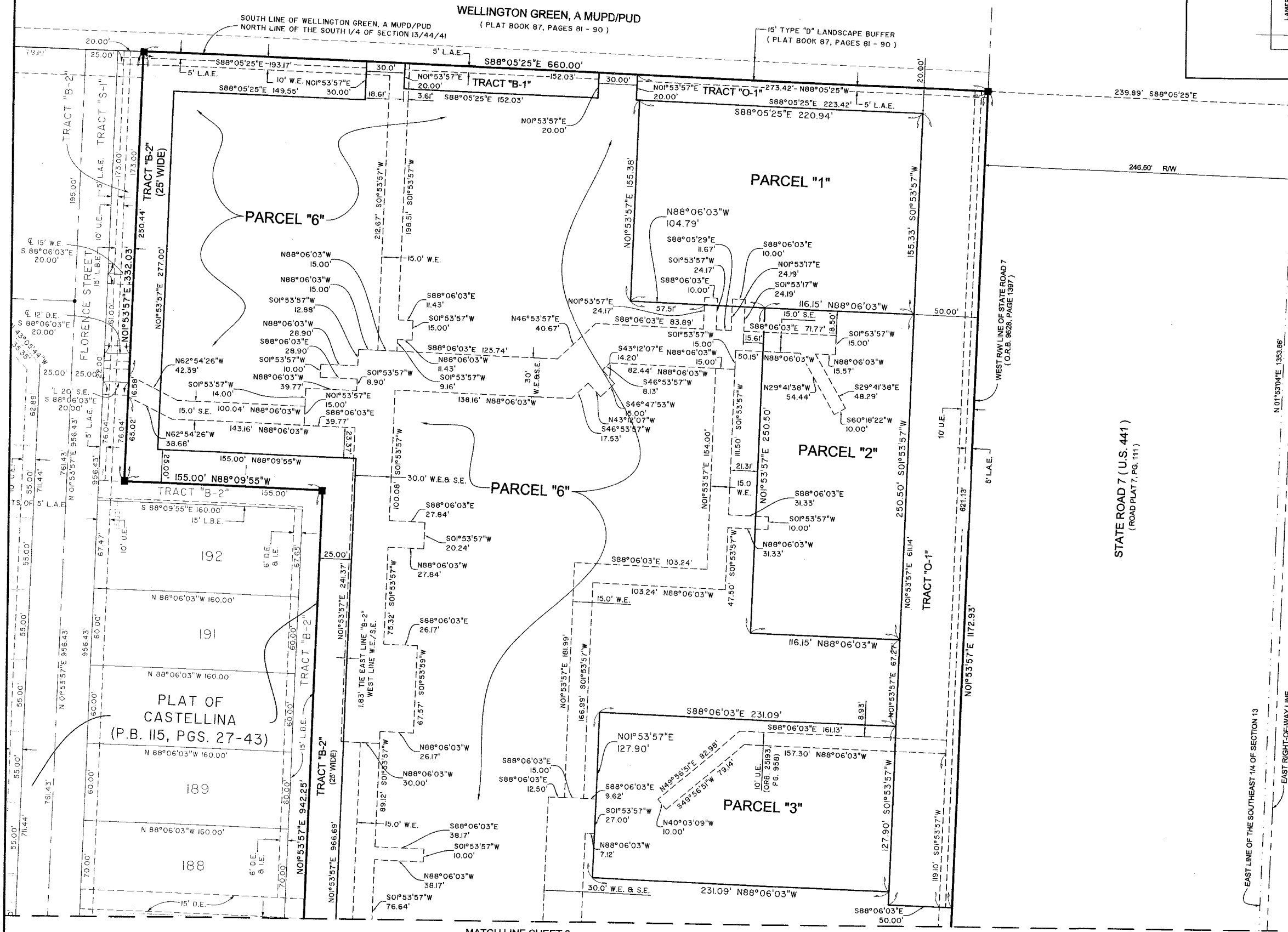
154

COUNTY OF PALM BEACH)
STATE OF FLORIDA) SS

THIS PLAT WAS FILED FOR RECORD AT _____ M. THIS _____ DAY OF _____, 20____ AND DULY RECORDED IN PLAT BOOK NO. _____ ON PAGE _____ THRU _____

SHARON R. BOCK,
CLERK AND COMPTROLLER

BY: _____, D.C.

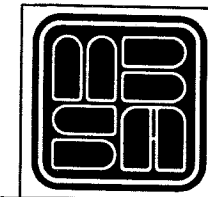


AREA TABULATION

TRACT "O-1"	0.827 ACRES
TRACT "B-1"	0.830 ACRES
TRACT "B-2"	0.070 ACRES
TRACT "B-3"	0.923 ACRES
TRACT "B-4"	0.102 ACRES
PARCEL "1"	0.788 ACRES
PARCEL "2"	0.668 ACRES
PARCEL "3"	0.679 ACRES
PARCEL "4"	1.183 ACRES
PARCEL "5"	0.537 ACRES
PARCEL "6"	9.233 ACRES
TOTAL	15.859 ACRES

MATCH LINE SHEET 3

SHEET 2 OF 3



MICHAEL B. SCHORAH & ASSOCIATES, INC.
1850 FOREST HILL BLVD., SUITE 206
WEST PALM BEACH, FLORIDA 33406
E#B 2438 TEL. (561) 968-0080 FAX. (561) 642-9726 L#B 2438

VILLAGE GREEN CENTER