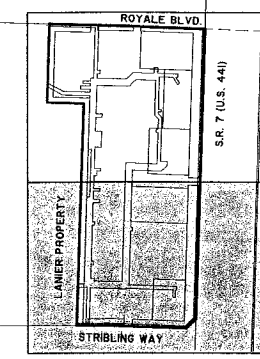


VILLAGE GREEN CENTER

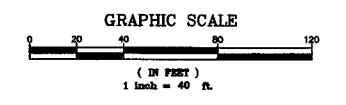
LYING IN SECTION 13, TOWNSHIP 44 SOUTH, RANGE 41 EAST, VILLAGE OF WELLINGTON, PALM BEACH COUNTY, FLORIDA, BEING A REPLAT OF TRACTS "C-1" AND "C-2", LANIER PROPERTY, AS RECORDED IN PLAT BOOK 108, PAGES 75 THROUGH 91, PUBLIC RECORDS OF PALM BEACH COUNTY, FLORIDA.
APRIL 2012



KEY MAP
(NOT TO SCALE)

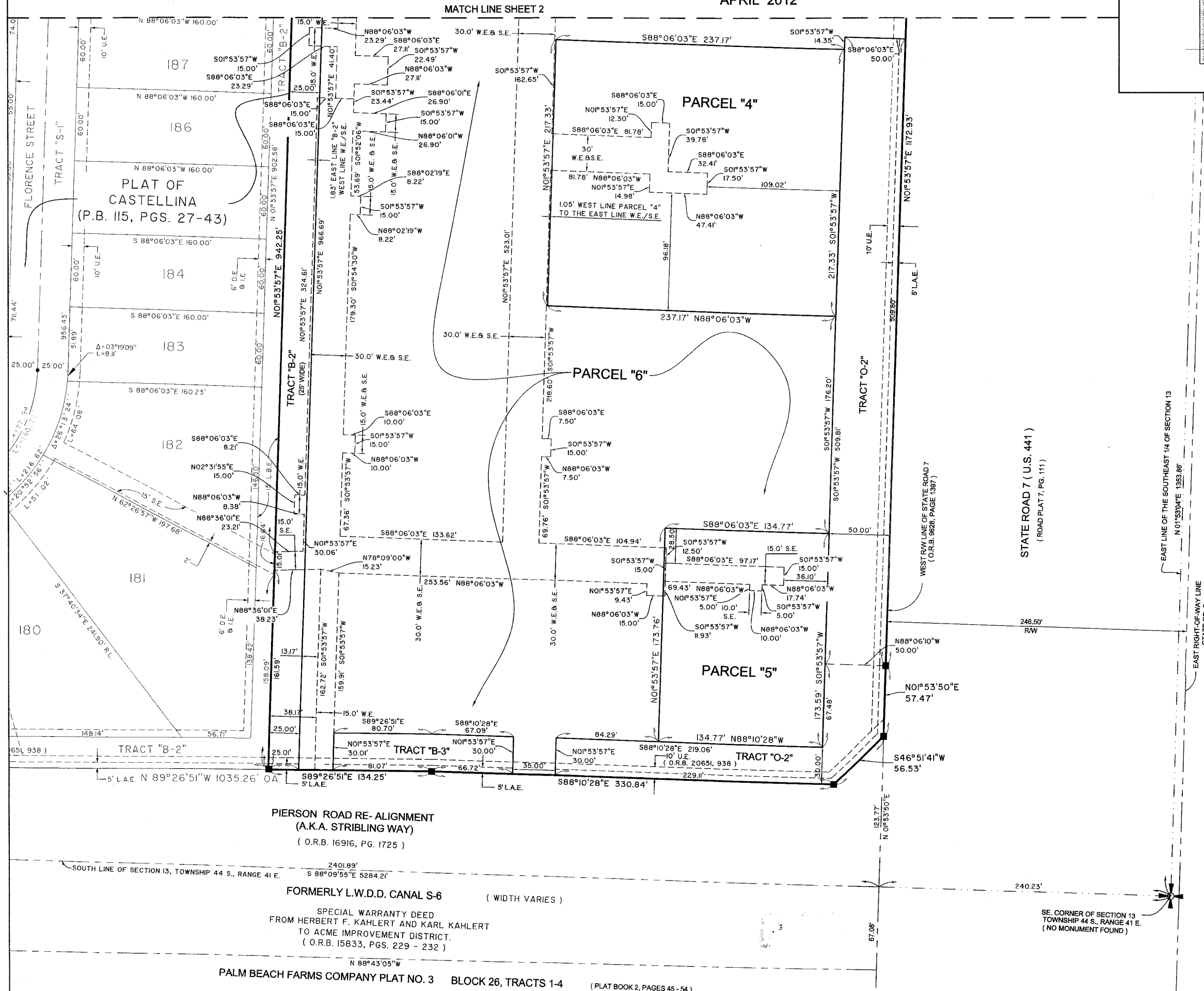
155

COUNTY OF PALM BEACH)
STATE OF FLORIDA) SS
THIS PLAT WAS FILED FOR RECORD AT _____ M. THIS _____ DAY OF _____, 20____ AND DULY RECORDED IN PLAT BOOK NO. _____ ON PAGE _____ THRU _____
SHARON R. BOCK,
CLERK AND COMPTROLLER
BY: _____, D.C.



AREA TABULATION

TRACT "O-1"	0.827 ACRES
TRACT "O-2"	0.830 ACRES
TRACT "B-1"	0.070 ACRES
TRACT "B-2"	0.923 ACRES
TRACT "B-3"	0.102 ACRES
PARCEL "1"	0.788 ACRES
PARCEL "2"	0.868 ACRES
PARCEL "3"	0.679 ACRES
PARCEL "4"	1.183 ACRES
PARCEL "5"	0.537 ACRES
PARCEL "6"	9.293 ACRES
TOTAL	15.899 ACRES

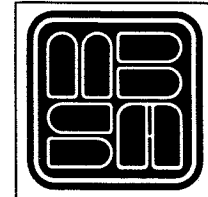


PIERSON ROAD RE-ALIGNMENT
(A.K.A. STRIBLING WAY)
(O.R.B. 16916, PG. 1725)

FORMERLY L.W.D.D. CANAL S-6 (WIDTH VARIES)
SPECIAL WARRANTY DEED
FROM HERBERT F. KAHLERT AND KARL KAHLERT
TO ACME IMPROVEMENT DISTRICT,
(O.R.B. 15833, PGS. 229 - 232)

PALM BEACH FARMS COMPANY PLAT NO. 3 BLOCK 26, TRACTS 1-4 (PLAT BOOK 2, PAGES 45 - 54)

SE CORNER OF SECTION 13
TOWNSHIP 44 S., RANGE 41 E.
(NO MONUMENT FOUND)



MICHAEL B. SCHORAH & ASSOCIATES, INC.
1850 FOREST HILL BLVD., SUITE 206
WEST PALM BEACH, FLORIDA 33406
EB# 2438 TEL. (561) 968-0080 FAX. (561) 642-9726 LB# 2438

VILLAGE GREEN CENTER