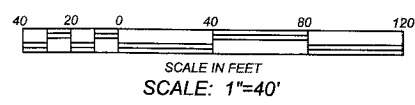
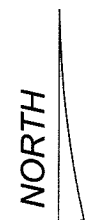


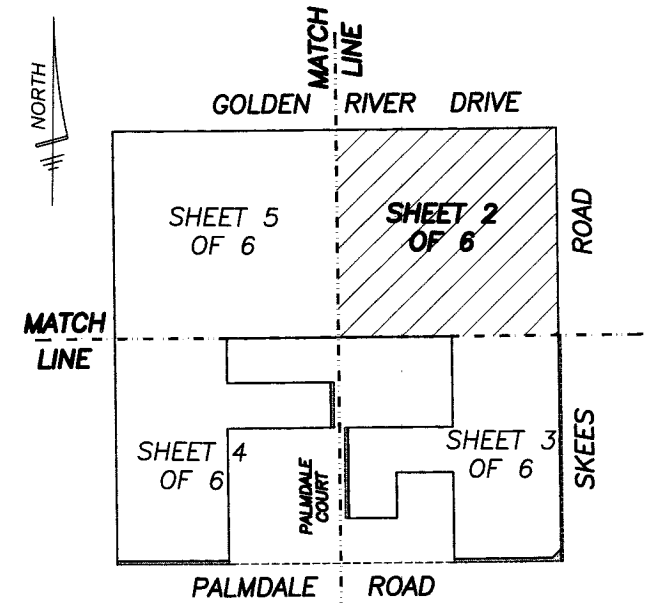
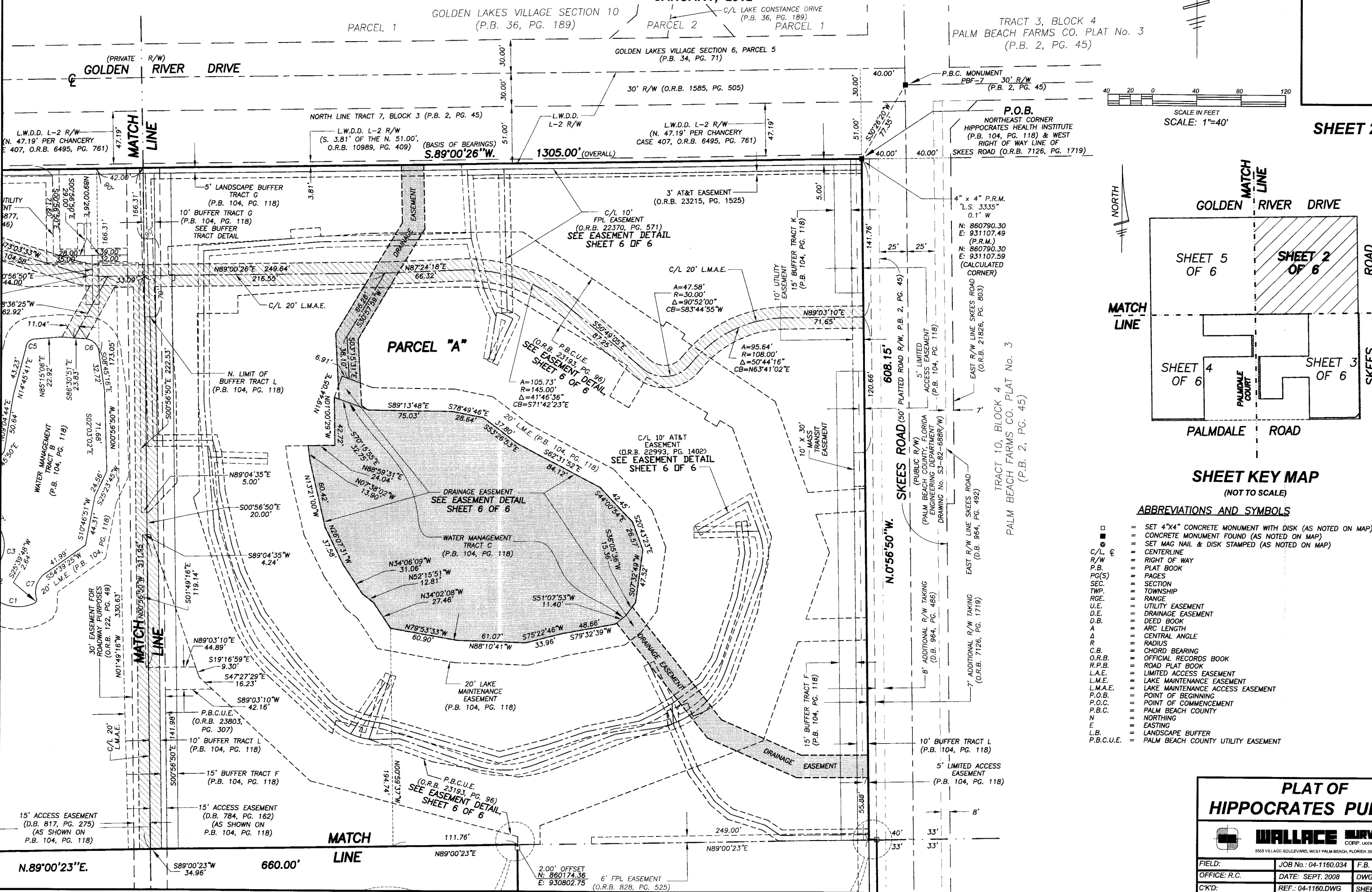
NOTE

IN THOSE CASES WHERE EASEMENTS OF DIFFERENT TYPES CROSS OR OTHERWISE COINCIDE, DRAINAGE EASEMENTS SHALL HAVE FIRST PRIORITY, UTILITY EASEMENTS SHALL HAVE SECOND PRIORITY, ACCESS EASEMENTS SHALL HAVE THIRD PRIORITY, AND ALL OTHER EASEMENTS SHALL BE SUBORDINATE TO THESE WITH THEIR PRIORITIES BEING DETERMINED BY USE RIGHTS GRANTED.

HIPPOCRATES PUD/CLF
BEING A REPLAT OF HIPPOCRATES HEALTH INSTITUTE, ACCORDING TO THE PLAT THEREOF, ON FILE IN THE OFFICE OF THE CLERK OF THE CIRCUIT COURT IN AND FOR PALM BEACH COUNTY, FLORIDA, RECORDED IN PLAT BOOK 104, PAGES 118 AND 119, AND A REPLAT OF A PORTION OF TRACT 7, BLOCK 3, PALM BEACH FARMS COMPANY PLAT NO. 3, ACCORDING TO THE PLAT THEREOF, ON FILE IN THE OFFICE OF THE CLERK OF THE CIRCUIT COURT IN AND FOR PALM BEACH COUNTY, FLORIDA, RECORDED IN PLAT BOOK 2, PAGES 45 TO 54, LYING IN SECTION 28, TOWNSHIP 43 SOUTH, RANGE 42 EAST, PALM BEACH COUNTY, FLORIDA.
JANUARY, 2012



SHEET 2 OF 6



SHEET KEY MAP (NOT TO SCALE)

ABBREVIATIONS AND SYMBOLS

- Legend for symbols and abbreviations:
- Square with dot: SET 4"x4" CONCRETE MONUMENT WITH DISK (AS NOTED ON MAP)
- Square with circle: CONCRETE MONUMENT FOUND (AS NOTED ON MAP)
- Square with cross: SET MAG NAIL & DISK STAMPED (AS NOTED ON MAP)
- Circle with dot: CENTERLINE
- Line with arrows: RIGHT OF WAY
- Line with 'P.B.': PLAT BOOK
- Line with 'PG(S)': PAGES
- Line with 'SEC.': SECTION
- Line with 'TWP.': TOWNSHIP
- Line with 'RGE.': RANGE
- Line with 'U.E.': UTILITY EASEMENT
- Line with 'D.E.': DRAINAGE EASEMENT
- Line with 'D.B.': DEED BOOK
- Line with 'A': ARC LENGTH
- Line with 'Δ': CENTRAL ANGLE
- Line with 'R': RADIUS
- Line with 'C.B.': CHORD BEARING
- Line with 'O.R.B.': OFFICIAL RECORDS BOOK
- Line with 'R.P.B.': ROAD PLAT BOOK
- Line with 'L.A.E.': LIMITED ACCESS EASEMENT
- Line with 'L.M.A.E.': LAKE MAINTENANCE EASEMENT
- Line with 'P.O.B.': POINT OF BEGINNING
- Line with 'P.O.C.': POINT OF COMMENCEMENT
- Line with 'P.B.C.': PALM BEACH COUNTY
- Line with 'N': NORTHING
- Line with 'E': EASTING
- Line with 'L.B.': LANDSCAPE BUFFER
- Line with 'P.B.C.U.E.': PALM BEACH COUNTY UTILITY EASEMENT

PLAT OF HIPPOCRATES PUD/CLF



Table with 3 columns: FIELD, JOB No., F.B. PG., OFFICE: R.C., DATE: SEPT. 2008, DWG. No.: 04-1160-10, CK'D, REF.: 04-1160.DWG, SHEET 2 OF 6