

CENTRAL GARDENS

BEING A PORTION OF SECTIONS 35 AND 36, TOWNSHIP 41 SOUTH,
RANGE 42 EAST, CITY OF PALM BEACH GARDENS,
PALM BEACH COUNTY, FLORIDA.

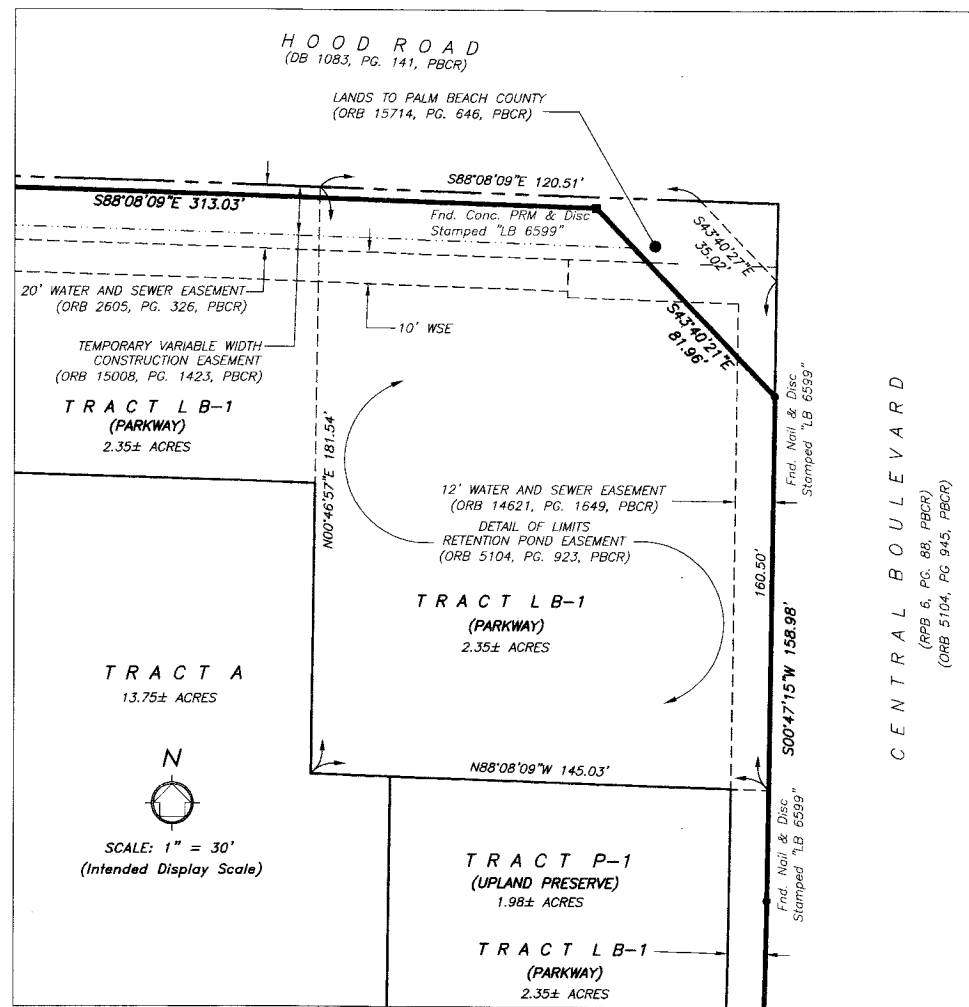
MARCH 2012

194

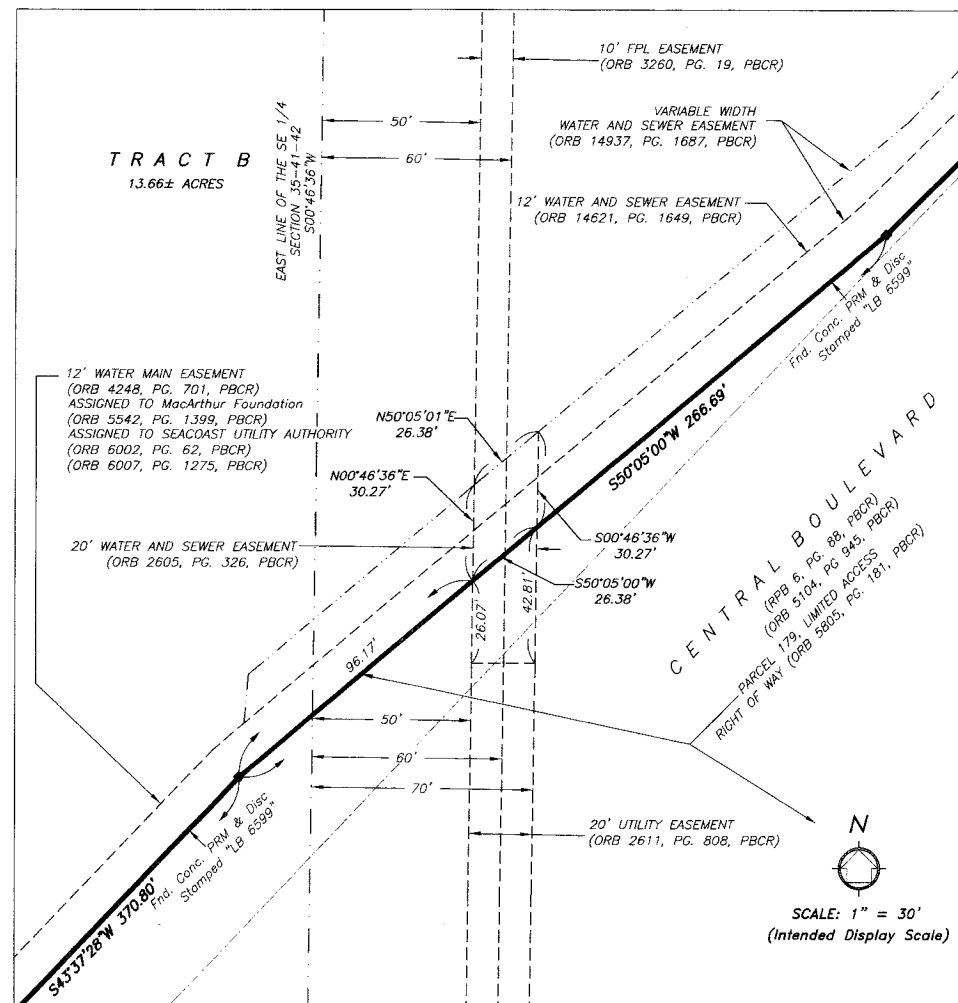
State of Florida }
County of Palm Beach } SS
THIS PLAT WAS FILED FOR
RECORD AT _____ M.
THIS _____ DAY OF _____
A.D. 2012 AND DULY RECORDED
IN PLAT BOOK _____ THROUGH _____
PAGES _____ THROUGH _____
SHARON R. BOCK
CLERK AND COMPTROLLER
BY: _____
DEPUTY CLERK

SHEET 5 OF 6 SHEETS

"DETAIL A"

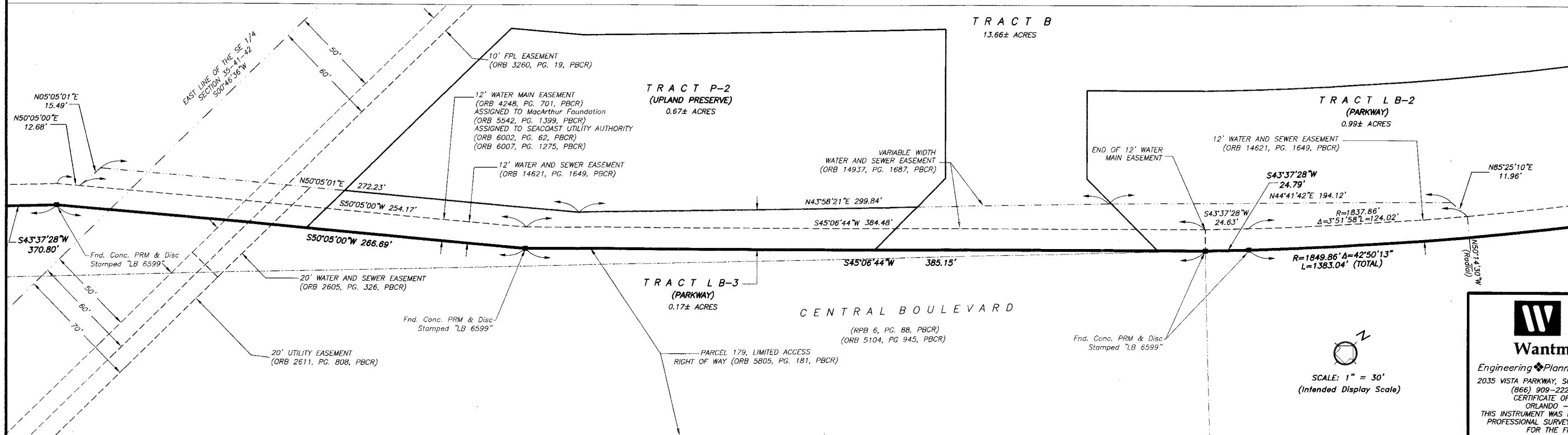


"DETAIL B"



- LEGEND:**
- CL = Center Line
 - Conc. = Concrete
 - DB = Deed Book
 - DE = Drainage Easement
 - Δ = Delta (Central Angle)
 - FDOT = Florida Department of Transportation
 - FPL = Florida Power & Light
 - Fnd. = Found
 - LB = Licensed Surveying Business
 - L = Length of Arc
 - LMAE = Lake Maintenance Access Easement
 - Mon. = Monument
 - ORB = Official Records Book
 - RPB = Road Plat Book
 - Pg. = Page
 - PBCR = Palm Beach County Records
 - PRM = Permanent Reference Monument
 - PB = Plat Book
 - P.U.D. = Planned Unit Development
 - R = Radius
 - R/W = Right-of-Way
 - = Set 5/8" Iron Rod & "LB 7055" Cap except as noted.
 - = Set 4"x4" Conc. PRM & "LB 7055" Aluminum Cap except as noted.
 - ① = Sheet Number
 - UE = Utility Easement
 - WSE = Water and Sewer Easement

"DETAIL C"



WGI
Wantman Group, Inc.
Engineering ♦ Planning ♦ Surveying ♦ Environmental
2035 VISTA PARKWAY, SUITE 100, WEST PALM BEACH, FL 33411
(866) 909-2220 phone (561) 687-1110 fax
CERTIFICATE OF AUTHORIZATION No. LB 7055
ORLANDO - PORT ST. LUCIE - TAMPA
THIS INSTRUMENT WAS PREPARED BY DEREK G. ZEMAN, P.S.M.
PROFESSIONAL SURVEYOR AND MAPPER, LICENSE NO. 5655
FOR THE FIRM: WANTMAN GROUP, INC.

3:\11112509 Central Gardens\dwg\112500_Plat.dwg 5/15/2012