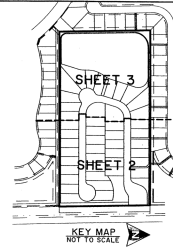


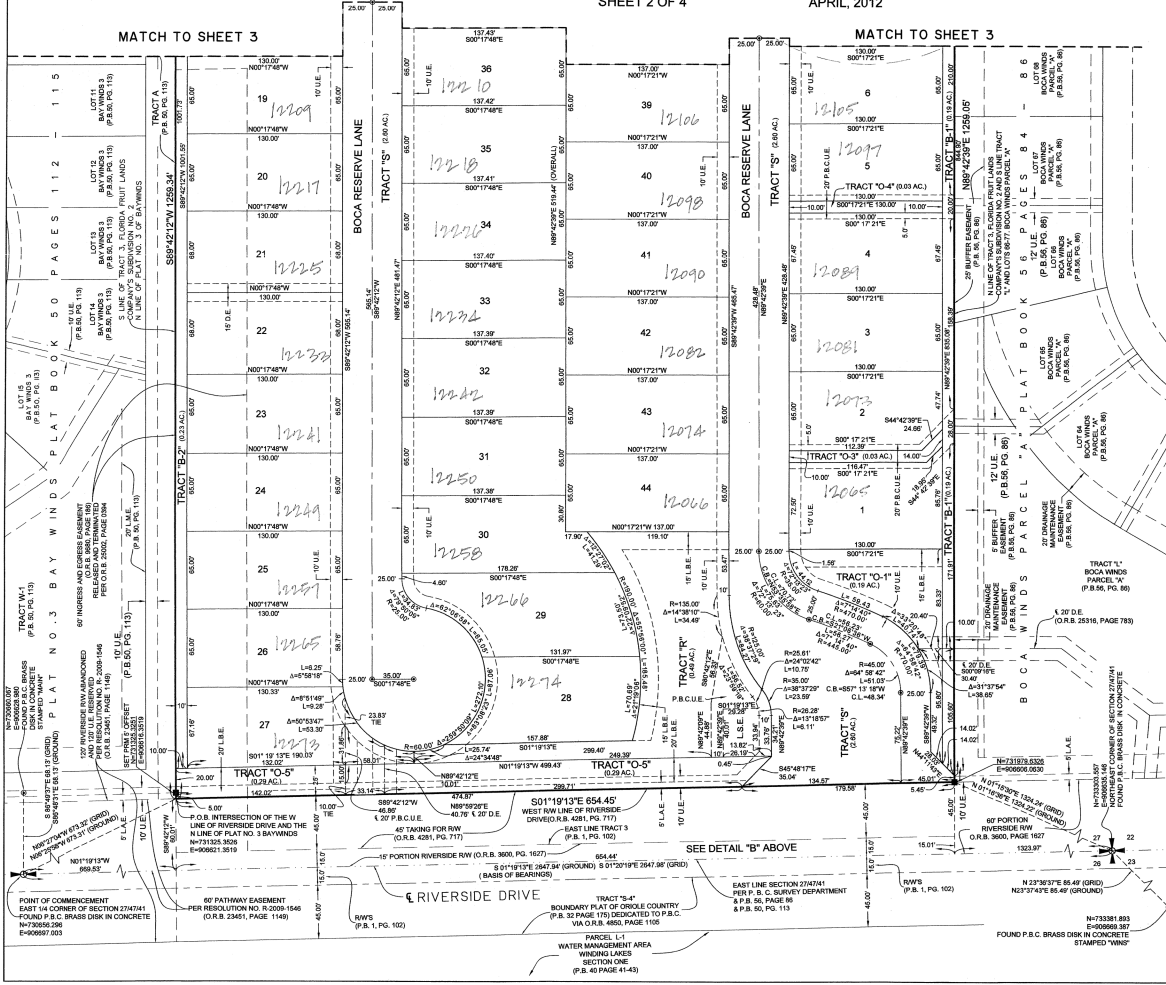
BOCA RESERVE PUD

A PLANNED UNIT DEVELOPMENT
LYING IN SECTION 27, TOWNSHIP 47 SOUTH, RANGE 41 EAST, BEING A REPLAT OF A
PORTION OF TRACT 3, FLORIDA FRUIT LANDS COMPANY'S SUBDIVISION NO. 2 AS RECORDED IN PLAT
BOOK 1, PAGE 102, PUBLIC RECORDS OF PALM BEACH COUNTY, FLORIDA.
SHEET 2 OF 4
APRIL, 2012

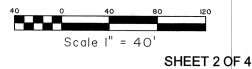


COUNTY OF PALM BEACH
STATE OF FLORIDA
THIS PLAT WAS FILED FOR RECORD AT
... M. THIS ... 2012, AND DAILY
RECORDED IN PLAT BOOK NO. ...
ON PAGE ... THRU ...
SHARON R. BOCK
CLERK AND CONTROLLER
BY: ... D.C.

199



COORDINATE NOTE:
STATE PLANE COORDINATES SHOWN ARE GRID DATUM, NAD 83 1990
ADJUSTMENT, FLORIDA EAST ZONE, COORDINATE SYSTEM 1983 STATE
PLANE, TRANSVERSE MERCHANT PROJECTION
LINEAR UNIT - US SURVEY FEET
ALL DISTANCES ARE GROUND
SCALE FACTOR = 1.000017
GROUND DISTANCE X SCALE FACTOR = GRID DISTANCE
S 81°19'18" E PLAT BEARING, 00°01'00" COUNTER-CLOCKWISE ROTATION
PLAT TO GRID
THE EAST LINE OF SECTION 27, TOWNSHIP 47 SOUTH, RANGE 41 EAST.



SHEET 2 OF 4



**MICHAEL B. SCHORAH
& ASSOCIATES, INC.**
1805 FOREST HILL BLVD., SUITE 208
WEST PALM BEACH, FLORIDA 33409
TEL: (561) 968-0099 FAX: (561) 942-9726
LW 2438

**BOCA RESERVE PUD
A PLANNED UNIT DEVELOPMENT**

N73381 803
E00669 387
FOUND P.B.C. BRASS CHAIN IN CONCRETE
STAMPED "VW"

SEE DETAIL "B" ABOVE

TRACT "O-5"
BOUNDARY PLAT OF GROULE COUNTRY
CHROVED R.S. 4281, PG. 717
VIA O.R.B. 460, PAGE 1108
PARCEL L-1
WATER MANAGEMENT AREA
WINDING LAKES
SECTION ONE
(P.B. 40, PAGE 41-43)

POINT OF COMMENCEMENT
EAST 1/4 CORNER OF SECTION 27-47-41
FOUND P.B.C. BRASS DISK IN CONCRETE
E-006597 053

60' PATHWAY EASEMENT
PER RESOLUTION NO. R-2009-1546
(O.R.B. 2345, PAGE 1449)

12" WINDSHIELD RIV. ANCHORED
TO 6" REINFORCED CONCRETE
AND 10" U.L. INSULATED
PER O.R.B. 2345, PAGE 1449

60' WINDSHIELD RIV. ANCHORED
TO 6" REINFORCED CONCRETE
AND 10" U.L. INSULATED
PER O.R.B. 2345, PAGE 1449

60' WINDSHIELD RIV. ANCHORED
TO 6" REINFORCED CONCRETE
AND 10" U.L. INSULATED
PER O.R.B. 2345, PAGE 1449

60' WINDSHIELD RIV. ANCHORED
TO 6" REINFORCED CONCRETE
AND 10" U.L. INSULATED
PER O.R.B. 2345, PAGE 1449

60' WINDSHIELD RIV. ANCHORED
TO 6" REINFORCED CONCRETE
AND 10" U.L. INSULATED
PER O.R.B. 2345, PAGE 1449

60' WINDSHIELD RIV. ANCHORED
TO 6" REINFORCED CONCRETE
AND 10" U.L. INSULATED
PER O.R.B. 2345, PAGE 1449

60' WINDSHIELD RIV. ANCHORED
TO 6" REINFORCED CONCRETE
AND 10" U.L. INSULATED
PER O.R.B. 2345, PAGE 1449

60' WINDSHIELD RIV. ANCHORED
TO 6" REINFORCED CONCRETE
AND 10" U.L. INSULATED
PER O.R.B. 2345, PAGE 1449

60' WINDSHIELD RIV. ANCHORED
TO 6" REINFORCED CONCRETE
AND 10" U.L. INSULATED
PER O.R.B. 2345, PAGE 1449