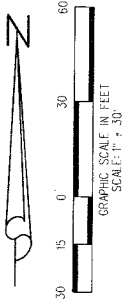
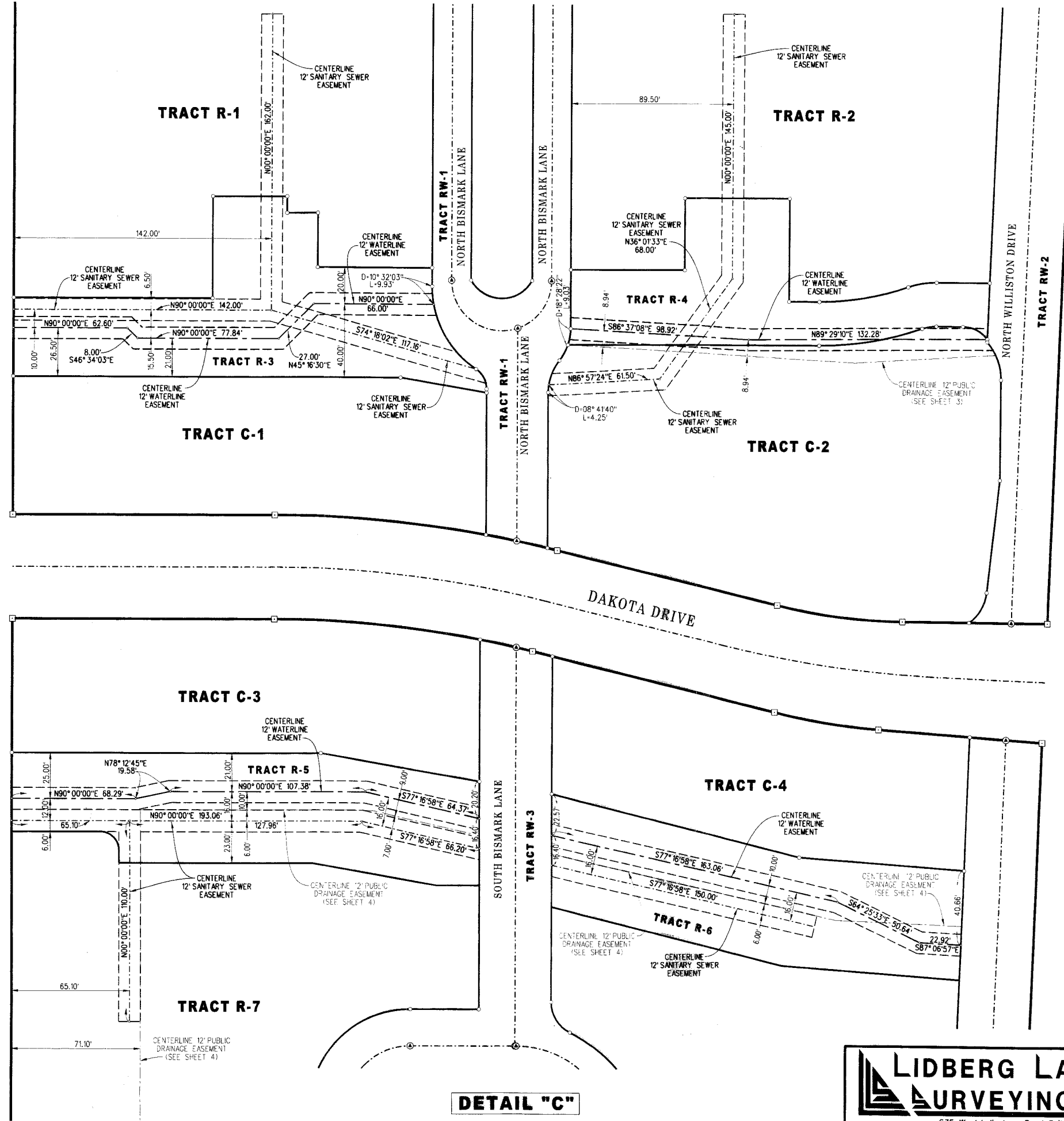


DAKOTA

BEING A REPLAT OF TRACTS NC1R AND NC2R OF ABACOA PLAT No. 4 REPLAT,
 AS RECORDED IN PLAT BOOK 99, PAGES 14 THROUGH 21, PUBLIC RECORDS OF PALM BEACH COUNTY, FLORIDA,
 LYING IN SECTION 14, TOWNSHIP 41 SOUTH, RANGE 42 EAST, TOWN OF JUPITER, PALM BEACH COUNTY, FLORIDA
 MAY 2012 SHEET 5 OF 5

11



DETAIL SHEET WATERLINE AND SANITARY SEWER EASEMENTS

DETAIL "C"

LIDBERG LAND SURVEYING, INC.
 LB4431 675 West Indiantown Road, Suite 200, Jupiter, Florida 33458 TEL. 561-746-8454

CAD: K:\JUST \ 14412 \ 99-14 \ 07-076-306A \ 07-076-306A.DGN			
REF.			
FLD.	FB.	PG.	JOB 07-076-306A
OFF. R.J.W.			DATE MAY 2012
CKD. D.C.L.	SHEET 5	OF 5	DWG. 007-076PP