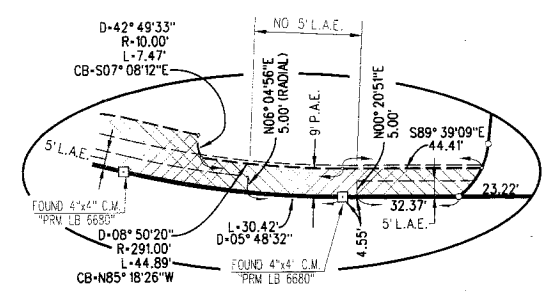
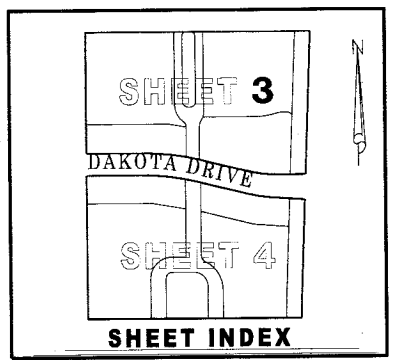
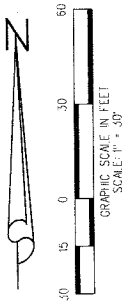
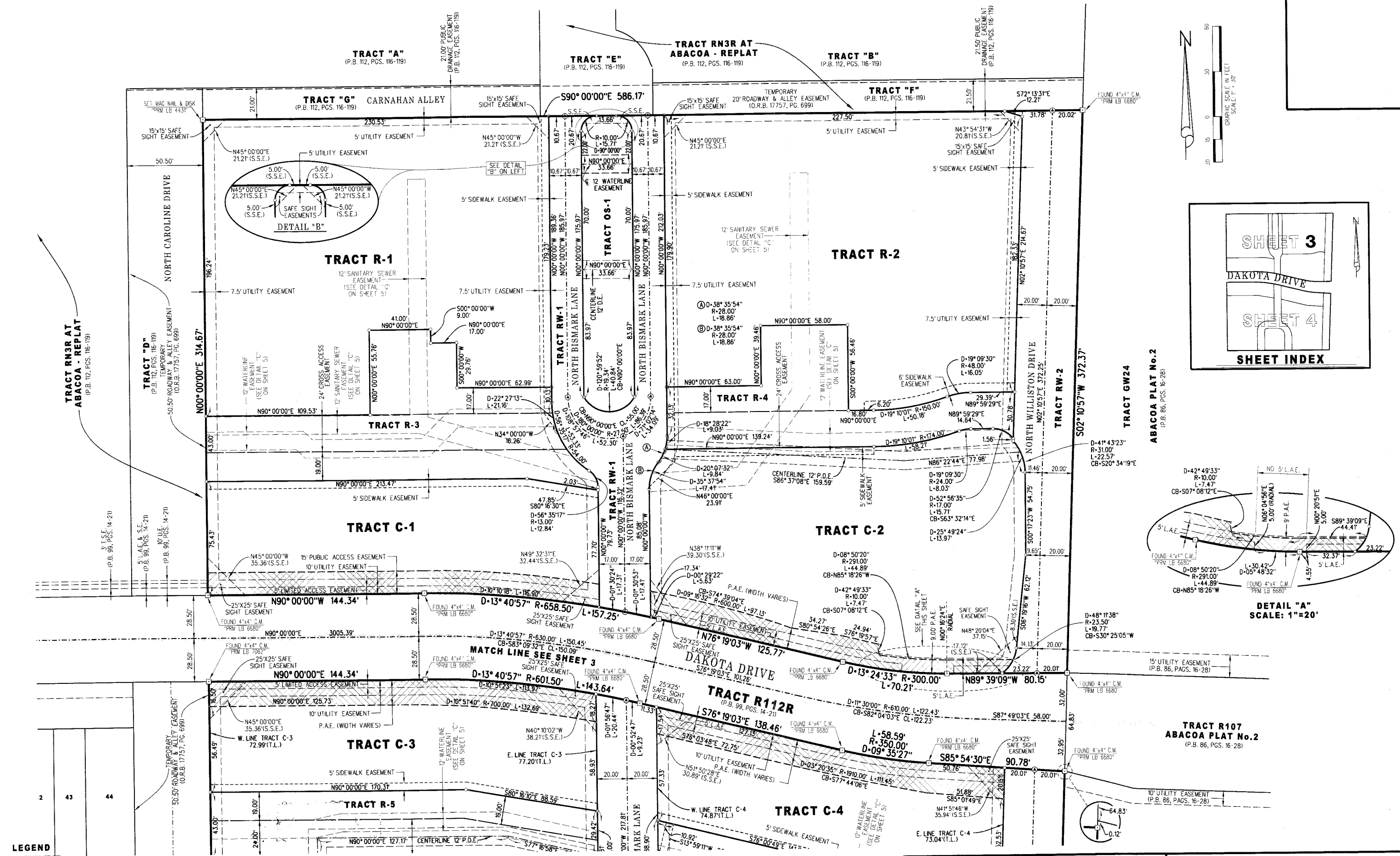


DAKOTA

BEING A REPLAT OF TRACTS NC1R AND NC2R OF ABACOA PLAT No. 4 REPLAT,
 AS RECORDED IN PLAT BOOK 99, PAGES 14 THROUGH 21, PUBLIC RECORDS OF PALM BEACH COUNTY, FLORIDA,
 LYING IN SECTION 14, TOWNSHIP 41 SOUTH, RANGE 42 EAST, TOWN OF JUPITER, PALM BEACH COUNTY, FLORIDA
 MAY 2012 SHEET 3 OF 5



- LEGEND**
- = LIMITS OF PUBLIC ACCESS EASEMENT
 - = DENOTES PERMANENT CONTROL POINT (P.C.P.) SET MAG NAIL & DISK STAMPED "PCP LB4431"
 - = DENOTES PERMANENT REFERENCE MONUMENT (P.R.M.) SEE MAP SHEET FOR CORNERS SET OR FOUND

LIDBERG LAND SURVEYING, INC.
 LB4431 675 West Indiantown Road, Suite 200, Jupiter, Florida 33458 TEL. 561-746-8454

CAD. K:\JUST \144142 \99-14 \07-076-306A \07-076-306ADGN			
REF.			
F.L.D.	FB.	PG.	JOB 07-076-306A
OFF. R.J.W.			DATE MAY 2012
CKD. D.C.L.	SHEET 3	OF 5	DWG. 007-076PP