

# ALDI PARK

BEING A REPLAT OF COUNTRY WEST AS RECORDED IN PLAT BOOK 40, PAGES 179 & 180, OF THE PUBLIC RECORDS OF PALM BEACH COUNTY, FLORIDA, LYING IN THE NORTHEAST ONE-QUARTER OF SECTION 25, TOWNSHIP 43 SOUTH, RANGE 41 EAST, VILLAGE OF ROYAL PALM BEACH, PALM BEACH COUNTY, FLORIDA ALONG WITH THE SOUTHEAST ONE-QUARTER OF THE NORTHWEST ONE-QUARTER OF THE NORTHEAST ONE-QUARTER OF SECTION 25, TOWNSHIP 43 SOUTH, RANGE 41 EAST, PALM BEACH COUNTY, FLORIDA

### CURVE DATA

CURVE	DELTA	ARC LENGTH	RADIUS
C1	90° 02' 37"	78.58	50.00
C2	19° 33' 10"	128.83	377.50
C3	19° 32' 47"	110.02	322.50
C4	20° 22' 16"	114.66	322.50
C5	20° 36' 42"	116.02	322.50
C6	89° 44' 11"	78.31	50.00
C7	19° 47' 12"	120.87	350.00
C8	19° 32' 47"	119.40	350.00

### LINE DATA

LINE	BEARING	DISTANCE
L1	N 01° 50' 12" E	20.96'
L2	N 01° 49' 49" E	85.85'
L3	N 01° 49' 49" E	94.88'
L4	N 01° 50' 12" E	97.08'
L5	N 01° 49' 49" E	85.53'
L6	S 88° 06' 39" E	63.34'

### UTILITY EASEMENT LEGEND:

- O.R.B. 14578, PG. 1895
- O.R.B. 14578, PG. 1892

19

SHEET 4

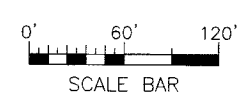
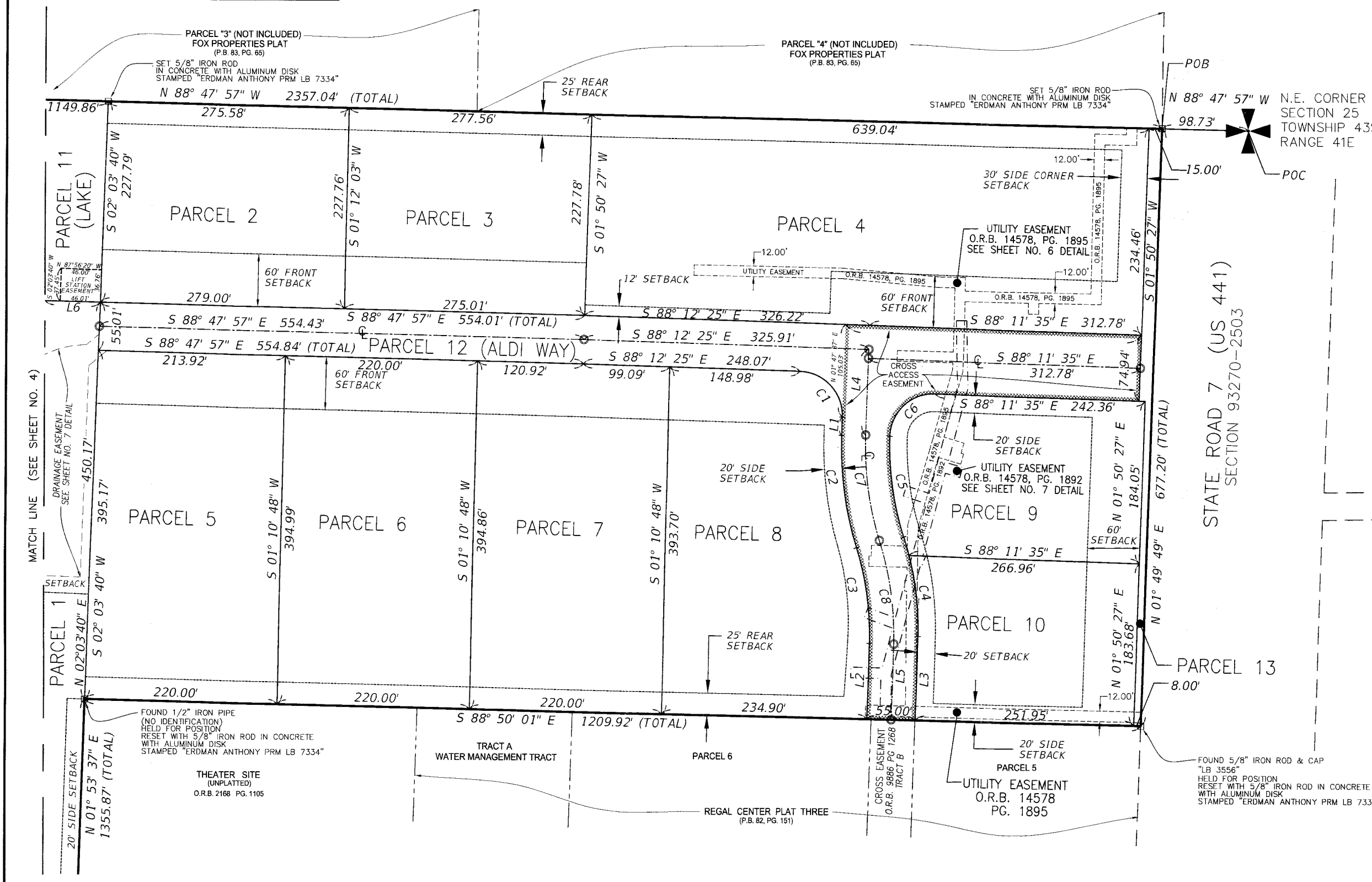
SHEET 5

**KEY MAP**  
NOT TO SCALE

STATE OF FLORIDA  
COUNTY OF PALM BEACH  
THIS PLAT WAS FILED FOR  
RECORD AT \_\_\_\_\_ M.  
THIS \_\_\_\_\_ DAY OF \_\_\_\_\_  
A.D. 20\_\_\_\_ AND DULY RECORDED  
IN PLAT BOOK \_\_\_\_\_ ON  
PAGES \_\_\_\_\_ AND \_\_\_\_\_.

SHARON R. BOCK  
CLERK AND COMPTROLLER

BY: \_\_\_\_\_  
DEPUTY CLERK



- LEGEND:**
- ⊕ = CENTERLINE
  - C.P.B. = COUNTY OF PALM BEACH
  - D.B. = DEED BOOK
  - D.E. = DRAINAGE EASEMENT
  - L = LENGTH
  - LB = LICENSED BUSINESS
  - LLC = LIMITED LIABILITY CORPORATION
  - ORB = OFFICIAL RECORDS BOOK
  - P = PROPERTY LINE
  - P.B. = PLAT BOOK
  - PCP = PERMANENT CONTROL POINT
  - PG. = PAGE
  - POB = POINT OF BEGINNING
  - POC = POINT OF COMMENCEMENT
  - PRM = PERMANENT REFERENCE MONUMENT
  - PSM = PROFESSIONAL SURVEYOR & MAPPER
  - R = RADIUS
  - R/W = RIGHT OF WAY
  - O.R.B. = OFFICIAL RECORD BOOK
  - U.E. = UTILITY EASEMENT
  - Δ = DELTA ANGLE
  - = FOUND 4"x4" CONCRETE MONUMENT
  - = SET 5/8" IRON ROD IN CONCRETE WITH ALUMINUM DISK STAMPED "ERDMAN ANTHONY PRM LB 7334"
  - = SET MAG NAIL WITH DISK STAMPED "PCP LB 7334"
  - ⊕ = SECTION CORNER

SHEET 3 of 7

**ERDMAN ANTHONY**

1402 ROYAL PALM BEACH BLVD., BLDG 500  
ROYAL PALM BEACH, FLORIDA 33411  
TELEPHONE 561-753-9723 FAX 561-753-9724  
EB-25912 LB-7334