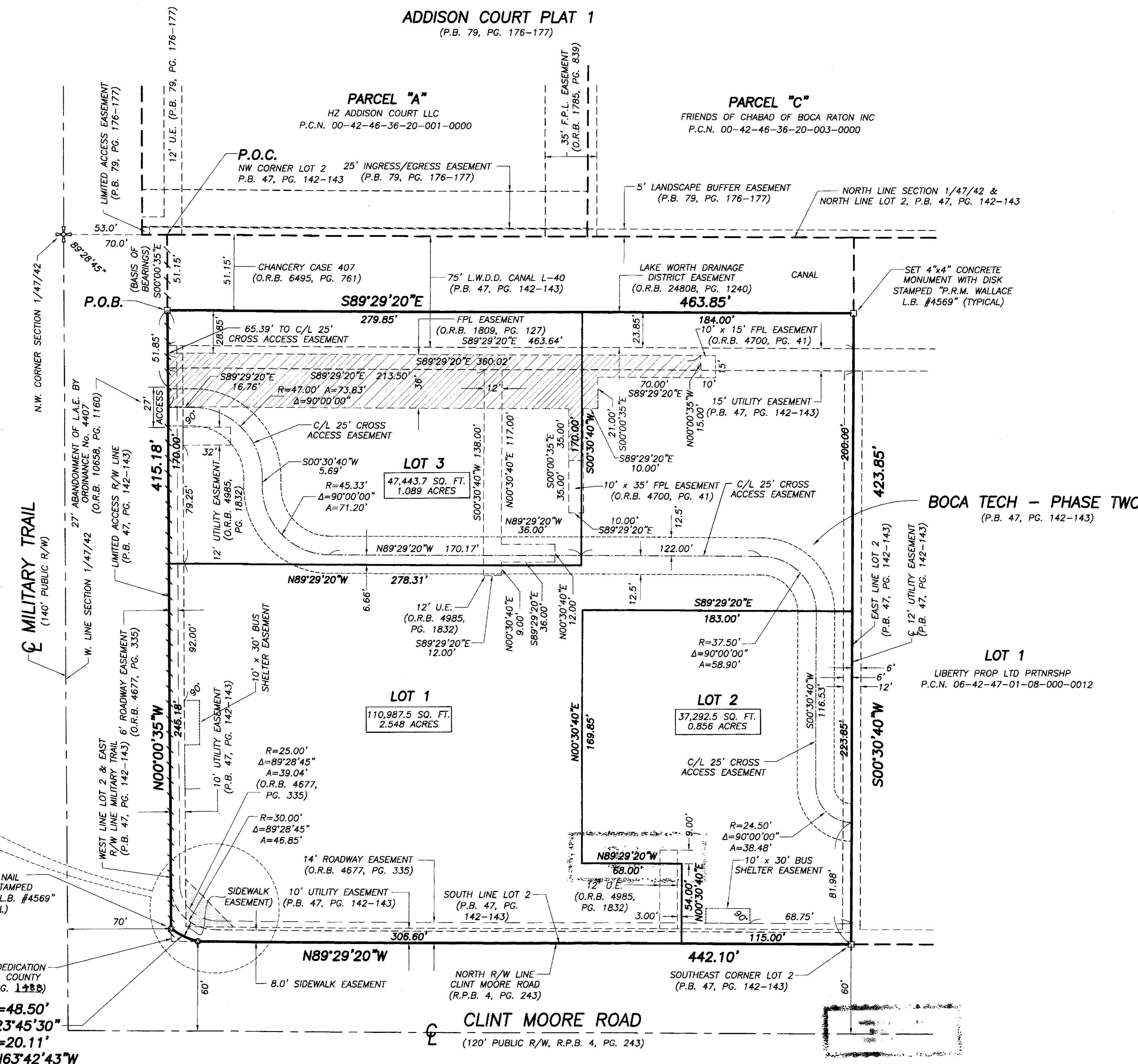
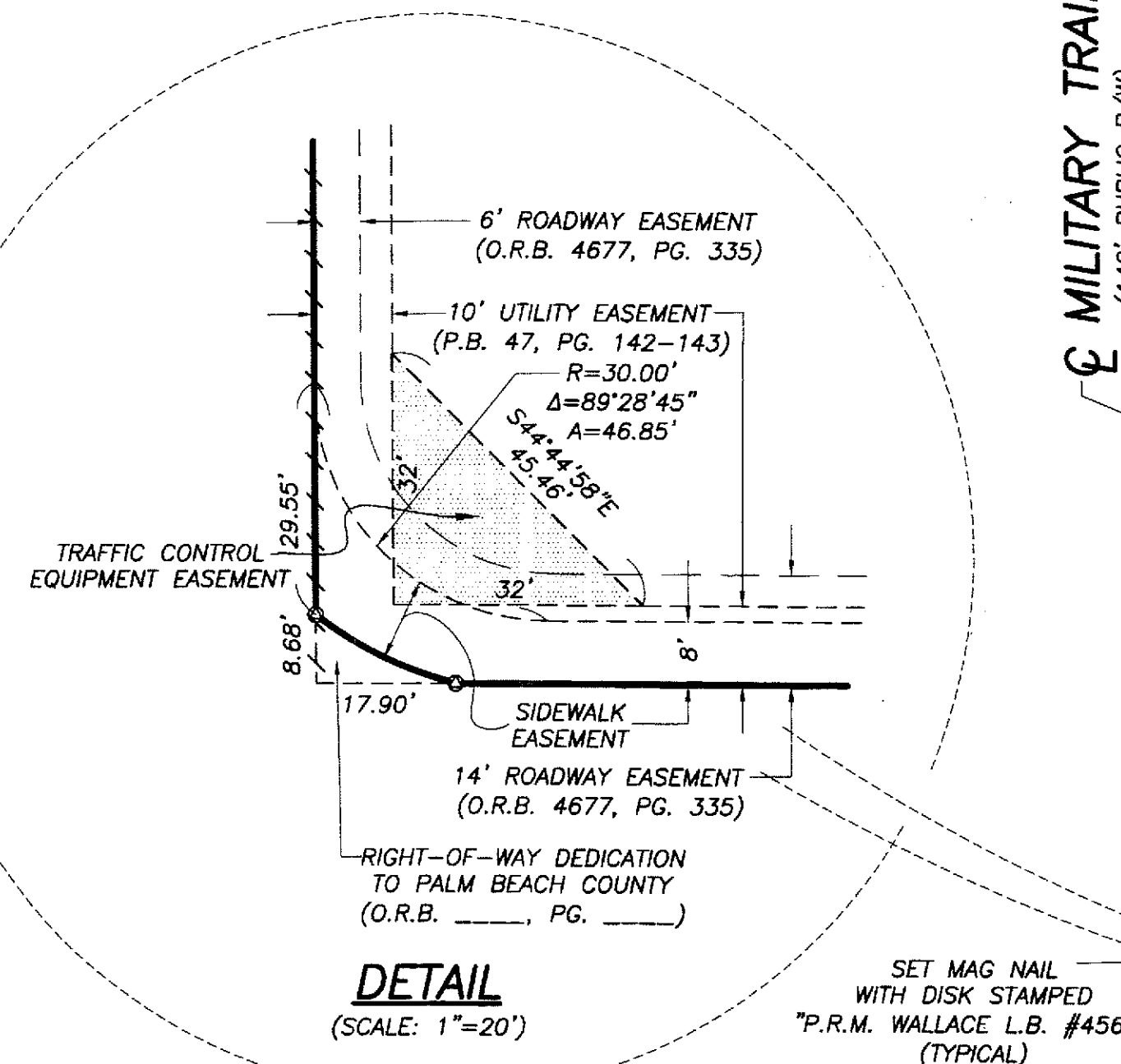
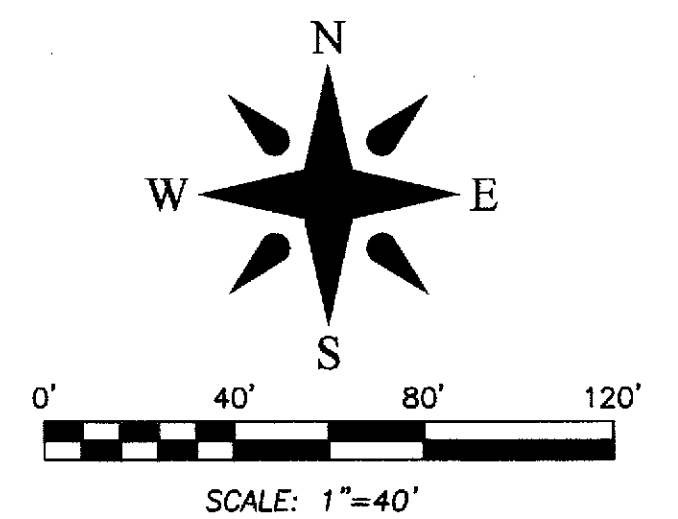


1801 CLINT MOORE ROAD

BEING A REPLAT OF LOT 2 OF BOCA TECH - PHASE TWO, ACCORDING TO THE PLAT THEREOF, RECORDED IN PLAT BOOK 47, PAGES 142 AND 143 OF THE PUBLIC RECORDS OF PALM BEACH COUNTY, FLORIDA. LYING IN SECTION 1, TOWNSHIP 47 SOUTH, RANGE 42 EAST, CITY OF BOCA RATON, PALM BEACH COUNTY, FLORIDA
JULY, 2012

ADDISON COURT PLAT 1
(P.B. 79, PG. 176-177)

- LEGEND**
- CL = CENTERLINE
 - L.B. = LICENSED BUSINESS
 - L.S. = LICENSED SURVEYOR
 - L.W.D.D. = LAKE WORTH DRAINAGE DISTRICT
 - O.R.B. = OFFICIAL RECORDS BOOK
 - P.B. = PLAT BOOK
 - P.C.N. = PARCEL CONTROL NUMBER
 - PG. = PAGE
 - R.P.B. = ROAD PLAT BOOK
 - R/W = RIGHT-OF-WAY
 - Δ = CENTRAL ANGLE
 - R = RADIUS
 - A = ARC
 - C.B. = CHORD BEARING
 - P.R.M. = PERMANENT REFERENCE MONUMENT
 - U.E. = UTILITY EASEMENT
 - ☐ = SET 4" x 4" CONCRETE MONUMENT WITH DISK STAMPED "P.R.M. WALLACE L.B. #4569"
 - ⊙ = SET MAG NAIL WITH DISK STAMPED "P.R.M. WALLACE L.B. #4569"



1801 CLINT MOORE ROAD

WALLACE SURVEYING
CORP., LICENSED BUSINESS #4569
5553 VILLAGE BOULEVARD, WEST PALM BEACH, FLORIDA 33407 | (561) 640-4551

FIELD:	JOB NO. 98-1153	F.S. PG.
OFFICE: R.C.	DATE: JULY, 2011	DWG. NO. 98-1153-6
CRD:	REF. 98-1153-6 PLAT.DWG	SHEET 2 OF 2