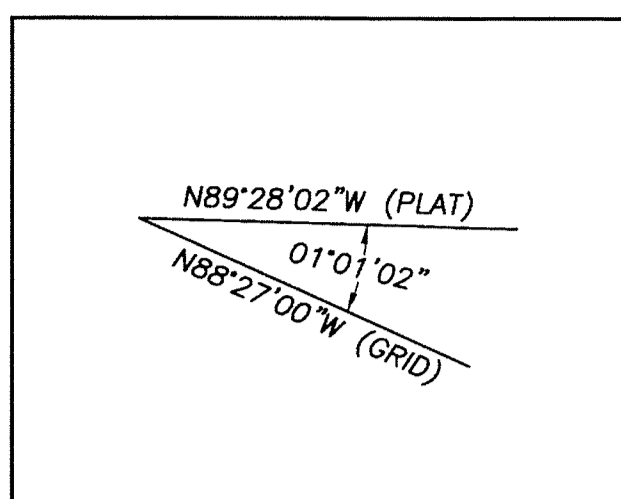


Tonkawa Farms

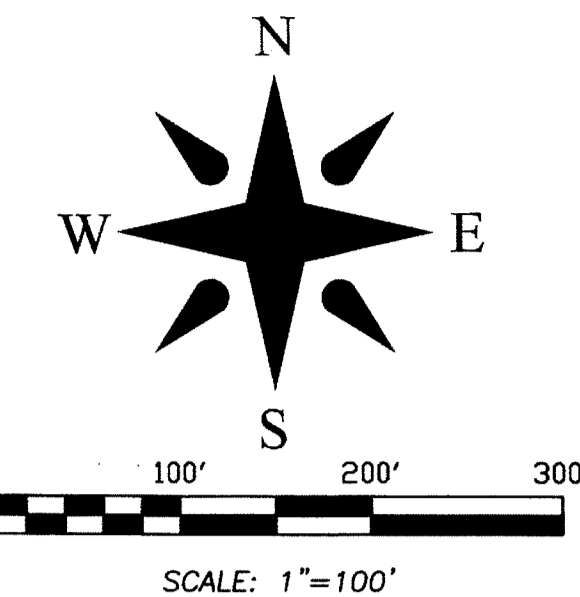
LYING IN SECTION 29, TOWNSHIP 44 SOUTH, RANGE 41 EAST,
VILLAGE OF WELLINGTON, PALM BEACH COUNTY, FLORIDA
JANUARY 2012

BEARING ROTATION EQUATION



20' BRIDLE PATH, WATERLINE & COMMUNICATIONS EASEMENT (O.R.B. 17951, PG. 860)

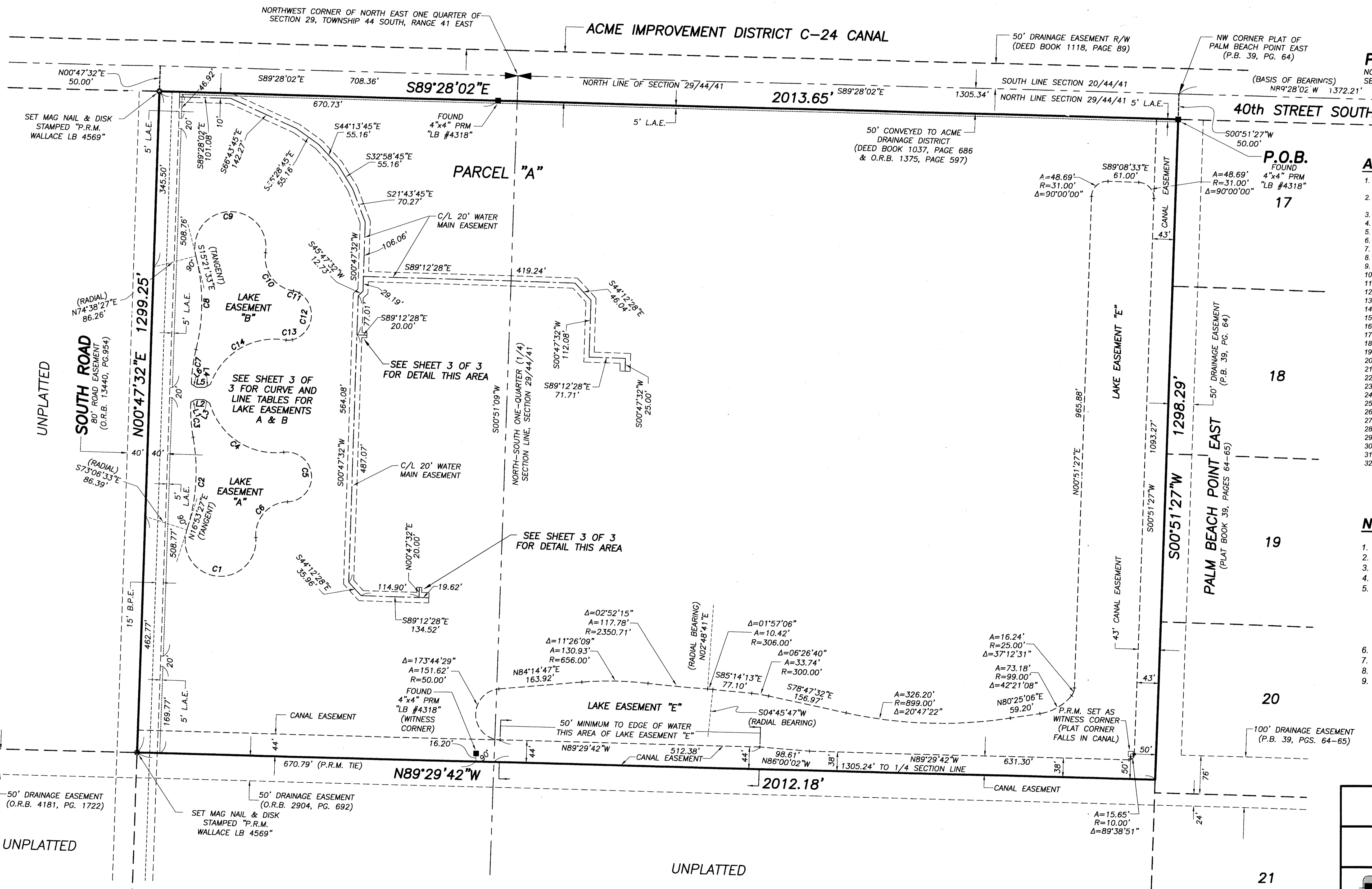
120' ADDITIONAL CANAL R/W DECEDED TO P.B.C. BY O.R.B. 6601, PG. 142 & CONVEYED TO THE VILLAGE OF WELLINGTON BY O.R.B. 10991, PG. 1445



70

UNPLATTED

UNPLATTED



P.O.C. NORTHEAST CORNER SECTION 29/44/41 SHEET 2 OF 3

ABBREVIATIONS AND SYMBOLS

1. = DENOTES SET 4" X 4" CONCRETE MONUMENT
2. = MAG NAIL & DISK STAMPED "P.R.M. WALLACE L.B. #4569"
3. = BASELINE
4. = BRIDLE PATH EASEMENT
5. = CENTERLINE
6. = RIGHT OF WAY
7. = PLAT BOOK
8. = PAGES
9. = SECTION
10. = TOWNSHIP
11. = RANGE
12. = UTILITY EASEMENT
13. = DRAINAGE EASEMENT
14. = DEED BOOK
15. = ARC LENGTH
16. = CENTRAL ANGLE
17. = RADIUS
18. = CHORD BEARING
19. = OFFICIAL RECORDS BOOK
20. = ROAD PLAT BOOK
21. = UTILITY ACCESS EASEMENT
22. = POINT OF COMMENCEMENT
23. = POINT OF BEGINNING
24. = PALM BEACH COUNTY
25. = PERMANENT REFERENCE MONUMENT
26. = FOUND
27. = EASEMENT
28. = WESTERLY
29. = FLORIDA POWER AND LIGHT
30. = SAFE SIGHT EASEMENT
31. = NORTHING
32. = EASTING

NOTES

1. Coordinates shown are grid.
2. Datum = NAD 83, 1990 adjustment.
3. Zone = Florida East
4. Linear unit = US foot
5. Coordinates shown on the control P.R.M.'S are based upon the Florida State Plane coordinate system on the North American datum of 1983, 1990 adjustment as readjusted by Palm Beach County, Florida, in 1998.
6. All distances are ground.
7. Scale factor = 1.000005644
8. Ground distance x scale factor = grid distance
9. The North line of Section 29, Township 44 South, Range 41 East, is assumed to bear North 89°28'02" West and all other bearings are relative thereto.

PLAT OF

Tonkawa Farms

WALLACE SURVEYING
CORP. LICENSED BUSINESS # 4069
5553 VILLAGE BOULEVARD, WEST PALM BEACH, FLORIDA 33407 * (561) 640-4551

FIELD:	JOB No.: 11-1147.8	F.B. PG.	
OFFICE: R.C.	DATE: JANUARY 2011	DWG. No.: 11-1147-6	
CK'D:	REF: 94-1155-14.DWG	SHEET 2 OF 3	