

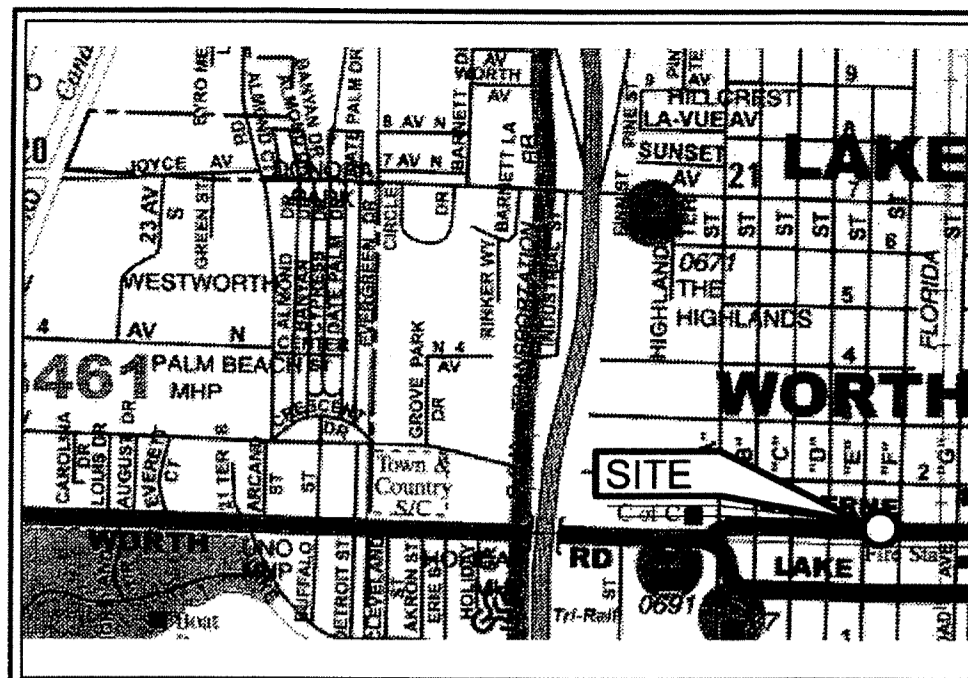
URBAN ARTS LOFTS

BEING A REPLAT OF LOTS 6 THRU 10, BLOCK "E", AND LOTS 21 THRU 30, BLOCK 10
"THE PALM BEACH FARMS CO., PLAT NO. 2, THE TOWNSITE OF LUCERNE (NOW LAKE WORTH)"
PLAT BOOK 2, PAGE 29

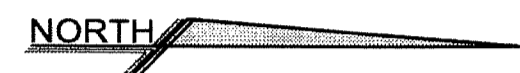
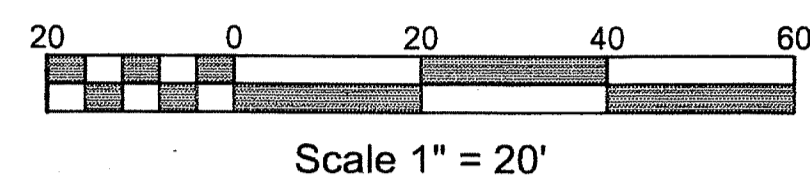
BEING IN SECTIONS 21 AND 28, TOWNSHIP 44 SOUTH, RANGE 43 EAST,
CITY OF LAKE WORTH, PALM BEACH COUNTY, FLORIDA
JANUARY 2012

SHEET 2 OF 2

STATE OF FLORIDA
COUNTY OF PALM BEACH
THIS PLAT WAS FILED FOR
RECORD AT _____ DAY OF _____ M. THIS
20____ AND DULY RECORDED
IN PLAT BOOK No. _____
ON PAGE _____
SHARON R. BROCK
CLERK CIRCUIT COURT
BY: _____
DEPUTY CLERK

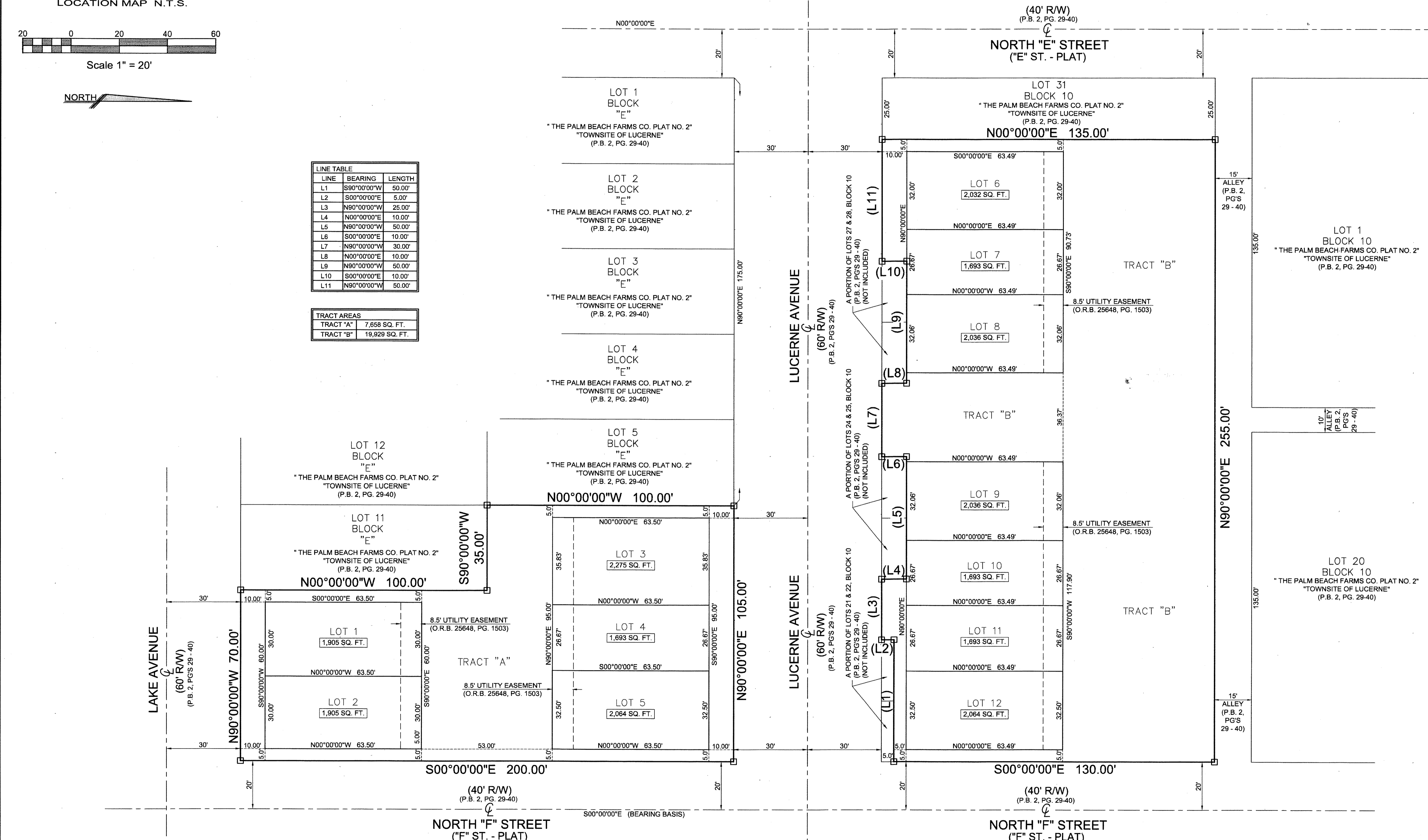


LOCATION MAP N.T.S.



LINE	BEARING	LENGTH
L1	S80°00'00"W	50.00'
L2	S00°00'00"E	5.00'
L3	N90°00'00"W	25.00'
L4	N00°00'00"E	10.00'
L5	N90°00'00"W	50.00'
L6	S00°00'00"E	10.00'
L7	N90°00'00"W	30.00'
L8	N00°00'00"E	10.00'
L9	N90°00'00"W	50.00'
L10	S00°00'00"E	10.00'
L11	N90°00'00"W	50.00'

TRACT AREAS	AREA
TRACT "A"	7,658 SQ. FT.
TRACT "B"	19,929 SQ. FT.



LEGEND:

	= SET P.C.P., 'P.K.' NAIL & DISC STAMPED		= ARC LENGTH
	= SET PERMANENT REFERENCE MONUMENT (P.R.M.) 4" X 4" CONCRETE MONUMENT STAMPED "M.L.S., L.B.#6838"		= OFFICIAL RECORD BOOK
	= CENTRAL ANGLE		= PAGE
	= CENTERLINE		= PERMANENT CONTROL POINT
	= EASEMENT		= RADIUS
			= RIGHT OF WAY

SCALE: AS NOTED	MILLER LAND SURVEYING 1121 LAKE AVENUE LAKE WORTH, FLORIDA 33460 PHONE: (561) 586-2669 - FAX: (561) 582-0151 www.millersurveying.com e-mail: millersurveying@aol.com	REFERENCES: B67/15
DRAWN BY: PICARD		REV. JOB NO'S.
FIELD WK: NA		JOB NO. Y110913
DATE: 01/10/2012		L - 1799