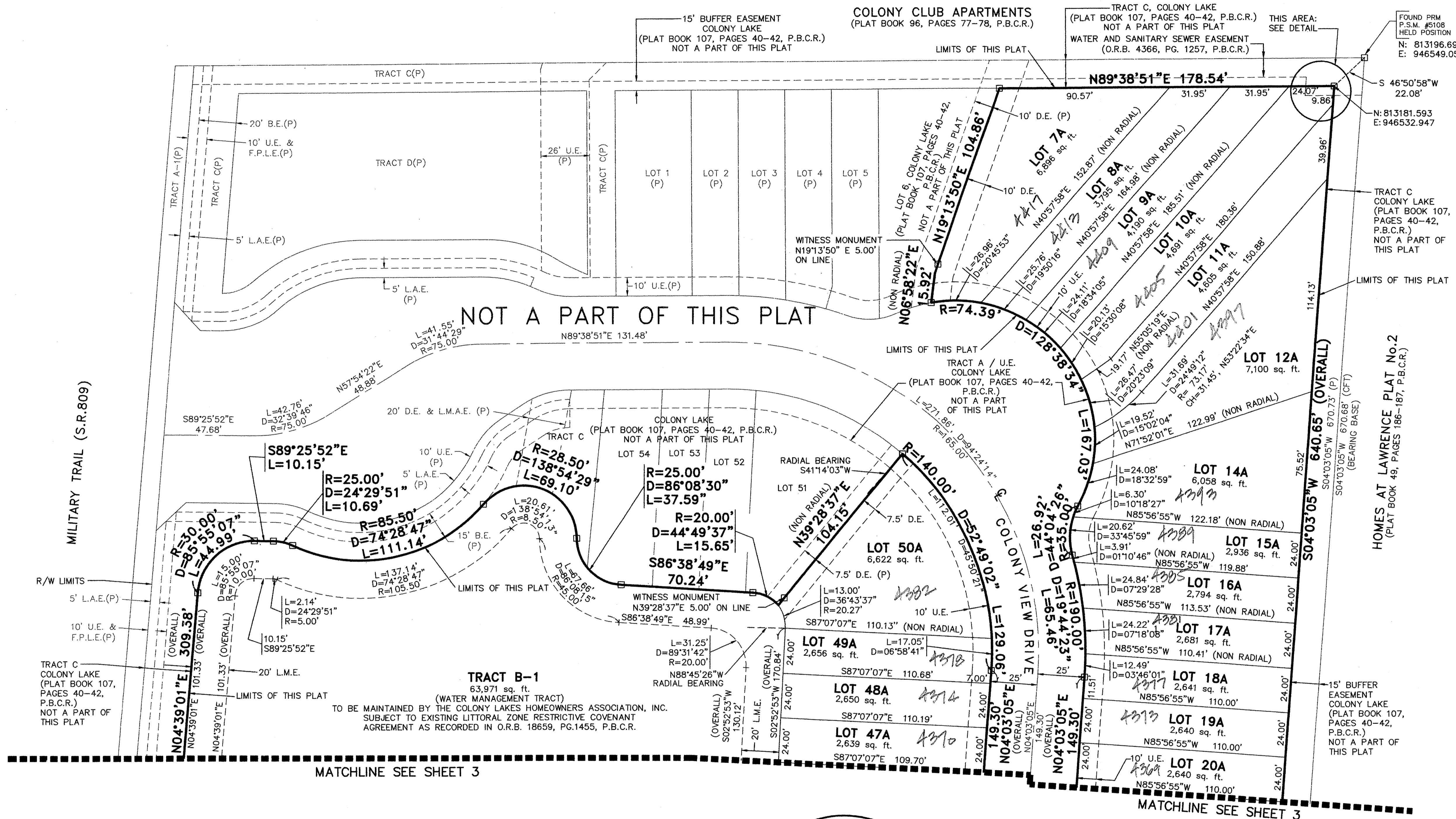


COLONY LAKE RE-PLAT NO. 1

BEING A REPLAT OF A PORTION OF COLONY LAKE
RECORDED IN PLAT BOOK 107, PAGES 40 THROUGH 42, PUBLIC RECORDS OF PALM BEACH COUNTY, FLORIDA
ALSO LYING WITHIN A PORTION OF
SECTION 12, TOWNSHIP 45 SOUTH, RANGE 42 EAST, PALM BEACH COUNTY, FLORIDA
SHEET 2 OF 3

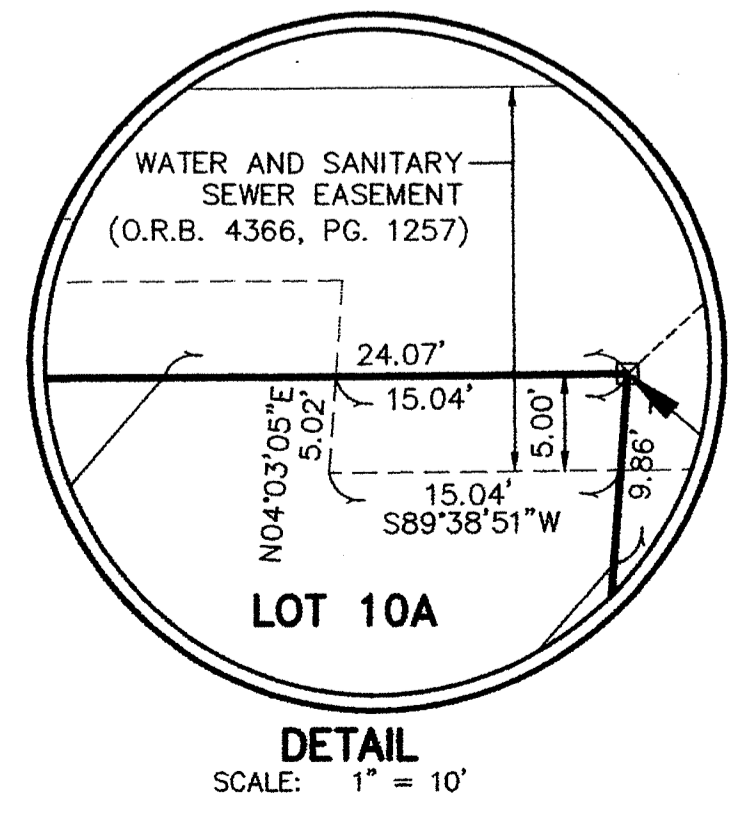
STATE OF FLORIDA)
COUNTY OF PALM BEACH) S.S. **77**

THIS INSTRUMENT WAS FILED FOR
RECORD AT _____ M.
THIS _____
DAY OF _____ 20____
AND DULY RECORDED IN:
PLAT BOOK _____
ON PAGE _____
SHARON R. BOCK
CLERK & COMPTROLLER
PALM BEACH COUNTY
BY: _____
DEPUTY CLERK



LEGEND

- | | | | |
|----------|---|----------|--|
| B.E. | = BUFFER EASEMENT | P.B.C.R. | = PALM BEACH COUNTY RECORDS |
| CH | = CHORD DIRECTION & LENGTH | P.C.N. | = PARCEL CONTROL NUMBER |
| D | = CENTRAL ANGLE | PG. | = PAGE(S) |
| F.P.L.E. | = FLORIDA POWER AND LIGHT EASEMENT | P.R.M. | = PERMANENT REFERENCE MONUMENT |
| L | = ARC LENGTH | R | = RADIUS |
| L.A.E. | = LIMITED ACCESS EASEMENT | (T) | = TOTAL |
| LB | = LICENSED BUSINESS | U.E. | = UTILITY EASEMENT |
| L.M.A.E. | = LAKE MAINTENANCE ACCESS EASEMENT | □ | = PERMANENT REFERENCE MONUMENT (P.R.M.) 4" DIAMETER CONCRETE MONUMENT WITH P.K. NAIL IN BRASS DISC STAMPED "PRM LB 6599" |
| L.M.E. | = LAKE MAINTENANCE EASEMENT | | |
| O.R.B. | = OFFICIAL RECORD BOOK | | |
| (P) | = PER THE PLAT OF COLONY LAKE (P.B. 107, PG. 40 P.B.C.R.) | | |
| P.B. | = PLAT BOOK | | |



DENNIS J. LEAVY & ASSOCIATES, INC.
LAND SURVEYORS AND MAPPERS

460 BUSINESS PARK WAY * SUITE B * ROYAL PALM BEACH, FL * 33411
PHONE: (561) 753-0650 FAX: (561) 753-0290
E-MAIL: DJLASS@BELLSOUTH.NET

SCALE: AS SHOWN	CHECKED BY: DAB	DATE: 09/06/12
DRAWN BY: NFC	JOB NO.: 12-056-001	

THIS INSTRUMENT WAS PREPARED BY:
DAVID A. BOWER, P.S.M. #5888 IN THE OFFICES
OF DENNIS J. LEAVY AND ASSOCIATES, INC.
CERTIFICATE OF AUTHORIZATION NUMBER: LB6599
460 BUSINESS PARK WAY, SUITE B
ROYAL PALM BEACH, FLORIDA 33411
PHONE: (561) 753-0650
FAX: (561) 753-0290
E-MAIL: DJLASS@BELLSOUTH.NET