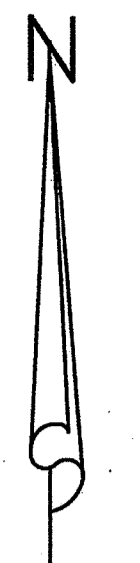
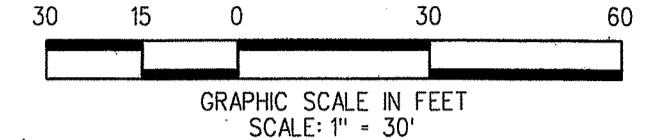
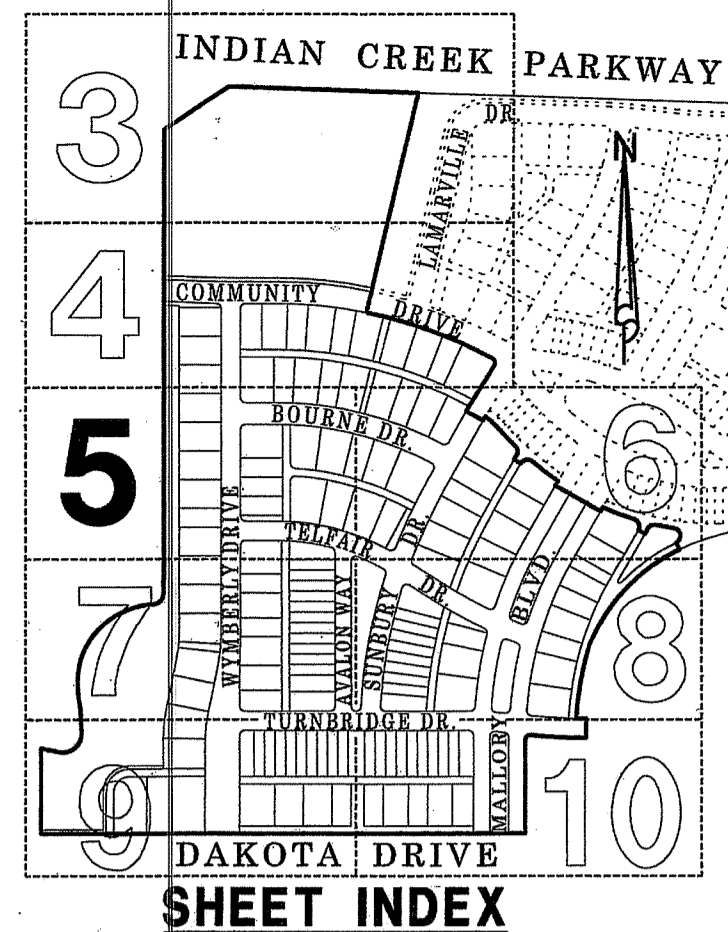


WINDSOR PARK AT ABACOA - PLAT NO. 2

BEING A REPLAT OF A PORTION OF TRACT "A" OF THE PLAT OF TRACT RN3R AT ABACOA - REPLAT AS RECORDED IN PLAT BOOK 112, PAGES 116 THROUGH 119, PUBLIC RECORDS OF PALM BEACH COUNTY, FLORIDA. LYING IN SECTION 14, TOWNSHIP 41 SOUTH, RANGE 42 EAST, TOWN OF JUPITER, PALM BEACH COUNTY, FLORIDA
NOVEMBER 2012
SHEET 5 OF 10



LEGEND:

- ⊙ DENOTES PERMANENT CONTROL POINT (P.C.P.) SET MAG NAIL & DISK STAMPED "PCP LB4431" UNLESS OTHERWISE NOTED
- DENOTES PERMANENT REFERENCE MONUMENT (P.R.M.) SET 4"x4" CONCRETE MONUMENT WITH DISK STAMPED "PRM LB4431" UNLESS OTHERWISE NOTED
- DENOTES PERMANENT REFERENCE MONUMENT (P.R.M.) SET MAG NAIL & DISK STAMPED "PRM LB4431" UNLESS OTHERWISE NOTED
- ⊕ DENOTES CENTERLINE OF RIGHT OF WAY

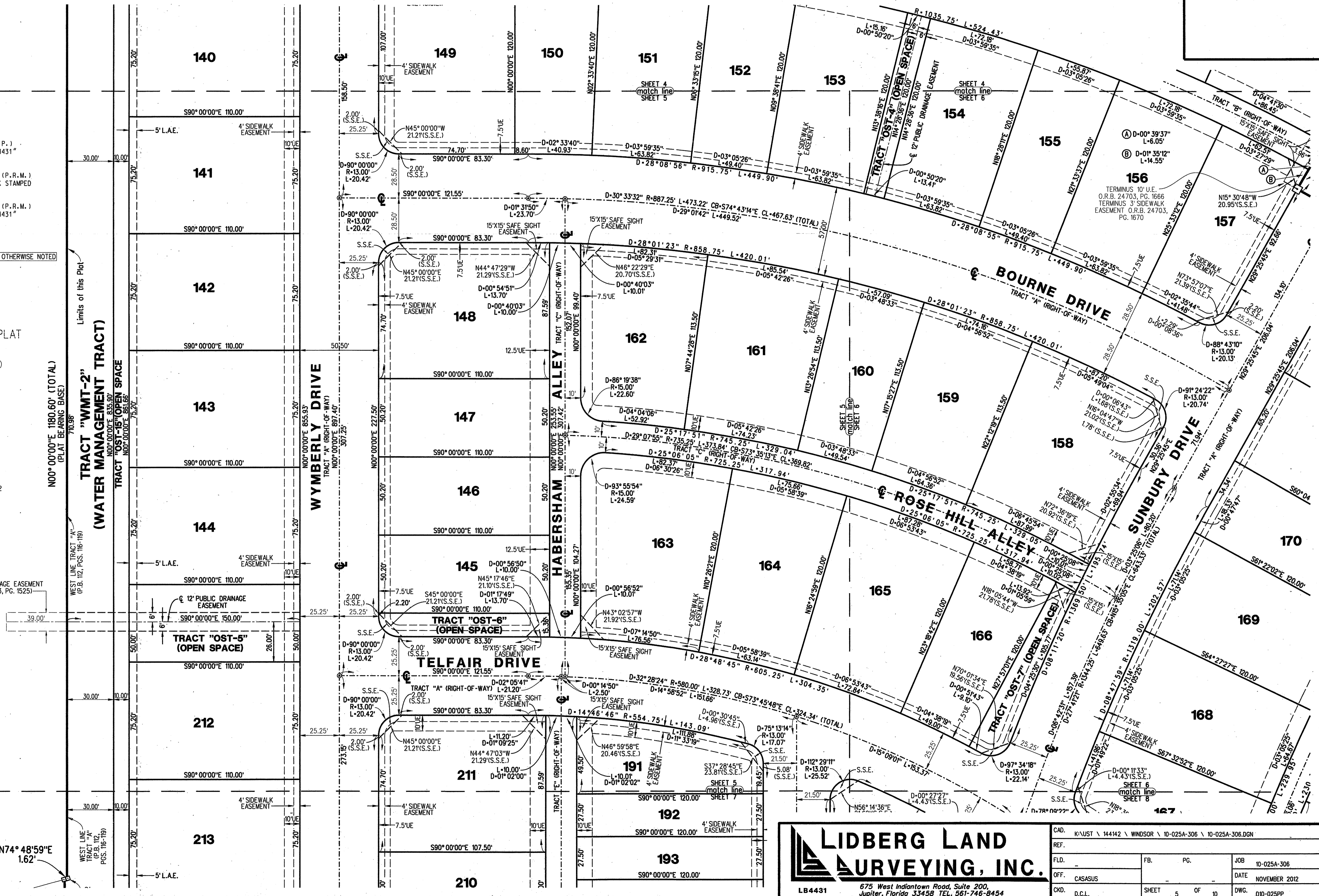
LINES, WHICH INTERSECT CURVES, ARE RADIAL UNLESS OTHERWISE NOTED

ABBREVIATIONS:

- CB = CHORD BEARING
- CL = CHORD LENGTH
- D = DELTA
- D.E. = DRAINAGE EASEMENT
- F.P.L. = FLORIDA POWER & LIGHT
- L = ARC LENGTH
- L.A.E. = LIMITED ACCESS EASEMENT
- O.R.B. = OFFICIAL RECORD BOOK
- N.E. = NORTHEAST
- N.W. = NORTHWEST
- (P) = AS SHOWN ON P.B. 114 PGS. 135-142
- P.C.P. = PERMANENT CONTROL POINT
- P.B. = PLAT BOOK
- P.D.E. = PUBLIC DRAINAGE EASEMENT
- PG. = PAGE
- P.R.M. = PERMANENT REFERENCE MONUMENT
- P.S.M. = PROFESSIONAL SURVEYOR AND MAPPER
- R = RADIUS
- R.W.L.E. = RAW WATER LINE EASEMENT
- S.E. = SOUTHEAST
- S.S.E. = SAFE SIGHT EASEMENT
- S.W. = SOUTHWEST
- U.E. = UTILITY EASEMENT 12" PUBLIC DRAINAGE EASEMENT (O.R.B. 25563, PG. 1525)

TRACT "GW36"
ABACOA - PLAT NO. 4 REPLAT
(P.B. 99, PGS. 14-21)
(NOT PART OF THIS PLAT)

TRACT "GW36"
ABACOA - PLAT NO. 4 REPLAT
(P.B. 99, PGS. 14-21)
(NOT PART OF THIS PLAT)



LIDBERG LAND SURVEYING, INC.
LB4431 675 West Indiantown Road, Suite 200, Jupiter, Florida 33458 TEL. 561-746-8454

CAD.	K:\JUST \14412 \WINDSOR \10-025A-306 \10-025A-306.DGN
REF.	
FLD.	
OFF.	CASASUS
CKD.	D.C.L.
FB.	
PC.	
JOB	10-025A-306
DATE	NOVEMBER 2012
DWG.	D10-025PP
SHEET	5 OF 10