

PALM BEACH OUTLETS

A COMMERCIAL PLANNED DEVELOPMENT

LYING IN SECTIONS 17, 18 & 19 TOWNSHIP 43 SOUTH, RANGE 43 EAST,
CITY OF WEST PALM BEACH, PALM BEACH COUNTY, FLORIDA, AND A REPLAT
OF A PORTION OF LOT 1, BLOCK 11, FLAMING WATERS COUNTRY CLUB,
PLAT BOOK 28 PAGE 23

SHEET 3 OF 3

THIS INSTRUMENT PREPARED BY
JOHN E. PHILLIPS III, P.S.M. 4826

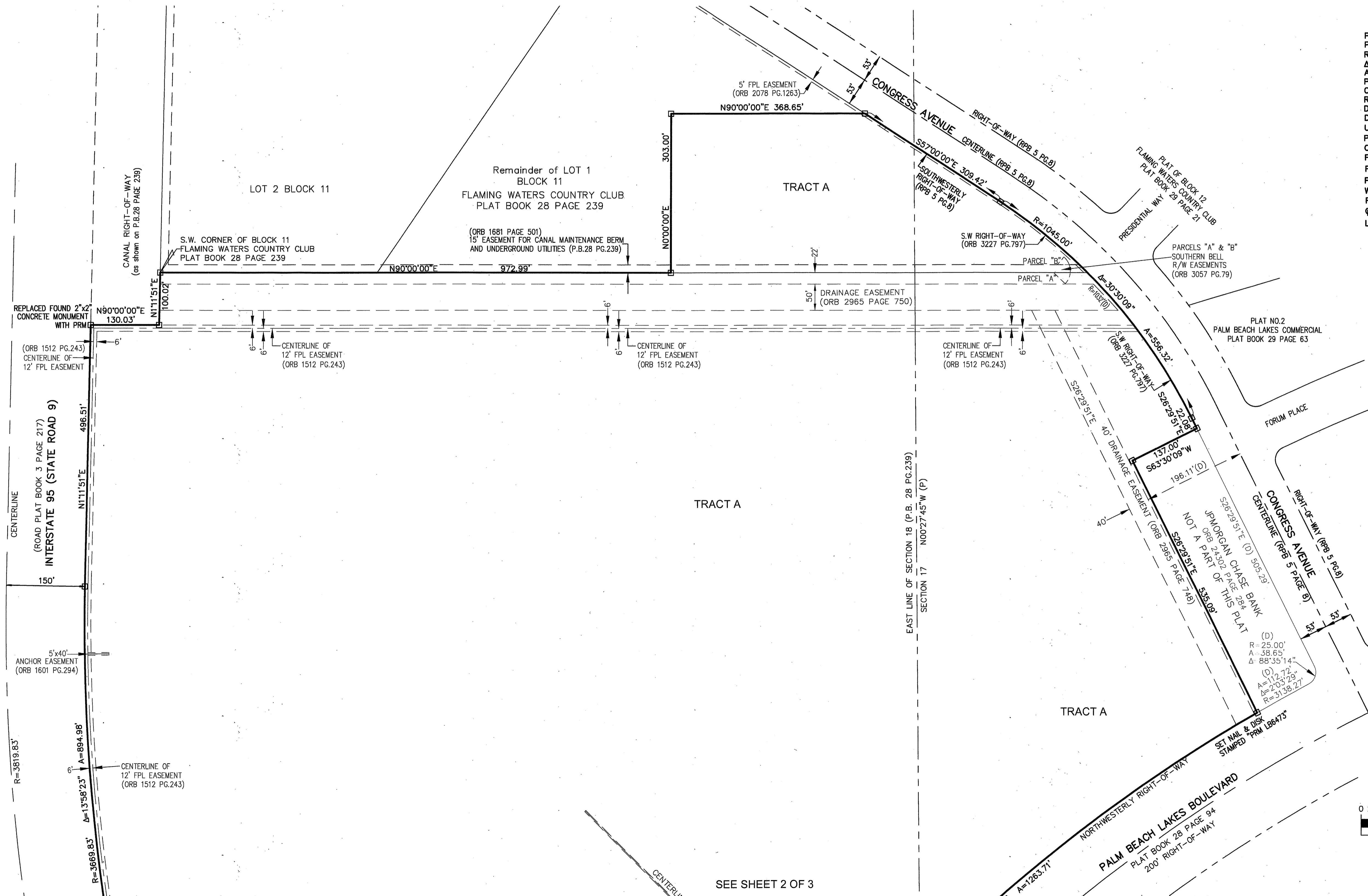
BROWN & PHILLIPS, INC.
PROFESSIONAL SURVEYING SERVICES

CERTIFICATE OF AUTHORIZATION # LB 6473
1860 OLD KEECHOBEE ROAD, SUITE 509
WEST PALM BEACH, FLORIDA 33409 561-615-3988, 615-3991 FAX
561-615-3988, 615-3991 FAX E-Mail: info@brown-phillips.com

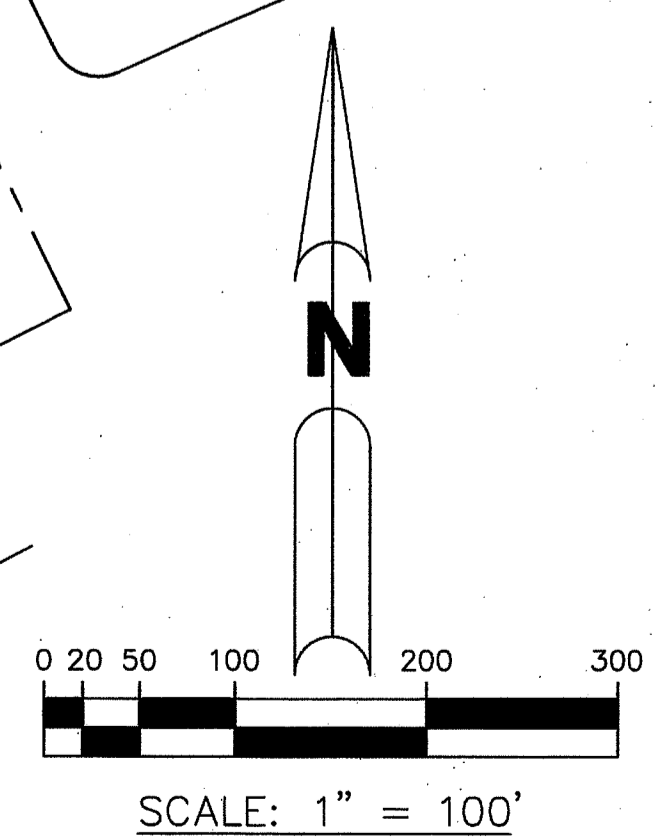
100

ABBREVIATIONS

- P.O.B. - POINT OF BEGINNING
- P.O.C. - POINT OF COMMENCEMENT
- R - RADIUS
- Δ - CENTRAL ANGLE
- A - ARC LENGTH
- P.B. - PLAT BOOK
- ORB - OFFICIAL RECORD BOOK
- RFB - ROAD PLAT BOOK
- D.B. - DEED BOOK
- D.E. - DRAINAGE EASEMENT
- U.E. - UTILITY EASEMENT
- PRM - PERMANENT REFERENCE MONUMENT
- C.M. - CONCRETE MONUMENT
- FND. - FOUND
- FPL - FLORIDA POWER & LIGHT COMPANY
- PBCo - PALM BEACH COUNTY
- WPB - CITY OF WEST PALM BEACH
- R/W - RIGHT-OF-WAY
- ℄ - CENTERLINE
- LB - LICENSED BUSINESS



SEE SHEET 2 OF 3



SHEET 3 OF 3
JOB No.11-042