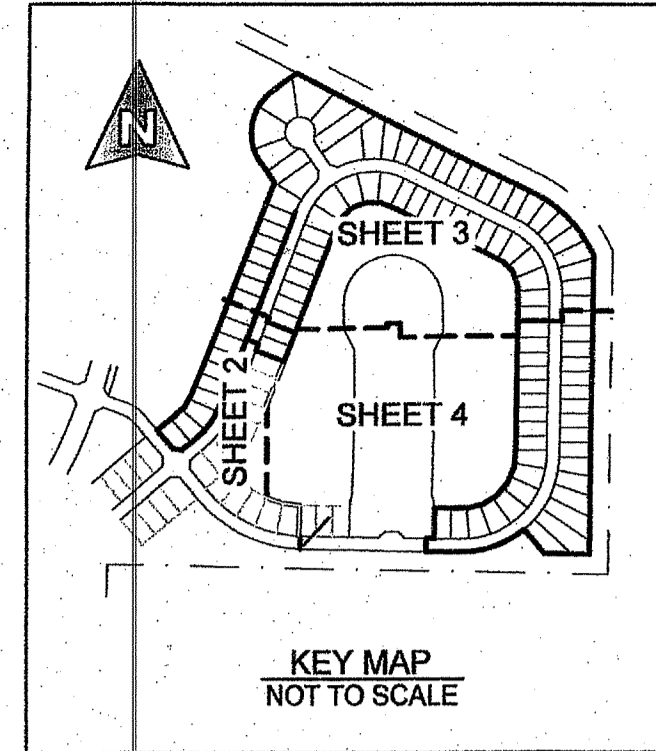


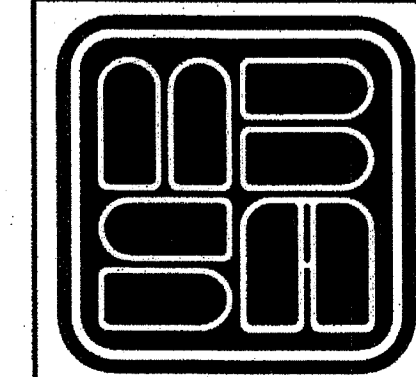
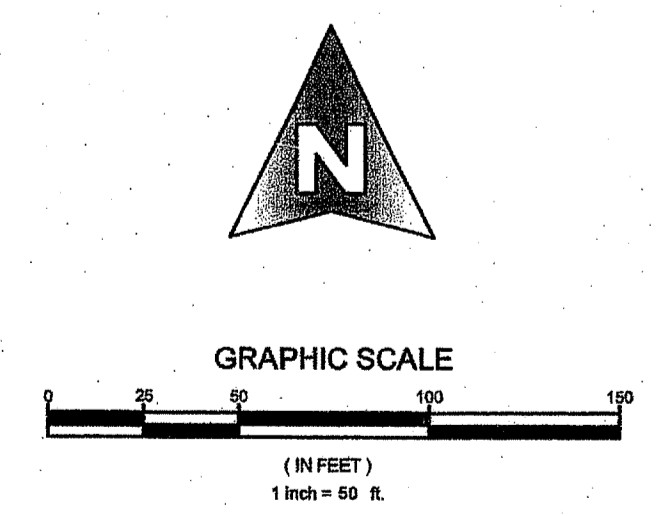
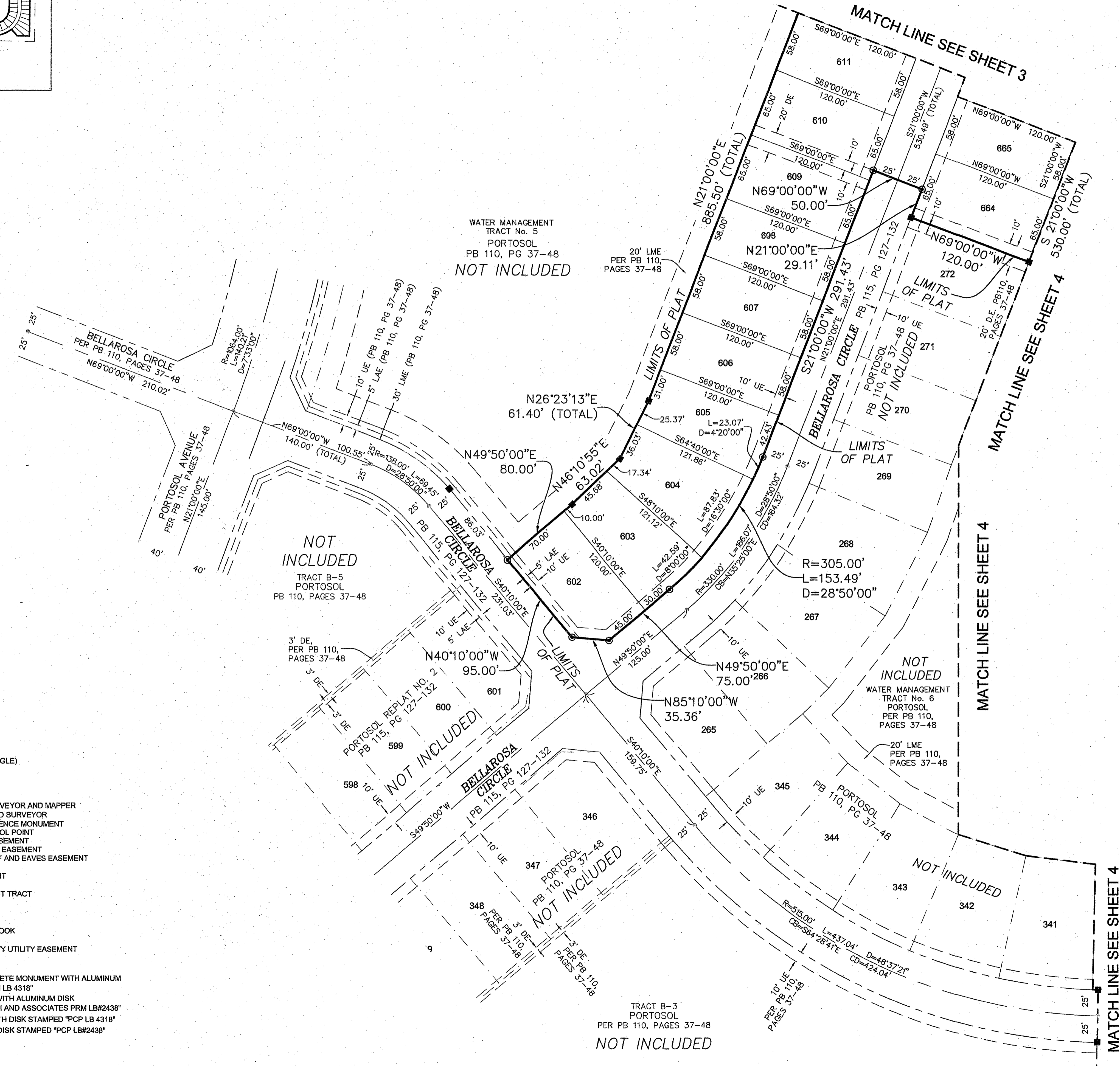
# PORTOSOL REPLAT NO. 3

LYING IN SECTION 24, TOWNSHIP 43 SOUTH RANGE 41 EAST,  
VILLAGE OF ROYAL PALM BEACH, PALM BEACH COUNTY, FLORIDA.  
BEING A REPLAT OF PHASE - B2, PORTOSOL REPLAT NO. 2, AS RECORDED IN PLAT BOOK 115,  
PAGES 127 THROUGH 132, PUBLIC RECORDS OF PALM BEACH COUNTY, FLORIDA,  
AUGUST 20, 2012

COUNTY OF PALM BEACH )  
STATE OF FLORIDA ) SS  
THIS PLAT WAS FILED FOR RECORD AT )  
M. THIS ) DAY OF )  
2012, AND DULY )  
RECORDED IN PLAT BOOK NO. )  
ON PAGE ) THRU )  
SHARON R. BOCK,  
CLERK AND COMPTROLLER  
BY: \_\_\_\_\_, D.C.



- LEGEND:**
- D = DELTA (CENTRAL ANGLE)
  - L = LENGTH
  - R = RADIUS
  - CB = CHORD BEARING
  - CD = CHORD DISTANCE
  - PSM = PROFESSIONAL SURVEYOR AND MAPPER
  - PLS = PROFESSIONAL LAND SURVEYOR
  - PRM = PERMANENT REFERENCE MONUMENT
  - PCP = PERMANENT CONTROL POINT
  - LAE = LIMITED ACCESS EASEMENT
  - LME = LAKE MAINTENANCE EASEMENT
  - MREE = MAINTENANCE ROOF AND EAVES EASEMENT
  - UE = UTILITY EASEMENT
  - DE = DRAINAGE EASEMENT
  - OS = OPEN SPACE
  - WMT = WATER MANAGEMENT TRACT
  - (R) = RADIAL
  - (NR) = NON-RADIAL
  - PB = PLAT BOOK
  - ORB = OFFICIAL RECORD BOOK
  - PG = PAGE
  - P.B.C.U.E. = PALM BEACH COUNTY UTILITY EASEMENT
  - P.K. = PARKER KALON
  - SF = SINGLE FAMILY
  - = FOUND 4"x4" CONCRETE MONUMENT WITH ALUMINUM DISK STAMPED "PRM LB 4318"
  - = SET 1/2" IRON ROD WITH ALUMINUM DISK STAMPED "SCHORAH AND ASSOCIATES PRM LB#2438"
  - = FOUND P.K. NAIL WITH DISK STAMPED "PCP LB 4318"
  - = SET P.K. NAIL WITH DISK STAMPED "PCP LB#2438"



**MICHAEL B. SCHORAH & ASSOCIATES, INC.**  
1850 FOREST HILL BLVD., SUITE 208  
WEST PALM BEACH, FLORIDA 33408  
EB# 2438 TEL. (561) 968-0080 FAX. (561) 642-9726 LB# 2438