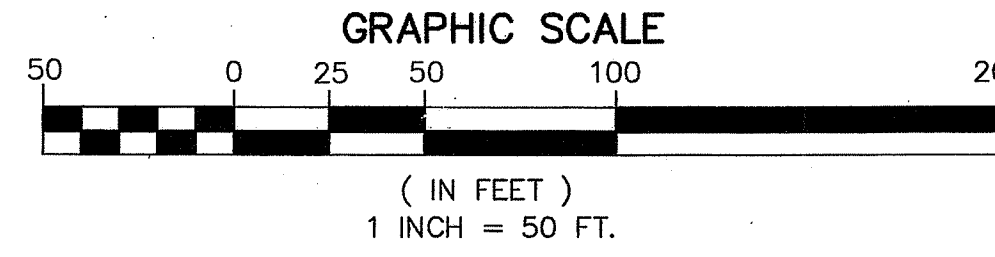


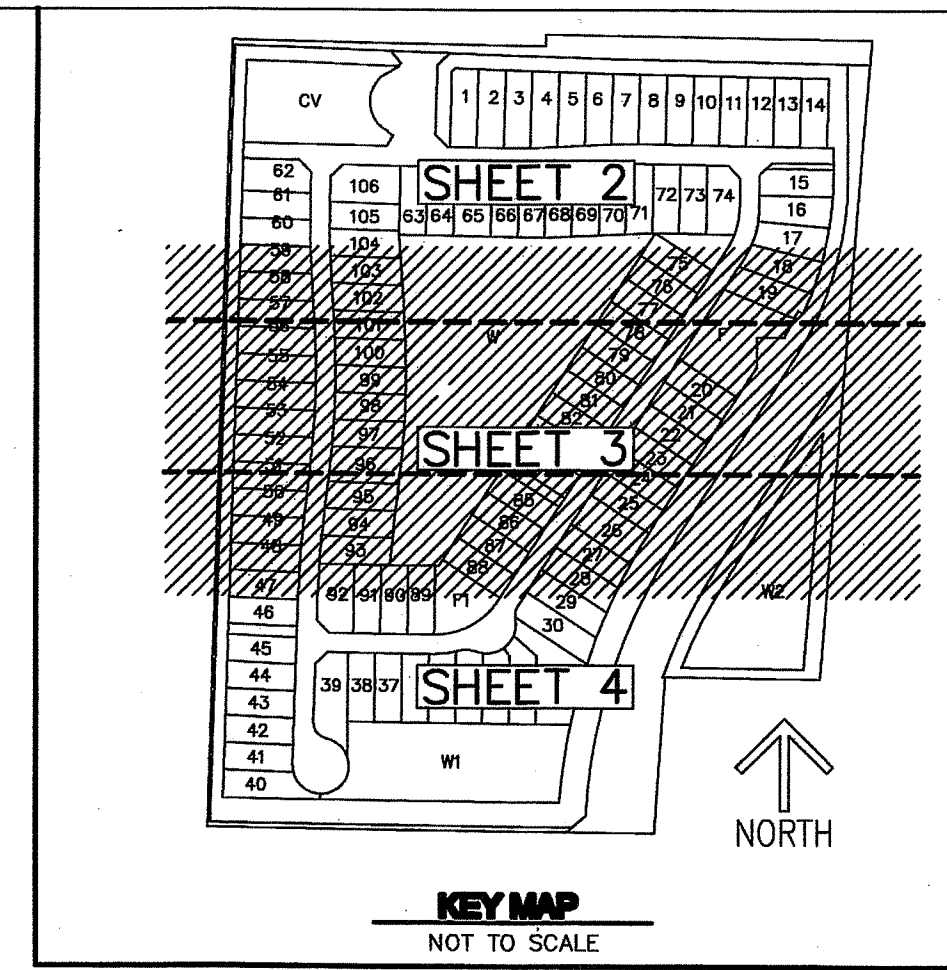
# VISTA LAGO

ABELL PROPERTY, P.U.D.  
A PLANNED UNIT DEVELOPMENT,  
BEING A PORTION OF SECTION 11, TOWNSHIP 45 SOUTH, RANGE 42 EAST, PALM BEACH COUNTY, FLORIDA



THIS INSTRUMENT PREPARED BY  
DAVID P. LINDLEY  
OF  
**CAULFIELD and WHEELER, INC.**  
SURVEYORS - ENGINEERS - PLANNERS  
7301-A WEST PALMETTO PARK ROAD, SUITE 100A  
BOCA RATON, FLORIDA 33433 - (561)392-1991  
JANUARY - 2012

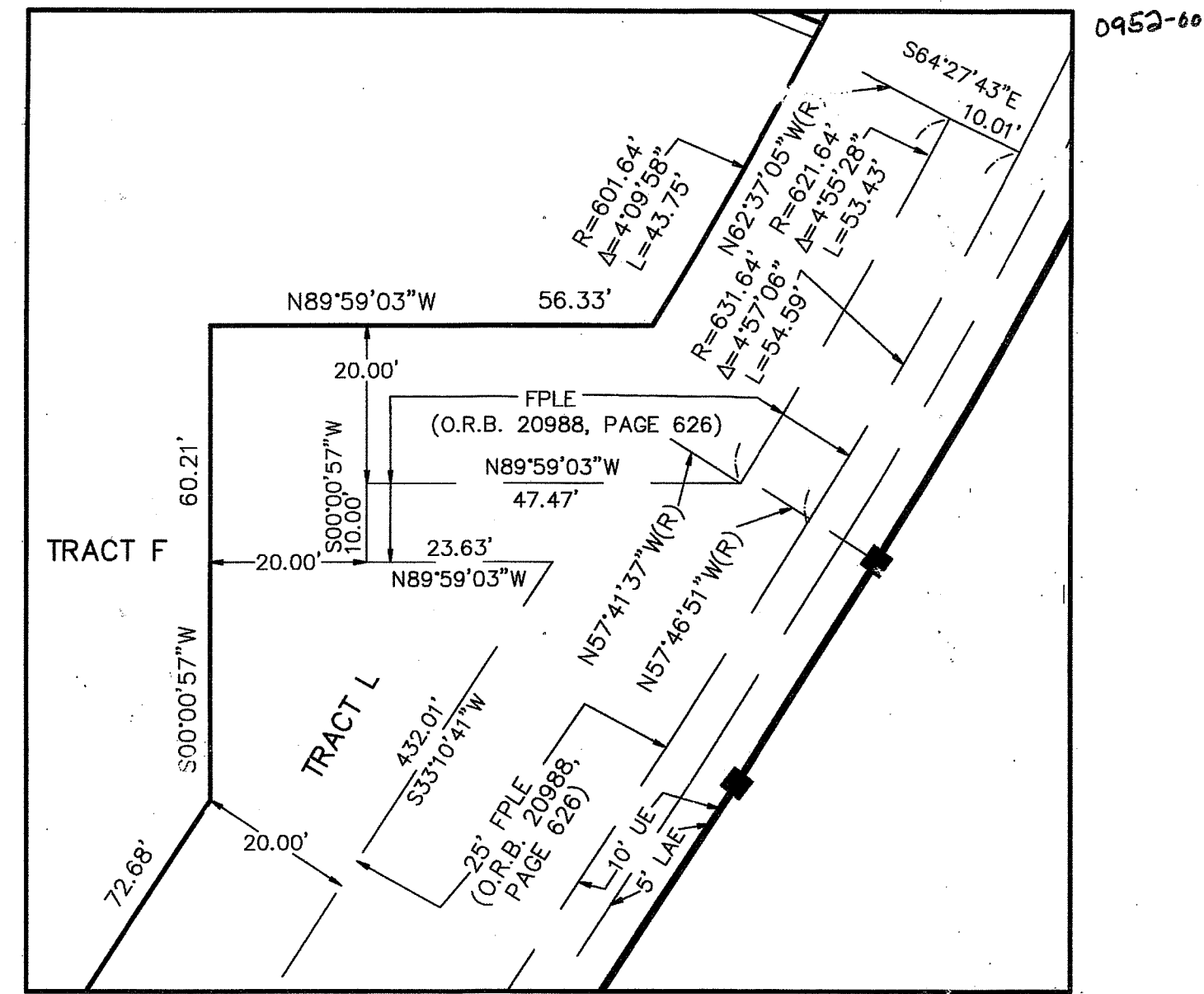
**NOTES**  
**COORDINATES, BEARINGS AND DISTANCES**  
COORDINATES SHOWN ARE GRID  
DATUM = NAD 83 1990 ADJUSTMENT  
ZONE = FLORIDA EAST  
LINEAR UNIT = US SURVEY FEET  
COORDINATE SYSTEM 1983 STATE PLANE  
TRANSVERSE MERCATOR PROJECTION  
ALL DISTANCES ARE GROUND  
SCALE FACTOR = 1.0000341  
GROUND DISTANCE X SCALE FACTOR = GRID DISTANCE  
BEARINGS AS SHOWN HEREON ARE GRID DATUM, NAD 83 1990  
ADJUSTMENT, FLORIDA EAST ZONE.



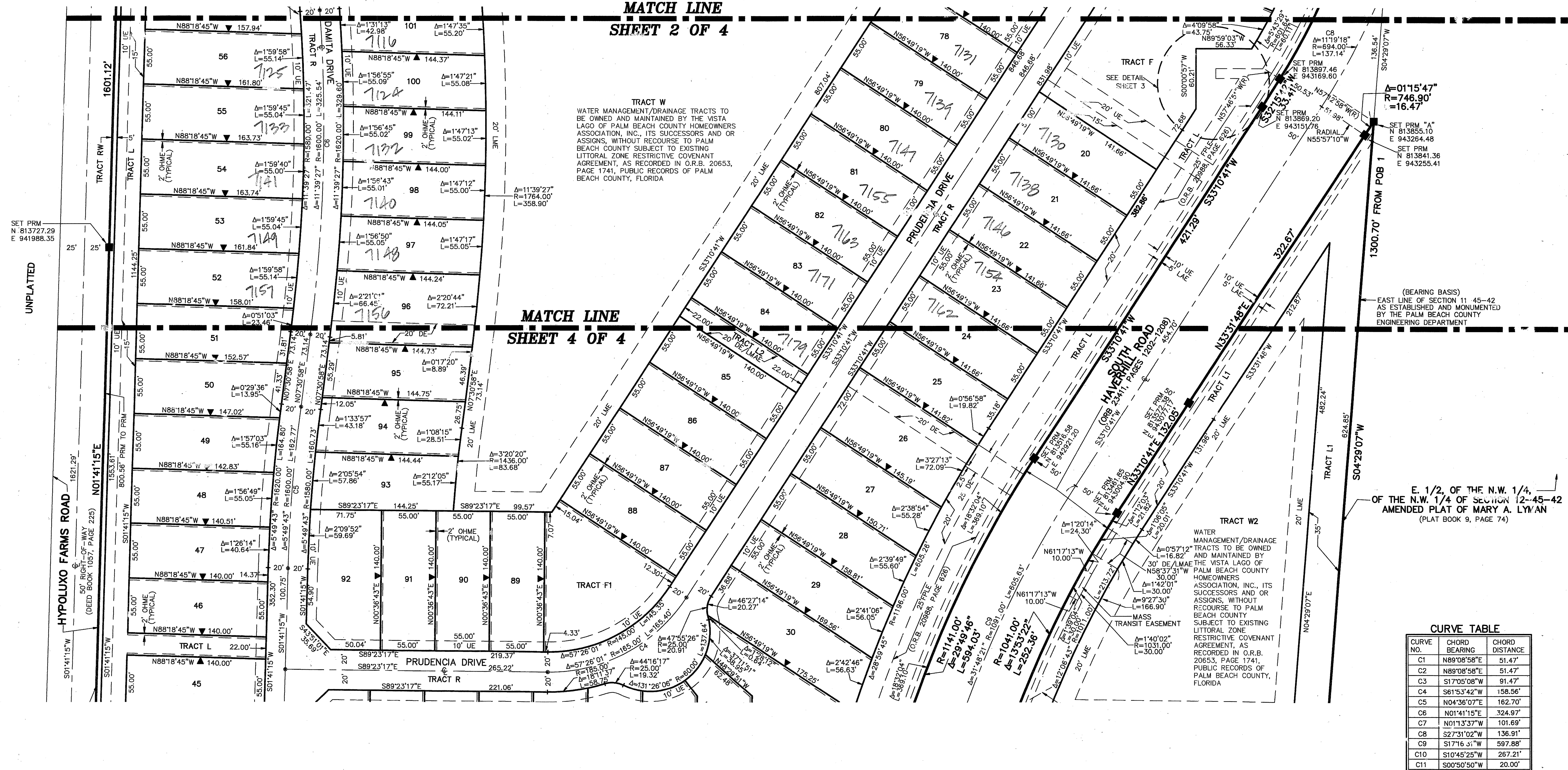
# 107

STATE OF FLORIDA  
COUNTY OF PALM BEACH  
THIS PLAN WAS FILED FOR  
RECORD AT \_\_\_\_\_ M.  
THIS \_\_\_\_\_ DAY OF \_\_\_\_\_  
A.D. 2012 AND DULY RECORDED  
IN PLAT BOOK \_\_\_\_\_ ON  
PAGES \_\_\_\_\_ AND \_\_\_\_\_  
SHARON R. BOCK  
CLERK AND COMPTROLLER  
BY: \_\_\_\_\_  
DEPUTY CLERK

**SHEET 3 OF 4**



**DETAIL 1"=20'**



**TRACT W**  
WATER MANAGEMENT/DRAINAGE TRACTS TO BE OWNED AND MAINTAINED BY THE VISTA LAGO OF PALM BEACH COUNTY HOMEOWNERS ASSOCIATION, INC., ITS SUCCESSORS AND OR ASSIGNS, WITHOUT RECOURSE TO PALM BEACH COUNTY SUBJECT TO EXISTING LITTORAL ZONE RESTRICTIVE COVENANT AGREEMENT, AS RECORDED IN O.R.B. 20653, PAGE 1741, PUBLIC RECORDS OF PALM BEACH COUNTY, FLORIDA

**TRACT W2**  
WATER MANAGEMENT/DRAINAGE TRACTS TO BE OWNED AND MAINTAINED BY THE VISTA LAGO OF PALM BEACH COUNTY HOMEOWNERS ASSOCIATION, INC., ITS SUCCESSORS AND OR ASSIGNS, WITHOUT RECOURSE TO PALM BEACH COUNTY SUBJECT TO EXISTING LITTORAL ZONE RESTRICTIVE COVENANT AGREEMENT, AS RECORDED IN O.R.B. 20653, PAGE 1741, PUBLIC RECORDS OF PALM BEACH COUNTY, FLORIDA

(BEARING BASIS)  
EAST LINE OF SECTION 11 45-42  
AS ESTABLISHED AND MONUMENTED  
BY THE PALM BEACH COUNTY  
ENGINEERING DEPARTMENT

E. 1/2, OF THE N.W. 1/4,  
OF THE N.W. 1/4 OF SECTION 12-45-42  
AMENDED PLAT OF MARY A. LYMAN  
(PLAT BOOK 9, PAGE 74)

**CURVE TABLE**

CURVE NO.	CHORD BEARING	CHORD DISTANCE
C1	N89°08'58"E	51.47'
C2	N89°08'58"E	51.47'
C3	S17°05'08"W	91.47'
C4	S61°53'42"W	158.56'
C5	N04°36'07"E	162.70'
C6	N01°11'15"E	324.97'
C7	N01°13'37"W	101.69'
C8	S27°31'02"W	136.91'
C9	S17°16'31"W	597.88'
C10	S10°45'25"W	267.21'
C11	S00°50'50"W	20.00'