

112

# AMELIA ESTATES

A PARCEL OF LAND LOCATED IN LOT 8, BLOCK 6 OF SECTION 42  
OF THE HIATUS BETWEEN  
TOWNSHIP 43 SOUTH & 44 SOUTH, RANGE 37 EAST,  
CITY OF BELLE GLADE, PALM BEACH COUNTY, FLORIDA

SHEET 2 OF 2

## S.R. 715 S.W. 16th STREET

S29°25'38"W 597.39'  
WEST LINE OF LOT 8, BLOCK 6

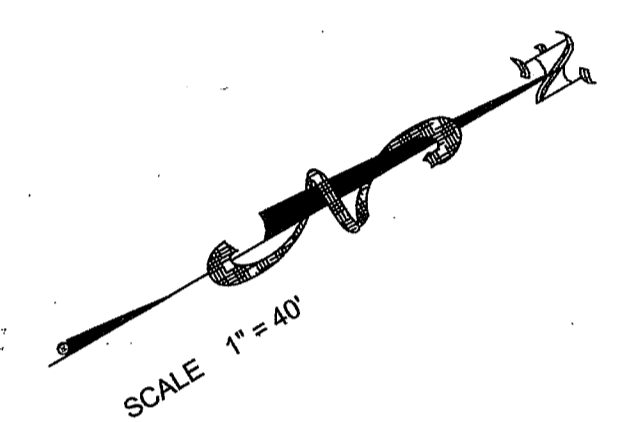
P.O.C. NORTHWEST CORNER OF LOT 8 BLOCK 6  
P.O.C. UTILITY & ROADWAY EASEMENT

COUNTY OF PALM BEACH  
STATE OF FLORIDA

THIS PLAT WAS FILED FOR RECORD AT \_\_\_\_ M.  
THIS \_\_\_\_ DAY OF \_\_\_\_  
A.D. 2013 AND DULY RECORDED IN PLAT BOOK  
\_\_\_\_ ON PAGES \_\_\_\_ THRU \_\_\_\_

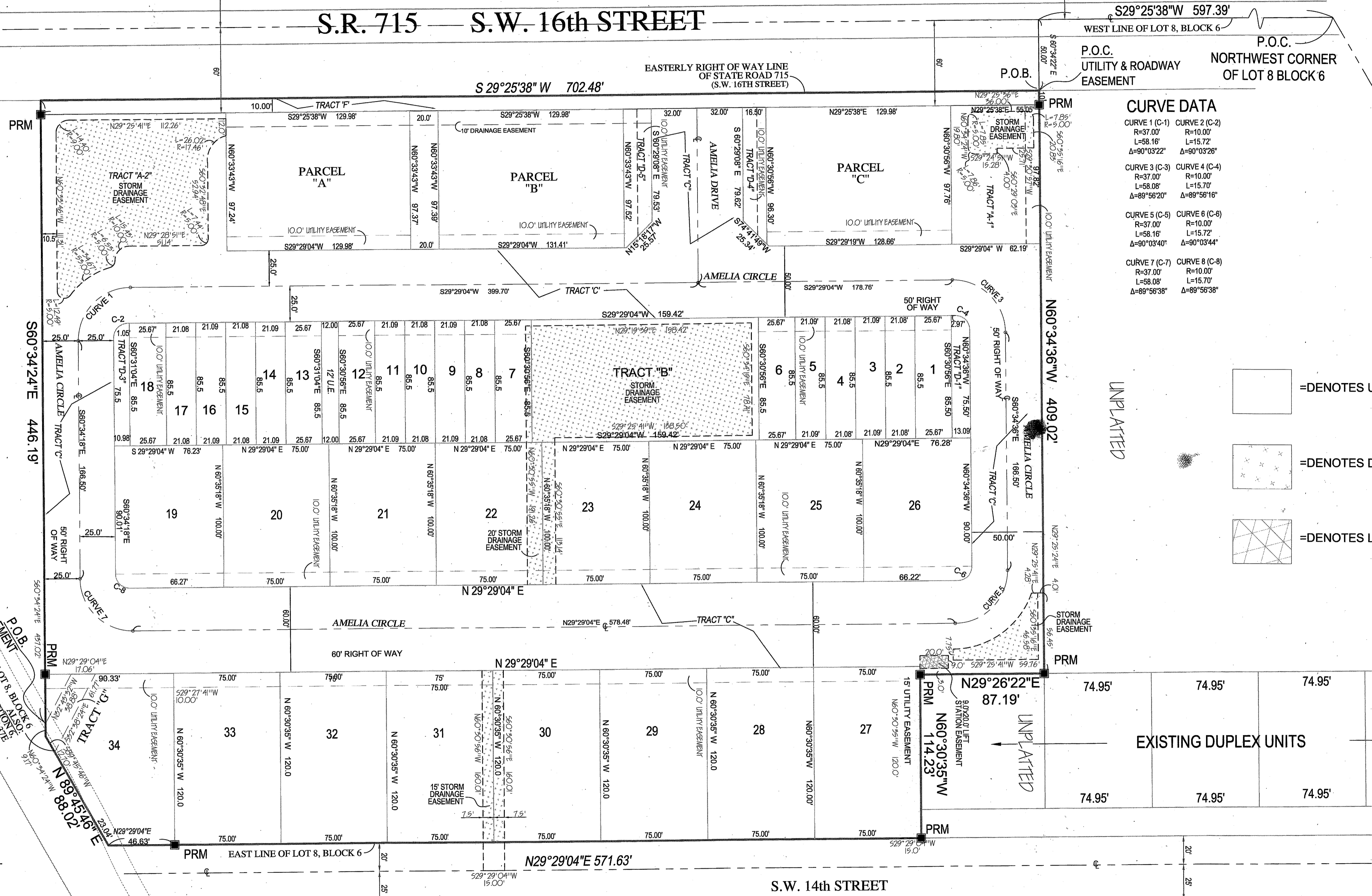
SHARON R. BOCK  
CLERK AND COMPTROLLER

BY: \_\_\_\_\_ D.C.



TOP OF BANK  
EDGE OF WATER  
DRAINAGE EASEMENT  
SOUTH LINE OF LOT 8, BLOCK 6  
NORTH LINE OF SECTION 42  
TOWNSHIP 43S, RANGE 37E

- Legend:**
- BM = BENCH MARK
  - CL = CENTER LINE
  - CM = CONCRETE MONUMENT
  - DE = DRAINAGE EASEMENT
  - DH = DRILL HOLE
  - E = EAST
  - EL = ELEVATION
  - F = FOUND
  - LB = LICENSE BUSINESS
  - L = LENGTH OF CURVE
  - N = NORTH
  - ORB = OFFICIAL RECORD BOOK
  - PB = PLAT BOOK
  - PC = POINT OF CURVE
  - PCP = PERMANENT CONTROL POINT
  - PG = PAGE
  - POB = POINT OF BEGINNING
  - POC = POINT OF COMMENCEMENT
  - PRM = PERMANENT REFERENCE MONUMENT
  - PSM = PROFESSIONAL SURVEYOR & MAPPER
  - R = RADIUS
  - RM = REFERENCE MONUMENT
  - S = SOUTH
  - U.E. = UTILITY EASEMENT
  - W = WEST
  - Δ = CENTRAL ANGLE
  - = BLOCK
  - L.A.E. = LIMITED ACCESS EASEMENT
  - TAN. = TANGENT



### CURVE DATA

CURVE 1 (C-1) R=37.00 L=58.16' Δ=90°03'22"	CURVE 2 (C-2) R=10.00' L=15.72' Δ=90°03'26"
CURVE 3 (C-3) R=37.00' L=58.08' Δ=89°56'20"	CURVE 4 (C-4) R=10.00' L=15.70' Δ=89°56'16"
CURVE 5 (C-5) R=37.00' L=58.16' Δ=90°03'40"	CURVE 6 (C-6) R=10.00' L=15.72' Δ=90°03'44"
CURVE 7 (C-7) R=37.00' L=58.08' Δ=89°56'38"	CURVE 8 (C-8) R=10.00' L=15.70' Δ=89°56'38"

- = DENOTES UTILITY EASEMENT
- = DENOTES DRAINAGE EASEMENT
- = DENOTES LIFT STATION EASEMENT

UNPLATTED

EXISTING DUPLEX UNITS

PLATTED LAKE SHORES  
PLAT BOOK 24 PAGE 157

**COMPASS SURVEYING**  
WWW.COMPASSSURVEYING.NET

6250 N. MILITARY TRAIL, SUITE 102  
WEST PALM BEACH, FL 33407  
PHONE (561) 840-4800  
FACSIMILE (561) 840-0576

LB #7463