

PLAT POSITION AND ORIENTATION

- COORDINATE SYSTEM: NATIONAL GEODETIC SURVEY; STATE PLANE TRANSVERSE MERCATOR PROJECTION
- ZONE: FLORIDA EAST
- HORIZONTAL DATUM: NORTH AMERICAN DATUM OF 1983, 1990 ADJUSTMENT(NAD83/90)
- BEARINGS SHOWN HEREON ARE STATE PLANE BEARINGS (GRID) AND ARE REFERENCED TO A BEARING OF SOUTH 00°48'04" WEST ALONG THE EAST LINE OF SECTION 35, TOWNSHIP 41 SOUTH, RANGE 42 EAST
- DISTANCES SHOWN HEREON ARE GROUND DISTANCES, UNLESS OTHERWISE NOTED.
- LINEAR UNITS: U.S. SURVEY FOOT
- SCALE FACTOR: 1.000040237
- GROUND DISTANCE X SCALE FACTOR = GRID DISTANCE

MANDEL JCC - MEYER ACADEMY

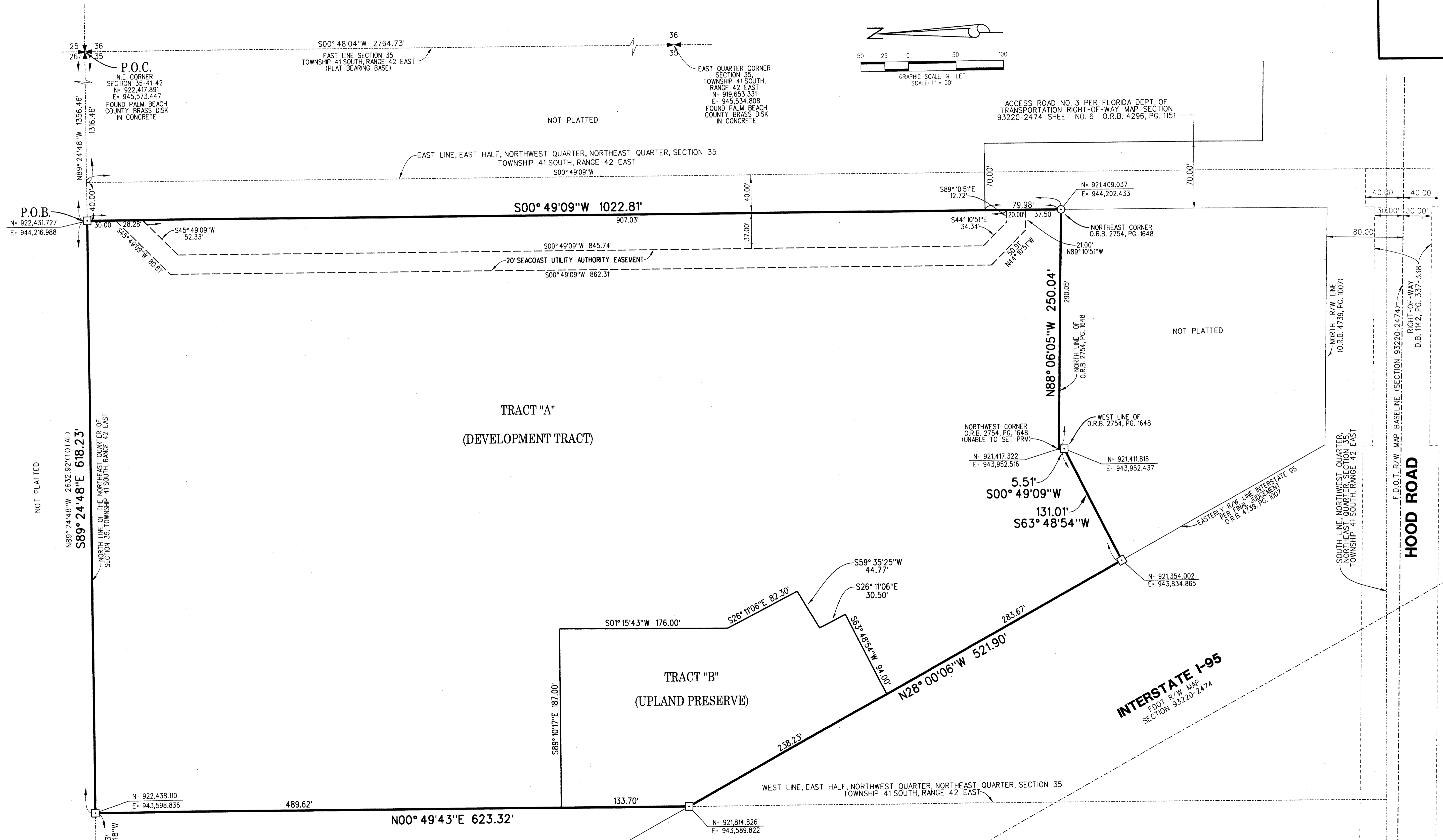
A PARCEL OF LAND SITUATE IN SECTION 35, TOWNSHIP 41 SOUTH, RANGE 42 EAST, CITY OF PALM BEACH GARDENS, PALM BEACH COUNTY, FLORIDA

JANUARY 2013 SHEET 2 OF 2

ABBREVIATION:

- D.B. = DEED BOOK
- ELEV. = ELEVATION
- F.D.D.T. = FLORIDA DEPARTMENT OF TRANSPORTATION
- L.A.E. = LIMITED ACCESS EASEMENT
- O.R.B. = OFFICIAL RECORD BOOK
- P.B. = PLAT BOOK
- P.C. = PAGE
- P.O.B. = POINT OF BEGINNING
- P.O.C. = POINT OF COMMENCEMENT
- P.R.M. = PERMANENT REFERENCE MONUMENT
- P.S.M. = PROFESSIONAL SURVEYOR AND MAPPER
- R/W = RIGHT OF WAY
- S.S.E. = SAFE SIGHT EASEMENT
- U.E. = UTILITY EASEMENT

127



- LEGEND:**
- = SET 4"x4" CONCRETE MONUMENT STAMPED "PRM LB 4431" - PERMANENT REFERENCE MONUMENT (P.R.M.), UNLESS OTHERWISE NOTED.
 - = SET MAG NAIL AND DISK STAMPED "PRM LB 4431" - PERMANENT REFERENCE MONUMENT (P.R.M.), UNLESS OTHERWISE NOTED.

AREA TABULATION		
DESCRIPTION	SQUARE FEET	ACRES
TRACT "A"	539,815	12.392
TRACT "B"	52,425	1.204
TOTAL	592,240	13.596

LIDBERG LAND SURVEYING, INC.
 675 West Indiantown Road, Suite 200, Jupiter, Florida 33458 TEL. 561-746-8454

CAD. K:\JUST \ 354142 \ 98-151-306 \ 98-151-306.DGN	REF.	FB.	PG.	JOB	98-151-306
FLD.				DATE	APRIL 2012
OFF. CASASUS				DWG.	D98-151P
CKD. D.C.L.	SHEET	2	OF	2	