

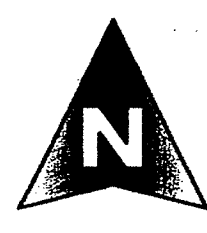
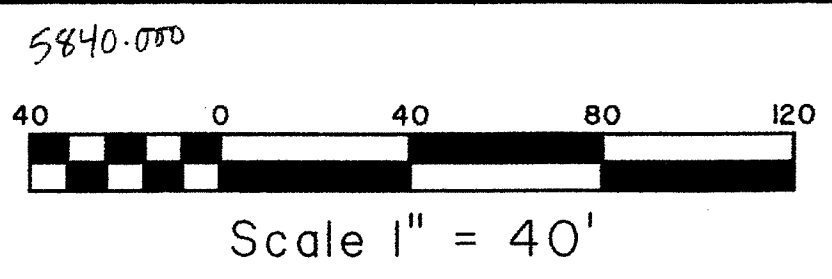
139

COUNTY OF PALM BEACH)
STATE OF FLORIDA) SS
THIS PLAT WAS FILED FOR RECORD AT)
M. THIS) DAY OF)
2013, AND DULY)
RECORDED IN PLAT BOOK NO.)
ON PAGE) THRU)
SHARON R. BOCK,
CLERK AND COMPTROLLER
BY: _____, D.C.

IGLESIA CRISTO MI REDENTOR

LYING IN SECTION 1, TOWNSHIP 44 SOUTH, RANGE 42 EAST, BEING A REPLAT OF
PORTIONS OF TRACTS 5 AND 6, BLOCK 3, PLAT NO. 1 OF PALM BEACH PLANTATIONS (MODEL LAND COMPANY) AS
RECORDED IN PLAT BOOK 10, PAGE 20, PUBLIC RECORDS OF PALM BEACH COUNTY, FLORIDA.

SHEET 3 OF 3 JANUARY, 2013

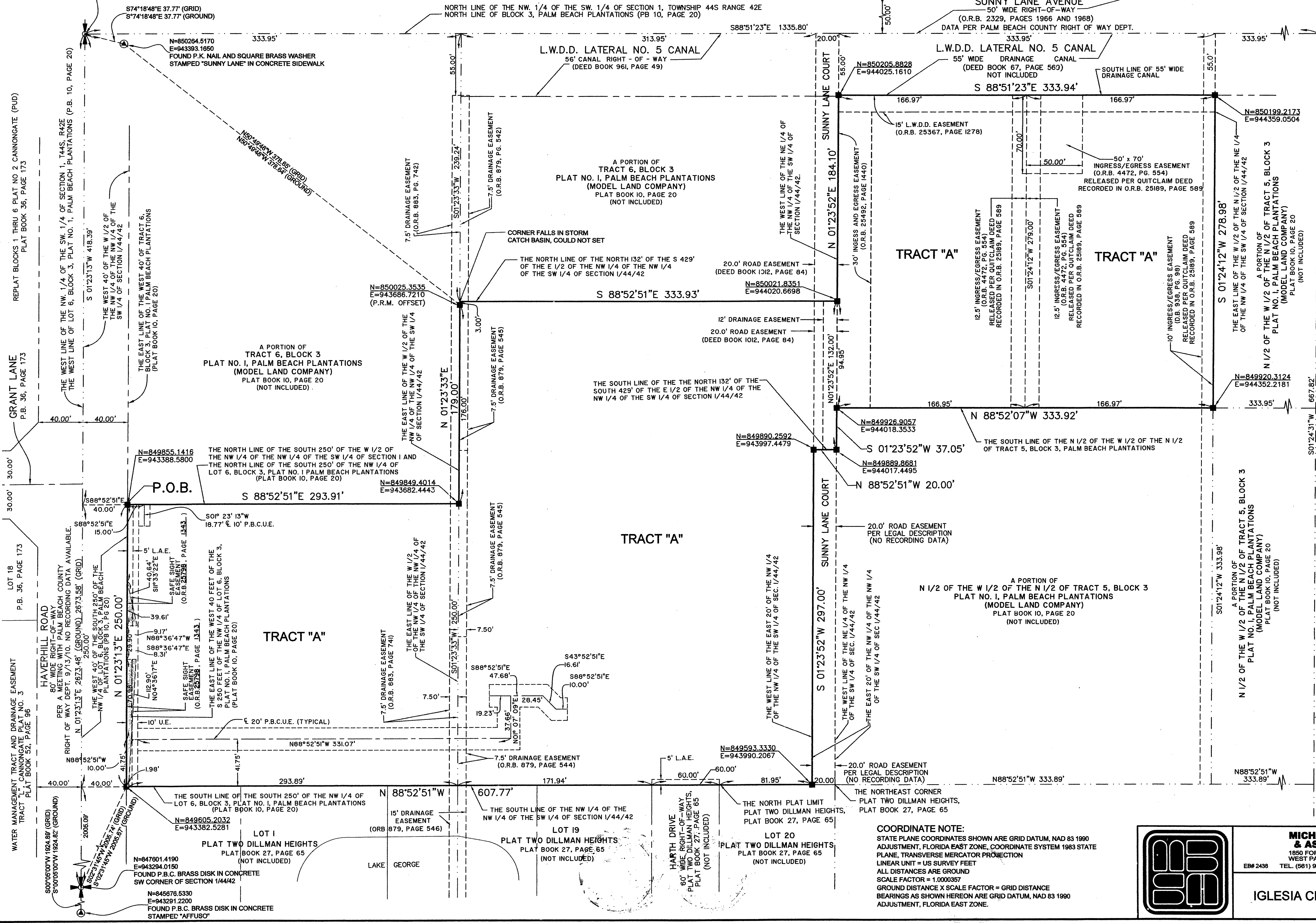


P.O.C.
FOUND P.B.C. BRASS DISK IN CONCRETE
WEST 1/4 CORNER OF SECTION 1/44/42
N=850274.1870
E=943358.7320

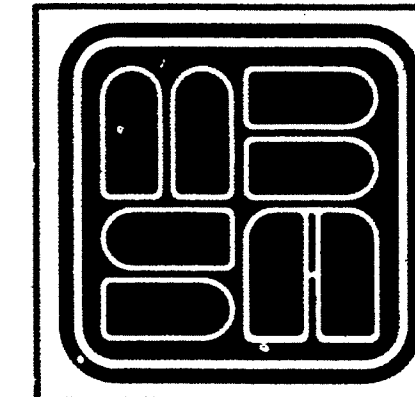
ROYAL PINES
P.B. 27, PAGE 79

SUNNY PALMS VILLAS
P.B. 47, PAGE 44

SUNNY PALMS VILLAS
P.B. 47, PAGE 44



COORDINATE NOTE:
STATE PLANE COORDINATES SHOWN ARE GRID DATUM, NAD 83 1990
ADJUSTMENT, FLORIDA EAST ZONE, COORDINATE SYSTEM 1983 STATE
PLANE, TRANSVERSE MERCATOR PROJECTION
LINEAR UNIT = US SURVEY FEET
ALL DISTANCES ARE GROUND
SCALE FACTOR = 1.0000357
GROUND DISTANCE X SCALE FACTOR = GRID DISTANCE
BEARINGS AS SHOWN HEREON ARE GRID DATUM, NAD 83 1990
ADJUSTMENT, FLORIDA EAST ZONE.



MICHAEL B. SCHORAH & ASSOCIATES, INC.
1850 FOREST HILL BLVD., SUITE 206
WEST PALM BEACH, FLORIDA 33406
E#B 2438 TEL. (561) 968-0060 FAX. (561) 642-9726 LB# 2438
IGLESIA CRISTO MI REDENTOR

SHEET 3 OF 3