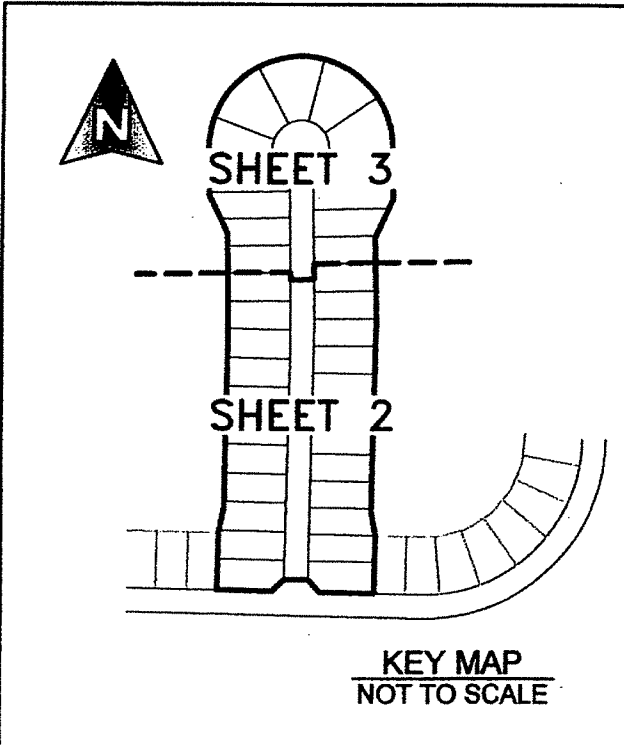


141

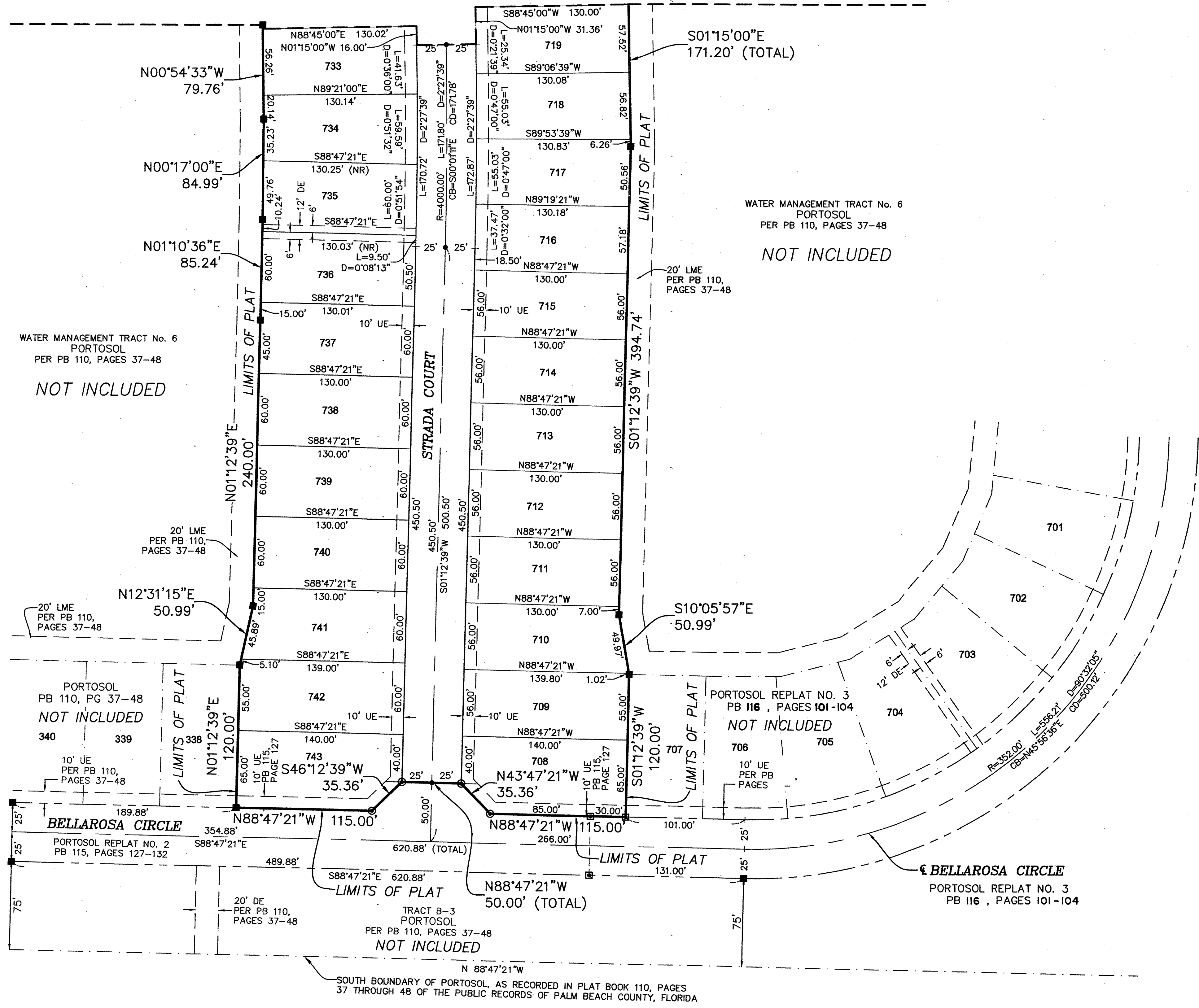
COUNTY OF PALM BEACH)
STATE OF FLORIDA) SS
THIS PLAT WAS FILED FOR RECORD AT)
M. THIS) DAY OF)
RECORDED IN PLAT BOOK NO.)
ON PAGE) THRU)
SHARON R. BOCK,
CLERK AND COMPTROLLER
BY:) D.C.

PORTOSOL REPLAT NO. 4

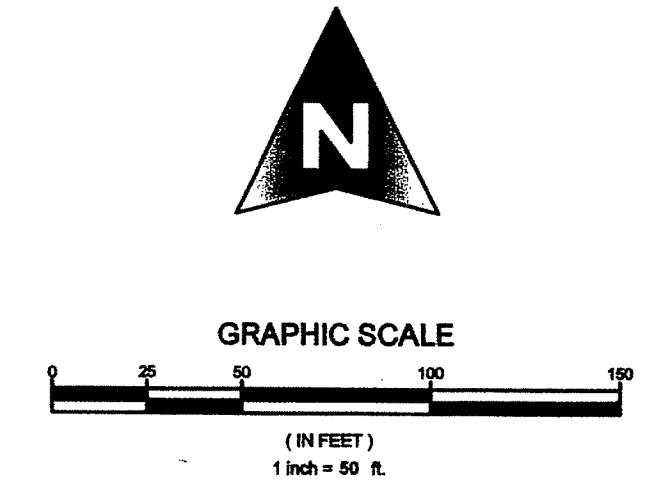
LYING IN SECTION 24, TOWNSHIP 43 SOUTH RANGE 41 EAST,
VILLAGE OF ROYAL PALM BEACH, PALM BEACH COUNTY, FLORIDA.
BEING A REPLAT OF PHASE B3, PORTOSOL REPLAT NO. 2, AS RECORDED IN PLAT BOOK 115,
PAGES 127 THROUGH 132, PUBLIC RECORDS OF PALM BEACH COUNTY, FLORIDA,
JANUARY, 2013



MATCH LINE-SEE SHEET 3



- LEGEND**
- D = DELTA (CENTRAL ANGLE)
 - L = LENGTH
 - R = RADIUS
 - CB = CHORD BEARING
 - CD = CHORD DISTANCE
 - PSM = PROFESSIONAL SURVEYOR AND MAPPER
 - PLS = PROFESSIONAL LAND SURVEYOR
 - PRM = PERMANENT REFERENCE MONUMENT
 - PCP = PERMANENT CONTROL POINT
 - LAE = LIMITED ACCESS EASEMENT
 - LME = LAKE MAINTENANCE EASEMENT
 - MREE = MAINTENANCE ROOF AND EAVES EASEMENT
 - UE = UTILITY EASEMENT
 - DE = DRAINAGE EASEMENT
 - OS = OPEN SPACE
 - WMT = WATER MANAGEMENT TRACT
 - (R) = RADIAL
 - (NR) = NON-RADIAL
 - PB = PLAT BOOK
 - ORB = OFFICIAL RECORD BOOK
 - PG = PAGE
 - P.B.C.U.E. = PALM BEACH COUNTY UTILITY EASEMENT
 - P.K. = PARKER KALON
 - SF = SINGLE FAMILY
 - = FOUND 4"x4" CONCRETE MONUMENT WITH ALUMINUM DISK STAMPED "PRM LB 4318"
 - ⊠ = FOUND 1/2" IRON ROD WITH ALUMINUM DISK STAMPED "SCHORAH AND ASSOCIATES PRM LB#2438"
 - ⊙ = SET 1/2" IRON ROD WITH ALUMINUM DISK STAMPED "SCHORAH AND ASSOCIATES PRM LB#2438"
 - = FOUND P.K. NAIL WITH DISK STAMPED "PCP LB 4318" SET P.K. NAIL WITH DISK STAMPED "PCP LB#2438"
 - = SET P.K. NAIL WITH DISK STAMPED "PCP LB#2438"



SHEET 2 OF 3



MICHAEL B. SCHORAH & ASSOCIATES, INC.
1850 FOREST HILL BLVD., SUITE 208
WEST PALM BEACH, FLORIDA 33406
EB# 2438 TEL. (561) 968-0080 FAX. (561) 642-9726 LB# 2438

PORTOSOL REPLAT NO. 4