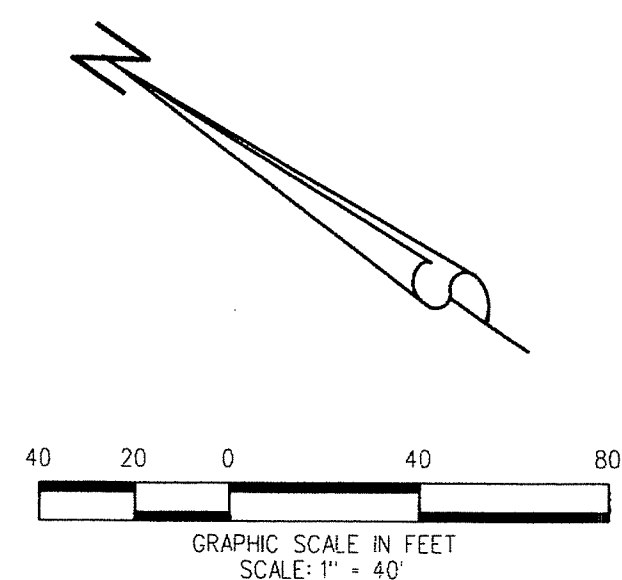
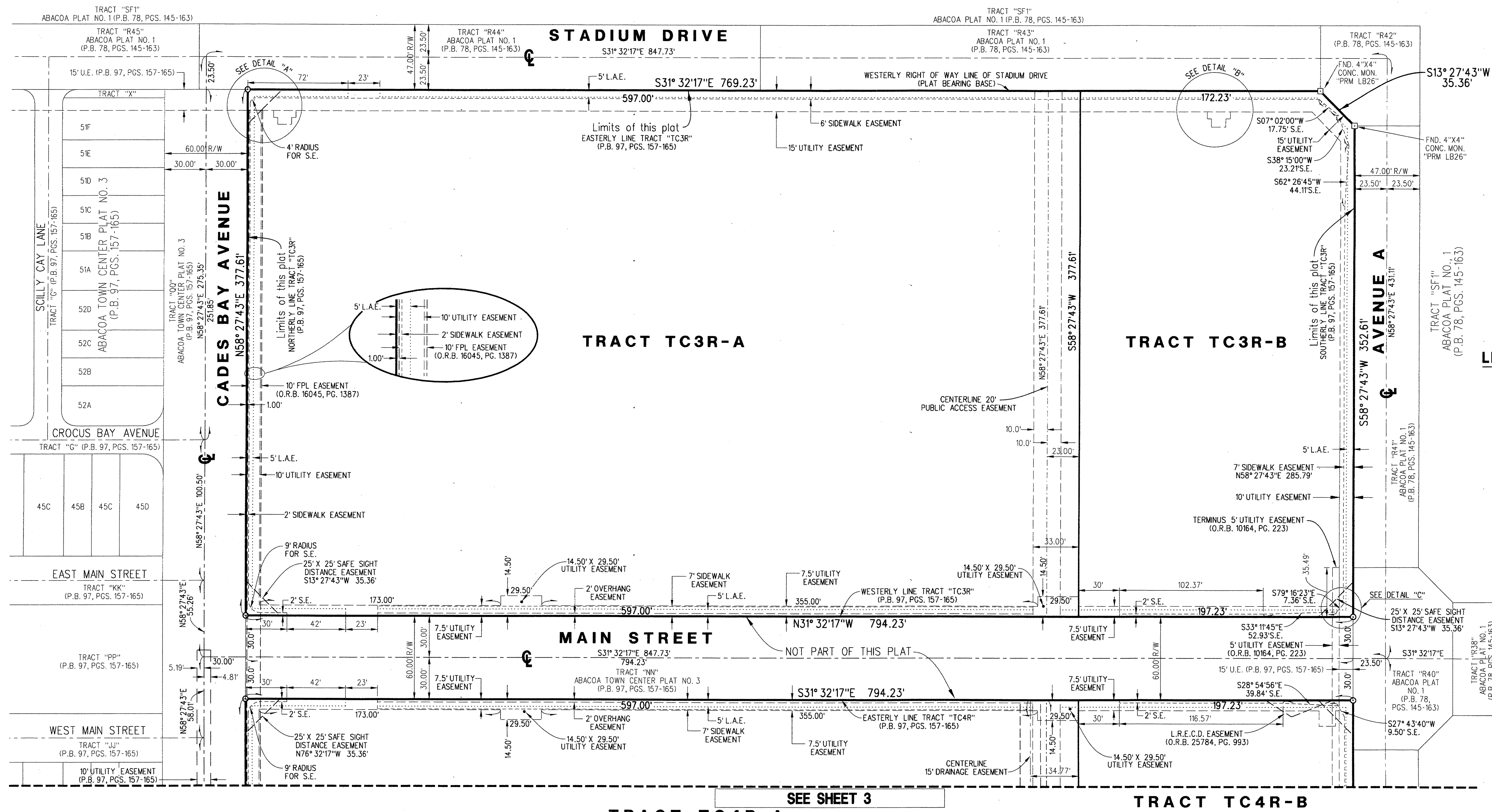


ABACOA TOWN CENTER PLAT NO. 4

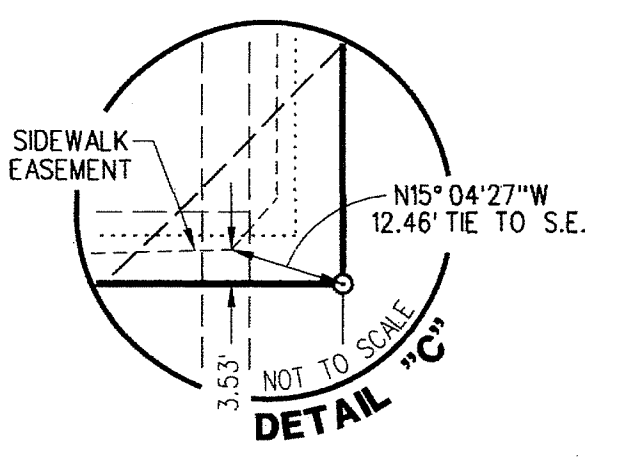
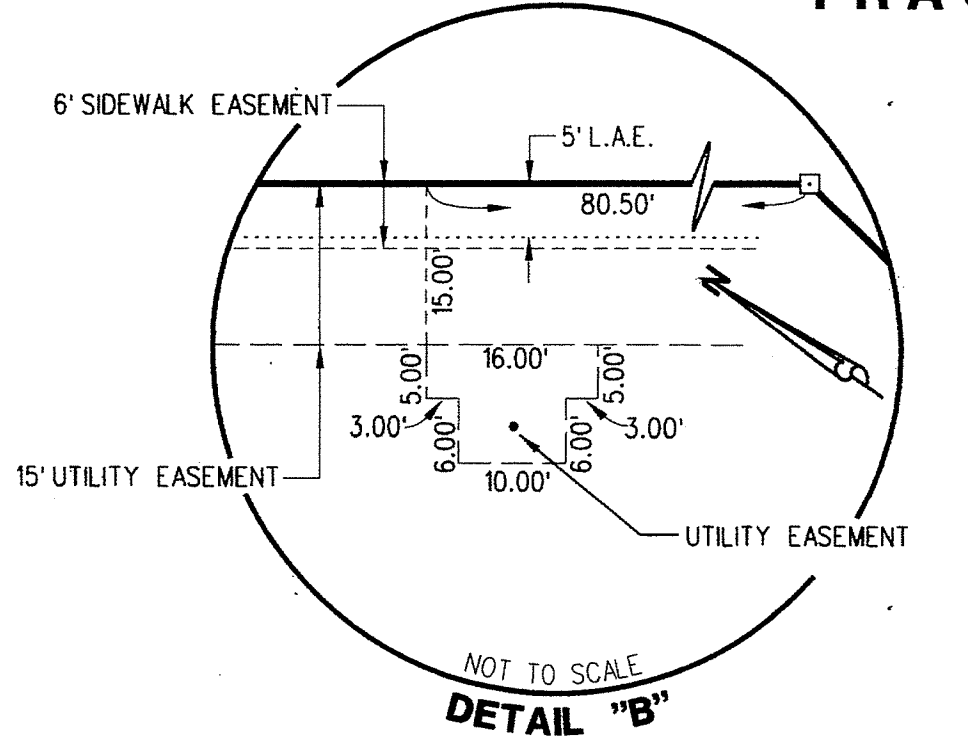
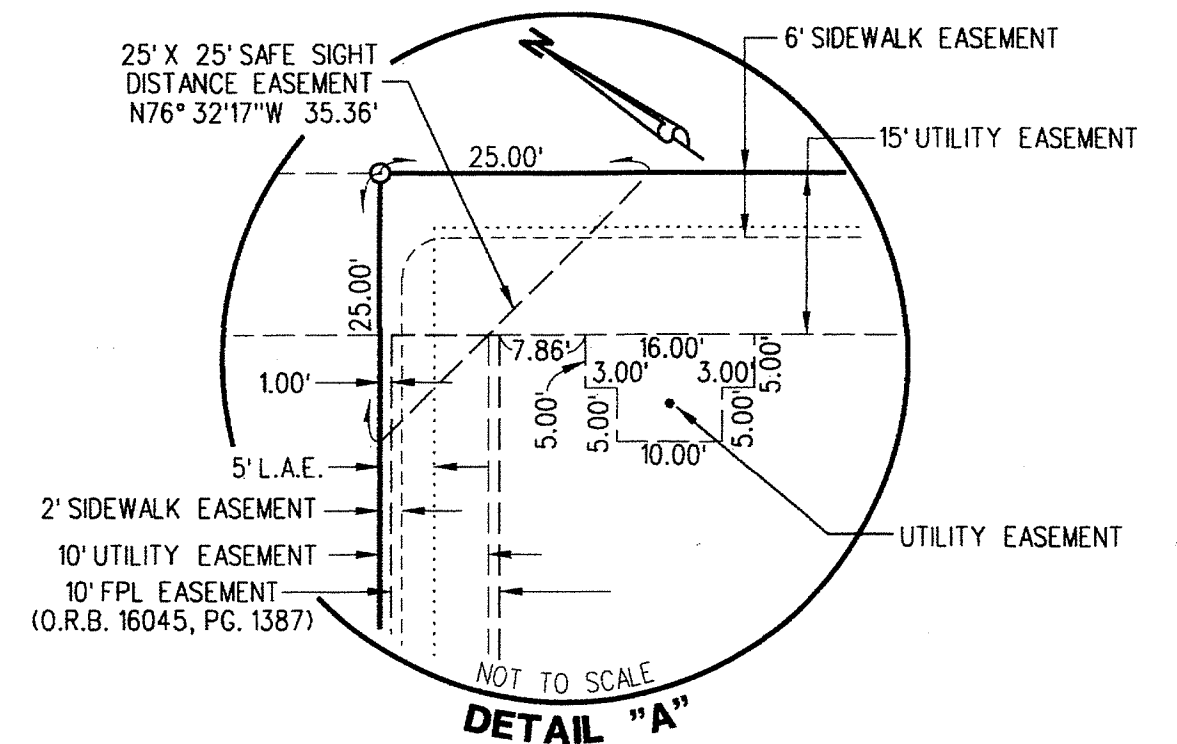
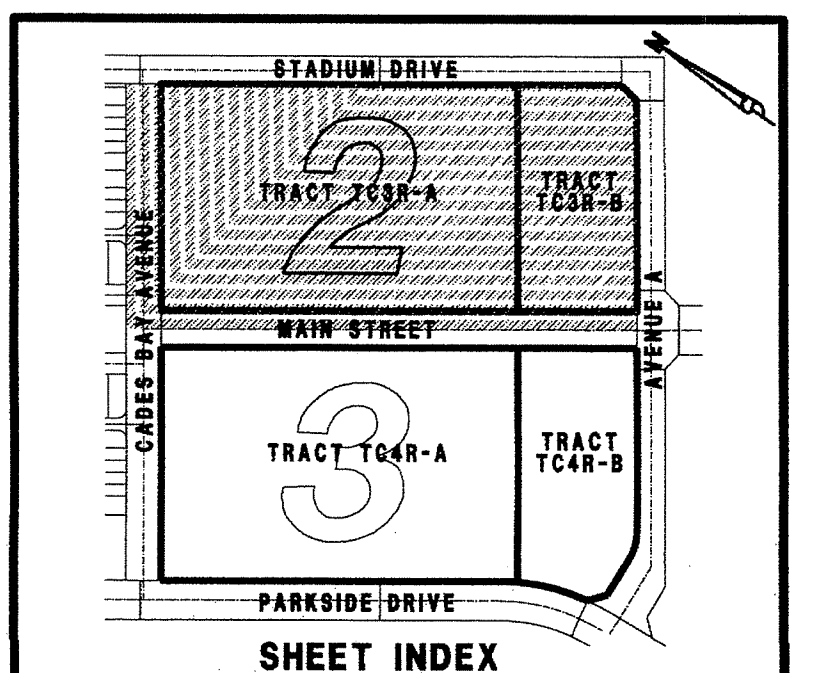
BEING A REPLAT OF TRACTS TC3R AND TC4R OF ABACOA TOWN CENTER PLAT NO. 3,
AS RECORDED IN PLAT BOOK 97, PAGES 157 THROUGH 165, PUBLIC RECORDS OF PALM BEACH COUNTY, FLORIDA.
LYING IN SECTION 23, TOWNSHIP 41 SOUTH, RANGE 42 EAST, TOWN OF JUPITER, PALM BEACH COUNTY, FLORIDA

FEBRUARY 2013 SHEET 2 OF 3



- LEGEND:**
- DENOTES PERMANENT REFERENCE MONUMENT (P.R.M.) SET 4"x4" CONCRETE MONUMENT WITH DISK STAMPED "PRM LB4431" UNLESS OTHERWISE NOTED
 - DENOTES PERMANENT REFERENCE MONUMENT (P.R.M.) SET MAG NAIL & DISK STAMPED "PRM LB4431" UNLESS OTHERWISE NOTED
 - ⊕ DENOTES CENTERLINE OF RIGHT OF WAY

- ABBREVIATIONS:**
- CB = CHORD BEARING
 - CL = CHORD LENGTH
 - CONC. = CONCRETE
 - D = DELTA
 - D.E. = DRAINAGE EASEMENT
 - F.P.L. = FLORIDA POWER & LIGHT
 - I.O. = IRRIGATION QUALITY
 - L = ARC LENGTH
 - L.A.E. = LIMITED ACCESS EASEMENT
 - L.R.E.C.D. = LOXAHATCHEE RIVER ENVIRONMENTAL CONTROL DISTRICT
 - MON. = MONUMENT
 - O.R.B. = OFFICIAL RECORD BOOK
 - P.B. = PLAT BOOK
 - PG. = PAGE
 - P.R.M. = PERMANENT REFERENCE MONUMENT
 - P.S.M. = PROFESSIONAL SURVEYOR AND MAPPER
 - R = RADIUS
 - S.E. = SIDEWALK EASEMENT
 - U.E. = UTILITY EASEMENT



LIDBERG LAND SURVEYING, INC.

75 West Indiantown Road, Suite 200, Jupiter, Florida 33458 TEL. 561-746-8454

CAD. K:\UST \ 234142 \ 97-157 \ 12-072A-306 \ 12-072A-306.DGN	REF.	FB.	PG.	JOB 12-072A-306
FLD.	OFF. R.J.W.	DATE JANUARY 2, 2013		
CKD. D.C.L.	SHEET 2 OF 3	DWG. D12-072PP		