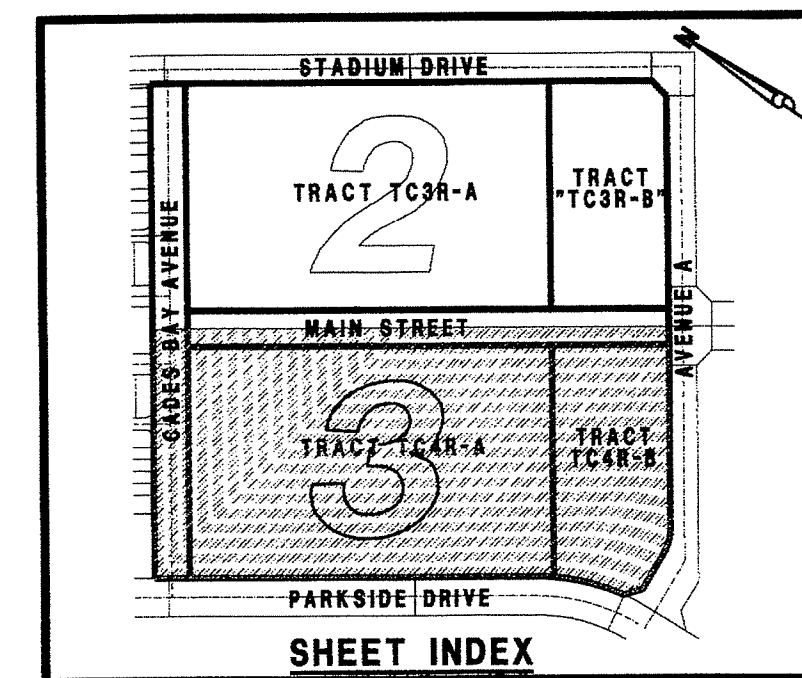


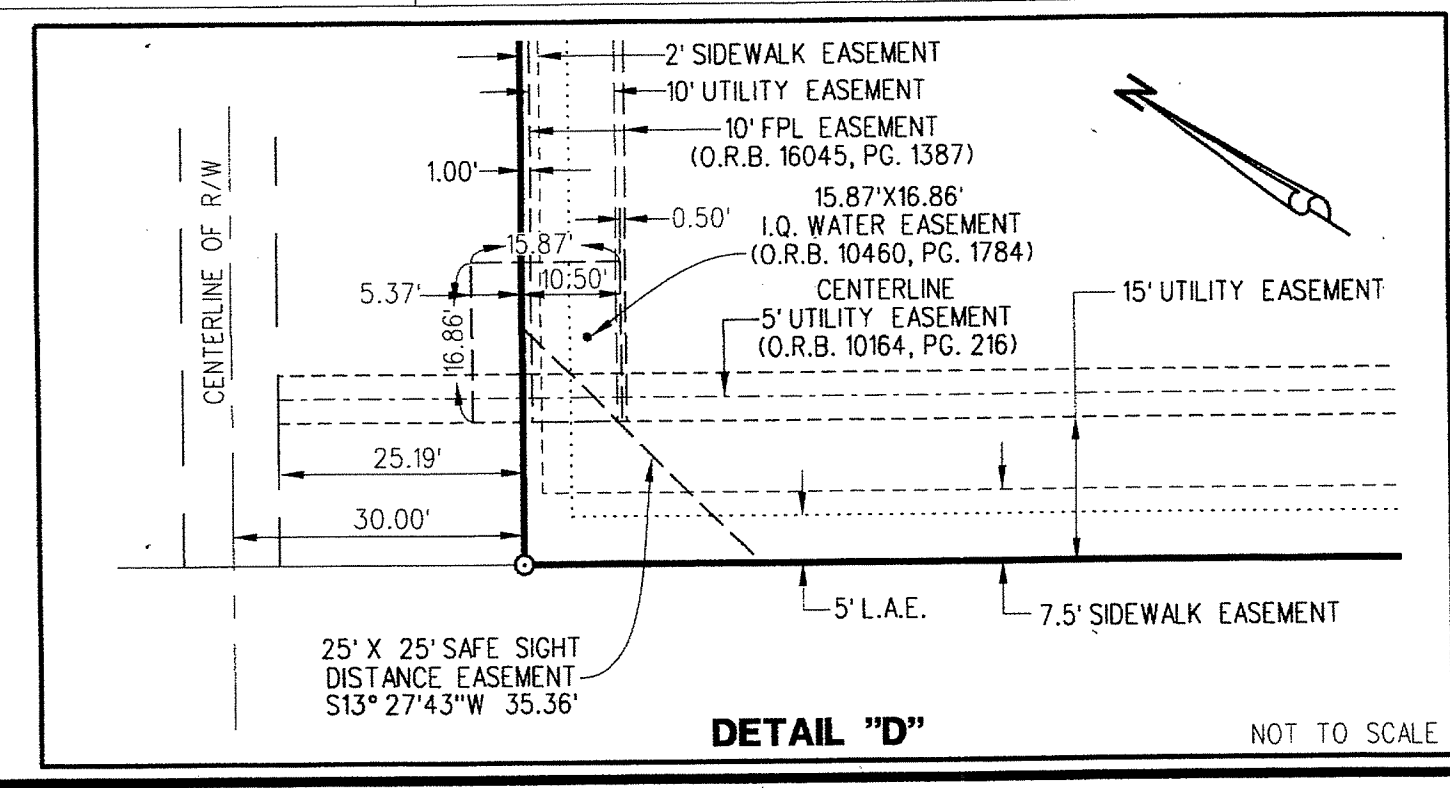
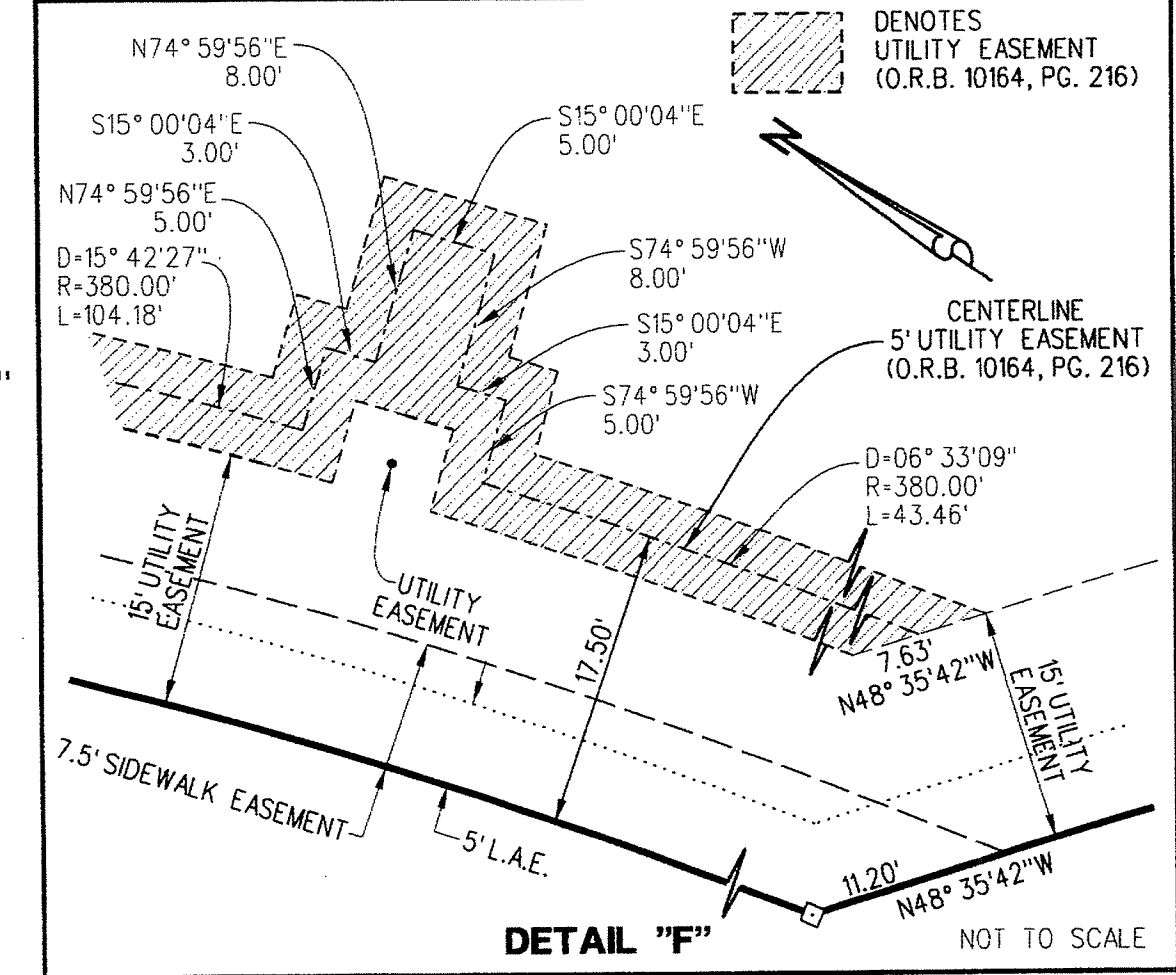
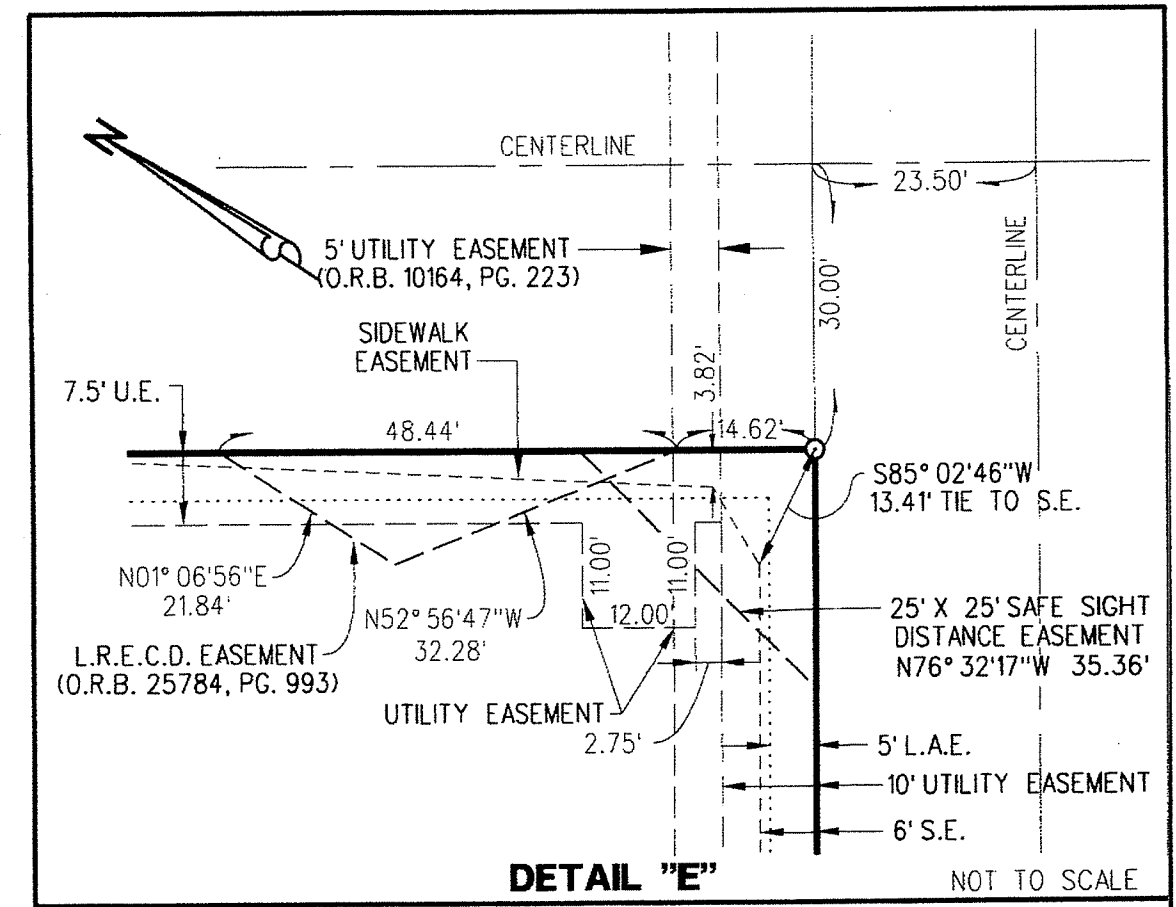
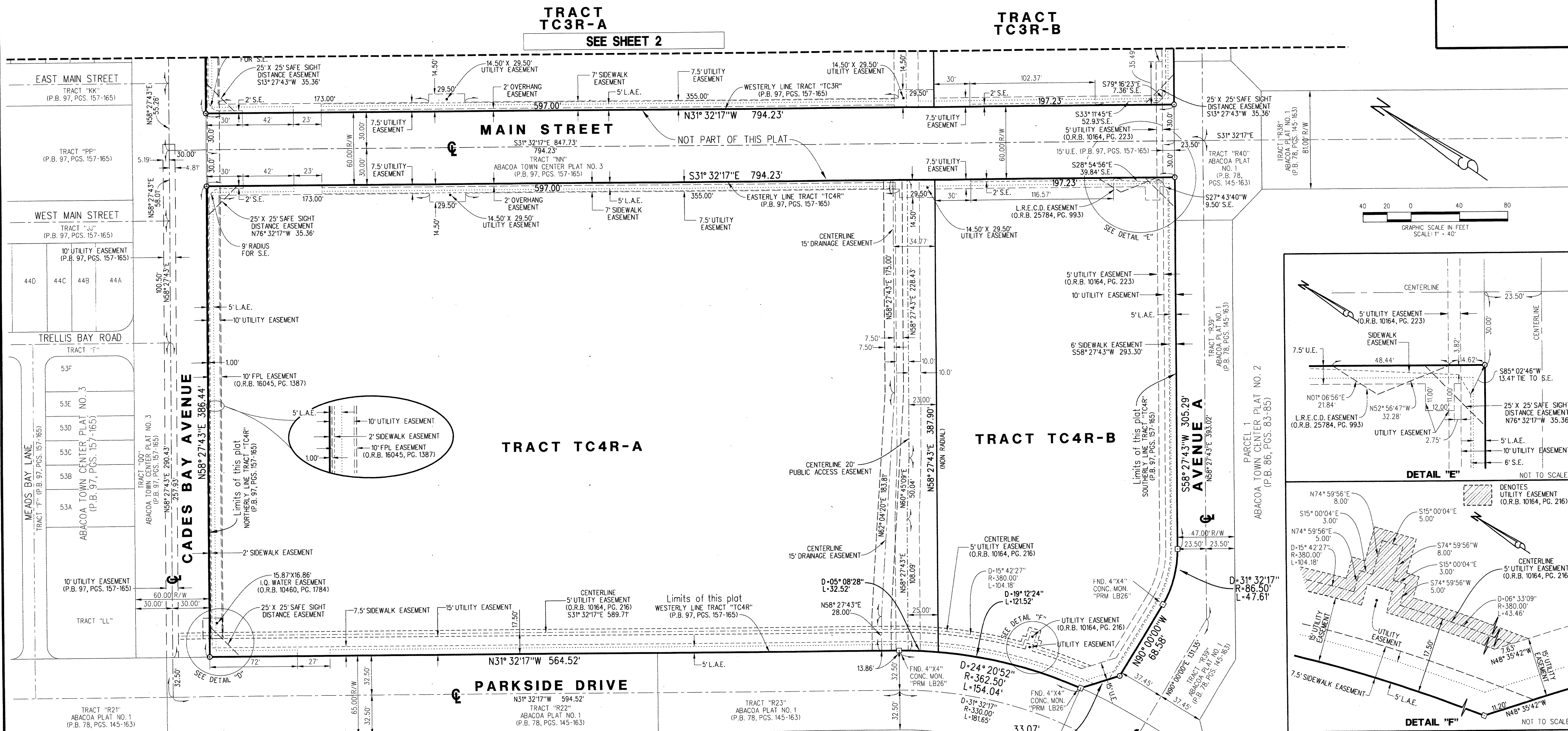
ABACOA TOWN CENTER PLAT NO. 4

BEING A REPLAT OF TRACTS TC3R AND TC4R OF ABACOA TOWN CENTER PLAT NO. 3,
AS RECORDED IN PLAT BOOK 97, PAGES 157 THROUGH 165, PUBLIC RECORDS OF PALM BEACH COUNTY, FLORIDA.
LYING IN SECTION 23, TOWNSHIP 41 SOUTH, RANGE 42 EAST, TOWN OF JUPITER, PALM BEACH COUNTY, FLORIDA

FEBRUARY 2013 SHEET 3 OF 3



148



ABBREVIATIONS:

CB	= CHORD BEARING
CL	= CHORD LENGTH
CONC.	= CONCRETE
D	= DELTA
D.E.	= DRAINAGE EASEMENT
F.P.L.	= FLORIDA POWER & LIGHT
I.O.	= IRRIGATION QUALITY
L	= ARC LENGTH
L.A.E.	= LIMITED ACCESS EASEMENT
L.R.E.C.D.	= LOXAHATCHEE RIVER ENVIRONMENTAL CONTROL DISTRICT
MON.	= MONUMENT
O.R.B.	= OFFICIAL RECORD BOOK
P.B.	= PLAT BOOK
PG.	= PAGE
P.R.M.	= PERMANENT REFERENCE MONUMENT
P.S.M.	= PROFESSIONAL SURVEYOR AND MAPPER
R	= RADIUS
S.E.	= SIDEWALK EASEMENT
U.E.	= UTILITY EASEMENT

LEGEND:

□	DENOTES PERMANENT REFERENCE MONUMENT (P.R.M.) SET 4"X4" CONCRETE MONUMENT WITH DISK STAMPED "PRM LB4431" UNLESS OTHERWISE NOTED
○	DENOTES PERMANENT REFERENCE MONUMENT (P.R.M.) SET MAG NAIL & DISK STAMPED "PRM LB4431" UNLESS OTHERWISE NOTED
⊕	DENOTES CENTERLINE OF RIGHT OF WAY

LIDBERG LAND SURVEYING, INC.
675 West Indiantown Road, Suite 200, Jupiter, Florida 33458 TEL. 561-746-8454

CAD.	K:\JUST \ 234142 \ 97-157 \ 12-072A-306 \ 12-072A-306.DGN
REF.	
FLD.	
OFF.	R.J.W.
CKD.	D.C.L.
JOB	12-072A-306
DATE	JANUARY 2, 2013
SHEET	3 OF 3
DWG.	D12-072PP