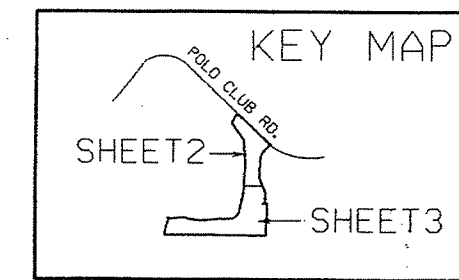
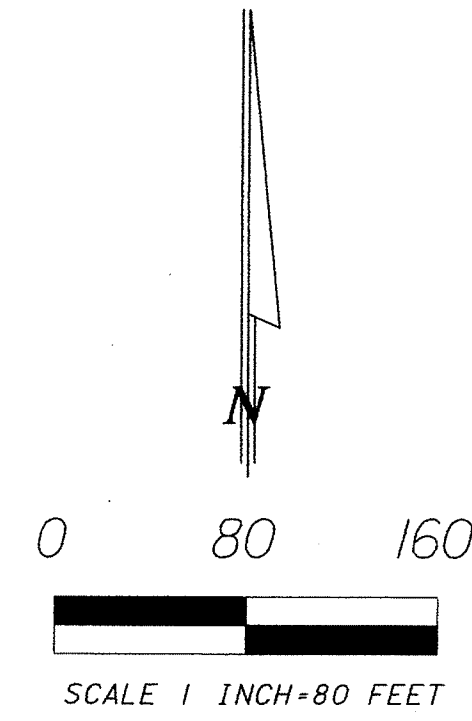


BLUE CYPRESS REPLAT AT PALM BEACH POLO AND COUNTRY CLUB

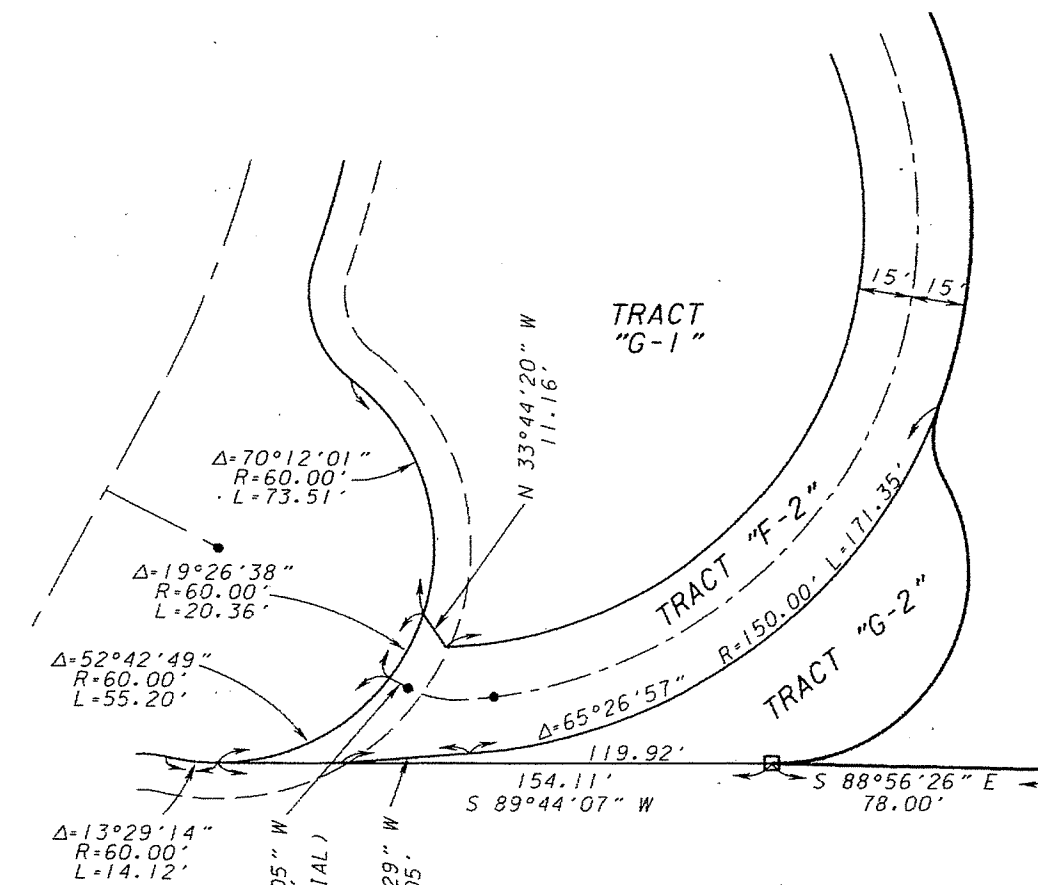
BEING A REPLAT OF A PORTION OF BLUE CYPRESS OF PALM BEACH POLO AND COUNTRY CLUB-WELLINGTON P.U.D., ACCORDING TO THE PLAT THEREOF AS RECORDED IN PLAT BOOK 90, PAGES 3 THROUGH 5, PUBLIC RECORDS OF PALM BEACH COUNTY, FLORIDA SECTION 15, TOWNSHIP 44 SOUTH, RANGE 41 EAST. VILLAGE OF WELLINGTON, PALM BEACH COUNTY, FLORIDA

MARCH, 2013
SHEET 3 OF 3



LEGEND & ABBREVIATIONS:

- R RADIUS LENGTH
- Δ DELTA ANGLE
- L ARC LENGTH
- ℄ CENTER LINE
- P.B. PLAT BOOK
- P. PAGE
- IR IRON ROD
- N/D NAIL & DISK
- ESMT. EASEMENT
- ORB OFFICIAL RECORD BOOK
- EXIST EXISTING
- FND. FOUND
- IR/C IRON ROD & CAP
- FPL FLORIDA POWER & LIGHT
- B.E. BUFFER EASEMENT
- U.E. UTILITY EASEMENT
- D.E. DRAINAGE EASEMENT
- P.O.B. POINT OF BEGINNING
- P.O.C. POINT OF COMMENCEMENT
- PCP PERMANENT CONTROL POINT
- PRM PERMANENT REFERENCE MONUMENT
- M.E. MAINTENANCE EASEMENT
- D.E. DRAINAGE EASEMENT
- L.A.E. LIMITED ACCESS EASEMENT
- L.M.A.E. LAKE MAINTENANCE ACCESS EASEMENT
- W.E. WATER EASEMENT
- S.E. SANITARY EASEMENT
- SET PRM LB# 6837
- FOUND PRM NO. 2297
- PERMANENT CONTROL POINT
- MONUMENT TO BE SET LB# 6837



DETAIL E
NOT TO SCALE

PALM BEACH POLO INC.
EXISTING GOLF COURSE
UNPLATTED

