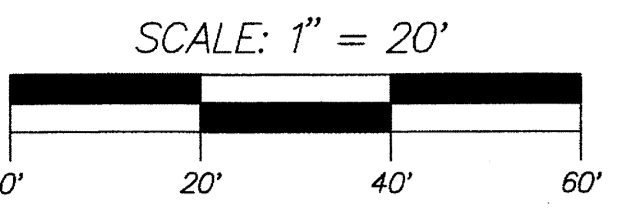


COUNTY OF PALM BEACH
STATE OF FLORIDA
THIS PLAT WAS FILED FOR RECORD AT _____
THIS _____ DAY OF _____
20____, AND DULY RECORDED IN PLAT BOOK NO. _____
ON PAGE _____
SHARON R. BOCK, CLERK OF CIRCUIT COURT
AND COMPTROLLER.
BY _____ D.C.

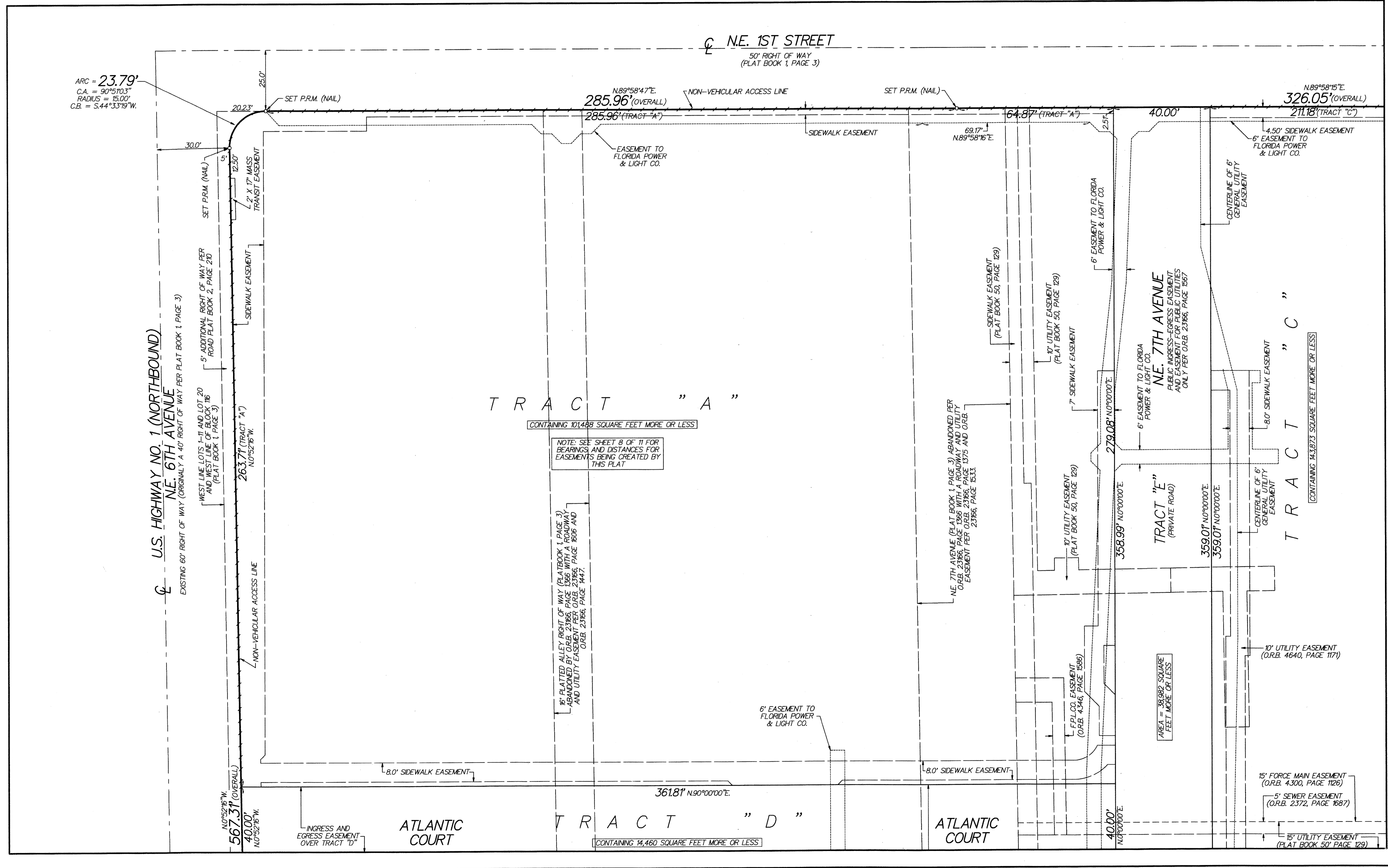
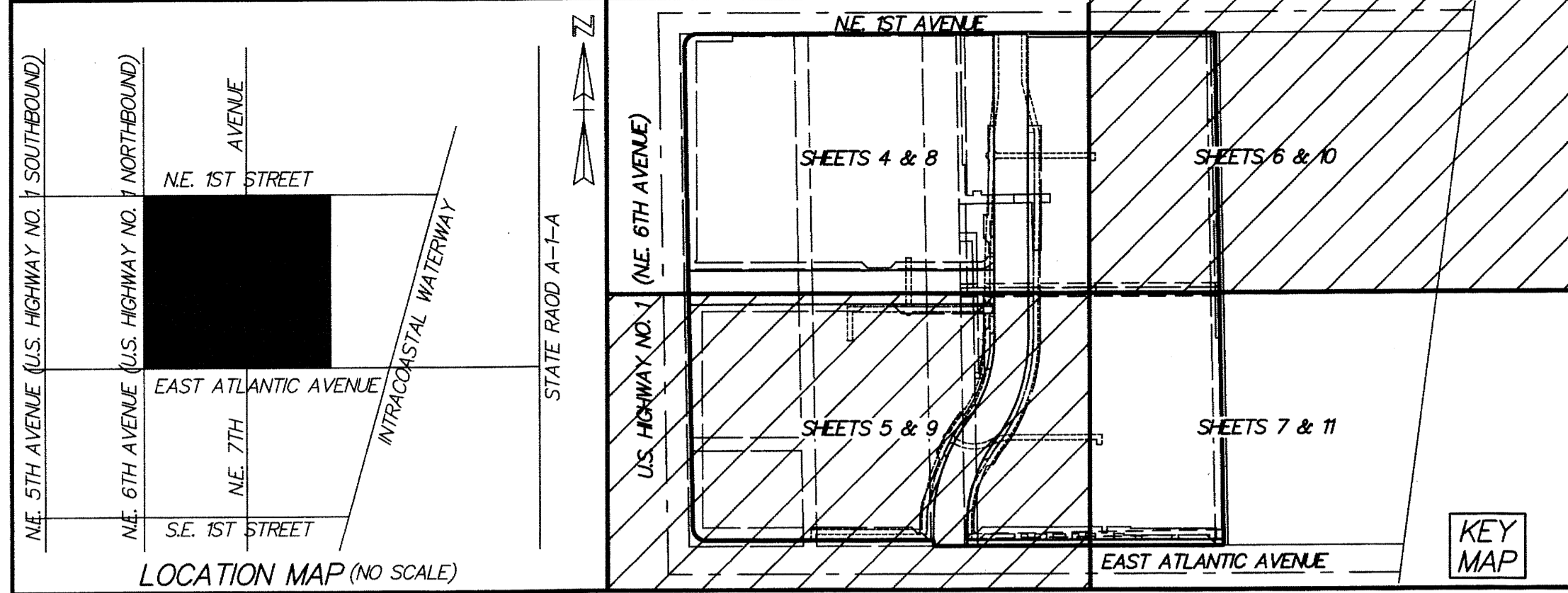
CDS DELRAY REDEVELOPMENT

BEING A REPLAT OF A PORTION OF BLOCK 116 AND A PORTION OF THE ROAD RIGHT OF WAY FOR N.E. 7TH AVENUE LYING EAST OF AND ADJACENT TO SAID BLOCK 116, TOWN OF LINTON (NOW DELRAY BEACH) (PLAT BOOK 1, PAGE 3, P.R.P.B.CO) AND ALL OF THE PLAT OF ATLANTIC PLAZA (PLAT BOOK , PAGE 129) (P.R.P.B.CO.), BEING IN SECTION 16, TOWNSHIP 46 SOUTH, RANGE 43 EAST, CITY OF DELRAY BEACH, PALM BEACH COUNTY, FLORIDA

MARCH 2011
SHEET 4 OF 11



LEGEND:
C = CENTERLINE
O.R.B. = OFFICIAL RECORD BOOK
F.P.L.CO. = FLORIDA POWER & LIGHT COMPANY
W.M.E. = WATER MAIN EASEMENT
P.R.M. = PERMANENT REFERENCE MONUMENT (4"x4" CONCRETE MONUMENT STAMPED "PRM LB353")



ARC = 23.79'
C.A. = 90°51'03"
RADIUS = 15.00'
C.B. = S.44°33'19"W.

NOTE: SEE SHEET 8 OF 11 FOR BEARINGS AND DISTANCES FOR EASEMENTS BEING CREATED BY THIS PLAT

6' PLATTED ALLEY RIGHT OF WAY (PLAT BOOK 1, PAGE 3) ABANDONED BY O.R.B. 2366, PAGE 1566 WITH A ROADWAY AND UTILITY EASEMENT PER O.R.B. 2366, PAGE 1566 AND O.R.B. 2366, PAGE 1533.

AREA = 38,982 SQUARE FEET MORE OR LESS

CONTAINING 14,373 SQUARE FEET MORE OR LESS

CONTAINING 14,460 SQUARE FEET MORE OR LESS