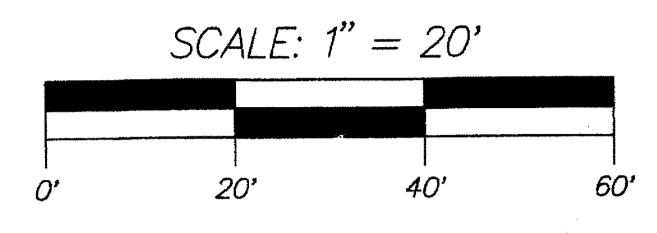


COUNTY OF PALM BEACH
STATE OF FLORIDA
THIS PLAT WAS FILED FOR RECORD AT _____
THIS _____ DAY OF _____
20____, AND DULY RECORDED IN PLAT BOOK NO. _____
ON PAGE _____
SHARON R. BOCK, CLERK OF CIRCUIT COURT
AND COMPTROLLER.
BY _____ D.C.

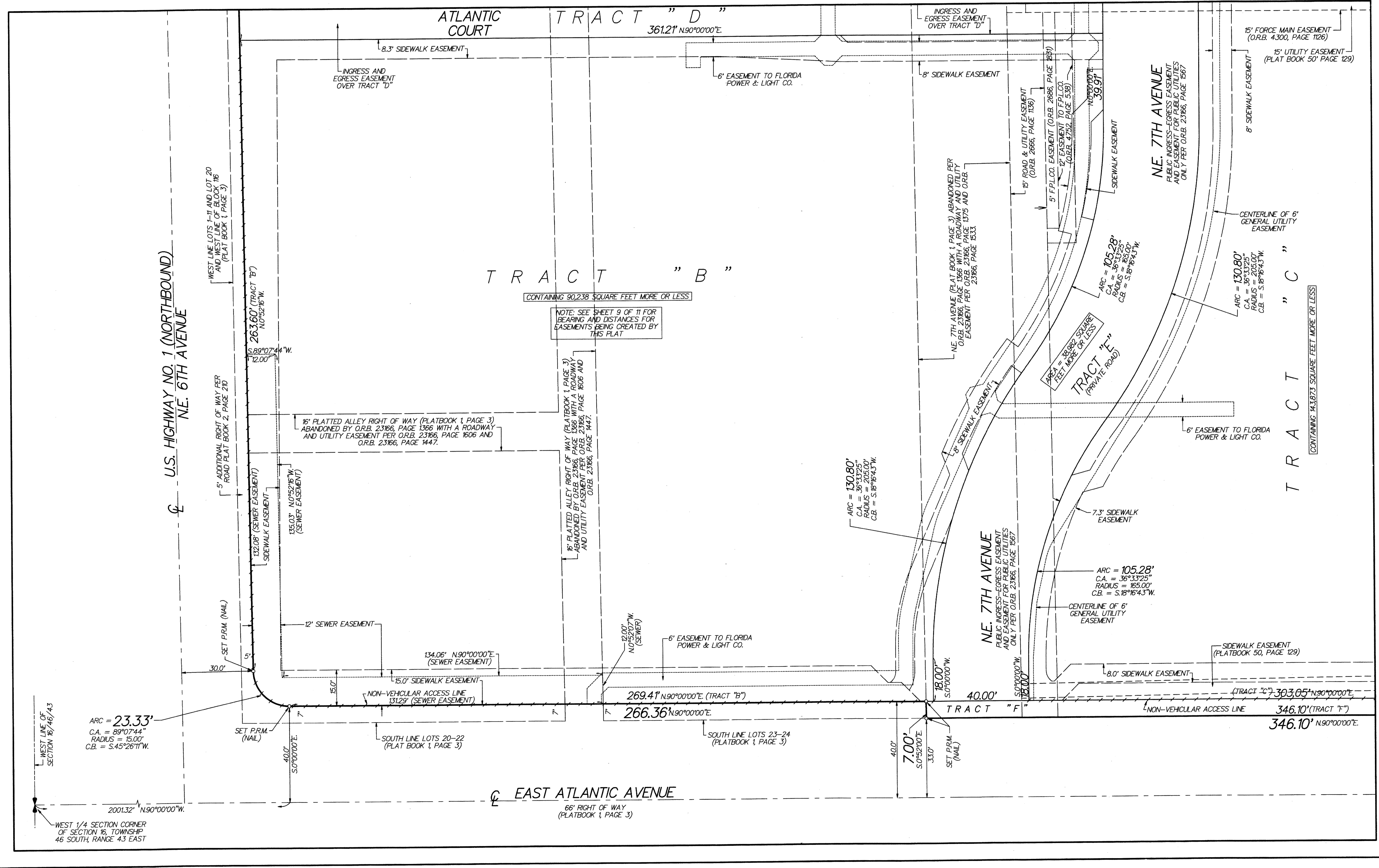
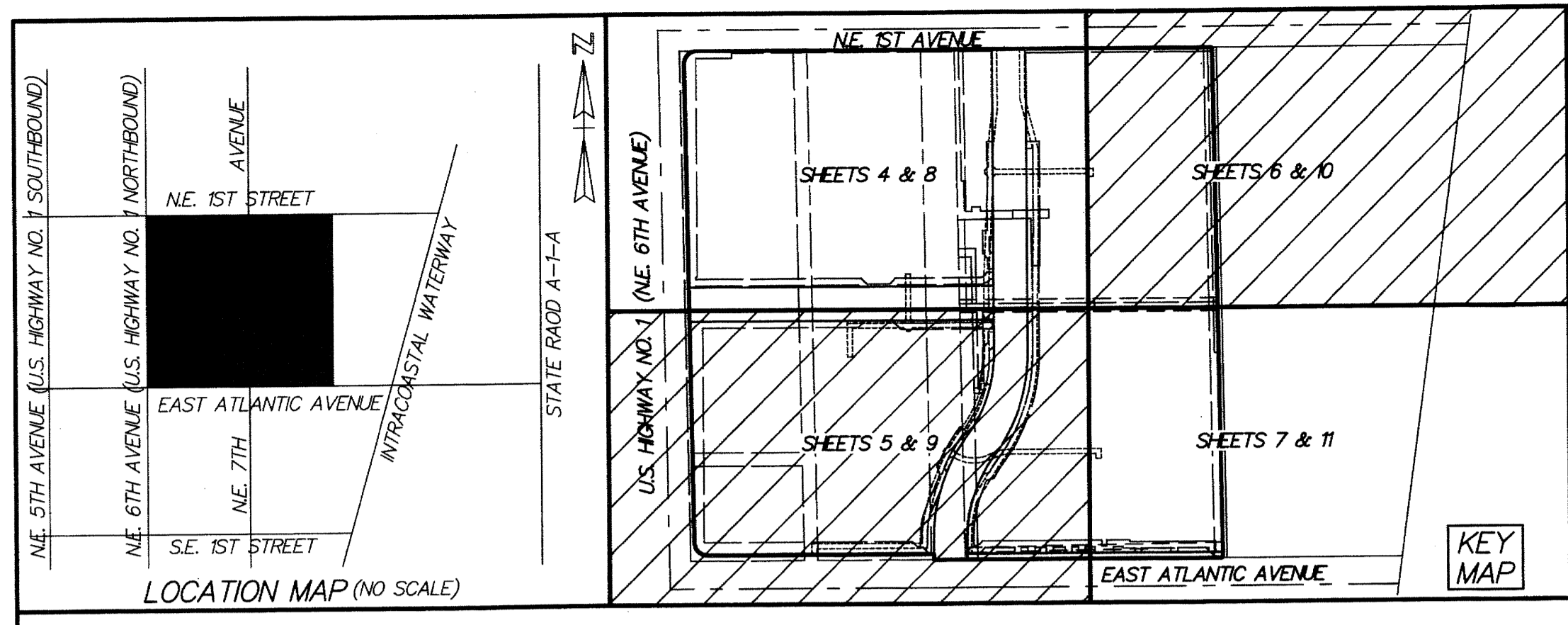


LEGEND:
C = CENTERLINE
O.R.B. = OFFICIAL RECORD BOOK
F.P.L.CO. = FLORIDA POWER & LIGHT COMPANY
W.M.E. = WATER MAIN EASEMENT
P.R.M. = PERMANENT REFERENCE MONUMENT
(4"x4" CONCRETE MONUMENT STAMPED
FORM LB3537)

CDS DELRAY REDEVELOPMENT

BEING A REPLAT OF A PORTION OF BLOCK 116 AND A PORTION OF THE ROAD RIGHT OF WAY FOR N.E. 7TH AVENUE LYING EAST OF AND ADJACENT TO SAID BLOCK 116, TOWN OF LINTON (NOW DELRAY BEACH) (PLAT BOOK 1, PAGE 3, P.R.P.B.CO) AND ALL OF THE PLAT OF ATLANTIC PLAZA (PLAT BOOK 50, PAGE 129) (P.R.P.B.CO.), BEING IN SECTION 16, TOWNSHIP 46 SOUTH, RANGE 43 EAST, CITY OF DELRAY BEACH, PALM BEACH COUNTY, FLORIDA

MARCH 2011
SHEET 5 OF 11



ARC = 23.33'
C.A. = 89°07'44"
RADIUS = 15.00'
C.B. = S.45°26'11"W.

WEST 1/4 SECTION CORNER OF SECTION 16, TOWNSHIP 46 SOUTH, RANGE 43 EAST

EAST ATLANTIC AVENUE
66' RIGHT OF WAY (PLATBOOK 1, PAGE 3)

NE. 7TH AVENUE
PUBLIC INGRESS-EGRESS EASEMENT AND EASEMENT FOR PUBLIC UTILITIES ONLY PER O.R.B. 23166, PAGE 1567

NE. 7TH AVENUE
PUBLIC INGRESS-EGRESS EASEMENT AND EASEMENT FOR PUBLIC UTILITIES ONLY PER O.R.B. 23166, PAGE 1567

NOTE: SEE SHEET 9 OF 11 FOR BEARING AND DISTANCES FOR EASEMENTS BEING CREATED BY THIS PLAT

CONTAINING 90,238 SQUARE FEET MORE OR LESS

CONTAINING 143,873 SQUARE FEET MORE OR LESS

WEST LINE LOTS 1-11 AND LOT 20 AND WEST LINE OF BLOCK 116 (PLAT BOOK 1, PAGE 3)

WEST LINE LOTS 1-11 AND LOT 20 AND WEST LINE OF BLOCK 116 (PLAT BOOK 1, PAGE 3)

WEST LINE LOTS 1-11 AND LOT 20 AND WEST LINE OF BLOCK 116 (PLAT BOOK 1, PAGE 3)

WEST LINE LOTS 1-11 AND LOT 20 AND WEST LINE OF BLOCK 116 (PLAT BOOK 1, PAGE 3)

WEST LINE LOTS 1-11 AND LOT 20 AND WEST LINE OF BLOCK 116 (PLAT BOOK 1, PAGE 3)

WEST LINE LOTS 1-11 AND LOT 20 AND WEST LINE OF BLOCK 116 (PLAT BOOK 1, PAGE 3)

NOTE: SEE SHEET 9 OF 11 FOR BEARING AND DISTANCES FOR EASEMENTS BEING CREATED BY THIS PLAT

NOTE: SEE SHEET 9 OF 11 FOR BEARING AND DISTANCES FOR EASEMENTS BEING CREATED BY THIS PLAT

NOTE: SEE SHEET 9 OF 11 FOR BEARING AND DISTANCES FOR EASEMENTS BEING CREATED BY THIS PLAT

NOTE: SEE SHEET 9 OF 11 FOR BEARING AND DISTANCES FOR EASEMENTS BEING CREATED BY THIS PLAT

NOTE: SEE SHEET 9 OF 11 FOR BEARING AND DISTANCES FOR EASEMENTS BEING CREATED BY THIS PLAT