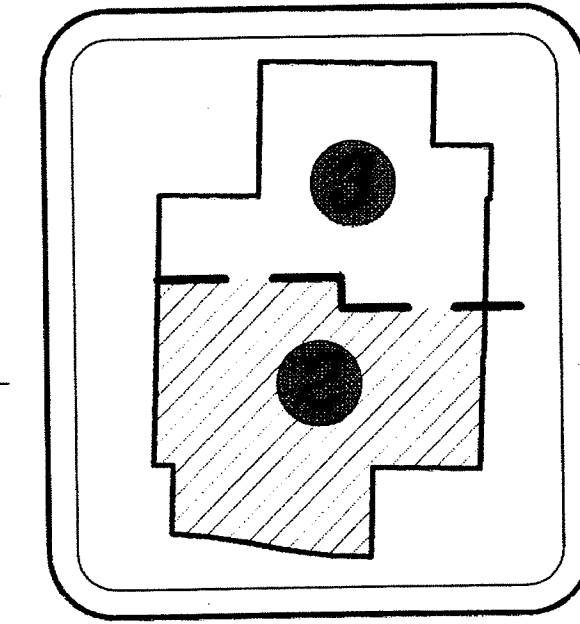


OXBRIDGE ACADEMY OF THE PALM BEACHES

BEING A REPLAT OF JEWISH COMMUNITY CAMPUS, PLAT BOOK 68, PAGES 75 THROUGH 77, INCLUSIVE, AND MEYER JEWISH ACADEMY, PLAT BOOK 98, PAGES 58 THROUGH 59, INCLUSIVE, BOTH OF THE PUBLIC RECORDS OF PALM BEACH COUNTY, FLORIDA, SAID LANDS LYING AND SITUATE IN SECTION 13, TOWNSHIP 43 SOUTH, RANGE 42 EAST, PALM BEACH COUNTY, FLORIDA.



KEY MAP (NOT TO SCALE)

STATE OF FLORIDA
COUNTY OF PALM BEACH } SS

THIS PLAT WAS FILED FOR RECORD AT _____ M.

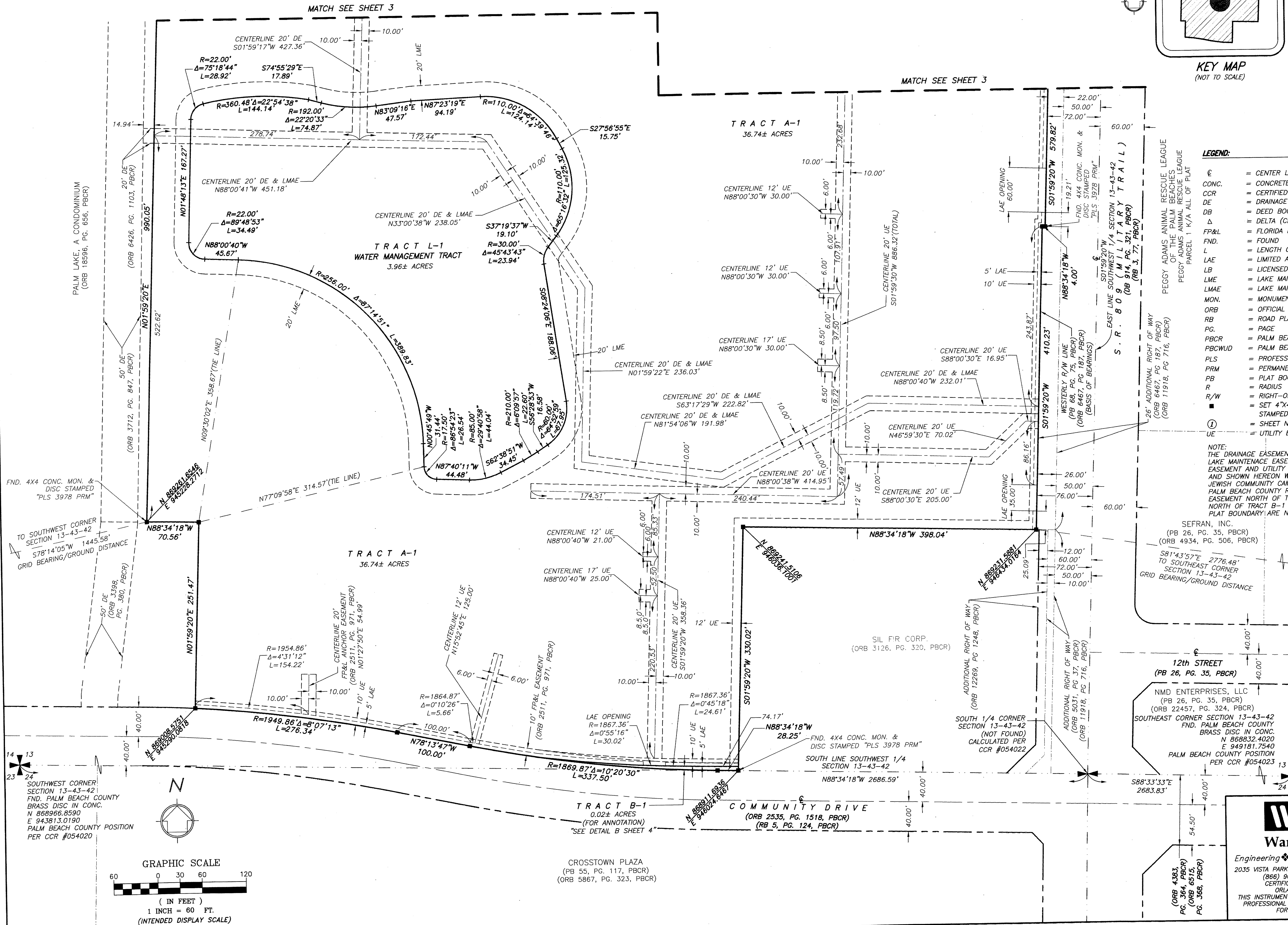
THIS _____ DAY OF _____ A.D. 2013 AND DULY RECORDED

IN PLAT BOOK _____ THROUGH _____ ON PG.(S) _____ THROUGH _____

SHARON R. BOCK
CLERK AND COMPTROLLER

BY: _____
DEPUTY CLERK

SHEET 2 OF 4 SHEETS



LEGEND:

- CL = CENTER LINE
- CONC. = CONCRETE
- CCR = CERTIFIED CORNER RECORD
- DE = DRAINAGE EASEMENT
- DB = DEED BOOK
- Δ = DELTA (CENTRAL ANGLE)
- FLP = FLORIDA POWER & LIGHT
- FND. = FOUND
- L = LENGTH OF ARC
- LAE = LIMITED ACCESS EASEMENT
- LB = LICENSED SURVEYING BUSINESS
- LME = LAKE MAINTENANCE EASEMENT
- LMAE = LAKE MAINTENANCE ACCESS EASEMENT
- MON. = MONUMENT
- ORB = OFFICIAL RECORDS BOOK
- RB = ROAD PLAT BOOK
- PG. = PAGE
- PBCR = PALM BEACH COUNTY RECORDS
- PBCWUD = PALM BEACH COUNTY WATER UTILITY DEPARTMENT
- PLS = PROFESSIONAL LAND SURVEYOR
- PRM = PERMANENT REFERENCE MONUMENT
- PB = PLAT BOOK
- R = RADIUS
- R/W = RIGHT-OF-WAY
- = SET 4"x4" CONC. PRM & ALUMINUM DISC STAMPED "LB 7055" EXCEPT AS NOTED.
- ① = SHEET NUMBER
- UE = UTILITY EASEMENT

NOTE: THE DRAINAGE EASEMENTS, LIMITED ACCESS EASEMENTS, LAKE MAINTENANCE EASEMENT, LAKE MAINTENANCE ACCESS EASEMENT AND UTILITY EASEMENTS BEING REPLATTED AND SHOWN HEREON WERE PREVIOUSLY CREATED BY JEWISH COMMUNITY CAMPUS, PLAT BOOK 68, PAGE 75, PALM BEACH COUNTY RECORDS. THE LIMITED ACCESS EASEMENT NORTH OF TRACT B-1 AND UTILITY EASEMENT NORTH OF TRACT B-1 EXTENDING ALONG THE SOUTH PLAT BOUNDARY ARE NEW.

SEFRAN, INC.
(PB 26, PG. 35, PBCR)
(ORB 4934, PG. 506, PBCR)
581'43.57"E 2776.48'
TO SOUTHWEST CORNER
SECTION 13-43-42
GRID BEARING/GROUND DISTANCE

12th STREET
(PB 26, PG. 35, PBCR)
NMD ENTERPRISES, LLC
(PB 26, PG. 35, PBCR)
(ORB 22457, PG. 324, PBCR)
SOUTHWEST CORNER SECTION 13-43-42
FND. PALM BEACH COUNTY
BRASS DISC IN CONC.
N 868632.4020
E 949181.7540
PALM BEACH COUNTY POSITION
PER CCR #054023

WGI
Wantman Group, Inc.

Engineering ♦ Planning ♦ Surveying ♦ Environmental

2035 VISTA PARKWAY, SUITE 100, WEST PALM BEACH, FL 33411
(866) 909-2220 phone (561) 687-1110 fax
CERTIFICATE OF AUTHORIZATION No. LB 7055
ORLANDO - PORT ST. LUCIE - TAMPA

THIS INSTRUMENT WAS PREPARED BY DEREK G. ZEMAN, P.S.M.
PROFESSIONAL SURVEYOR AND MAPPER, LICENSE NO. 5655
FOR THE FIRM: WANTMAN GROUP, INC.