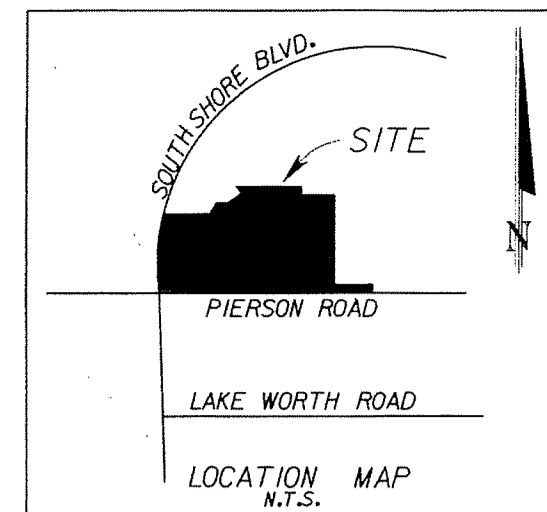


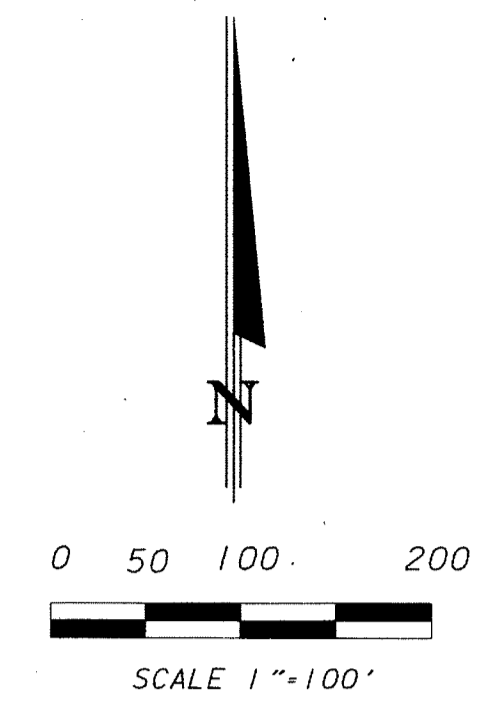
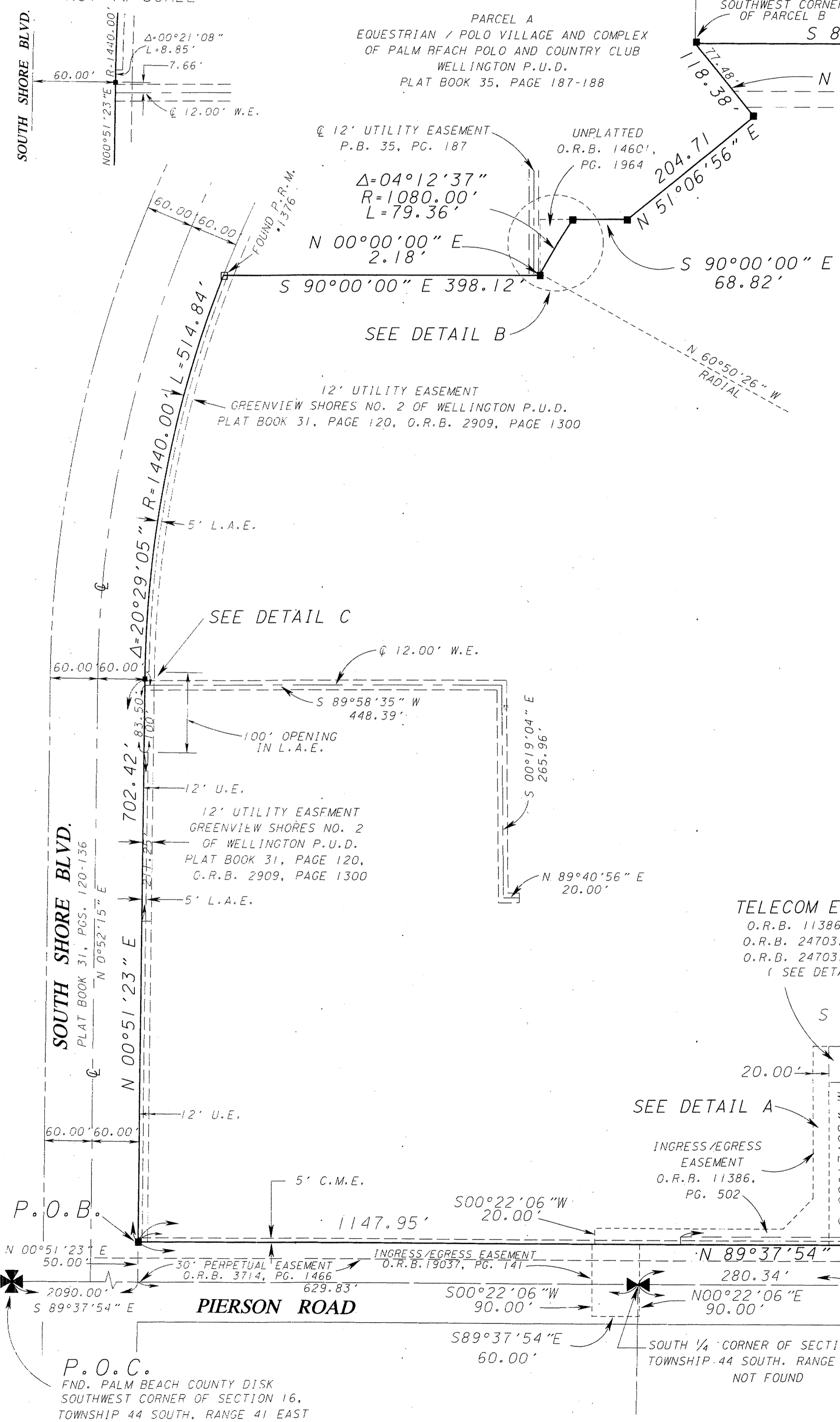
EQUESTRIAN VILLAGE

IN PART OF SECTION 16, TOWNSHIP 44 SOUTH, RANGE 41 EAST
VILLAGE OF WELLINGTON, PALM BEACH COUNTY, FLORIDA
IN 3 SHEETS, SHEET NO. 3
JULY 2013



EQUESTRIAN / POLO VILLAGE AND COMPLEX
OF PALM BEACH POLO AND COUNTRY CLUB WELLINGTON P.U.D.
(PLAT BOOK 35, PAGE 187-188)

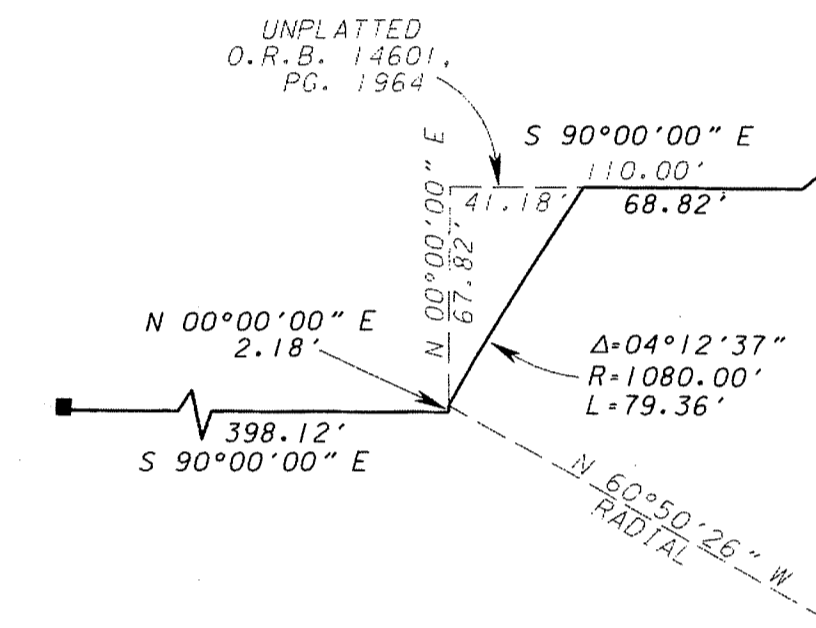
DETAIL C
NOT TO SCALE



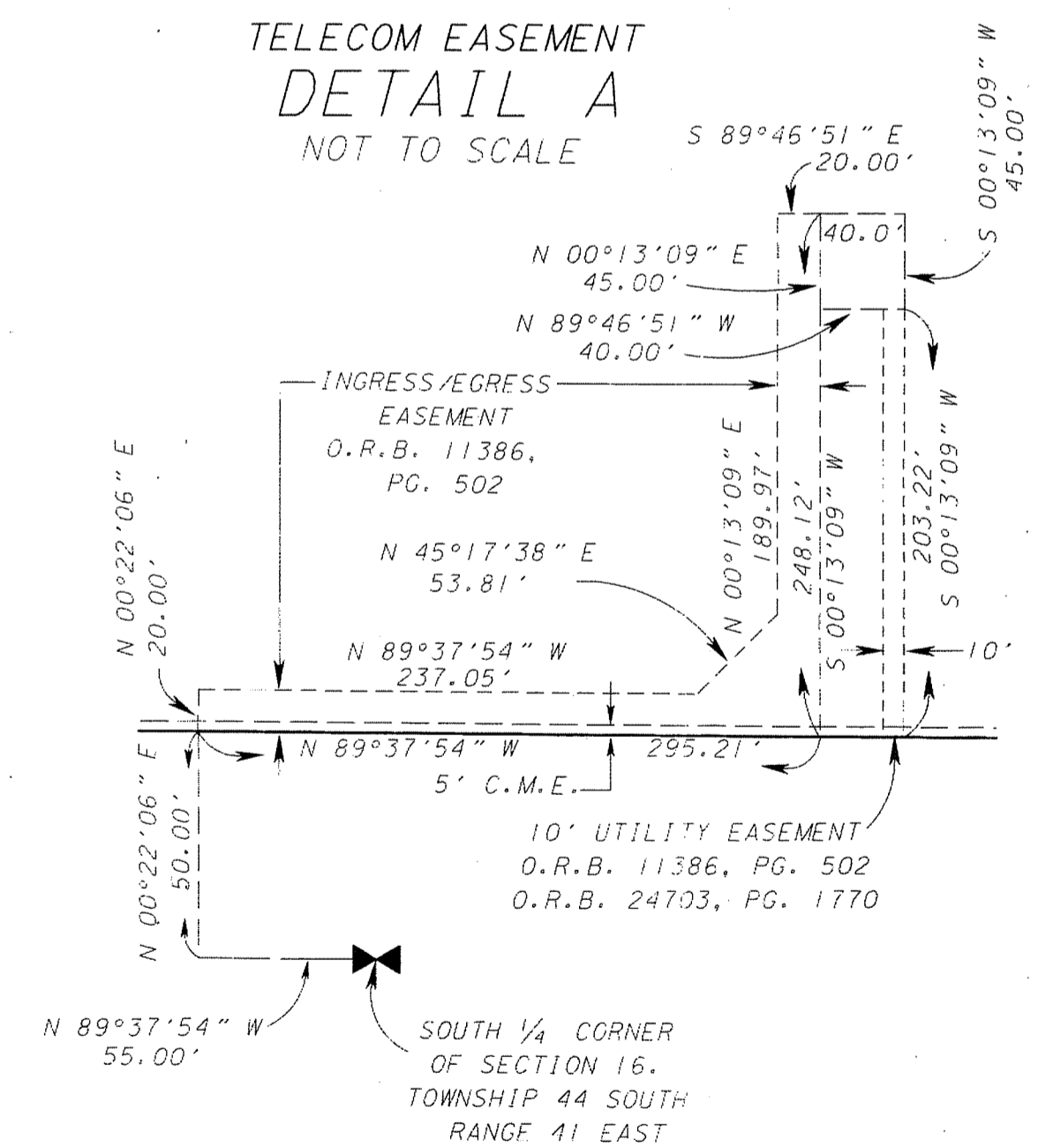
LEGEND:

- -SET PERMANENT REFERENCE MONUMENT, LB-6837
- -PERMANENT CONTROL POINT
- B.E. -BUFFER EASEMENT
- ⊕ -CENTERLINE
- C.H. -CHORD
- C.B. -CHORD BEARING
- D.B. -DEED BOOK
- D.E. -DRAINAGE EASEMENT
- L -ARC LENGTH
- L.A.E. -LIMITED ACCESS EASEMENT
- L.M.E. -LAKE MAINTENANCE EASEMENT
- C.M.E. -CANAL MAINTENANCE EASEMENT
- N.R. -NOT RADIAL
- R -RADIUS
- N.T.S. -NOT TO SCALE
- O.R.B. -OFFICIAL RECORD BOOK
- P.O.B. -POINT OF BEGINNING
- P.B. -PLAT BOOK
- PGS -PAGES
- P.S.M. -PROFESSIONAL SURVEYOR AND MAPPER
- R/W -RIGHT OF WAY
- U.E. -UTILITY EASEMENT
- SFWD -SOUTH FLORIDA WATER MANAGEMENT DISTRICT
- W.E. -WATER EASEMENT
- FND. -FOUND

DETAIL B
NOT TO SCALE



TELECOM EASEMENT
DETAIL A
NOT TO SCALE



NOTICE: THIS PLAT AS RECORDED IN ITS GRAPHIC FORM, IS THE OFFICIAL DEPICTION OF THE SUBDIVIDED LANDS DESCRIBED HEREIN AND WILL IN NO CIRCUMSTANCES BE SUPPLANTED IN AUTHORITY BY ANY OTHER GRAPHIC OR DIGITAL FORM OF THE PLAT. THERE MAY BE ADDITIONAL RESTRICTIONS THAT ARE NOT RECORDED ON THIS PLAT THAT MAY BE FOUND IN THE PUBLIC RECORDS OF THIS COUNTY.